

# Ball Valves, Universal Light Series

Using the Universal Series technology, the Parker Legris light series valves offer the advantages of **compactness**, **ease of operation** and **long-term reliability**.

## Product Advantages

<b>Easy-to-Use</b>	Ease of operation due to the low friction design The short levers may be repositioned and exchanged Extremely compact Wide range of configurations
<b>Maximum Efficiency</b>	Excellent performance under vacuum Full flow Chemical nickel-plated brass with high phosphorous content for outstanding corrosion resistance Automatic seal wear compensation system
<b>Reliability</b>	Tried-and-tested technology Forged brass provides mechanical strength and long service life 100% leak-tested in production Date coding to guarantee quality and traceability



**Applications**

- Vacuum
- Transportation
- Packaging
- Textile
- Pneumatics
- Sawmills
- Rubber & Plastics

## Technical Characteristics

<b>Compatible Fluids</b>	Compressed air Other fluids: see compatibility chart at the end of this chapter
<b>Working Pressure</b>	Vacuum to 12 bar
<b>Working Temperature</b>	-20°C to +80°C

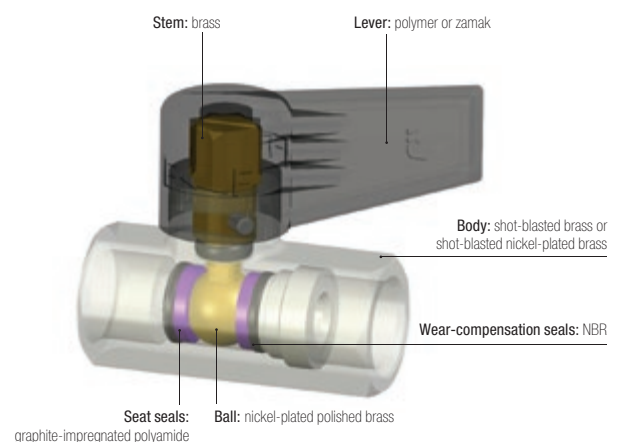
<b>Tightening Torques</b>	Threads	G1/8	G1/4	G3/8	G1/2	G3/4
	daN.m	0.10 to 0.20	0.10 to 0.20	0.15 to 0.25	0.20 to 0.35	0.50 to 0.70

Reliable performance is dependent upon the type of fluid conveyed, component materials and tubing being used.  
Guaranteed for use with a vacuum of 755 mm Hg (99% vacuum).

### Regulations

- DI: 97/23/EC (module PED A - diameters greater than 25 mm)
- DI: 2006/42/EC (Machinery Directive)
- DI: 2002/95/EC (RoHS)
- RG: 1907/2006 (REACH)

### Component Materials



### Silicone-free

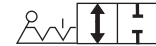
**ARA**<sup>®</sup>  
PNEUMATIK  
ul. Wyścigowa 38, 53-012 Wrocław  
tel. 71 364 72 82, ara@arapneumatik.pl  
[www.arapneumatik.pl](http://www.arapneumatik.pl)



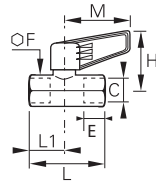
# Universal Light Series

## 0492

### 2/2 In-Line Ball Valve, Female BSPP Thread



Nickel-plated brass, NBR



DN	C		E	F	H	L	L1	M	Kg
4	G1/4	<a href="#">0492 04 13</a>	9	17	34	39.5	17	35	0.073
7	G3/8	<a href="#">0492 07 17</a>	11	22	38	45	20	43	0.128
10	G1/2	<a href="#">0492 10 21</a>	12	24	44	54	25	50	0.162
13	G3/4	<a href="#">0492 13 27</a>	14	30	46	62	28	50	0.240

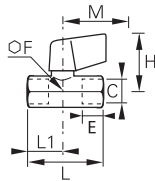
Technical polymer handle

## 0492..64

### 2/2 In-Line Ball Valve, Short Handle, Female BSPP Thread



Nickel-plated brass, NBR

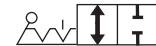


DN	C		E	F	H	L	L1	M	Kg
4	G1/4	<a href="#">0492 04 13 64</a>	9	17	36	39.5	17	25	0.090

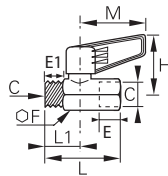
\*Short handle in zamac

## 0491

### 2/2 In-Line Ball Valve, Male/Female BSPP Thread



Nickel-plated brass, NBR



DN	C		E	E1	F	H	L	L1	M	Kg
4	G1/4	<a href="#">0491 04 13</a>	9	7	17	34	39.5	17	35	0.070
7	G3/8	<a href="#">0491 07 17</a>	11	8	22	38	45	20	43	0.124
10	G1/2	<a href="#">0491 10 21</a>	12	10	24	44	53	24	50	0.160
13	G3/4	<a href="#">0491 13 27</a>	14	12	30	46	59	25	50	0.238

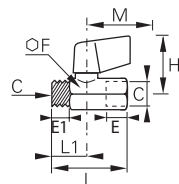
Technical polymer handle

## 0491..64

### 2/2 In-Line Ball Valve, Short Handle, Male/Female BSPP Thread



Nickel-plated brass, NBR



DN	C		E	E1	F	H	L	L1	M	Kg
4	G1/4	<a href="#">0491 04 13 64</a>	9	7	17	36	39.5	17	25	0.092

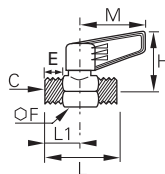
\*Short handle in zamac

## 0490

### 2/2 In-Line Ball Valve, Male BSPP Thread



Nickel-plated brass, NBR

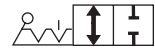


DN	C		E	F	H	L	L1	M	Kg
4	G1/4	<a href="#">0490 04 13</a>	7	17	34	39	17	35	0.070
7	G3/8	<a href="#">0490 07 17</a>	8	22	38	44	20	43	0.109
10	G1/2	<a href="#">0490 10 21</a>	10	24	44	53	24	50	0.160
13	G3/4	<a href="#">0490 13 27</a>	12	30	46	59	25	50	0.233

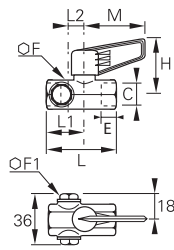
Technical polymer handle

# Universal Light Series

## 0494 2/2 In-Line Ball Valve, 2 Vent Plugs, Female BSPP Thread



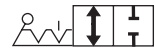
Nickel-plated brass, NBR



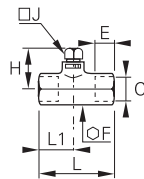
DN	C		E	F	F1	H	L	L1	L2	M	Kg
7	G3/8	<a href="#">0494 07 17</a>	11	22	16	38	60	20	15	43	0.178

Technical polymer handle

## 0497 2/2 Ball Valve, Square Stem, Female BSPP Thread

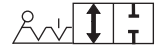


Brass, NBR

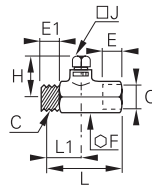


DN	C		E	F	H	J	L	L1	Kg
4	G1/4	<a href="#">0497 04 13</a>	9	17	25	7	39	17	0.063
7	G3/8	<a href="#">0497 07 17</a>	11	22	26	7	45	20	0.122
10	G1/2	<a href="#">0497 10 21</a>	12	24	29	10	54	25	0.141
13	G3/4	<a href="#">0497 13 27</a>	14	30	30	10	62	28	0.230

## 0496 2/2 Ball Valve, Square Stem, Male/Female BSPP Thread



Brass, NBR



DN	C		E	E1	F	H	J	L	L1	Kg
4	G1/4	<a href="#">0496 04 13</a>	7	9	17	25	7	39	17	0.065
7	G3/8	<a href="#">0496 07 17</a>	8	11	22	26	7	45	20	0.118
10	G1/2	<a href="#">0496 10 21</a>	10	12	24	29	10	53	24	0.150
13	G3/4	<a href="#">0496 13 27</a>	12	14	30	30	10	59	28	0.222

**ARA**<sup>®</sup>  
PNEUMATIK

ul. Wyścigowa 38, 53-012 Wrocław  
tel. 71 364 72 82, ara@arapneumatik.pl  
[www.arapneumatik.pl](http://www.arapneumatik.pl)

