

Manually-Operated Valves

Manually-operated valves offer a **reliable** and **durable** system for opening and closing the circuit when the system has to be **switched frequently**. They provide a significant reduction in the time needed to work on pneumatic circuits.

Product Advantages

Manual Switch-Operated Valves

- Downstream control supply provided by simply moving the lever
- 2 models available to provide the best solution for the system:
 - 3/2: opening, closing, venting
 - 2/2: opening, closing
- Compact and ergonomic (can be positioned through 360°)
- Push-in connections

Valves with Sliding Sleeve

- Uni-directional use ensures the downstream circuit is vented
- Operated in the plane of the tube
- Lightweight due to the use of aluminium
- Ideal for complex installations in a restricted space
- Immediate identification of the venting system by the colour (red)



Robotics
Conveyors
Textile
Process Engineering
Printing
Pneumatics
Packaging

Applications

Technical Characteristics

Compatible Fluids	Compressed air
Working Pressure	0 to 10 bar Model 0669: 0 to 16 bar
Working Temperature	-10°C to +80°C Model 0669: -5°C to +70°C

Component Materials

Seals: NBR

Bolt:

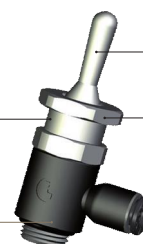
Manual switch-operated valve: nickel-plated brass with seal
Sleeve valve: nickel-plated brass

Body:

Manual switch-operated valve: technical polymer
Sleeve valve: nickel-plated brass

Lever:
nickel-plated brass

Locking nut:
nickel-plated brass



Silicone-free

Regulations

DI: 2002/95/EC (RoHS)
RG: 1907/2006 (REACH)
DI: 97/23/EC (PED)

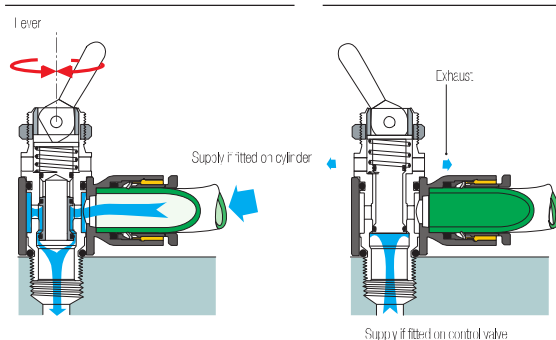
Operation

Switch-Operated Valves

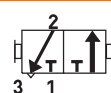


Open

Closed

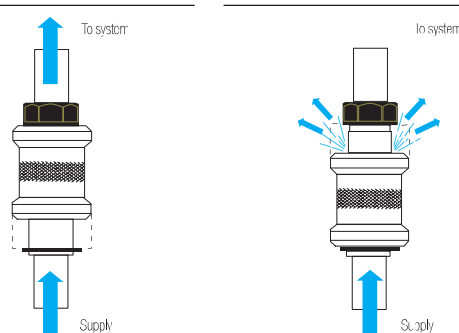


Sleeve Valves



Open: downstream supply

Closed: downstream exhaust



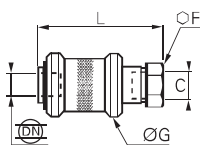
Manually-Operated Valves

0669

3/2 Sleeve Valve, Female BSPP and Metric Thread



Nickel-plated brass, aluminium, NBR



C	DN	F	G	L	kg
M5x0.8	2.5	10	14	30.5	0.012
G1/8	4	14	25	48	0.050
G1/4	7	19	30	58	0.096
G3/8	10	22	35	68	0.154
G1/2	14	27	40	75	0.210
G3/4	19	32	50	83	0.324

ARA

PNEUMATIK

53-012 Wrocław tel. 71 364 72 80
ul. Wyścigowa 38 fax 71 364 72 83

www.arapneumatik.pl

