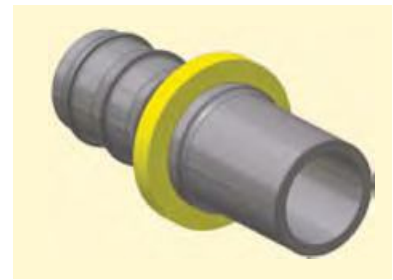
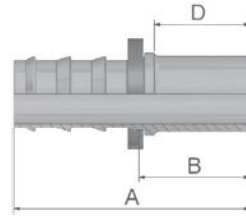




1D Metric Standpipe Light Series – Rigid Straight

ISO 8434-1 – BEL



XXXXX-XX-XX Part Number 	 Hose I.D.				Tube O.D. mm	A mm	B mm	D mm
	DN	Inch	Size	mm				
31D82-6-4	6	1/4	-4	6.3	6	44	25	22
31D82-6-4B	6	1/4	-4	6.3	6	44	25	22
31D82-8-4	6	1/4	-4	6.3	8	44	25	22
31D82-8-4B	6	1/4	-4	6.3	8	44	25	22
31D82-10-6	10	3/8	-6	9.5	10	49	26	23
31D82-10-6B	10	3/8	-6	9.5	10	49	26	23
31D82-12-6	10	3/8	-6	9.5	12	49	27	23
31D82-12-6B	10	3/8	-6	9.5	12	49	27	23
31D82-15-8	12	1/2	-8	12.7	15	55	29	25
31D82-15-8B	12	1/2	-8	12.7	15	55	29	25
31D82-18-10	16	5/8	-10	15.9	18	67	30	26
31D82-18-10B	16	5/8	-10	15.9	18	67	30	26
31D82-22-12	20	3/4	-12	19.1	22	69	32	28
31D82-22-12B	20	3/4	-12	19.1	22	69	32	28

Attention: For assembly of EO-2-functional nut or nut and progressive ring use the EO-pre-assembly body.

Parker Dystrybutor:

ARA[®]
PNEUMATIK
53-012 Wrocław ul. Wyścigowa 38
www.arapneumatik.pl



Also available in stainless steel. Details can be found in CAT 4400.1/UK

Approved **fitting series** for hose types:

B: Brass; K: Without plastic ring; SM: Metric Hexagon

82 801 804 821FR 830M 831 836 837BM 837PU 838M