

# LF 3000® Push-In Fittings / Stud Fittings

## Technical Characteristics

- **Compatible Fluids:** Compressed air  
Other fluids: please consult us
- **Working Pressure:** Vacuum to 20 bar
- **Working Temperature:** -20°C to +80°C

Tightening Torque (daN.m)	Threads								
	M3 x0.5	M5 x0.8	M7 x1	M10 x1	M12 x1.5	G1/8	G1/4	G3/8	G1/2
	0.06	0.16	0.8	0.8	1.1	0.8	1.2	3	3.5

Reliable performance is dependent upon the type of fluid conveyed, component materials and tubing being used.

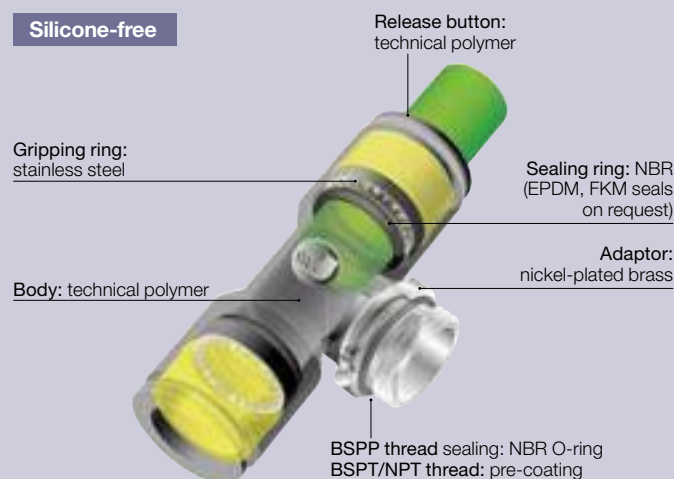
Use is guaranteed with a vacuum of 755 mm Hg (99% vacuum).

## Advantages

- Robust, lightweight, compact to build your pneumatic circuits
- Full flow connections to optimize flow rates
- Use in vacuum as well as in compressed air
- Customised products upon request. Please, contact us.

## Component Materials

Silicone-free

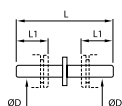


## Regulations

- ISO 14743
- PED
- RoHS
- REACH

## 3120 Stem Connector

Technical polymer



ØD		L	L1	Kg
4	<b>3120 04 00</b>	34.5	12	0.001
6	<b>3120 06 00</b>	38.5	14	0.001
8	<b>3120 08 00</b>	41	18.5	0.001
10	<b>3120 10 00</b>	51.5	20.5	0.002
12	<b>3120 12 00</b>	60	24.5	0.004
14	<b>3120 14 00</b>	69.5	25.5	0.007

This model exists in nickel-plated brass; please use suffix 85. Example: 3120 06 00 85  
Only compatible with Parker Legris fittings. Drawing available upon request.

DYSTRYBUTOR PARKER PREMIUM

**ARA**<sup>®</sup>  
PNEUMATIK

| arapneumatik.pl

PARKER STORE WROCŁAW  
pneumatyka@arapneumatik.pl  
TEL. 71 364 72 80

PARKER STORE KATOWICE  
katowice@arapneumatik.pl  
TEL. 32 779 76 40

**Parker Store**