

LF 3000® Push-In Fittings / Stud Fittings

Technical Characteristics

- **Compatible Fluids:** Compressed air
Other fluids: please consult us
- **Working Pressure:** Vacuum to 20 bar
- **Working Temperature:** -20°C to +80°C

Tightening Torque (daN.m)	Threads								
	M3 x0.5	M5 x0.8	M7 x1	M10 x1	M12 x1.5	G1/8	G1/4	G3/8	G1/2
	0.06	0.16	0.8	0.8	1.1	0.8	1.2	3	3.5

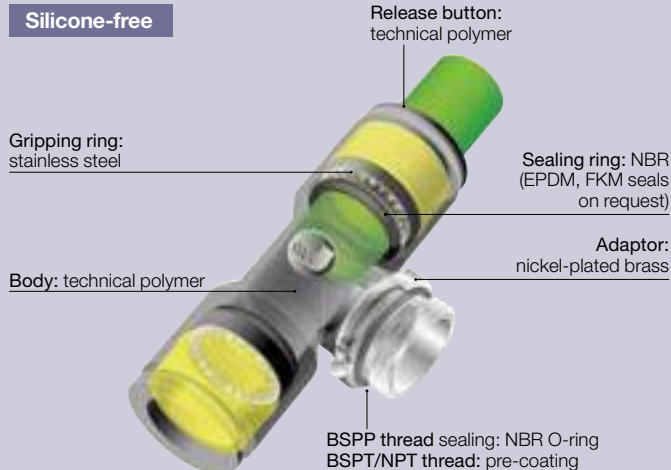
Reliable performance is dependent upon the type of fluid conveyed, component materials and tubing being used.

Use is guaranteed with a vacuum of 755 mm Hg (99% vacuum).

Advantages

- Robust, lightweight, compact to build your pneumatic circuits
- Full flow connections to optimize flow rates
- Use in vacuum as well as in compressed air
- Customised products upon request. Please, contact us.

Component Materials

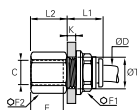


Regulations

- ISO 14743
- PED
- RoHS
- REACH

3136 Bulkhead Connector, Female BSPP Thread

Nickel-plated brass, NBR



ØD	C		E	F1	F2	K max	L1	L2	ØT min	Kg
4	G1/8	3136 04 10	9.5	13	13	7	17	11.5	10.5	0.015
	G1/4	3136 04 13	13.5	13	16	7	17	15.5	10.5	0.021
6	G1/8	3136 06 10	9.5	15	15	8	19	10.5	12.5	0.021
	G3/8	3136 06 17	12	15	22	8	19	16	12.5	0.041
8	G1/8	3136 08 10	9.5	18	17	8	20.5	10.5	15.5	0.029
	G1/4	3136 08 13	13.5	18	17	8	20.5	14.5	15.5	0.029
10	G3/8	3136 10 17	14	22	22	8.5	23	16	18.5	0.050
	G3/8	3136 12 17	14	26	24	8.5	27	16	22.5	0.079
12	G1/2	3136 12 21	19.5	26	27	8.5	27	21.5	22.5	0.098
	G3/8	3136 16 17	12	29	29	10.5	30	15	27.5	0.125
16	G3/8	3136 16 17	12	29	29	10.5	30	15	27.5	0.125
	G1/2	3136 16 21	15	29	29	10.5	30	19.5	27.5	0.126

DYSTRYBUTOR PARKER PREMIUM

ARA[®]
PNEUMATIK

| arapneumatik.pl

PARKER STORE WROCŁAW
pneumatyka@arapneumatik.pl
TEL. 71 364 72 80

PARKER STORE KATOWICE
katowice@arapneumatik.pl
TEL. 32 779 76 40

