

LF 3000® Push-In Fittings / Stud Fittings

Technical Characteristics

- **Compatible Fluids:** Compressed air
Other fluids: please consult us
- **Working Pressure:** Vacuum to 20 bar
- **Working Temperature:** -20°C to +80°C

Tightening Torque (daN.m)	Threads								
	M3 x0.5	M5 x0.8	M7 x1	M10 x1	M12 x1.5	G1/8	G1/4	G3/8	G1/2
	0.06	0.16	0.8	0.8	1.1	0.8	1.2	3	3.5

Reliable performance is dependent upon the type of fluid conveyed, component materials and tubing being used.

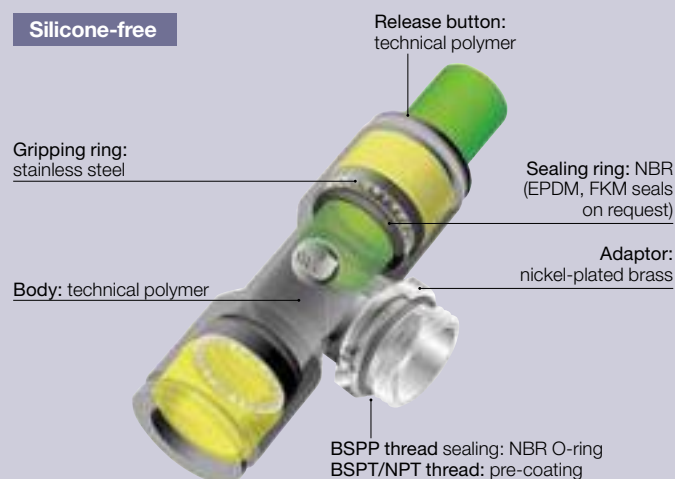
Use is guaranteed with a vacuum of 755 mm Hg (99% vacuum).

Advantages

- Robust, lightweight, compact to build your pneumatic circuits
- Full flow connections to optimize flow rates
- Use in vacuum as well as in compressed air
- Customised products upon request. Please, contact us.

Component Materials

Silicone-free

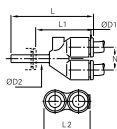


Regulations

- ISO 14743
- PED
- RoHS
- REACH

3142 Equal and Unequal Plug-In Single Y Piece

Technical polymer, NBR



ØD1	ØD2		L	L1	L2	N	Kg
4	4	3142 04 00	34	21.5	17.5	9	0.002
	6	3142 04 06	35.5	21.5	17.5	9	0.002
6	6	3142 06 00	39.5	25.5	21.5	11	0.004
	8	3142 06 08	44.5	26	22	11	0.006
8	8	3142 08 00	50.5	32	28	14.5	0.007
	10	3142 08 10	53.5	32	28	14.5	0.022
10	12	3142 10 12	60	35	33	17	0.035
	12	3142 12 00	66	41	39	20	0.017

DYSTRYBUTOR PARKER PREMIUM

ARA[®]
PNEUMATIK

| arapneumatik.pl

PARKER STORE WROCŁAW
pneumatyka@arapneumatik.pl
TEL. 71 364 72 80

PARKER STORE KATOWICE
katowice@arapneumatik.pl
TEL. 32 779 76 40

Parker Store