



AIR TORQUE

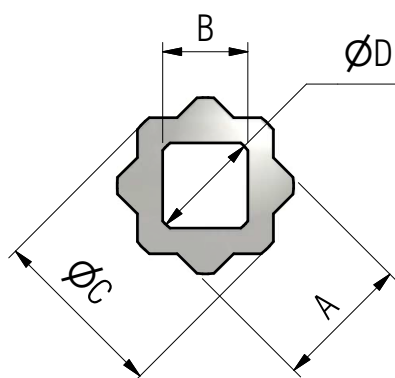
AIR TORQUE S.p.A.via dei Livelli di Sopra, n°/11
24060 Costa di Mezzate (Bg) Italy
Tel.: +39 035 682 299
Fax.: +39 035 687 791
E-mail: info@airtorque.it

T.D.S. n° U00009AE

Issued on: 10/15 - Page 2/2

DIMENSIONS OF SQUARE REDUCTIONS FOR DRIVE SHAFT

SQUARE REDUCTION FOR DRIVE SHAFT WITH DOUBLE SQUARE



REDUCTION	A	B	C	D	L
R11/9#D0001B	11	9	14	12.4	12
R14/9#D0101B	14	9	18	12.3	16
R14/10#D0102B	14	10	18	13.5	16
R14/11#D0103B	14	11	18	14.4	16
R14/12#D0104B	14	12	18	16.4	16
R17/10#D0202B	17	10	22	13.5	17
R17/11#D0203B	17	11	22	14.5	17
R17/12#D0204B	17	12	22	16.4	17
R17/14#D0205B	17	14	22	18.5	17 / 18.4
R22/14#D0305B	22	14	28	18.4	22
R22/16#D0306B	22	16	28	21.4	22
R22/17#D0307B	22	17	28	22.4	22
R27/22#D0408B	27	22	36	28.6	27

MATERIAL: STAINLESS STEEL

Więcej informacji - skontaktuj się z nami:

ARA

PNEUMATIKul. Wyścigowa 38 53-012 Wrocław
tel. +48 71 364 72 85, 691 112 333
armatura@arapneumatik.pl

arapneumatik.pl