



# AIR TORQUE

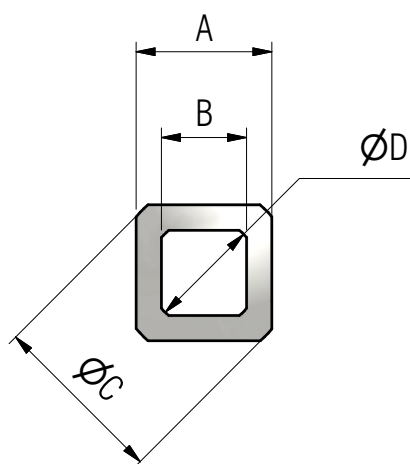
**AIR TORQUE S.p.A.**via dei Livelli di Sopra, n°8/11  
24060 Costa di Mezzate (Bg) Italy  
Tel.: +39 035 682 299  
Fax.: +39 035 687 791  
E-mail: info@airtorque.it

T.D.S. n° U00009AE

Issued on: 10/15 - Page 1/2

## DIMENSIONS OF SQUARE REDUCTIONS FOR DRIVE SHAFT

### SQUARE REDUCTION FOR DRIVE SHAFT WITH SINGLE SQUARE



REDUCTION	A	B	C	D	L
R11/8#S0000B	11	8	14	10.4	11
R11/9#S0001B	11	9	14	12.4	11
R14/8#S0101B	14	8	18	10.5	16
R14/9#S0101B	14	9	18	12.4	16
R14/10#S0102B	14	10	18	13.5	16
R14/11#S0103B	14	11	18	14.5	16
R17/10#S0202B	17	10	22	13.4	17
R17/11#S0203B	17	11	22	14.3	17
R17/12#S0204B	17	12	22	16.4	17
R17/14#S0205B	17	14	22	18.4	17
R22/14#S0305B	22	14	28	18.4	22
R22/16#S0306B	22	16	28	21.4	22
R22/17#S0307B	22	17	28	22.6	22
R27/22#S0408B	27	22	36	28.5	27
R27/24#S0409B	27	24	36	31	27
R36/22#S0508B	36	22	45	28.5	36
R36/27#S0510B	36	27	45	36.1	36
R36/30#S0511B	36	30	45	39.3	36

**MATERIAL: STAINLESS STEEL**

Więcej informacji - skontaktuj się z nami:

# ARA

  
**PNEUMATIK**ul. Wyścigowa 38 53-012 Wrocław  
tel. +48 71 364 72 85, 691 112 333  
armatura@arapneumatik.pl

arapneumatik.pl