
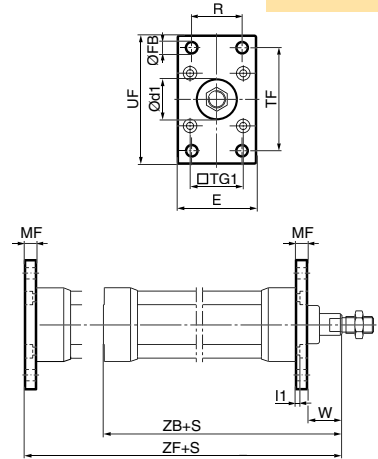



Type	Description	For mounting screws in stainless steel see page 51	Cyl. bore Ø mm	Weight kg	Order code
<b>Flange MF1/MF2</b> 	Intended for fixed mounting of cylinder. Flange can be fitted to front or rear end cover of cylinder.  Materials Flange: Surface-treated steel Mounting screws acc. to DIN 6912: Zinc-plated steel 8.8  Supplied complete with mounting screws for attachment to cylinder.		32	0,23	<b>P1C-4KMB</b> <b>P1C-4LMB</b> <b>P1C-4MMB</b> <b>P1C-4NMB</b> <b>P1C-4PMB</b> <b>P1C-4QMB</b> <b>P1C-4RMB</b>
			40	0,28	
			50	0,53	
			63	0,71	
			80	1,59	
			100	2,19	
125	3,78				

Cyl. bore mm	d1 mm	FB mm	TG1 mm	E mm	R JS14 mm	MF JS14 mm	TF JS14 mm	UF mm	I1 mm	W* mm	ZF* mm	ZB* mm
32	30	7	32,5	45	32	10	64	80	5,0	16	130	123,5
40	35	9	38,0	52	36	10	72	90	5,0	20	145	138,5
50	40	9	46,5	65	45	12	90	110	6,5	25	155	146,5
63	45	9	56,5	75	50	12	100	120	6,5	25	170	161,5
80	45	12	72,0	95	63	16	126	150	8,0	30	190	177,5
100	55	14	89,0	115	75	16	150	170	8,0	35	205	192,5
125	60	16	110,0	140	90	20	180	205	10,5	45	245	230,5

S = Stroke length \* Does not apply to cylinders with lock unit

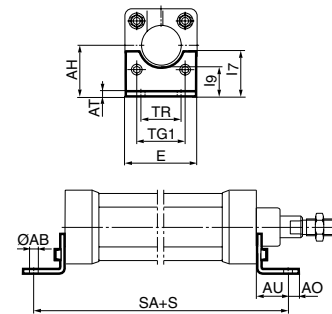



Type	Description	Materials	Cyl. bore Ø mm	Weight kg	Order code
<b>Foot brackets MS1</b> 	Intended for fixed mounting of cylinder. Foot bracket can be fitted to front and rear end covers of cylinder.  Materials Foot bracket: Surface-treated steel Mounting screws acc. to DIN 912: Zinc-plated steel 8.8  Supplied in pairs with mounting screws for attachment to cylinder.		32	0,06**	<b>P1C-4KMF</b> <b>P1C-4LMF</b> <b>P1C-4MMF</b> <b>P1C-4NMF</b> <b>P1C-4PMF</b> <b>P1C-4QMF</b> <b>P1C-4RMF</b>
			40	0,08**	
			50	0,16**	
			63	0,25**	
			80	0,50**	
			100	0,85**	
125	1,48**				

\*\* Weight per item

Cyl. bore mm	AB mm	TG1 mm	E mm	TR JS14 mm	AO mm	AU mm	AH JS15 mm	I7 mm	AT mm	I9 JS14 mm	SA* mm
32	7	32,5	45	32	10	24	32	30	4,5	17,0	142
40	9	38,0	52	36	8	28	36	30	4,5	18,5	161
50	9	46,5	65	45	13	32	45	36	5,5	25,0	170
63	9	56,5	75	50	13	32	50	35	5,5	27,5	185
80	12	72,0	95	63	14	41	63	49	6,5	40,5	210
100	14	89,0	115	75	15	41	71	54	6,5	43,5	220
125	16	110,0	140	90	22	45	90	71	8,0	60,0	250

S = Stroke length \* Does not apply to cylinders with lock unit



Type	Description	Materials	Cyl. bore Ø mm	Weight kg	Order code
<b>Pivot bracket with rigid bearing AB7</b> 	Intended for flexible mounting of cylinder. The pivot bracket can be combined with clevis bracket MP2.  Materials Pivot bracket: Surface-treated aluminium, black Bearing: Sintered oil-bronze bushing		32	0,06	<b>P1C-4KMD</b> <b>P1C-4LMD</b> <b>P1C-4MMD</b> <b>P1C-4NMD</b> <b>P1C-4PMD</b> <b>P1C-4QMD</b> <b>P1C-4RMD</b>
			40	0,08	
			50	0,15	
			63	0,20	
			80	0,33	
			100	0,49	
125	1,02				

Cyl. bore mm	CK mm	S5 H9 mm	K1 H13 mm	K2 JS14 mm	G1 JS14 mm	G2 JS14 mm	EM mm	G3 mm	CA JS15 mm	H6 mm	R1 mm
32	10	6,6	38	51	21	18	25,5	31	32	8	10,0
40	12	6,6	41	54	24	22	27,0	35	36	10	11,0
50	12	9,0	50	65	33	30	31,0	45	45	12	13,0
63	16	9,0	52	67	37	35	39,0	50	50	12	15,0
80	16	11,0	66	86	47	40	49,0	60	63	14	15,0
100	20	11,0	76	96	55	50	59,0	70	71	15	19,0
125	25	14,0	94	124	70	60	69,0	90	90	20	22,5

