
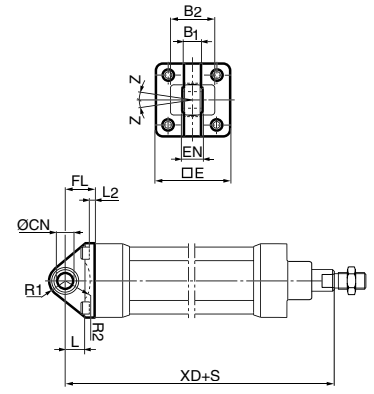



| Type | Description | For mounting screws in stainless steel see page 51 | Cyl. bore Ø mm | Weight kg | Order code |
|---|--|--|----------------|-----------|--|
|  Swivel eye bracket MP6 | Intended for use together with clevis bracket GA | | 32 | 0,08 | P1C-4KMSA P1C-4LMSA P1C-4MMSA P1C-4NMSA P1C-4PMSA P1C-4QMSA P1C-4RMSA |
| | Material | | 40 | 0,11 | |
| | Bracket: Surface-treated aluminium, black | | 50 | 0,20 | |
| | Swivel bearing acc. to DIN 648K: Hardened steel | | 63 | 0,27 | |
| | | | 80 | 0,52 | |
| | Supplied complete with mounting screws for attachment to cylinder. | | 100 | 0,72 | |
| | | 125 | 1,53 | | |

| Cyl. bore mm | E mm | B1 mm | B2 mm | EN mm | R1 mm | R2 mm | FL mm | I2 mm | L mm | CN H7 mm | XD* mm | Z ° |
|--------------|------|-------|-------|-------|-------|-------|-------|-------|------|----------|--------|-----|
| 32 | 45 | 10,5 | - | 14 | 16 | - | 22 | 5,5 | 12 | 10 | 142 | 4° |
| 40 | 52 | 12,0 | - | 16 | 18 | - | 25 | 5,5 | 15 | 12 | 160 | 4° |
| 50 | 65 | 15,0 | 51 | 21 | 21 | 19 | 27 | 6,5 | 15 | 16 | 170 | 4° |
| 63 | 75 | 15,0 | - | 21 | 23 | - | 32 | 6,5 | 20 | 16 | 190 | 4° |
| 80 | 95 | 18,0 | - | 25 | 29 | - | 36 | 10,0 | 20 | 20 | 210 | 4° |
| 100 | 115 | 18,0 | - | 25 | 31 | - | 41 | 10,0 | 25 | 20 | 230 | 4° |
| 125 | 140 | 25,0 | - | 37 | 40 | - | 50 | 10,0 | 30 | 30 | 275 | 4° |

S = Stroke length * Does not apply to cylinders with lock unit



| Type | Description | Materials | Cyl. bore mm | Weight kg | Order code |
|--|---|-----------|--------------|-----------|---|
|  Clevis bracket MP2 | Intended for flexible mounting of cylinder. Clevis bracket MP2 can be combined with clevis bracket MP4. | | 32 | 0,08 | P1C-4KMT P1C-4LMT P1C-4MMT P1C-4NMT P1C-4PMT P1C-4QMT P1C-4RMT |
| | Material | | 40 | 0,11 | |
| | Clevis bracket: Surface-treated aluminium, black | | 50 | 0,14 | |
| | Pin: Surface hardened steel | | 63 | 0,29 | |
| | Circlips according to DIN 471: Spring steel | | 80 | 0,36 | |
| | Mounting screws acc. to DIN 912: Zinc-plated steel 8.8 | | 100 | 0,64 | |
| | | 125 | 1,17 | | |
| | Supplied complete with mounting screws for attachment to cylinder. | | | | |

| Cyl. bore mm | C mm | E mm | UB mm | CB mm | FL mm | L mm | I2 mm | CD H9 mm | MR mm | XD* mm |
|--------------|------|------|-------|-------|-------|------|-------|----------|-------|--------|
| 32 | 53 | 45 | 45 | 26 | 22 | 13 | 5,5 | 10 | 10 | 142 |
| 40 | 60 | 52 | 52 | 28 | 25 | 16 | 5,5 | 12 | 12 | 160 |
| 50 | 68 | 65 | 60 | 32 | 27 | 16 | 6,5 | 12 | 12 | 170 |
| 63 | 78 | 75 | 70 | 40 | 32 | 21 | 6,5 | 16 | 16 | 190 |
| 80 | 98 | 95 | 90 | 50 | 36 | 22 | 10,0 | 16 | 16 | 210 |
| 100 | 118 | 115 | 110 | 60 | 41 | 27 | 10,0 | 20 | 20 | 230 |
| 125 | 139 | 140 | 130 | 70 | 50 | 30 | 10,0 | 25 | 25 | 275 |

S = Stroke length * Does not apply to cylinders with lock unit

