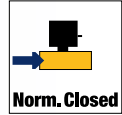


2/2

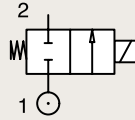
VALVES FOR ALL FLUIDS AND AIR DIRECT OPERATED



All Fluids & Air

2 WAY VALVES

BRASS PIPE MOUNTING NORMALLY CLOSED

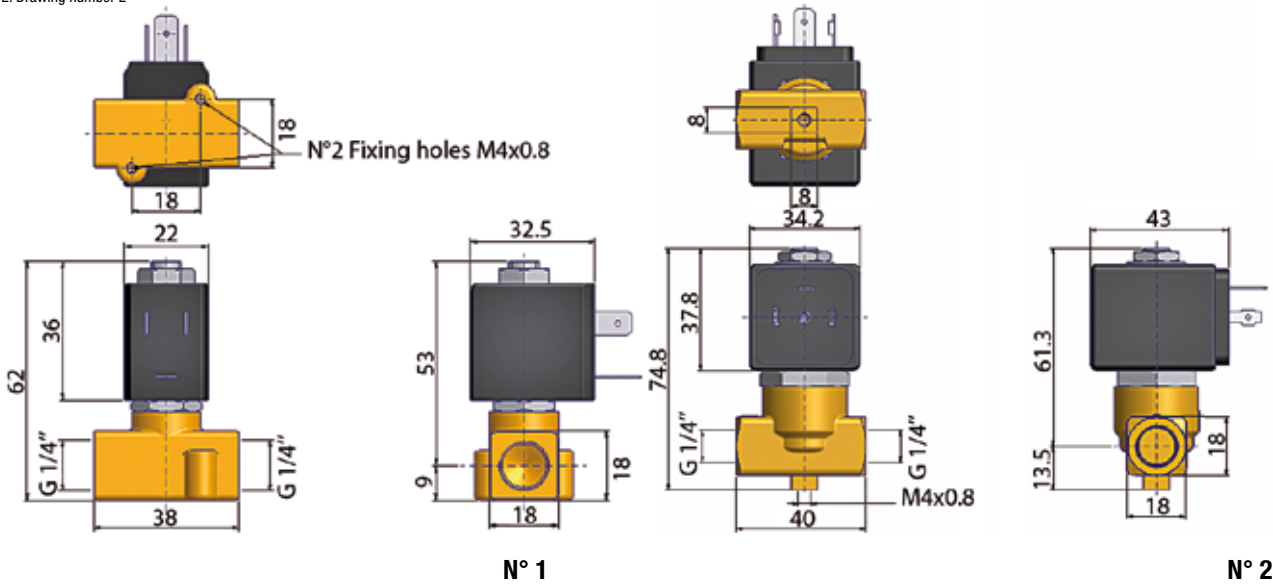


Port size	Orifice Ø	Flow factors			Seat Seal	Atex Zone	Operating Pressure Differential		Fluid Temp.		Power	Voltage	Solenoid Valve Order Number
		Kv l/min	KV m³/h	Qn l/min			Min bar	Max bar	Min °C	Max °C			
1/4"	2.5	2.3	0.14	-	FKM	-	0	10	-10	140	4.5	230V/50-60Hz	550061DIS ₁
		0	4				-10	140	5	24 Vdc	550060DIS ₁		
		0	10				-10	140	9	230V/50-60Hz	550098DIS ₂		
	3	3.3	0.20				0	10	-10	140	12	24 Vdc	550097DIS ₂
		0	7				-10	140	9	230V/50-60Hz	550100DIS ₂		
		0	2				-10	140	12	24 Vdc	550099DIS ₂		
		0	6				-10	140	14	230V/50-60Hz	550196DIS ₂		
		0	2.5				-10	140	16	24 Vdc	550092DIS ₂		
		0	6				-10	140	14	230V/50-60Hz	550091DIS ₂		
		0	1				-10	140	16	24 Vdc	550195DIS ₂		

Notes:

- Drawing number 1
- Drawing number 2

Fast Delivery



ARA[®]

PNEUMATIK

53-012 Wrocław tel. 71 364 72 82
ul. Wyścigowa 38 fax 71 364 72 83

www.arapneumatik.pl

