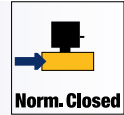
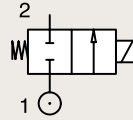


# 2/2

## VALVES FOR ALL FLUIDS AND AIR DIRECT OPERATED

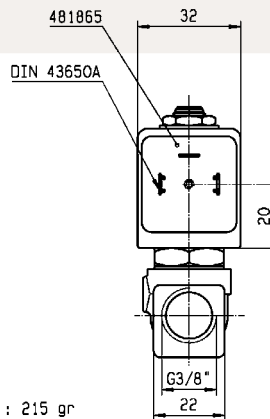
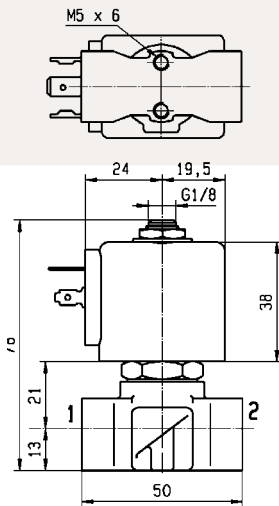


### BRASS PIPE MOUNTING NORMALLY CLOSED



Port size	Orifice Ø	Flow factors			Seat Seal	Atex Zone	Operating Pressure Differential		Fluid Temp.		Power	Voltage	Solenoid Valve Order Number
		Kv l/min	KV m³/h	Qn l/min			Min bar	Max bar	Min °C	Max °C			
3/8"	5	11	0.66	750	FKM	-	0	7	-10	100	8	220-230V/50Hz	121K3106-2995-4818653D
							0	2	-10	100	9	24 Vdc	121K3106-2995-481865C2
							0	5	-10	120	14	24 Vdc	121K3106-2995-492425C2
	6	12	0.72	1100		-	0	5	-10	120	8	220-230V/50Hz	121K3306-2995-4818653D
							0	5	-10	120	14	230V/50Hz	121K3306-2995-492425F4
							0	1.1	-10	120	9	24 Vdc	121K3306-2995-481865C2
							0	3	-10	120	14	24 Vdc	121K3306-2995-492425C2

Fast Delivery



WEIGHT : 215 gr



**ARA**<sup>®</sup>  
PNEUMATIK  
53-012 Wrocław tel. 71 364 72 82  
ul. Wyścigowa 38 fax 71 364 72 83  
[www.arapneumatik.pl](http://www.arapneumatik.pl)

