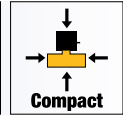
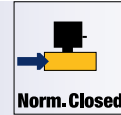
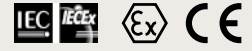
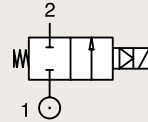


2/2

VALVES FOR ALL FLUIDS AND AIR PILOT OPERATED

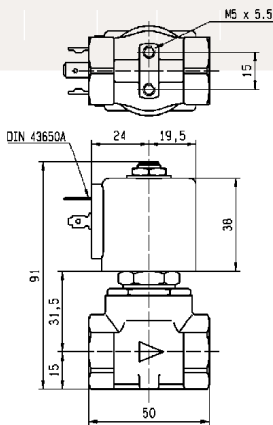


BRASS PIPE MOUNTING NORMALLY CLOSED

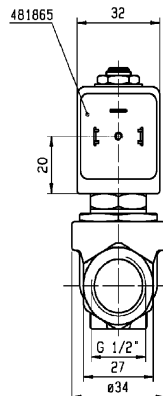
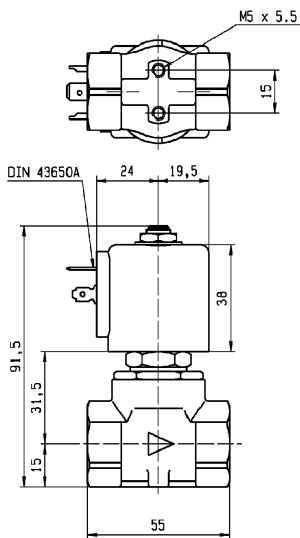
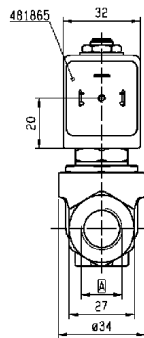


Port size	Orifice Ø	Flow factors			Seat Seal	Atex Zone	Operating Pressure Differential		Fluid Temp.		Power	Voltage	Solenoid Valve Order Number
		Kv l/min	KV m³/h	Qn l/min			Min bar	Max bar	Min °C	Max °C			
1/4"	11	28	1.68	1800	NBR	-	0.2	10	-10	100	8	220-230V/50Hz	E321K10-2995-4818653D
							0.2	3	-10	100	9	24 Vdc	E321K10-2995-481865C2
3/8"	11	36	2.16	2500	NBR	-	0.2	10	-10	100	8	220-230V/50Hz	E321K13-2995-4818653D
							0.2	3	-10	100	9	24 Vdc	E321K13-2995-481865C2
1/2"	11	36	2.16	2500	NBR	-	0.2	10	-10	100	8	220-230V/50Hz	E321K15-2995-4818653D
							0.2	3	-10	100	9	24 Vdc	E321K15-2995-481865C2
							0.2	10	-10	120	14	24 Vdc	E321K15-2995-492425C2

Fast Delivery



Valve	A
E321K13/63	G 3/8"
E321K10	G 1/4"



ARA®

PNEUMATIK

ul. Wyścigowa 38, 53-012 Wrocław
tel. 71 364 72 82, ara@arapneumatik.pl
www.arapneumatik.pl

