

2/2

VALVES FOR HOT WATER AND STEAM



The Parker 2 way valves (1 way for inlet and 1 way for outlet) for steam and hot water are robust constructions for fluid temperature up to 180°C. This includes the famous Ruby seal and also the stainless steel bodies for the harshest requirements.

Typical applications are:

- Laundries
- Plastic molding
- Heating systems
- Sterilization

These applications can be found in many markets like industries, medical, process, etc...

Actuation	Body	Function	Specification	Port Size	Orifice (mm)	MOPD (bar)	Page
Direct Operated (No minimum pressure required)	Brass/ Pipe Mounting	Normally Closed	-	1/8" to 1/4"	2.5 to 3	6	54
	303 Stainless St./ Pipe Mounting	Normally Closed	-	1/4"	1.5 to 5	6	55
Pilot Operated (Minimum pressure required)	Brass/ Pipe Mounting	Normally Closed	-	3/8" to 1"	10 to 27	13	56
Magnalift(No minimum pressure - High flow)	Brass/ Pipe Mounting	Normally Closed	High Performance	3/8" to 1"	15	10	57

ARA[®]
P N E U M A T I K

53-012 Wrocław tel. 71 364 72 82
ul. Wyścigowa 38 fax 71 364 72 83

www.arapneumatik.pl



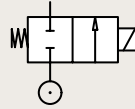
2/2

VALVES FOR HOT WATER AND STEAM DIRECT OPERATED



BRASS PIPE MOUNTING

NORMALLY CLOSED

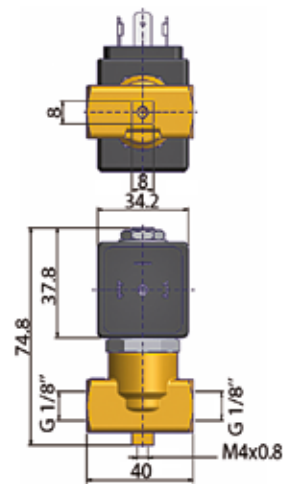


Port size	Orifice Ø	Flow factors			Seat Seal	Atex Zone	Operating Pressure Differential		Fluid Temp.		Power	Voltage	Solenoid Valve Order Number
		Kv l/min	KV m³/h	Qn l/min			Min bar	Max bar	Min °C	Max °C			
1/8"	2.5	3.2	0.20		Ruby		0	30	-30	140	9	230V/50-60Hz	550089DIS ₁
							0	17	-30	140	12	24 Vdc	550088DIS ₁
							0	30	-30	140	9	230V/50-60Hz	550085DIS ₁
							0	17	-30	140	12	24 Vdc	550084DIS ₁
1/4"	3	4.2	0.25		PTFE		0	10	-10	180	14	230V/50-60Hz	550221DIS ₂
							0	10	-10	180	16	24 Vdc	550222DIS ₂
		4	0.24		Ruby		0	30	-30	140	9	230V/50-60Hz	550087DIS ₂
							0	17	-30	140	12	24 Vdc	550086DIS ₂

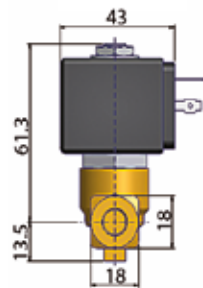
Notes:

1. Drawing number 1
2. Drawing number 2

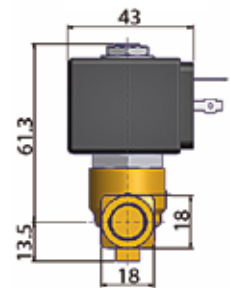
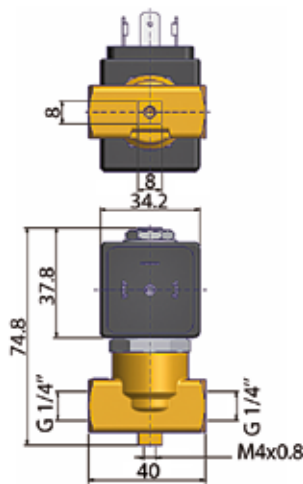
Fast Delivery



N° 1

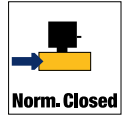


N° 2



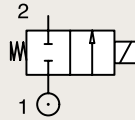
2/2

VALVES FOR HOT WATER AND STEAM DIRECT OPERATED



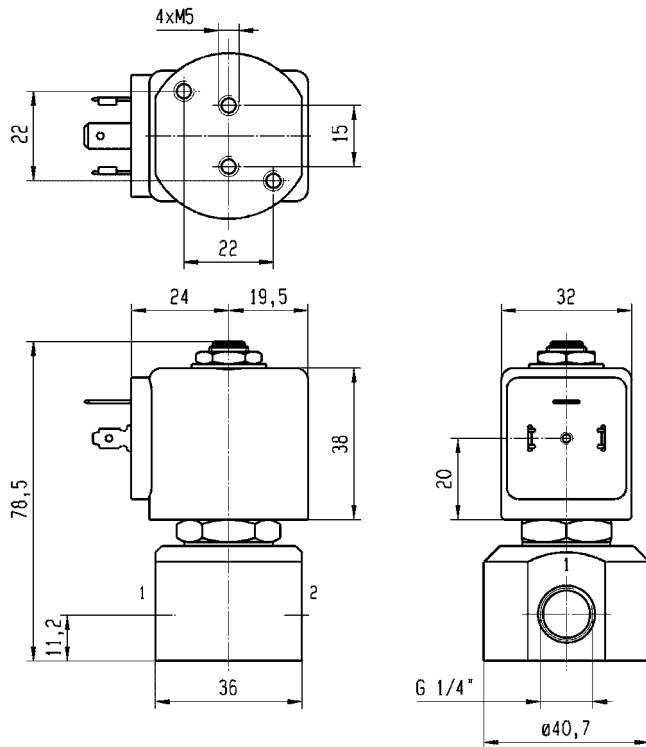
303 STAINLESS ST.
PIPE MOUNTING

NORMALLY CLOSED



Port size	Orifice Ø	Flow factors			Seat Seal	Atex Zone	Operating Pressure Differential		Fluid Temp.		Power	Voltage	Solenoid Valve Order Number
		Kv l/min	KV m³/h	Qn l/min			Min bar	Max bar	Min °C	Max °C			
1/4"	1.5	1.5	0.09	80	Ruby	-	0	60	0	100	8	220-230V/50Hz	121V5463-2995-4818653D
							0	25	0	140	9	24 Vdc	121V5463-2995-481865C2
	3	4.5	0.27	315			0	20	0	100	8	220-230V/50Hz	121V5363-2995-4818653D
							0	7	0	100	9	24 Vdc	121V5363-2995-481865C2
							5	10	0.60	750	0	8.5	0
0	2	0	100	9	24 Vdc	121V5163-2995-481865C2							

Fast Delivery



2 WAY VALVES

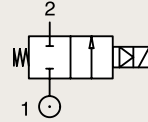
Hot Water & Steam

2/2

VALVES FOR HOT WATER AND STEAM PILOT OPERATED



BRASS PIPE MOUNTING NORMALLY CLOSED



Port size	Orifice Ø	Flow factors			Seat Seal	Atex Zone	Operating Pressure Differential		Fluid Temp.		Power	Voltage	Solenoid Valve Order Number
		Kv l/min	KV m³/h	Qn l/min			Min bar	Max bar	Min °C	Max °C			
3/8"	10	22	1.32	-	PTFE	-	0.5	16	-30	160	9	230V/50-60Hz	550104DIS ₁
	16	78	4.70				0.5	10	-30	180	14	230V/50-60Hz	550077DIS ₂
1/2"	10	24	1.44				0.5	16	-30	160	9	230V/50-60Hz	550101DIS ₁
	16	78	4.70				0.5	10	-30	180	14	230V/50-60Hz	550072DIS ₂
3/4"	18	37	2.22				0.5	14	-30	160	9	230V/50-60Hz	550102DIS ₁
	27	193	11.60				0.5	10	-30	180	14	230V/50-60Hz	550074DIS ₂
							0.5	10	-30	180	16	24 Vdc	550073DIS ₂
1"	18	42	2.52				0.5	14	-30	160	9	230V/50-60Hz	550103DIS ₁
	27	193	11.60				0.5	10	-30	180	14	230V/50-60Hz	550076DIS ₂
							0.5	10	-30	180	16	24 Vdc	550075DIS ₂

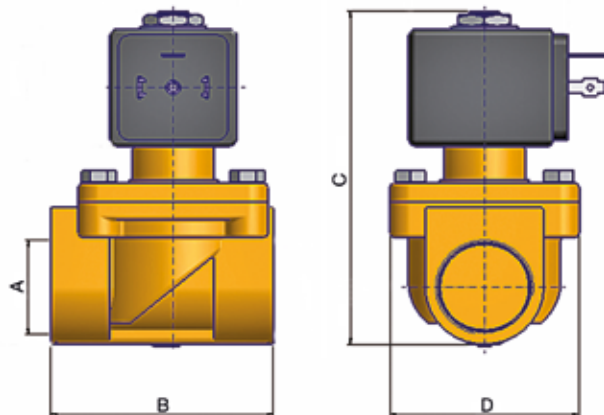
Notes:

- Drawing number 1
- Drawing number 2

Fast Delivery

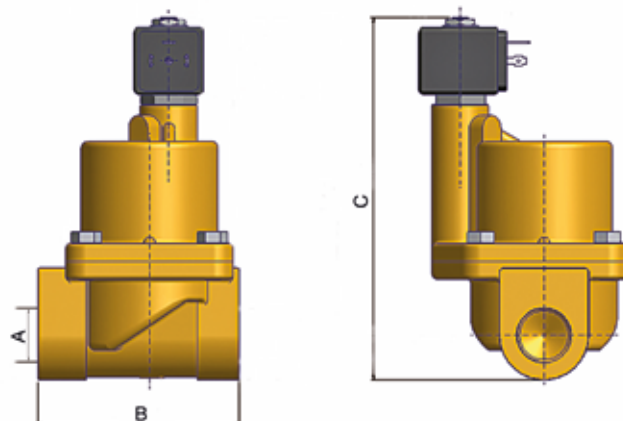
N° 1

A	B	C	D
G	mm	mm	mm
3/8"	48	85	40
1/2"	48	85	40
3/4"	48	85	40
1"	60	93.5	51



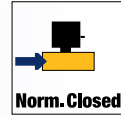
N° 2

A	B	C
G	mm	mm
3/8"	67	127
1/2"	67	127
3/4"	98.5	177
1"	98.5	177

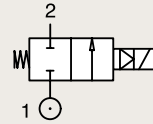


2/2

VALVES FOR HOT WATER AND STEAM MAGNALIFT

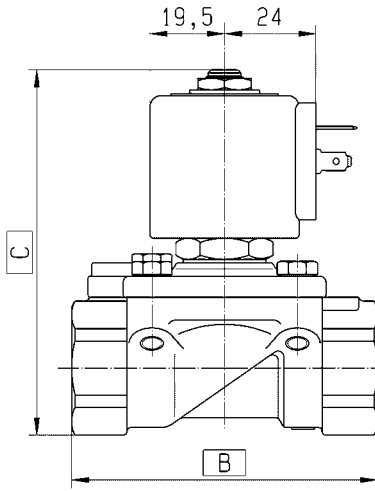
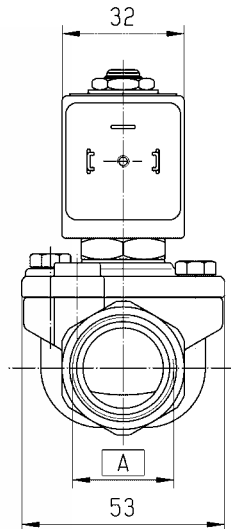


BRASS PIPE MOUNTING NORMALLY CLOSED



Port size	Orifice Ø	Flow factors			Seat Seal	Atex Zone	Operating Pressure Differential		Fluid Temp.		Power	Voltage	Solenoid Valve Order Number
		Kv l/min	KV m³/h	Qn l/min			Min bar	Max bar	Min °C	Max °C			
3/8"	15	65	3.90	-	EPDM	-	0	10	0	100	8	220-230V/50Hz	221G1303-2995-4818653D
1/2"							0	10	0	100	8	220-230V/50Hz	221G1503-2995-4818653D
3/4"		80	4.80				0	10	0	100	8	220-230V/50Hz	221G1603-2995-4818653D
1"							0	10	0	100	8	220-230V/50Hz	221G1703-2995-4818653D

Fast Delivery



	A	B	C
G 3/8"	75	93	
G 1/2"	75	93	
G 3/4"	80	95,5	
G 1"	85	102,5	

2 WAY VALVES

Hot Water & Steam

ARA[®]

PNEUMATIK

53-012 Wrocław tel. 71 364 72 82
ul. Wyścigowa 38 fax 71 364 72 83

www.arapneumatik.pl

