

## Mountings

Flange MF1 / MF2 ①



Foot brackets MS1 ②



Pivot bracket with rigid bearing AB7 ③



Swivel eye bracket MP6 ④



Clevis bracket MP2 ⑤



Ø32	P1C-4KMB	P1C-4KMF	P1C-4KMDB	P1C-4KMSB	P1C-4KMTB
Ø40	P1C-4LMB	P1C-4LMF	P1C-4LMDB	P1C-4LMSB	P1C-4LMTB
Ø50	P1C-4MMB	P1C-4MMF	P1C-4MMDB	P1C-4MMSB	P1C-4MMTB
Ø63	P1C-4NMB	P1C-4NMF	P1C-4NMDB	P1C-4NMSB	P1C-4NMTB
Ø80	P1C-4PMB	P1C-4PMF	P1C-4PMDB	P1C-4PMSB	P1C-4PMTB
Ø100	P1C-4QMB	P1C-4QMF	P1C-4QMDB	P1C-4QMSB	P1C-4QMTB
Ø125	P1C-4RMB	P1C-4RMF	P1C-4RMDB	P1C-4RMSB	P1C-4RMTB

Clevis bracket MP4 ⑥



Clevis bracket AB6 ⑦



Pivot bracket with swivel bearing CS7 ⑧



3 and 4 position flange JP1 ⑨



Pivot brackets AT4 ⑩



Ø32	P1C-4KMEB	P1C-4KMCB	P1C-4KMAF	P1E-6KB0	9301054261
Ø40	P1C-4LMEB	P1C-4LMCB	P1C-4LMAF	P1E-6LB0	9301054262
Ø50	P1C-4MMEB	P1C-4MMCB	P1C-4MMAF	P1E-6MB0	9301054262
Ø63	P1C-4NMEB	P1C-4NMCB	P1C-4NMAF	P1E-6NB0	9301054264
Ø80	P1C-4PMEB	P1C-4PMCB	P1C-4PMAF	P1E-6PB0	9301054264
Ø100	P1C-4QMEB	P1C-4QMCB	P1C-4QMAF	P1E-6QB0	9301054266
Ø125	P1C-4RMEB	P1C-4RMCB	P1C-4RMAF		9301054266

Flange trunnion MT5/MT6 ⑪



Intermediate trunnion MT4 ⑫



Swivel rod eye AP6 ⑬



Clevis AP2 ⑭



Flexo coupling PM5 ⑮



Ø32	P1D-4KMYF	Factory fitted	P1C-4KRS	P1C-4KRC	P1C-4KRF
Ø40	P1D-4LMYF	Factory fitted	P1C-4LRS	P1C-4LRC	P1C-4LRF
Ø50	P1D-4MMYF	Factory fitted	P1C-4MRS	P1C-4MRC	P1C-4MRF
Ø63	P1D-4NMYF	Factory fitted	P1C-4MRS	P1C-4MRC	P1C-4MRF
Ø80	P1D-4PMYF	Factory fitted	P1C-4PRS	P1C-4PRC	P1C-4PRF
Ø100	P1D-4QMYF	Factory fitted	P1C-4PRS	P1C-4PRC	P1C-4PRF
Ø125		Factory fitted	P1C-4RRS	P1C-4RRC	P1C-4RRF

Nut MR9 (pack of 10) ⑯

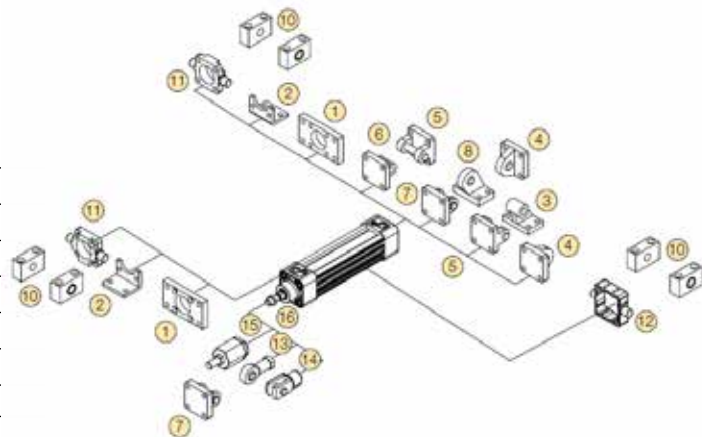
Zinc plated steel



Stainless steel



Ø32	P14-4KRPZ	P14-4KRPS
Ø40	P14-4LRPZ	P14-4LRPS
Ø50	P14-4MRPZ	P14-4MRPS
Ø63	P14-4MRPZ	P14-4MRPS
Ø80	P14-4PRPZ	P14-4PRPS
Ø100	P14-4PRPZ	P14-4PRPS
Ø125	P14-4RRPZ	P14-4RRPS



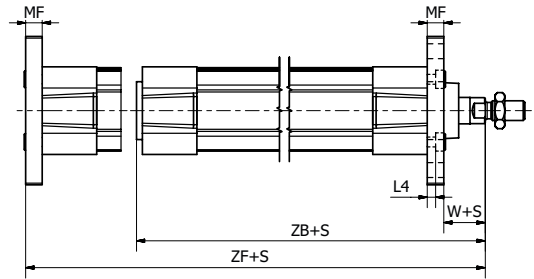
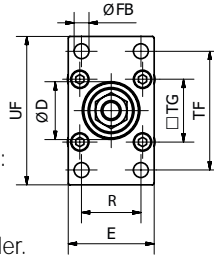
Flange - MF1 / MF2



Intended for fixed mounting of cylinder. Flange can be fitted to front or rear end cover of cylinder.

**Materials:**

Flange: Surface-treated steel  
 Mounting screws acc. to DIN 6912:  
 Zinc-plated steel 8.8  
 Supplied complete with mounting screws for attachment to the cylinder.



According to ISO 15552

Cyl.-bore	D <sub>(H11)</sub>	E	ØFB <sub>(H13)</sub>	L4	MF	R	TF	TG	UF	W*	ZB*	ZF*	Weight	Order code
[mm]	[mm]	[mm]	[mm]	[mm]	[mm]	[mm]	[mm]	[mm]	[mm]	[mm]	[mm]	[mm]	[kg]	
Ø32	30	45	7	5.0	10	32	64	32.5	80	16	123.5	130	0.21	<b>P1C-4KMB</b>
Ø40	35	52	9	5.0	10	36	72	38.0	90	20	138.5	145	0.27	<b>P1C-4LMB</b>
Ø50	40	65	9	6.5	12	45	90	46.5	110	25	146.5	155	0.53	<b>P1C-4MMB</b>
Ø63	45	75	9	6.5	12	50	100	56.5	120	25	161.5	170	0.66	<b>P1C-4NMB</b>
Ø80	45	95	12	9.0	16	63	126	72.0	150	30	177.5	190	1.45	<b>P1C-4PMB</b>
Ø100	55	115	14	9.0	16	75	150	89.0	170	35	192.5	205	1.60	<b>P1C-4QMB</b>
Ø125	60	140	16	10.5	20	90	180	110.0	205	45	230.5	245	3.34	<b>P1C-4RMB</b>

\*Does not apply to cylinders with piston rod extension or lock units.

Foot Bracket - MS1

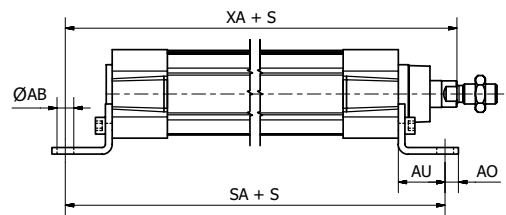
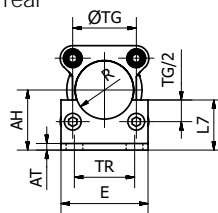


Intended for fixed mounting of cylinder. Foot bracket can be fitted to front or rear end cover of the cylinder.

**Materials:**

Flange: Surface-treated steel  
 Mounting screws acc. to DIN 6912:  
 Zinc-plated steel 8.8:

Supplied complete with mounting screws for attachment to the cylinder.



According to ISO 15552

Cyl.-bore	ØAB <sub>(H14)</sub>	AH <sub>(JS15)</sub>	AO	AT	AU	E	L7	R	SA*	TG	TR <sub>(JS14)</sub>	XA*	Weight **	Order code
[mm]	[mm]	[mm]	[mm]	[mm]	[mm]	[mm]	[mm]	[mm]	[mm]	[mm]	[mm]	[mm]	[kg]	
Ø32	7.0	32	11	4	24	45	30	15.0	142	32.5	32	144	0.08	<b>P1C-4KMF</b>
Ø40	10.0	36	8	4	28	52	30	17.5	161	38.0	36	163	0.09	<b>P1C-4LMF</b>
Ø50	10.0	45	15	5	32	65	36	20.0	170	46.5	45	175	0.18	<b>P1C-4MMF</b>
Ø63	10.0	50	13	5	32	75	35	22.5	185	56.5	50	190	0.20	<b>P1C-4NMF</b>
Ø80	12.0	63	14	6	41	95	47	22.5	210	72.0	63	215	0.40	<b>P1C-4PMF</b>
Ø100	14.5	71	16	6	41	115	53	27.5	220	89.0	75	230	0.54	<b>P1C-4QMF</b>
Ø125	16.5	90	25	8	45	140	70	30.0	250	110.0	90	270	1.10	<b>P1C-4RMF</b>

\*Does not apply to cylinders with piston rod extension or lock units.

\*\* per bracket

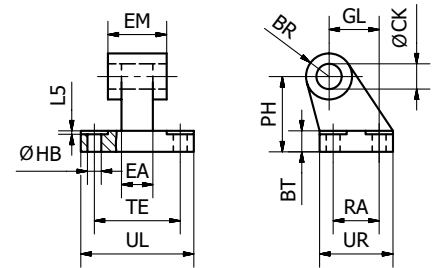
### Pivot Bracket with Rigid Bearing - AB7



Intended for flexible mounting of cylinder. The pivot bracket can be combined with clevis bracket MP2.

**Materials:**

Pivot bracket: Aluminium  
 Bush: Steel and PTFE



**According to ISO 15552**

Cyl.-bore	CK	HB	L5	TE	UL	GL	RA	EA	EM	UR	PH	BT	BR	Weight	Order code
[mm]	[mm]	[mm]	[mm]	[mm]	[mm]	[mm]	[mm]	[mm]	[mm]	[mm]	[mm]	[mm]	[mm]	[kg]	
Ø32	10	6.6	1.6	38	51	21	18	10	26	31	32	8	10.0	0.05	<b>P1C-4KMDB</b>
Ø40	12	6.6	1.6	41	54	24	22	15	28	35	36	10	11.0	0.09	<b>P1C-4LMDB</b>
Ø50	12	9.0	1.6	50	65	33	30	16	32	45	45	12	13.0	0.16	<b>P1C-4MMDB</b>
Ø63	16	9.0	1.6	52	67	37	35	16	40	50	50	14	15.0	0.20	<b>P1C-4NMDB</b>
Ø80	16	11.0	2.5	66	86	47	40	20	50	60	63	14	15.0	0.32	<b>P1C-4PMDB</b>
Ø100	20	11.0	2.5	76	96	55	50	20	60	70	71	17	19.0	0.53	<b>P1C-4QMDB</b>
Ø125	25	14.0	3.2	94	124	70	60	30	70	90	90	20	22.5	1.01	<b>P1C-4RMDB</b>

### Swivel Eye Bracket - MP6

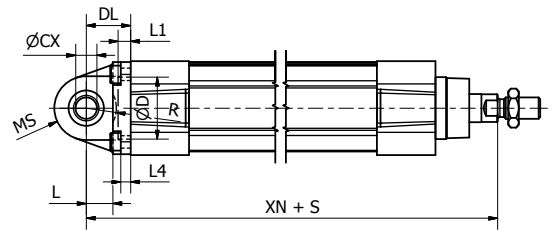
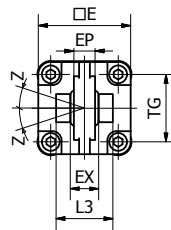


Intended for use together with clevis bracket AB6.

**Materials:**

Bracket: Aluminium  
 Swivel bearing acc. to DIN 648K:  
 Hardened steel

Supplied complete with mounting screws for attachment to cylinder.



**According to ISO 15552**

Cyl.-bore	CX	D	DL	E	EP	EX	L	L1	L3	L4	MS	R	TG	XN	Z	Weight	Order code
[mm]	[mm]	[mm]	[mm]	[mm]	[mm]	[mm]	[mm]	[mm]	[mm]	[mm]	[mm]	[mm]	[mm]	[mm]		[kg]	
Ø32	10	30	22	45	10.5	14	12	7	-	5.5	16	-	32.5	142	4°	0.09	<b>P1C-4KMSB</b>
Ø40	12	35	25	52	12	16	15	7	-	5.5	18	-	38	160	4°	0.13	<b>P1C-4LMSB</b>
Ø50	16	40	27	65	15	21	15	7	51	6.5	21	19	46.5	170	4°	0.24	<b>P1C-4MMSB</b>
Ø63	16	45	32	75	15	21	20	7	-	6.5	23	-	56.5	190	4°	0.29	<b>P1C-4NMSB</b>
Ø80	20	45	36	95	18	25	20	9	74	10	28	24	72	210	4°	0.59	<b>P1C-4PMSB</b>
Ø100	20	55	41	115	18	25	25	9	140	10	30	32	89	230	4°	0.78	<b>P1C-4QMSB</b>
Ø125	30	60	50	140	25	37	30	9	-	10	40	-	110	275	4°	1.38	<b>P1C-4RMSB</b>

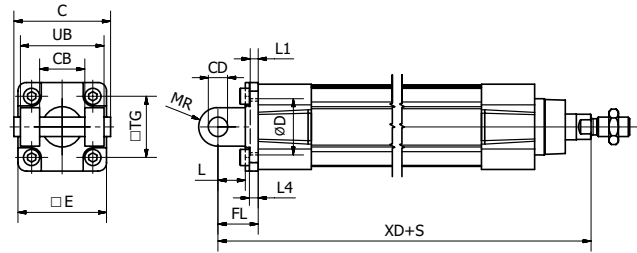
### Clevis Bracket - MP2



Intended for flexible mounting of cylinder.  
Can be combined with clevis bracket MP4 and pivot bracket with rigid bearing AB7.

**Materials:**

Clevis bracket: Aluminium  
Pin: Surface hardened steel  
Locking pin: Spring steel  
Circlips according to DIN 471:  
Spring steel  
Mounting screws acc. to DIN 912:  
Zinc-plated steel 8.8



Supplied complete with mounting screws for attachment to the cylinder.

**According to ISO 15552**

Cyl.-bore	C	E	UB	CB	TG	FL	L1	L	L4	D	CD	MR	XD	Weight	Order code
[mm]	[mm]	[mm]	[mm]	[mm]	[mm]	[mm]	[mm]	[mm]	[mm]	[mm]	[mm]	[mm]	[mm]	[kg]	
Ø32	53	45	45	26	32.5	22	5	13	5.5	30	10	10	142	0.08	<b>P1C-4KMTB</b>
Ø40	60	52	52	28	38	25	5	16	5.5	35	12	12	160	0.10	<b>P1C-4LMTB</b>
Ø50	68	65	60	32	46.5	27	5	16	6.5	40	12	12	170	0.18	<b>P1C-4MMTB</b>
Ø63	78	75	70	40	56.5	32	5	21	6.5	45	16	16	190	0.24	<b>P1C-4NMTB</b>
Ø80	98	95	90	50	72	36	5	22	10	45	16	16	210	0.49	<b>P1C-4PMTB</b>
Ø100	118	115	110	60	89	41	5	27	10	55	20	20	230	0.73	<b>P1C-4QMTB</b>
Ø125	139	140	130	70	110	50	7	30	10	60	25	25	275	1.37	<b>P1C-4RMTB</b>

\*Does not apply to cylinders with piston rod extension or lock units.

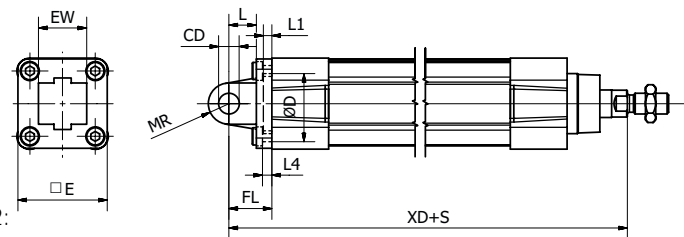
### Clevis Bracket - MP4



Intended for flexible mounting of cylinder. Clevis bracket MP4 can be combined with clevis bracket MP2.

**Materials:**

Clevis bracket: Aluminium  
Bush: PTFE  
Mounting screws acc. to DIN 912:  
Zinc-plated steel 8.8



Supplied complete with mounting screws for attachment to the cylinder.

**According to ISO 15552**

Cyl.-bore	CD	D	E	EW	FL	L	L1	L4	MR	TG	XD	Weight	Order code
[mm]	[mm]	[mm]	[mm]	[mm]	[mm]	[mm]	[mm]	[mm]	[mm]	[mm]	[mm]	[kg]	
Ø32	10	30	47	26	22	12	6.5	6	10.5	32.5	142	0.08	<b>P1C-4KMEB</b>
Ø40	12	35	52	28	25	16	5	5.5	12	38	160	0.11	<b>P1C-4LMEB</b>
Ø50	12	40	65	32	27	16	5	6.5	12	46.5	170	0.18	<b>P1C-4MMEB</b>
Ø63	16	45	78	40	32	21	5	6.5	16	56.5	190	0.28	<b>P1C-4NMEB</b>
Ø80	16	45	95	50	36	22	5	10	16	72	210	0.52	<b>P1C-4PMEB</b>
Ø100	20	55	115	60	41	27	5	10	20	89	230	0.79	<b>P1C-4QMEB</b>
Ø125	25	60	140	70	50	30	7	10	25	110	275	1.46	<b>P1C-4RMEB</b>

\*Does not apply to cylinders with piston rod extension or lock units.

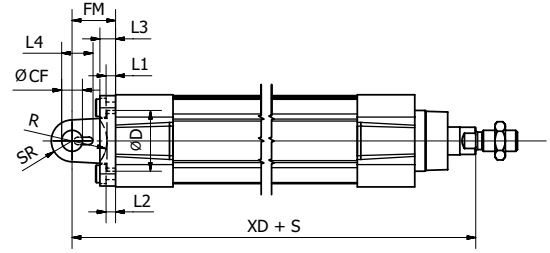
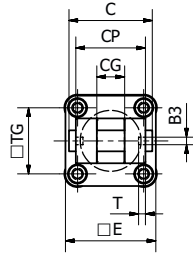
### Clevis Bracket - AB6



Intended for flexible mounting of cylinder.  
 Clevis bracket AB6 can be combined with pivot brackets MP6 and CS7 or swivel rod eye AP6.

**Materials:**

Clevis bracket: Aluminium  
 Pin: Surface hardened steel  
 Locking pin: Spring steel  
 Circlips according to DIN 471: Spring steel  
 Mounting screws acc. to DIN 912: Zinc-plated steel 8.8  
 Supplied complete with mounting screws for attachment to the cylinder.



**According to ISO 15552**

Cyl-bore	B3	C	CF	CG	CP	D	E	FM	I2	T	R	L1	L4	L3	SR	TG	XD*	Weight	Order code
[mm]	[mm]	[mm]	[mm]	[mm]	[mm]	[mm]	[mm]	[mm]	[mm]	[mm]	[mm]	[mm]	[mm]	[mm]	[mm]	[mm]	[mm]	[kg]	
Ø32	3.3	41	10	14	34	30	45	22	5.5	3	17	5	16.5	9	10	32.5	142	0.04	<b>P1C-4KMCB</b>
Ø40	4.3	48	12	16	40	35	52	25	5.5	4	20	5	18	9	12	38	160	0.07	<b>P1C-4LMCB</b>
Ø50	4.3	54	16	21	45	40	65	27	6.5	4	22	5	22	11	14	46.5	170	0.11	<b>P1C-4MMCB</b>
Ø63	4.3	60	16	21	51	45	75	32	6.5	4	25	5	22	11	18	56.5	190	0.19	<b>P1C-4NMCB</b>
Ø80	4.3	75	20	25	65	45	95	36	10.0	4	30	5	26	14	20	72	210	0.38	<b>P1C-4PMCB</b>
Ø100	6.3	85	20	25	75	55	115	41	10.0	4	32	5	26	14	22	89	230	0.61	<b>P1C-4QMCB</b>
Ø125	6.3	110	30	37	97	60	140	50	10.0	6	42	7	39	20	25	110	275	1.10	<b>P1C-4RMCB</b>

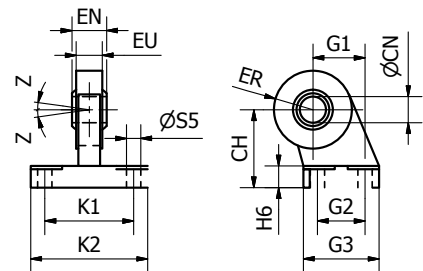
### Pivot Bracket with Swivel Bearing - CS7



Intended for use together with clevis bracket AB6.

**Materials:**

Pivot bracket: Surface-treated steel  
 Swivel bearing acc. to DIN 648K:  
 Hardened steel



**According to ISO 15552**

Cyl-bore	CN	S5	K1	K2	EU	G1	G2	EN	G3	CH	H6	ER	Z	Weight	Order code
[mm]	[mm]	[mm]	[mm]	[mm]	[mm]	[mm]	[mm]	[mm]	[mm]	[mm]	[mm]	[mm]	[mm]	[kg]	
Ø32	10	6.6	38	51	10.5	21	18	14	31	32	10	15	4°	0.18	<b>P1C-4KMAF</b>
Ø40	12	6.6	41	54	12.0	24	22	16	35	36	10	18	4°	0.27	<b>P1C-4LMAF</b>
Ø50	16	9.0	50	65	15.0	33	30	21	45	45	12	20	4°	0.46	<b>P1C-4MMAF</b>
Ø63	16	9.0	52	67	15.0	37	35	21	50	50	12	23	4°	0.55	<b>P1C-4NMAF</b>
Ø80	20	11.0	66	86	18.0	47	40	25	60	63	14	27	4°	0.97	<b>P1C-4PMAF</b>
Ø100	20	11.0	76	96	18.0	55	50	25	70	71	15	30	4°	1.33	<b>P1C-4QMAF</b>
Ø125	30	13.5	94	124	25.0	70	60	37	90	90	20	40	4°	3.00	<b>P1C-4RMAF</b>

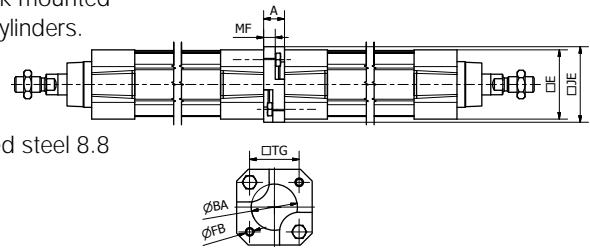
\*Does not apply to cylinders with piston rod extension or lock units.

### 3 and 4 Position Flange - JP1



Mounting kit for back to back mounted cylinders, 3 and 4 position cylinders.

**Materials:**  
Mounting: Aluminium  
Mounting screws: Zinc-plated steel 8.8



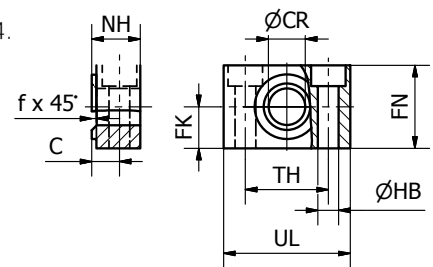
Cyl.-bore	A	ØBA	E	ØFB	JE	MF	TG	Weight	Order code
[mm]	[mm]	[mm]	[mm]	[mm]	[mm]	[mm]	[mm]	[kg]	
Ø32	16	30	47	6.5	50	9	32.5	0.04	<b>P1E-6KB0</b>
Ø40	16	35.5	53	6.5	58	9	38.0	0.07	<b>P1E-6LB0</b>
Ø50	20	40.5	64.5	8.5	66	6	46.5	0.08	<b>P1E-6MB0</b>
Ø63	20	45.5	75	8.5	80	6	56.5	0.16	<b>P1E-6NB0</b>
Ø80	25	45.5	94	10.5	99	8	72.0	0.30	<b>P1E-6PB0</b>
Ø100	25	55.5	111	10.5	118	8	89.0	0.54	<b>P1E-6QB0</b>

### Pivot Brackets for MT Trunnion - AT4



Intended for use together with trunnion MT4.

**Materials:**  
Pivot bracket: Surface-treated aluminium  
Bush: Bronze  
Supplied in pairs



#### According to ISO 15552

Cyl.-bore	UL	NH	TH	C	CR	HB	FN	FK	fx45°	Weight	Order code
[mm]	[mm]	[mm]	[mm]	[mm]	[mm]	[mm]	[mm]	[mm]	[mm]	[kg]	
Ø32	46	18	32	10.5	12	6.6	30	15	1.0	0.08	<b>9301054261</b>
Ø40	55	21	36	12.0	16	9	36	18	1.6	0.14	<b>9301054262</b>
Ø50	55	21	36	12.0	16	9	36	18	1.6	0.14	<b>9301054262</b>
Ø63	65	23	42	13.0	20	11	40	20	1.6	0.21	<b>9301054264</b>
Ø80	65	23	42	13.0	20	11	40	20	1.6	0.21	<b>9301054264</b>
Ø100	75	28.5	50	16.0	25	14	50	25	2.0	0.36	<b>9301054266</b>
Ø125	75	28.5	50	16.0	25	14	50	25	2.0	0.36	<b>9301054266</b>

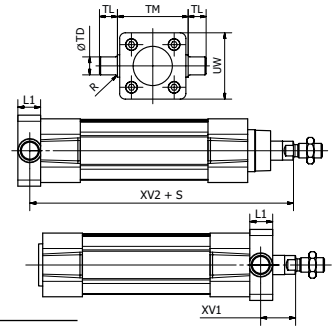
**Flange Trunnion - MT5 / MT6**



Intended for articulated mounting of cylinder. This trunnion can be flange mounted on the front or rear end cover of the cylinder.

**Materials:**

Trunnion: Zinc-plated steel  
 Screws: Zinc-plated steel 8.8  
 Delivered complete with mounting screws for attachment to the cylinder.



**According to ISO 15552**

Cyl.-bore	L1	R	TD <sub>(e9)</sub>	TL <sub>(h14)</sub>	TM <sub>(h14)</sub>	UW	XV1*	XV2*	Weight	Order code
[mm]	[mm]	[mm]	[mm]	[mm]	[mm]	[mm]	[mm]	[mm]	[kg]	
Ø32	14	1.0	12	12	50	46	19.5	127.0	0.14	<b>P1D-4KMYF</b>
Ø40	19	1.6	16	16	63	59	21.0	144.5	0.39	<b>P1D-4LMYF</b>
Ø50	19	1.6	16	16	75	69	28.0	152.5	0.51	<b>P1D-4MMYF</b>
Ø63	24	1.6	20	20	90	84	25.5	170.0	1.04	<b>P1D-4NMYF</b>
Ø80	24	1.6	20	20	110	102	34.5	186.0	1.57	<b>P1D-4PMYF</b>
Ø100	29	2.0	25	25	132	125	37.0	203.5	3.00	<b>P1D-4QMYF</b>

\*Does not apply to cylinders with piston rod extension or lock units.  
 To fit a flange mounted trunnion at the front end cover of a cylinder with lock unit, the piston rod must be extended. This is in order to provide the same WH dimensions as for the P1F base cylinder.

**Centre Trunnion - MT4**

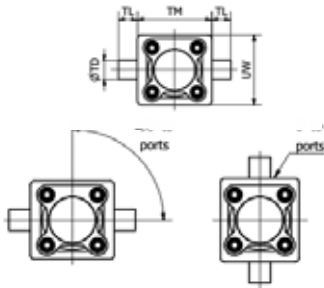
**Centre Trunnion Smooth Profile Tube**



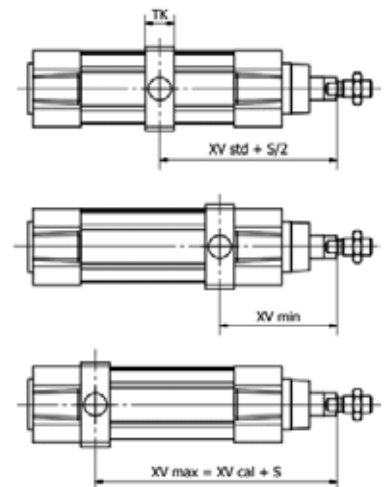
Available for P1F Profile and tie rod versions the MT4 centre trunnion when combined with AT4 pivot brackets is intended for articulated mounting of the cylinder. The trunnion is free so that it can be fixed afterward when the cylinder is at the right place on the machine.

**Material:** Zinc plated steel

**Centre Trunnion Tie-Rods Tube**



**Trunnion loose.** The centre trunnion can also be supplied loosely fitted to the cylinder (not fixed in position). This allows the position to be set at the time of installation. Order with a letter / number in position 17 and 000 in positions 18-20. Please refer to the order code key. Note: No decimals are used in positions 18-20.



**According to ISO 15552**

Cyl.-bore	TL <sub>(h14)</sub>	TM <sub>(h14)</sub>	ØTD <sub>e9</sub>	XV <sub>std</sub>	P1F-S/K				P1F-T/N				P1F-L	P1F-H	Order Code	
					TK	UW	XV <sub>min</sub>	XV <sub>cal</sub>	TK	UW	XV <sub>min</sub>	XV <sub>cal</sub>			Adder to XV	
[mm]	[mm]	[mm]	[mm]	[mm]	[mm]	[mm]	[mm]	[mm]	[mm]	[mm]	[mm]	[mm]	[mm]	[mm]	Smooth Profile	Tie-Rods
Ø32	12	50	12	73.0	18	52	78.0	68.0	15	46	63.0	83.0	32.0	48.0	<b>P1F-4KMY</b>	<b>P1F-4KMYT</b>
Ø40	16	63	16	83.0	20	60	84	81.0	20	59	74.0	91.0	30.0	55.0	<b>P1F-4LMY</b>	<b>P1F-4LMYT</b>
Ø50	16	75	16	90.0	20	71	97	83.0	20	69	82.0	98.0	29.0	70.0	<b>P1F-4MMY</b>	<b>P1F-4MMYT</b>
Ø63	20	90	20	98.0	26	84	100	95.0	25	84	90.0	105.0	39.0	70.0	<b>P1F-4NMY</b>	<b>P1F-4NMYT</b>
Ø80	20	110	20	110.0	26	105	116	104.0	25	102	99.0	121.0	45.0	90.0	<b>P1F-4PMY</b>	<b>P1F-4PMYT</b>
Ø100	25	132	25	120.0	32	129	122	118.0	30	125	112.0	128.0	57.0	92.0	<b>P1F-4QMY</b>	<b>P1F-4QMYT</b>
Ø125	25	160	25	145.0	33	154	157	133.0	33	155	134.0	156.0	56.0	122.0	<b>P1F-4RMY</b>	<b>P1F-4RMYT</b>



### Swivel Rod Eye - AP6

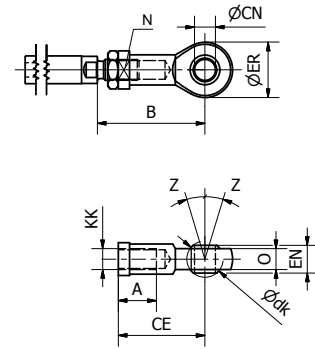


Swivel rod eye for articulated mounting of the cylinder. Swivel rod eye can be combined with clevis bracket AB6.

**Materials:**

Swivel rod eye: Zinc-plated steel  
Swivel bearing according to DIN 648K: hardened steel

Swivel rod eye: Stainless steel  
Swivel bearing according to DIN 648K: Hardened steel



**According to ISO 8139**

Cyl.-bore	A	B <sub>min</sub>	B <sub>max</sub>	CE	CN	EN	ER	KK	LE dk	N	O	Z	Weight	Order Code	
														Galvanised steel	Stainless steel
Ø32	15	48.0	55	43	10	14	29	M10x1.25	19.0	17	10.5	13°	0.07	<b>P1C-4KRS</b>	<b>P1S-4JRT</b>
Ø40	18	56.0	62	50	12	16	33	M12x1.25	22.2	19	12.0	13°	0.11	<b>P1C-4LRS</b>	<b>P1S-4LRT</b>
Ø50	24	72.0	80	64	16	21	43	M16x1.5	28.5	22	15.0	15°	0.21	<b>P1C-4MRS</b>	<b>P1S-4MRT</b>
Ø63	24	72.0	80	64	16	21	43	M16x1.5	28.5	22	15.0	15°	0.21	<b>P1C-4MRS</b>	<b>P1S-4MRT</b>
Ø80	30	87.0	97	77	20	25	51	M20x1.5	34.9	30	18.0	15°	0.38	<b>P1C-4PRS</b>	<b>P1S-4PRT</b>
Ø100	30	87.0	97	77	20	25	51	M20x1.5	34.9	30	18.0	15°	0.38	<b>P1C-4PRS</b>	<b>P1S-4PRT</b>
Ø125	45	123.5	137	110	30	37	70	M27x2	50.8	41	25.0	15°	1.15	<b>P1C-4RRS</b>	<b>P1S-4RRT</b>

### Clevis - AP2

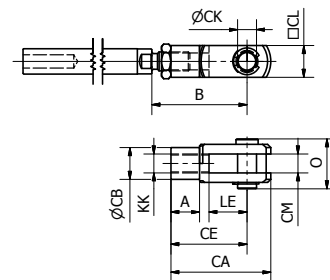


Clevis for articulated mounting of the cylinder.

**Materials:**

Clevis, clip: Zinc-plated steel  
Pin: Hardened steel

Clevis, clip: Stainless steel  
Pin: Stainless steel



**According to ISO 15552**

Cyl.-bore	A	B <sub>min</sub>	B <sub>max</sub>	CA	CB	CE	CK	CL	CM	KK	LE	O	Weight	Order code	
														Galvanised steel	Stainless steel
Ø32	15	45	52	52	18	40	10	20	10	M10x1.25	20	25	0.09	<b>P1C-4KRC</b>	<b>P1S-4JRD</b>
Ø40	18	54	60	62	20	48	12	24	12	M12x1.25	24	31	0.15	<b>P1C-4LRC</b>	<b>P1S-4LRD</b>
Ø50	24	72	80	83	26	64	16	32	16	M16x1.5	32	40	0.34	<b>P1C-4MRC</b>	<b>P1S-4MRD</b>
Ø63	24	72	80	83	26	64	16	32	16	M16x1.5	32	40	0.34	<b>P1C-4MRC</b>	<b>P1S-4MRD</b>
Ø80	30	90	100	105	34	80	20	40	20	M20x1.5	40	50	0.67	<b>P1C-4PRC</b>	<b>P1S-4PRD</b>
Ø100	30	90	100	105	34	80	20	40	20	M20x1.5	40	50	0.67	<b>P1C-4PRC</b>	<b>P1S-4PRD</b>
Ø125	40	123.5	137	148	48	110	30	55	30	M27x2.0	54	65	1.80	<b>P1C-4RRC</b>	<b>P1S-4RRD</b>



**Flexo Coupling - PM5**

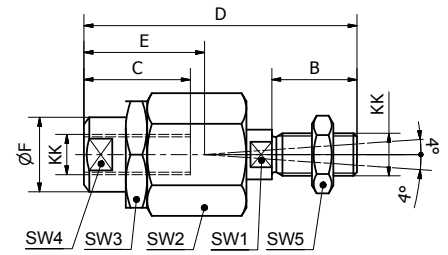


Flexo coupling for articulated mounting of piston rod. Flexo fitting is intended to take up axial angle errors within a range of  $\pm 4^\circ$ .

**Materials:**

Flexo coupling, nut: Zinc-plated steel

Supplied complete with galvanized adjustment nut.



Cyl. bore	KK	B	C	D	E	ØF	SW1	SW2	SW3	SW4	SW5	Weight	Order code
[mm]		[mm]	[mm]	[mm]	[mm]	[mm]	[mm]	[mm]	[mm]	[mm]	[mm]	[kg]	
Ø32	M10x1.25	20	23	70	31	21	12	30	30	19	17	0.23	<b>P1C-4KRF</b>
Ø40	M12x1.25	24	30	77	31	21	12	30	30	19	19	0.23	<b>P1C-4LRF</b>
Ø50	M16x1.5	32	32	108	45	33.5	19	41	41	30	24	0.65	<b>P1C-4MRF</b>
Ø63	M16x1.5	32	32	108	45	33.5	19	41	41	30	24	0.65	<b>P1C-4MRF</b>
Ø80	M20x1.5	40	42	122	56	33.5	19	41	41	30	30	0.71	<b>P1C-4PRF</b>
Ø100	M20x1.5	40	42	122	56	33.5	19	41	41	30	30	0.71	<b>P1C-4PRF</b>
Ø125	M27x2	54	48	147	51	39	24	55	55	32	41	1.60	<b>P1C-4RRF</b>

**Piston Rod Nuts - MR9**

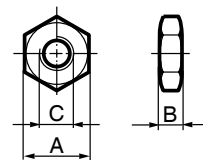
All P1F cylinders are delivered with a zinc plated steel piston rod nut unless specified below.



**Material:** Zinc-plated steel



**Material:** Stainless steel A2



**According to DIN 439 B**

Cyl.-bore	A	B	C	Weight	Order code	
					Zinc plated steel	Stainless steel
[mm]	[mm]	[mm]	[mm]	[kg]		
Ø32	17	5.0	M10 x 1.25	0.007	<b>P14-4KRPZ</b>	<b>P14-4KRPS</b>
Ø40	19	6.0	M12 x 1.25	0.010	<b>P14-4LRPZ</b>	<b>P14-4LRPS</b>
Ø50	24	8.0	M16 x 1.5	0.021	<b>P14-4MRPZ</b>	<b>P14-4MRPS</b>
Ø63	24	8.0	M16 x 1.5	0.021	<b>P14-4MRPZ</b>	<b>P14-4MRPS</b>
Ø80	30	10.0	M20 x 1.5	0.040	<b>P14-4PRPZ</b>	<b>P14-4PRPS</b>
Ø100	30	10.0	M20 x 1.5	0.040	<b>P14-4PRPZ</b>	<b>P14-4PRPS</b>
Ø125	41	13.5	M27 x 2.0	0.100	<b>P14-4RRPZ</b>	<b>P14-4RRPS</b>

\*Weight per item

**ARA**<sup>®</sup>  
**PNEUMATIK**

ul. Wyścigowa 38, 53-012 Wrocław  
 tel. 71 364 72 82, ara@arapneumatik.pl  
 www.arapneumatik.pl

