

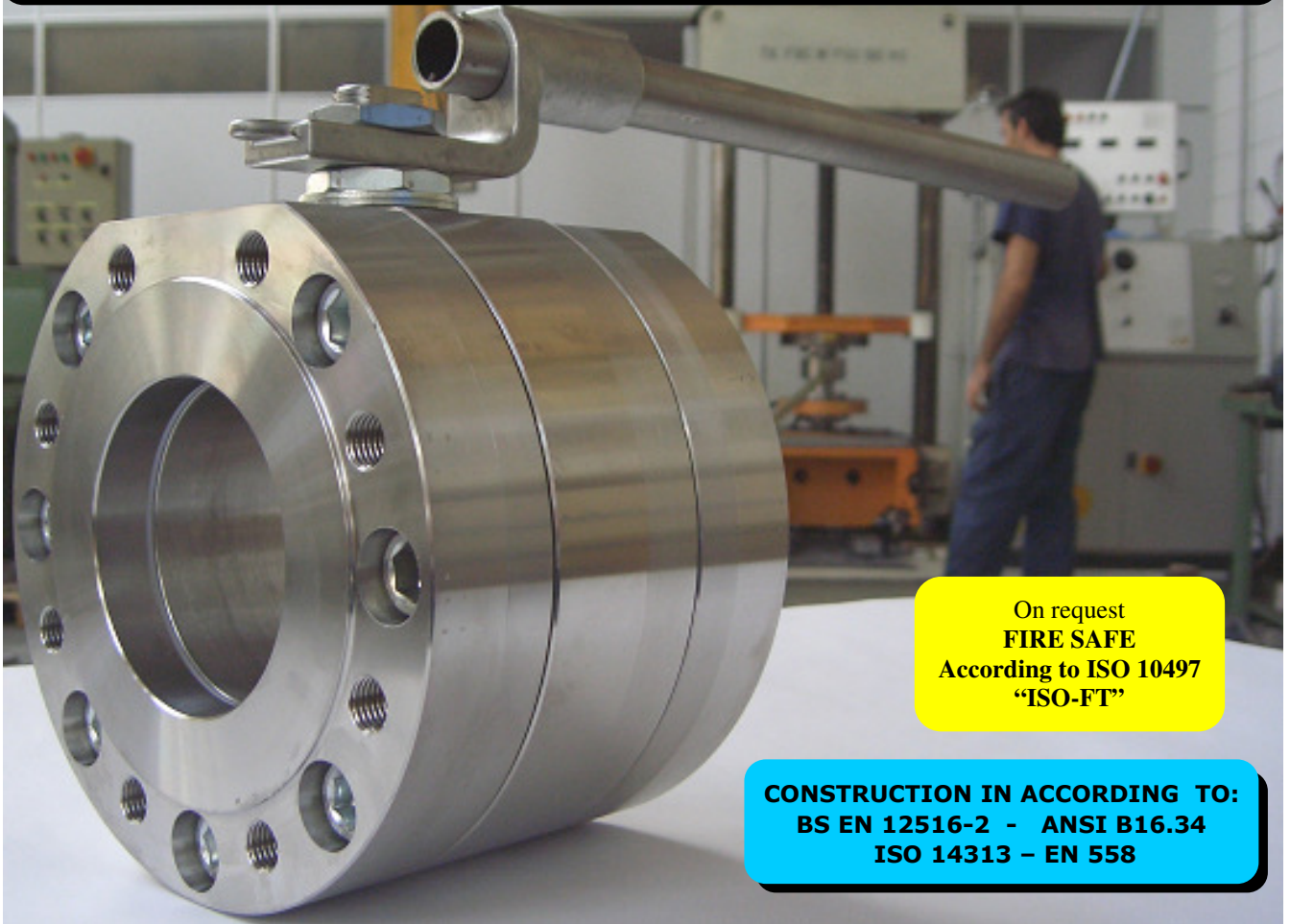
ISO 9001:2008  
PED DIR. 97/23/EC  
ATEX DIR. 94/9/EC  
AD-MERKBLATT HP0  
EN ISO 3834-3  
FIRE SAFE EXECUTION  
FIRE SAFE ISO 10497  
ISO 15848  
ANTISTATIC DEVICE  
[WWW.ADLERSPA.COM](http://WWW.ADLERSPA.COM)

TYPE  
**FA3**  
PN 10 ÷ 40  
ANSI 150

**BALL VALVES**  
**"WAFER TYPE" FULL BORE**  
**ROBINETS A BOULE**  
**"WAFER" PASSAGE INTEGRAL 3 PIECES**  
**FLANSCHKUGELHÄHNE IN "KOMPAKTBAUWEISE"**  
**VOLLER DURCHGANG**

ISO nbr° LRC 0160281 QMS issued by L.R.Q.A.  
ATEX nbr° 40.2003.4392 issued by B.V.

PED nbr° COV 0212112/01 issued by L.R.V.  
ISO 15848 nbr° I-148466/1-/2 issued by TÜV



On request  
**FIRE SAFE**  
According to ISO 10497  
"ISO-FT"

**CONSTRUCTION IN ACCORDING TO:**  
BS EN 12516-2 - ANSI B16.34  
ISO 14313 - EN 558

PRZEDSTAWICIEL W POLSCE:

**ARA**  
PNEUMATIK

53-012 Wrocław tel. 71 364 72 85  
ul. Wyścigowa 38 fax 71 364 72 83

[www.arapneumatik.pl](http://www.arapneumatik.pl)



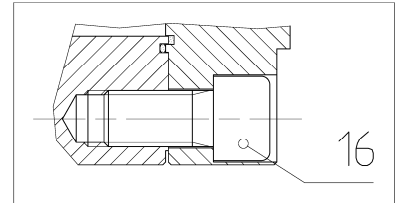
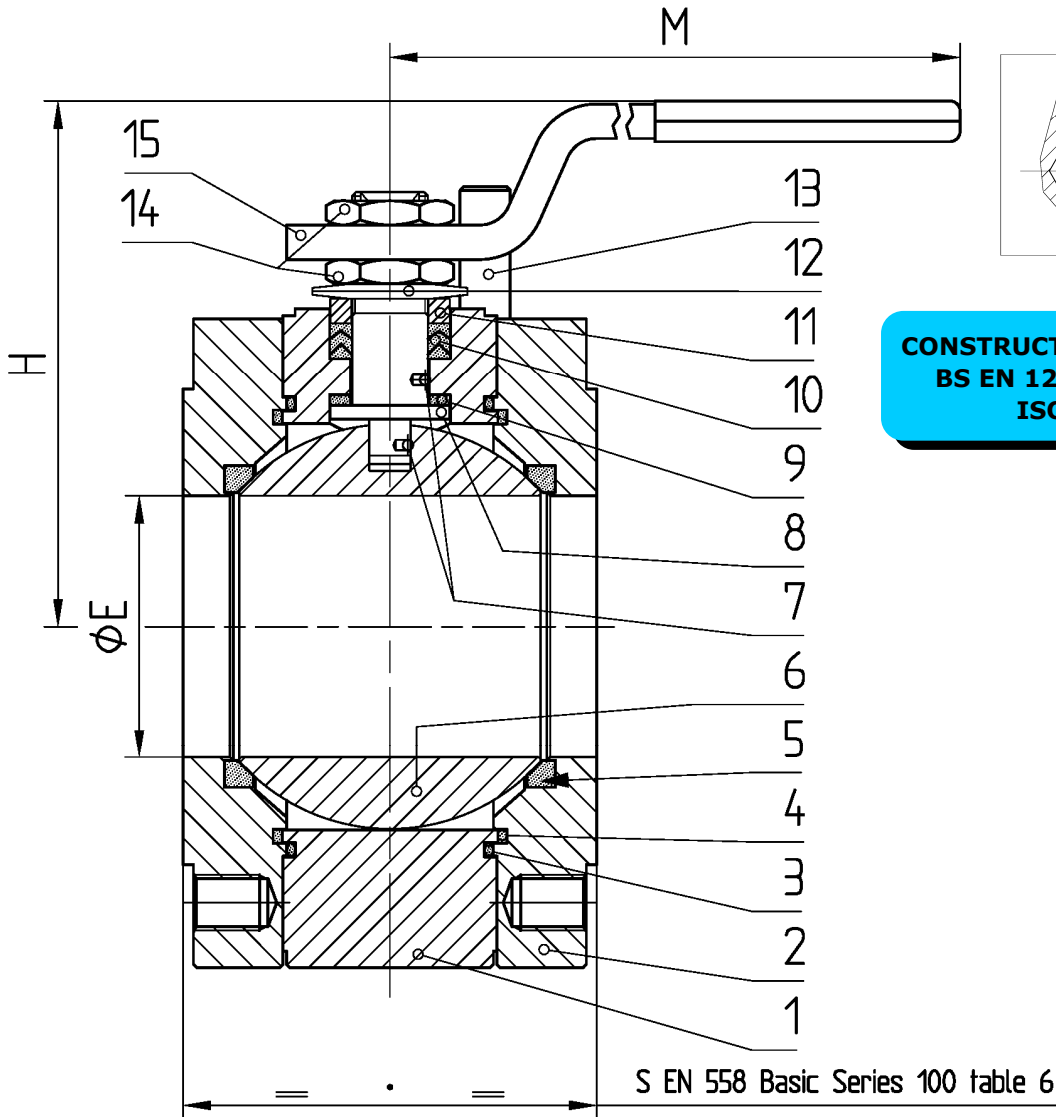


ISO 9001:2008 by L.R.  
 PED DIR. 97/23/EC by L.R.  
 ATEX DIR. 94/9/EC by B.V.  
 AD-MERKBLATT HPO by TÜV  
 EN ISO 3834-3 by TÜV  
 FIRE SAFE EXECUTION by L.R.  
 FIRE SAFE ISO 10497 by L.R.  
 ISO 15848 by TÜV  
 ANTISTATIC DEVICE by L.R.

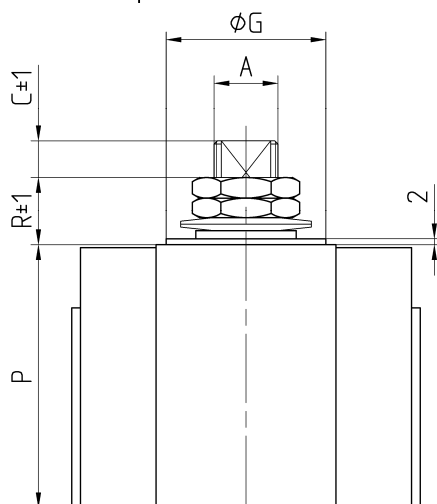
TYPE  
**FA3**

PN 10 ÷ 40  
 ANSI 150

VALVOLA A SFERA "CORPO PIATTO" PASSAGGIO TOTALE  
 BALL VALVES "WAFER TYPE" FULL BORE  
 ROBINETS A BOULE "WAFER" PASSAGE INTEGRAL 3 PIECES  
 FLANSCHKUGELHÄHNE IN "KOMPAKTBAUWEISE" VOLLER DURCHGANG

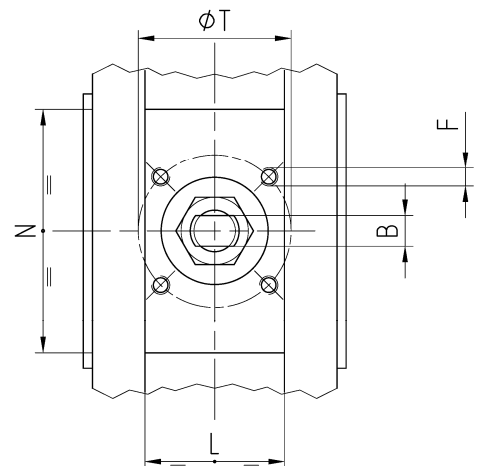


CONSTRUCTION IN ACCORDING TO:  
 BS EN 12516-2 - ANSI B16.34  
 ISO 14313 - EN 558



- ACCOPPIAMENTO VALVOLA ATTUATORE
- CONNECTION VALVE ACTUATOR
- ACCOUPLEMENT ROBINET-ACTIONNEUR
- ZUSAMMENBAU KUGELHAHN ANTRIEB

**ISO-5211**



N.	DESCRIZIONE DESCRIPTION BESCHREIBUNG	MATERIALI MATERIALS MATERIAUX WERKSTOFFE
1	CORPO BODY CORPS KÖRPER	ASTM A 182 F304 EN 10088-3 1.4301 ASTM A 182 F316 EN 10088-3 1.4401
2	LATERALE END LATERAL GEGENGEHÄUSE	ASTM A 182 F304 EN 10088-3 1.4301 ASTM A 182 F316 EN 10088-3 1.4401
3*	O-RING	FKM - (VITON)
4*	ANELLO SEAL ANNEAU DICHTUNGSRING	P.T.F.E.
5*	SEDE SEAT SIEGE SITZRING	P.T.F.E. / R.P.T.F.E. (OPTIONAL)
6	SFERA BALL BOULE KUGEL	ASTM A182 F304/304L ASTM A351 CF8/CF3 ASTM A182 F316/316L ASTM A351 CF8M/CF3M
7	DISPOSITIVO ANTISTATICO ANTISTATIC DEVICE CONTACT ANTISTATIQUE ANTISTATIK VORRICHTUNG	ASTM A479 S31600
8	STELO STEM TIGE SPINDEL	ASTM A182 F304-A479 S30400 ASTM A182 F316-A479 S31600

N.	DESCRIZIONE DESCRIPTION BESCHREIBUNG	MATERIALI MATERIALS MATERIAUX WERKSTOFFE
9*	BUSSOLA STEM SEAL JOINT TIGE UNTERE SPINDELABDICHTUNG	P.T.F.E.
10*	PACCO A "V" CHEVRON RINGS JOINT A "V" 3 FACHE DACHMANSCHETTE	P.T.F.E. / GRAFITE P.T.F.E. / GRAPHITE P.T.F.E. / GRAPHITE P.T.F.E. / GRAPHIT
11	PREMIBUSSOLA PRESSING BUSH PRESSE RONDELLE STOPFBUCHSDRUCKRING	ASTM A479 S31600
12	MOLLE A TAZZA SPRING WASHERS RONDELLES BELLEVILLE TELLERFEDERN	C72/50Cr V4 ZINCATO - GALVANIZED ZINGUE - VERZINKT
13	VITE DI FERMO E FERMO PIN AND STOP PIN PLONT ET PLOT D'ARRET ANSCHLAGBOLZEN	UNI 3740 - 8.8 ZINCATO - GALVANIZED ZINGUE - VERZINKT
14	DADO - CONTRODADO NUT - LOCK NUT ECROU - CONTRE-ECROU MUTTER - KONTERMUTTER	UNI 3740 - 6S ZINCATO - GALVANIZED ZINGUE - VERZINKT
15	LEVA WRENCH LEVIER HANDHEBEL	UNI 5946 Fe 37 ZINCATO - GALVANIZED ZINGUE - VERZINKT
16	VITE SCREW VIS SCHRAUBE	UNI 3740-8.8 ZINCATO-GALVANIZED- ZINGUE-VERZINKT

\* RICAMBI CONSIGLIATI - RECOMMENDED SPARE PARTS - PIECES DE RECHANGE CONSEILLEES - ERSATZTEIL EMPFEHLUNG

## DIMENSIONI - DIMENSION - DIMENSIONS - ABMESSUNGEN

DN	10	15	20	25	32	40	50	65	80	100	125	150	200	250	300
A									22	30					
B									14	18					
C									12	17					
E									76	101					
F									M8	M8					
ISO									F07	F07					
G									55	55					
H									152	174					
L									88	105					
M									370	470					
N									85	94					
P									90,5	99,5					
R									24	27					
S									120	155					
T									70	70					
Kg									23,5	35					

- DATI E CARATTERISTICHE SOGGETTI A VARIAZIONI SENZA PREAVVISO
- SPECIFICATIONS SUBJECT TO MODIFICATION WITHOUT PRIOR NOTICE
- TOUS DROITS DE MODIFICATION RESERVES
- KONSTRUKTIONSÄNDERUNGEN VORBEHALTEN

PN 10 ÷ 40 ANSI 150

PN 10 ÷ 16



ADLER SpA - VALVOLE A SFERA  
20010 S. STEFANO TICINO (MI) ITALY V.le BORLETTI, 14 Tel. +39/02974842.11 FAX +39/0297271698  
E-mail: [adler@adlerspa.com](mailto:adler@adlerspa.com) <http://www.adlerspa.com>



ISO 9001:2008 by L.R.Q.A. FIRE SAFE EXECUTION by L.R.  
 PED DIR. 97/23/EC by L.R.V. ISO 15848 by TÜV  
 ATEX DIR. 94/9/EC by B.V. AD-MERKBLATT HP0 by TÜV  
 ANTISTATIC DEVICE by L.R. EN ISO 3834-3 by TÜV

TYPE  
**FA3**  
 PN 10 ÷ 40  
 ANSI 150

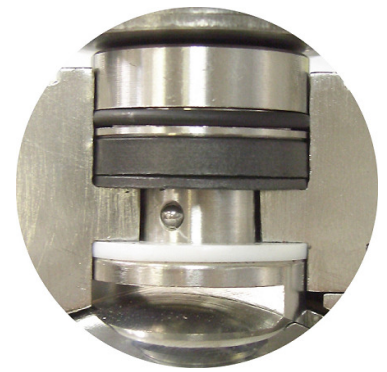
VALVOLA A SFERA "CORPO PIATTO" PASSAGGIO TOTALE  
 BALL VALVES "WAFER TYPE" FULL BORE

ROBINETS A BOULE "WAFER" PASSAGE INTEGRAL  
 FLANSCHKUGELHÄHNE IN "KOMPAKTBAUWEISE" VOLLER DURCHGANG

▪ ESECUZIONI ▪ EXECUTIONS ▪ EXECUTIONS ▪ AUSFÜHRUNGEN



EXECUTION 4 - 12



EXECUTION 6 - 16

**S** STANDARD

**O** OPTIONAL

**1** **S**

-MONTAGGIO VITI - SCREW ASSEMBLING  
 -MONTAGE VIS - EINBAU MIT SCHRAUBEN

**2** **O**

-MONTAGGIO DI FONDO  
 -END TANK ASSEMBLING  
 -MONTAGE FOND DE CUVE  
 -EINBAU ALS BODENABLASSKUGELHAHN

**3** **O**

-MONTAGGIO BULLONI  
 -BOLTS ASSEMBLING  
 -MONTAGE BOULONS  
 EINBAU MIT ZUGBOLZEN

**4** **S**

-STELO ANTI ESPULSIONE - ANTI BLOW OUT STEM  
 -TIGE ANTIEXPULSION - AUSBLASGESICHERTE WELLE

-PACCO A "V" - CHEVRON RINGS  
 -JOINT A "V" - 3 FACHE DACHMANSCHETE  
 ANTISTATIC DEVICE ANTISTATIK VORRICHTUNG  
 BS 5146

**STOP LEVER DEVICE**

**6** **O**

**BREVETTO - PATENTED**  
 00219688

FKM (VITON)

-"O" RING STELO "O" RING ON STEM  
 -TIGE AVEC "O" RING  
 -"O" RING IM SPINDELBEREICH





**DATI TECNICI – TECHNICAL DATA  
INFORMATION TECHNIQUES - TECHNISCHE DATEN**

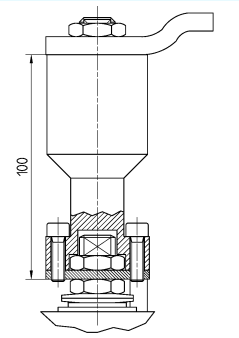
**TABLE 03 – 04 – 07 – 20**

**TYPE  
FA3  
PN 10 ÷ 40  
ANSI 150**

**VALVOLA A SFERA "CORPO PIATTO" PASSAGGIO TOTALE  
BALL VALVES "WAFER TYPE" FULL BORE**

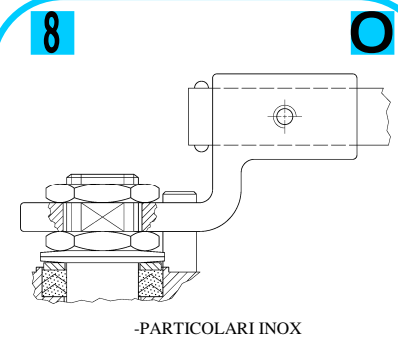
**ROBINETS A BOULE "WAFER" PASSAGE INTEGRAL  
FLANSCHKUGELHÄHNE IN "KOMPAKTBAUWEISE" VOLLER DURCHGANG**

• ESECUZIONI • EXECUTIONS • EXECUTIONS • AUSFÜHRUNGEN

**7** 

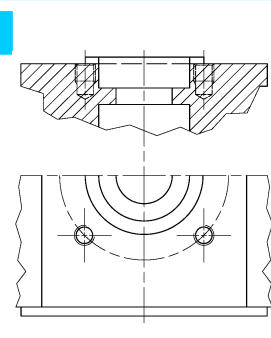
**O**

-PROLUNGA STELO -STEM EXTENSION  
-TIGE PROLONGEE -SPINDELVERLÄNGERUNG

**8** 

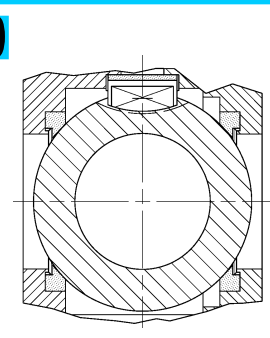
**O**

-PARTICOLARI INOX  
-STAINLESS STEEL DETAILS  
-ACCESSOIRES EN INOX  
-EDELSTHALTEILE

**9** 

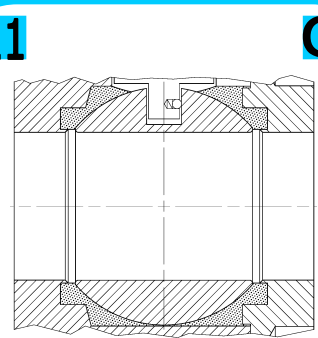
**S**

-ATTACCO "ISO" -"ISO" FASTENING  
-SYSTEM "ISO" ANSCHLUSS "ISO"

**10** 

**S**

-SFERA CONTENUTA -CONTENTS BALL  
-BOULE CONTENUE  
-NICHT RAUSRAGENDE KUGEL

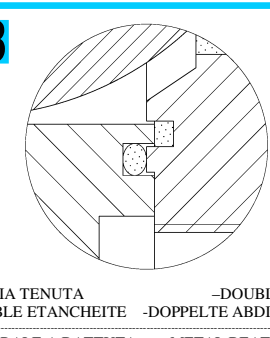
**11** 

**O**

-TENUTE INTEGRALE -POCKETLESS SEATS  
-TENUUE INTEGRALE -TOTRAUMARM  
-P.T.F.E. / R.T.F.E.

**12** **FIRE SAFE  
ISO 10497 "ISO-FT"  
(BS 6755 / API 607)** 

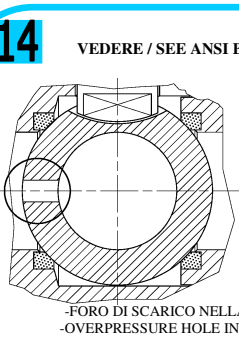
**O**

**13** 

**S**

**BREVETTO - PATENTED  
00219619**

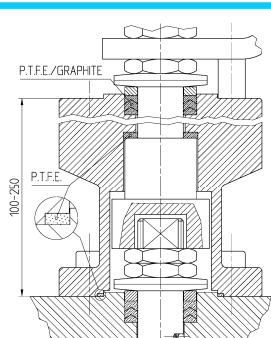
-DOPPIA TENUTA -DOUBLE SEALS  
-DOUBLE ETANCHEITE -DOPPELTE ABDICHTUNG  
-LATERALE A BATTUTA -METAL BEATING END  
-LATERAL AVEC BATTUE MECANIQUE  
-METALLISCHER ANSCHLAG DES  
GEGENGEHÄUSES

**14** **VEDERE / SEE ANSI B 16.34** 

**O**

FLUSSO  
FLOW

-FORO DI SCARICO NELLA SFERA  
-OVERPRESSURE HOLE INTO BALL  
-TROU DECOMPRESSION DANS LA BOULE  
-ENTLASTUNGSBOHRUNG IN DER KUGEL  
**VALVOLA MONO DIREZIONALE  
MONO-DIRECTIONAL VALVE**

**15** 

**O**

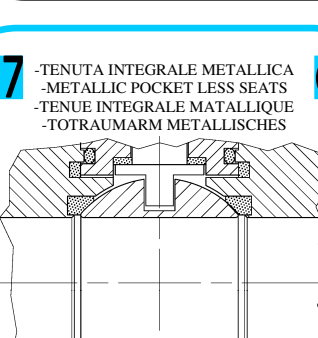
P.T.F.E./GRAPHITE  
P.T.F.E.  
100-250

-SERVIZIO CRIOGENICO -CRYOGENIC SERVICE  
-SERVICE CRYOGÉNIQUE  
-KÄLTEERZEUGENDER SERVICE

**16** 

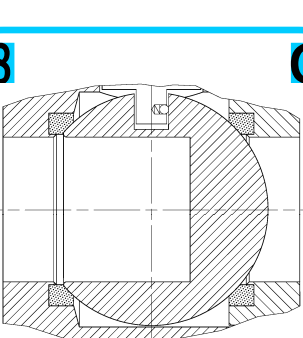
**O**

-FIRE SAFE ISO FT + "O" RING STELO  
-FIRE SAFE ISO FT + "O" RING ON STEM  
-SECURITE FEU ISO FT + TIGE AVEC "O" RING  
-FEUERSICHERE AUSFÜHRUNG ISO FT +  
"O" RING IM SPINDELBEREICH

**17** 

**O**

-TENUTA INTEGRALE METALLICA  
-METALLIC POCKET LESS SEATS  
-TENUUE INTEGRALE MATTALLIQUE  
-TOTRAUMARM METALLISCHES

**18** 

**O**

-SFERA CIECA PER CAMPIONATURA  
-BLIND BALL FOR SAMPLING  
-PRISE-ECHANTILLON  
KUGEL FÜR PROBEENTNAHME



**VITI D'ASSEMBLAGGIO PER FA3  
ASSEMBLING SCREWS FOR FA3  
VIS D'ASSEMBLAGE POUR FA3  
MONTAGESCHRAUBEN FÜR FA3**

**TABLE  
07**

N° VITI – DIMENSIONE • N° SCREW – DIMENSIONS • N° VIS- DIMENSIONS • N° SCHRAUBEN – ABMESSUNGEN

**EUROPEAN NORM**

DN PN	10-15	20	25	32	40	50	65	80	100	125	150	200
10								* 16 M16 X40	16 M16 X40			
16								16 M16 X40	16 M16 X40			
25								16 M16 X45	16 M20 X50			
40								16 M16 X45	16 M20 X50			

\* N° 8 per UNI 2223/2229

**ANSI METRIC**

(STANDARD ADLER)

Ø Rating	1/2"	3/4"	1"	1 1/4"	1 1/2"	2"	2 1/2"	3"	4"	5"	6"	8"
150								8 M16 X45	16 M16 X45			

**ANSI B1.1 UNC**

(ON REQUEST)

Ø Rating	1/2"	3/4"	1"	1 1/4"	1 1/2"	2"	2 1/2"	3"	4"	5"	6"	8"
150								8 5/8 X 1 3/4	16 5/8 X 1 3/4			



PRZEDSTAWICIEL W POLSCE:

**ARA**  
PNEUMATIK

53-012 Wrocław tel. 71 364 72 85  
ul. Wyciągowa 38 fax 71 364 72 83

[www.arapneumatik.pl](http://www.arapneumatik.pl)



ADLER SpA – VALVOLE A SFERA  
20010 S. STEFANO TICINO (MI) ITALY V.le BORLETTI, 14 Tel. +39/02974842.11 FAX +39/0297271698  
E-mail: [adler@adlerspa.com](mailto:adler@adlerspa.com) <http://www.adlerspa.com>