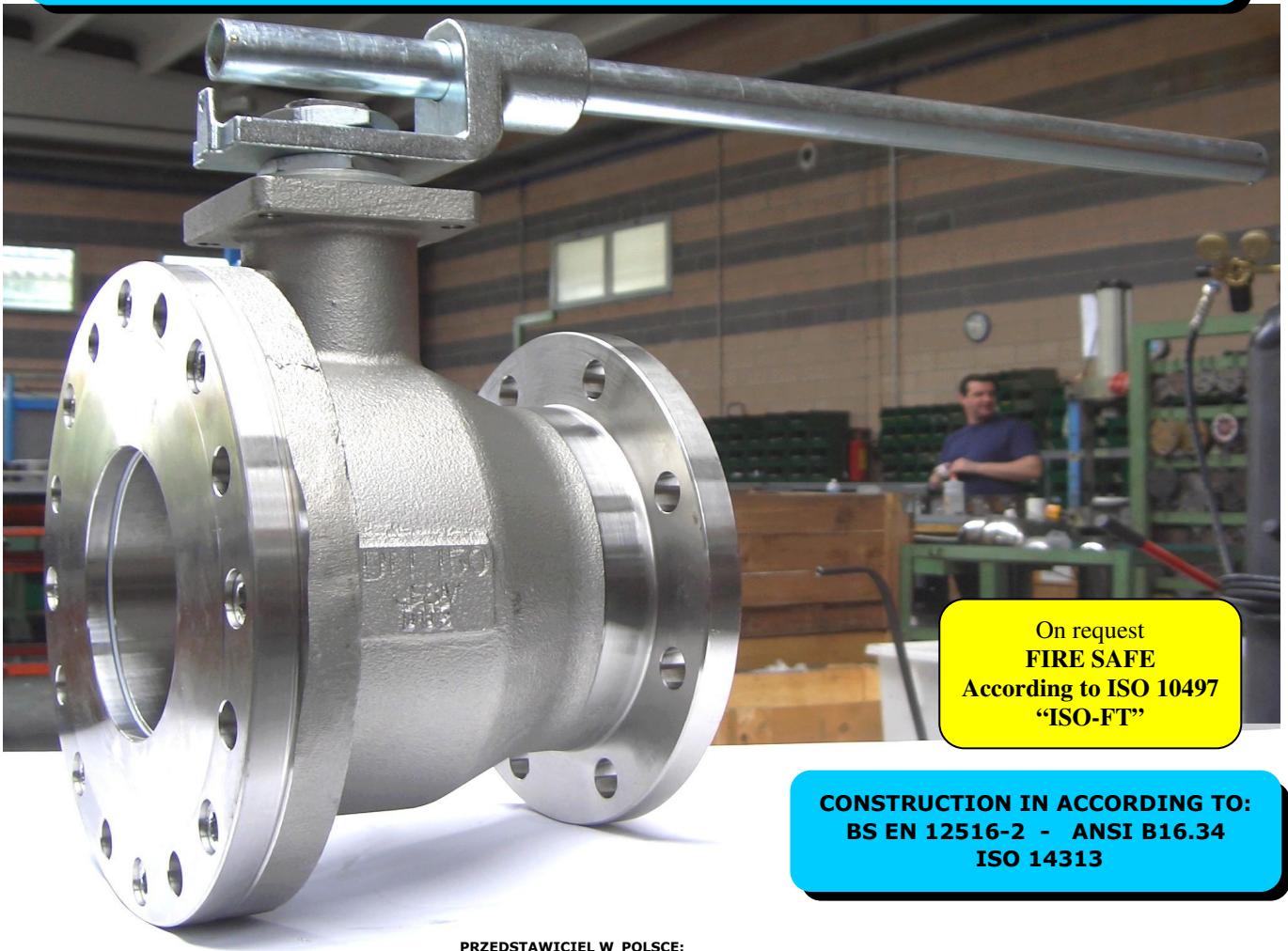


ISO 9001:2008 by L.R.
PED DIR. 97/23/EC by L.R.
ATEX DIR. 94/9/EC by B.V.
FIRE SAFE EXECUTION by L.R.
ISO 15848 by TÜV
ANTISTATIC DEVICE by L.R.
FIRE SAFE TESTED ISO 10497 by L.R.
WWW.ADLERSPA.COM

TYPE
FB8
PN 10 ÷ 16
ANSI 150

**BALL VALVES "WAFER TYPE" FULL BORE
END TANK ASSEMBLING
ROBINETS A BOULE "WAFER" PASSAGE INTEGRAL
MONTAGE FOND DE CUVE
FLANSCHKUGELHÄHNE IN "KOMPAKTBAUWEISE"
VOLLER DURCHGANG EINBAU ALS
BODENABLASSKUGELHAHN**

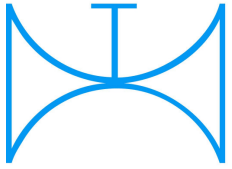
ISO nbr° LRC 0160281 QMS issued by L.R.Q.A. PED nbr° COV 0212112/01 issued by L.R.V.
ATEX nbr° 40.2003.4392 issued by B.V. ISO 15848 nbr° I-148466/1-/2 issued by TÜV



On request
FIRE SAFE
According to ISO 10497
"ISO-FT"

**CONSTRUCTION IN ACCORDING TO:
BS EN 12516-2 - ANSI B16.34
ISO 14313**





ISO 9001:2008 by L.R.
 PED DIR. 97/23/EC by L.R.
 ATEX DIR. 94/9/EC by B.V.
 FIRE SAFE EXECUTION by L.R.
 ISO 15848 by TÜV
 ANTISTATIC DEVICE by L.R.
 FIRE SAFE TESTED ISO 10497 by L.R.

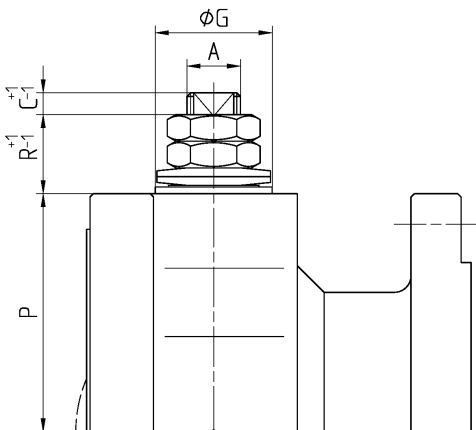
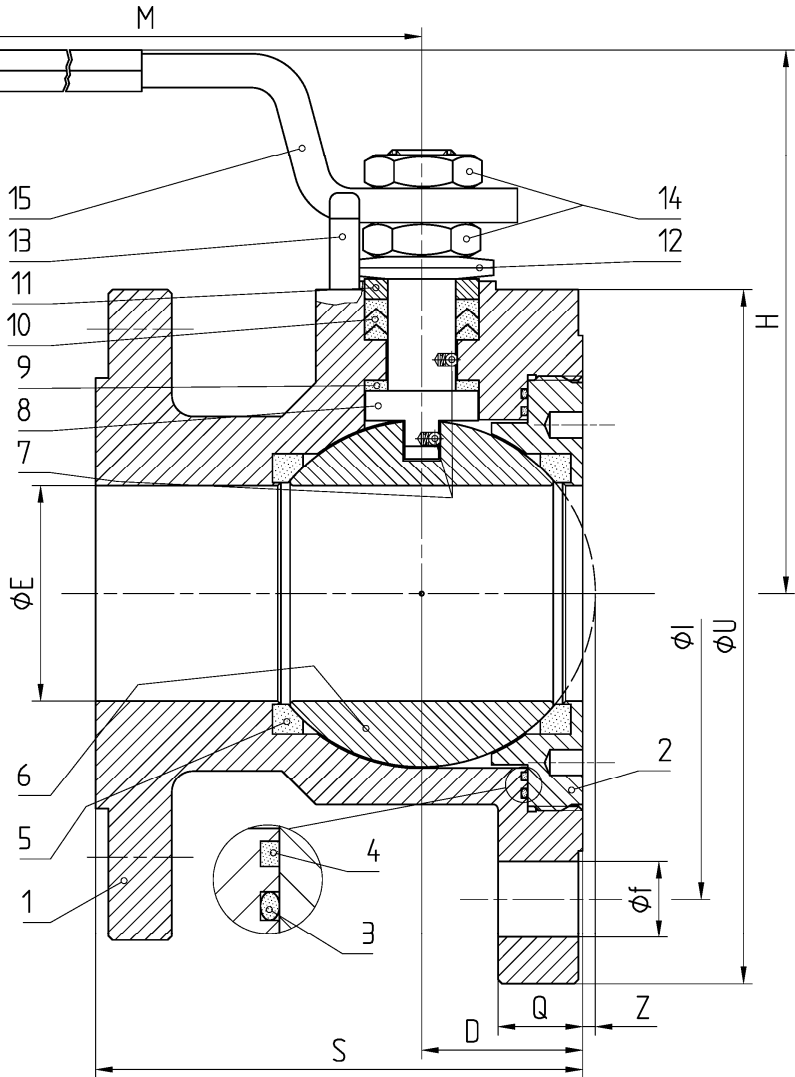
TYPE
FB8
 PN 10 ÷ 16
 ANSI 150

VALVOLA A SFERA "CORPO PIATTO" PASSAGGIO TOTALE, MONTAGGIO DI FONDO
 BALL VALVES "WAFFER TYPE" FULL BORE, END TANK ASSEMBLING
 ROBINETS A BOULE "WAFER" PASSAGE INTEGRAL, MONTAGE FOND DE CUVE
 FLANSCHKUGELHÄHNE IN "KOMPAKTBAUWEISE" VOLLER DURCHGANG,
 EINBAU ALS BODENABLASSKUGELHAHN

FROM BAR STOCK

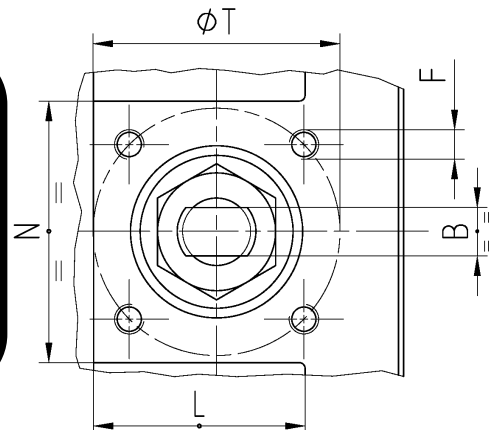
FLANGIA LATO SERBATOIO
 MAGGIORATA
 TANK SIDE FLANGE INCREASED

CONSTRUCTION IN
 ACCORDING TO:
 BS EN 12516-2
 ANSI B16.34
 ISO 14313



- ACCOPPIAMENTO VALVOLA ATTUATORE
- CONNECTION VALVE ACTUATOR
- ACCOUPLEMENT ROBINET-ACTIONNEUR
- ZUSAMMENBAU KUGELHAHN ANTRIEB

ISO-5211



N.	DESCRIZIONE DESCRIPTION DESCRIPTION BESCHREIBUNG	MATERIALI MATERIALS MATERIAUX WERKSTOFFE
1	CORPO BODY CORPS KÖRPER	ASTM A 182 F316- A479 S31600
2	GHIERA INSERT EMBOUT GEWINDEDRUCKRING	ASTM A 182 F316- A479 S31600
3*	O-RING	FKM - (VITON)
4*	ANELLO SEAL ANNEAU DICHTUNGSRING	P.T.F.E.
5*	SEDE SEAT SIEGE SITZRING	P.T.F.E. / R.P.T.F.E. (OPTIONAL)
6	SFERA BALL BOULE KUGEL	ASTM A182 F316-A479 S31600 ASTM A351 CF8M
7	DISPOSITIVO ANTISTATICO ANTISTATIC DEVICE CONTACT ANTISTATIQUE ANTISTATIK VORRICHTUNG	ASTM A479 S31600
8	STELO STEM TIGE SPINDEL	ASTM A182 F316-A479 S31600

N.	DESCRIZIONE DESCRIPTION DESCRIPTION BESCHREIBUNG	MATERIALI MATERIALS MATERIAUX WERKSTOFFE
9*	BUSSOLA STEM SEAL JOINT TIGE UNTERE SPINDELABDICHTUNG	P.T.F.E.
10*	PACCO A "V" CHEVRON RINGS JOINT A "V" 3 FACHE DACHMANSCHETTE	P.T.F.E. / GRAFITE P.T.F.E. / GRAPHITE P.T.F.E. / GRAPHITE P.T.F.E. / GRAPHIT
11	PREMIBUSSOLA PRESSING BUSH PRESSE RONDELLE STOPFBUCHSDRUCKRING	ASTM A479 S31600
12	MOLLE A TAZZA SPRING WASHERS RONDELLES BELLEVILLE TELLERFEDERN	C72/50Cr V ₄ ZINCATO - GALVANIZED ZINGUE - VERZINKT
13	VITE DI FERMO E FERMO PIN AND STOP PIN PLOT ET PLOT D'ARRET ANSCHLAGBOLZEN	UNI 3740 - 8.8 ZINCATO - GALVANIZED ZINGUE - VERZINKT
14	DADO - CONTRODADO NUT - LOCK NUT ECROU - CONTRE-ECROU MUTTER - KONTERMUTTER	UNI 3740 - 6S ZINCATO - GALVANIZED ZINGUE - VERZINKT
15	LEVA WRENCH LEVIER HANDHEBEL	UNI 5946 Fe 37 ZINCATO - GALVANIZED ZINGUE - VERZINKT
16		

* RICAMBI CONSIGLIATI - RECOMMENDED SPARE PARTS - PIECES DE RECHANGE CONSEILLEES - ERSATZTEIL EMPFEHLUNG

DIMENSIONI - DIMENSION - DIMENSIONS - ABMESSUNGEN

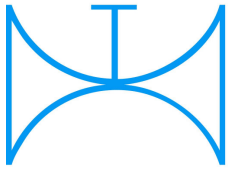
DN	10	15	20	25	32	40	50	65	80	100	125	150	200	250	300
AxB						16x10	16x10	22x14							
C						13	13	9							
D						30	38	45							
E						38	51	64							
F						M6	M6	M6							
f						18	18	18							
ISO						F05	F05	F05							
G						35	35	35							
H						112	122	180							
I						125	145	160							
LxN						48	43x53	69							
M						280	280	280							
P						62	72	125							
Q						19	20	18,5							
R						16	16	20							
S						95	115	130							
T						50	50	50							
U						164,5	184,5	199,5							
Z						1	3	5,5							
~Kg						8,5	10,5								

- DATI E CARATTERISTICHE SOGGETTI A VARIAZIONI SENZA PREAVVISO
- SPECIFICATIONS SUBJECT TO MODIFICATION WITHOUT PRIOR NOTICE
- TOUS DROITS DE MODIFICATION RESERVES
- KONSTRUKTIONÄNDERUNGEN VORBEHALTEN

OPTION



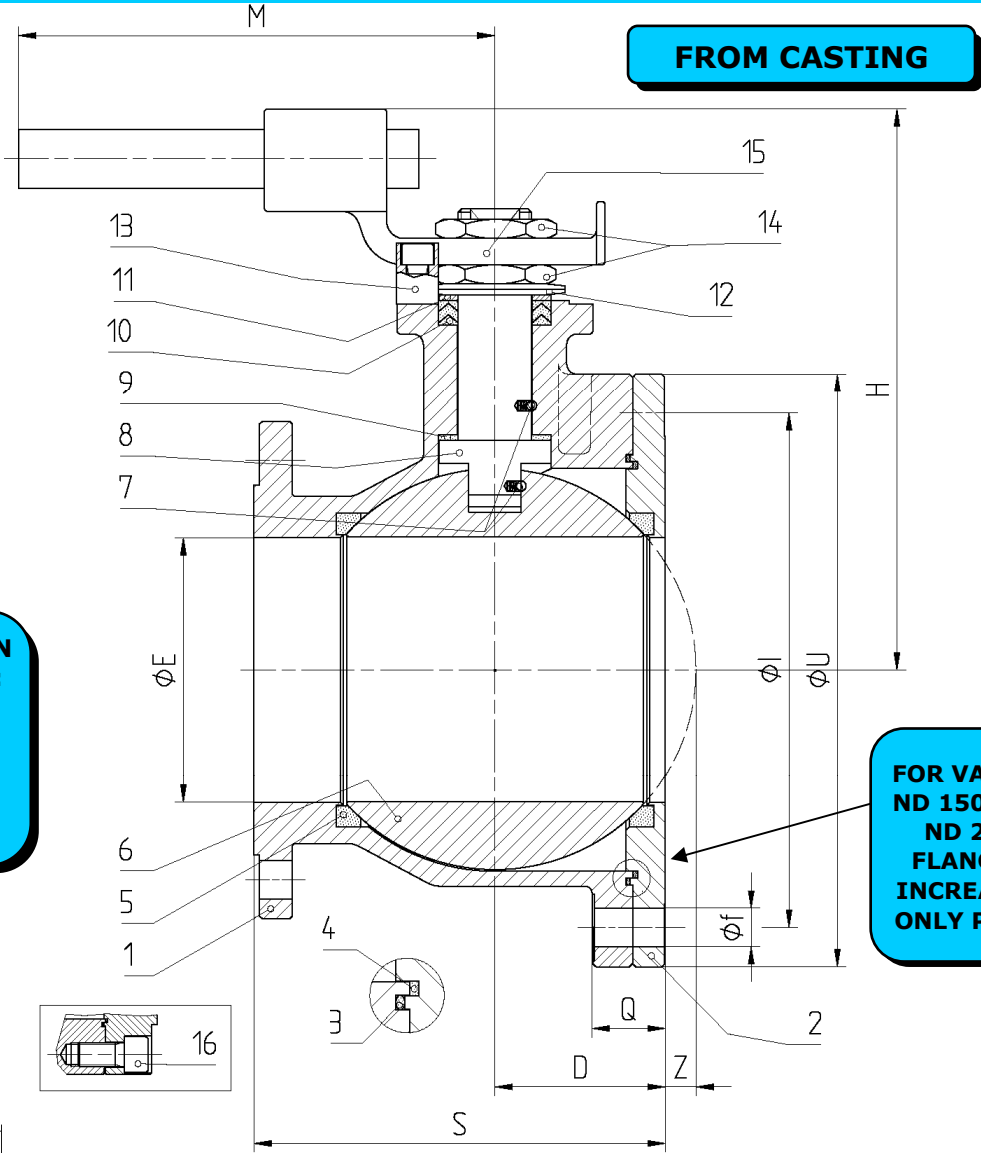
ADLER SpA - VALVOLE A SFERA
20010 S. STEFANO TICINO (MI) ITALY V.le BORLETTI, 14 Tel. +39/02974842.11 FAX +39/0297271698
E-mail: adler@adlerspa.com <http://www.adlerspa.com>



ISO 9001:2008 by L.R.
 PED DIR. 97/23/EC by L.R.
 ATEX DIR. 94/9/EC by B.V.
 FIRE SAFE EXECUTION by L.R.
 ISO 15848 by TÜV
 ANTISTATIC DEVICE by L.R.
 FIRE SAFE TESTED ISO 10497 by L.R.

TYPE
FB8
 PN 10 ÷ 16
 ANSI 150

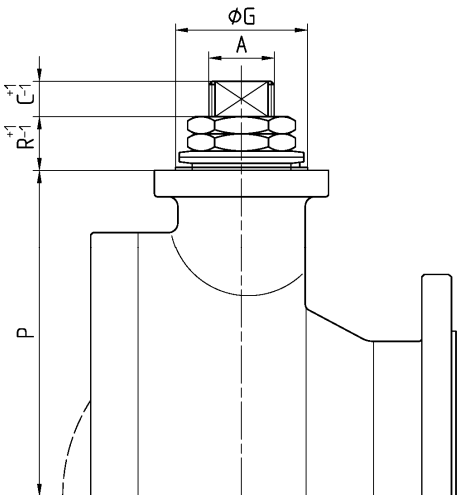
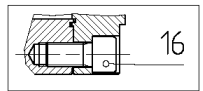
VALVOLA A SFERA "CORPO PIATTO" PASSAGGIO TOTALE, MONTAGGIO DI FONDO
 BALL VALVES "WAFER TYPE" FULL BORE, END TANK ASSEMBLING
 ROBINETS A BOULE "WAFER" PASSAGE INTEGRAL, MONTAGE FOND DE CUVE
 FLANSCHKUGELHÄHNE IN "KOMPAKTBAUWEISE" VOLLER DURCHGANG,
 EINBAU ALS BODENABLASSKUGELHAHN



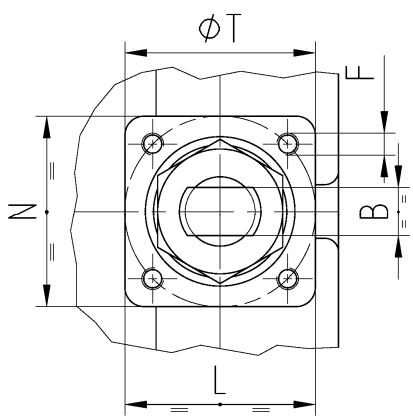
FLANGIA LATO
 SERBATOIO
 MAGGIORATA
 TANK SIDE
 FLANGE
 INCREASED

CONSTRUCTION IN
 ACCORDANCE TO:
 BS EN 12516-2
 ANSI B16.34
 ISO 14313

FOR VALVES
 ND 150 AND
 ND 200
 FLANGED
 INCREASED
 ONLY PN 10



• ACCOPIAMENTO VALVOLA
 ATTUATORE
 • CONNECTION VALVE
 ACTUATOR
 • ACCOUPLEMENT ROBINET-
 ACTIONNEUR
 • ZUSAMMENBAU KUGELHAHN
 ANTRIEB
ISO-5211



FB8/08 RIPRODUZIONE VIETATA - COPYRIGHT

N.	DESCRIZIONE DESCRIPTION BESCHREIBUNG	MATERIALI MATERIALS MATERIAUX WERKSTOFFE
1	CORPO BODY CORPS KÖRPER	ASTM A351 CF8M
2	GHIERA INSERT EMBOUT GEWINDEDRUCKRING	ASTM A351 CF8M
3*	O-RING	FKM - (VITON)
4*	ANELLO SEAL ANNEAU DICHTUNGSRING	P.T.F.E.
5*	SEDE SEAT SIEGE SITZRING	P.T.F.E. / R.P.T.F.E. (OPTIONAL)
6	SFERA BALL BOULE KUGEL	ASTM A182 F316-A479 S31600 ASTM A351 CF8M
7	DISPOSITIVO ANTISTATICO ANTISTATIC DEVICE CONTACT ANTISTATIQUE ANTISTATIK VORRICHTUNG	ASTM A479 S31600
8	STELO STEM TIGE SPINDEL	ASTM A182 F316-A479 S31600

N.	DESCRIZIONE DESCRIPTION BESCHREIBUNG	MATERIALI MATERIALS MATERIAUX WERKSTOFFE
9*	BUSSOLA STEM SEAL JOINT TIGE UNTERE SPINDELABDICHTUNG	P.T.F.E.
10*	PACCO A "V" CHEVRON RINGS JOINT A "V" 3 FACHE DACHMANSCHETTE	P.T.F.E. / GRAFITE P.T.F.E. / GRAPHITE P.T.F.E. / GRAPHITE P.T.F.E. / GRAPHIT
11	PREMIBUSSOLA PRESSING BUSH PRESSE RONDELLE STOPFBUCHSDRUCKRING	ASTM A479 S31600
12	MOLLE A TAZZA SPRING WASHERS RONDELLES BELLEVILLE TELLERFEDERN	C72/50Cr V4 ZINCATO - GALVANIZED ZINGUE - VERZINKT
13	VITE DI FERMO E FERMO PIN AND STOP PIN PLOT ET PLOT D'ARRET ANSCHLAGBOLZEN	UNI 3740 - 8.8 ZINCATO - GALVANIZED ZINGUE - VERZINKT
14	DADO - CONTRODADO NUT - LOCK NUT ECROU - CONTRE-ECROU MUTTER - KONTERMUTTER	UNI 3740 - 6S ZINCATO - GALVANIZED ZINGUE - VERZINKT
15	LEVA WRENCH LEVIER HANDHEBEL	UNI 5946 Fe 37 ZINCATO - GALVANIZED ZINGUE - VERZINKT
16	VITE SCREW VIST SCHRAUBE	UNI 3740-8.8 ZINCATO-GALVANIZED- ZINGUE-VERZINKT

* RICAMBI CONSIGLIATI - RECOMMENDED SPARE PARTS - PIECES DE RECHANGE CONSEILLEES - ERSATZTEIL EMPFEHLUNG

DIMENSIONI - DIMENSION - DIMENSIONS - ABMESSUNGEN

DN	10	15	20	25	32	40	50	65	80	100	125	150	200	250	300
AxB								22x14	22x14	30x18	30x18	42x28	48x32		
C								9	13	18	18	21	19		
D								45	52	64	75,5	98	119,5		
E								64	76	101	118	152	187		
F								M6	M8	M8	M10	M12	16		
f								18	18	18	22	22	22		
ISO								F05	F07	F07	F10	F12	F14		
G								35	55	55	70	85	100		
H								180	200	235	250	320	340		
I								160	180	210	240	295	350		
L=N								51	70	70	97	112	126		
M								280	370	470	650	750	900		
P								125	137	161	175	210	228		
Q								18,5	18,5	20,5	20,5	43,5	43		
R								20	23	26	26	34	37		
S								130	140	155	202	235	270		
T								50	70	70	102	125	140		
U								200	220	250	280	340	395		
Z								5	7	11,5	13,5	17,5	23		
~Kg															

- DATI E CARATTERISTICHE SOGGETTI A VARIAZIONI SENZA PREAVVISO
- SPECIFICATIONS SUBJECT TO MODIFICATION WITHOUT PRIOR NOTICE
- TOUS DROITS DE MODIFICATION RESERVES
- KONSTRUKTIONBÄNDERUNGEN VORBEHALTEN

On request



ADLER SpA - VALVOLE A SFERA
20010 S. STEFANO TICINO (MI) ITALY V.le BORLETTI, 14 Tel. +39/02974842.11 FAX +39/0297271698
E-mail: adler@adlerspa.com <http://www.adlerspa.com>



ISO 9001:2008 by L.R.
 PED DIR. 97/23/EC by L.R.
 ATEX DIR. 94/9/EC by B.V.
 FIRE SAFE EXECUTION by L.R.
 ISO 15848 by TÜV
 ANTISTATIC DEVICE by L.R.
 FIRE SAFE TESTED ISO 10497 by L.R.

TYPE
FB8
 PN 10 ÷ 16
 ANSI 150

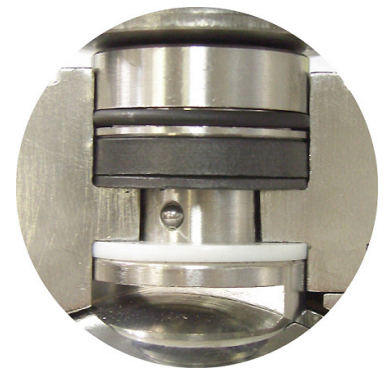
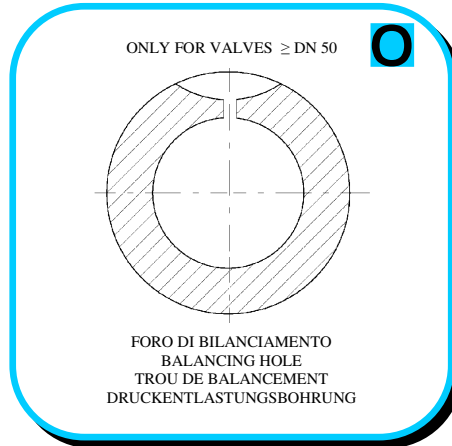
VALVOLA A SFERA "CORPO PIATTO" PASSAGGIO TOTALE
 BALL VALVES "WAFFER TYPE" FULL BORE

ROBINETS A BOULE "WAFFER" PASSAGE INTEGRAL
 FLANSCHKUGELHÄHNE IN "KOMPAKTBAUWEISE" VOLLER DURCHGANG

▪ ESECUZIONI ▪ EXECUTIONS ▪ EXECUTIONS ▪ AUSFÜHRUNGEN



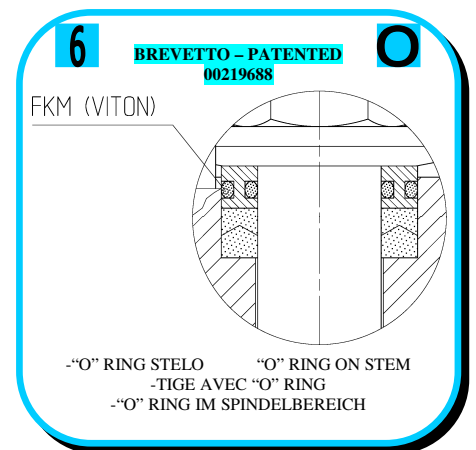
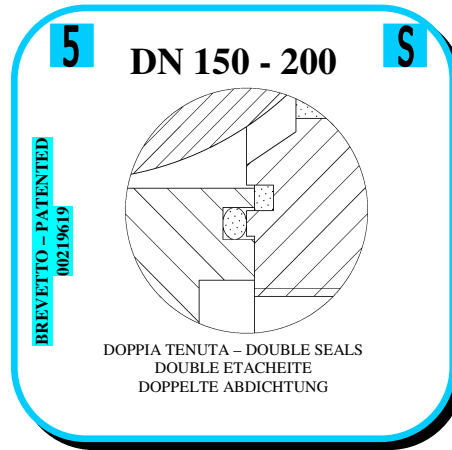
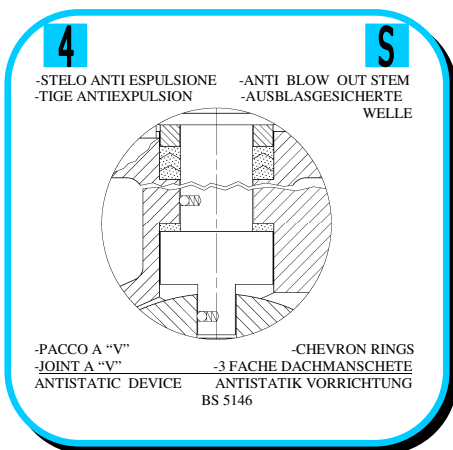
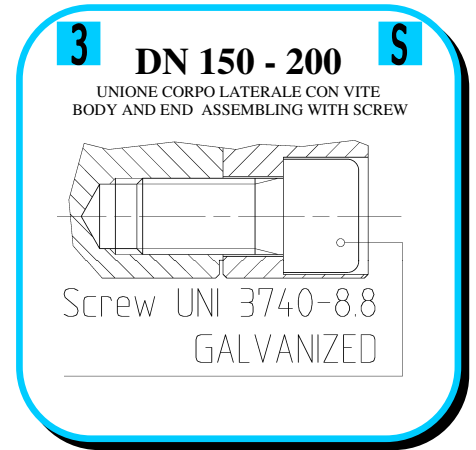
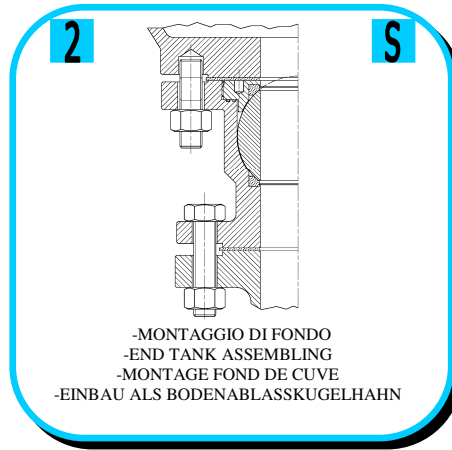
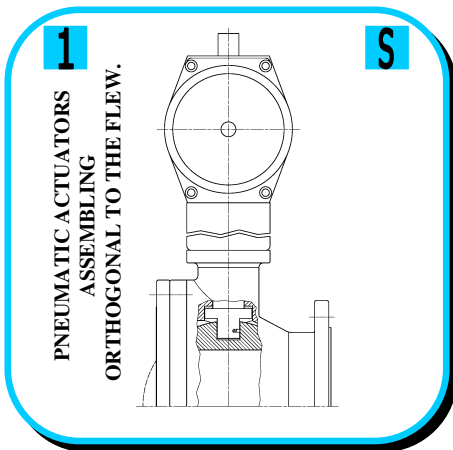
EXECUTION 4 - 12

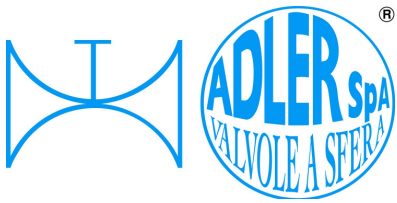


EXECUTION 6 - 16

S STANDARD

O OPTIONAL





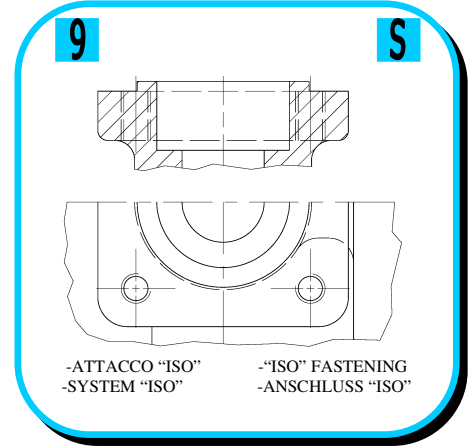
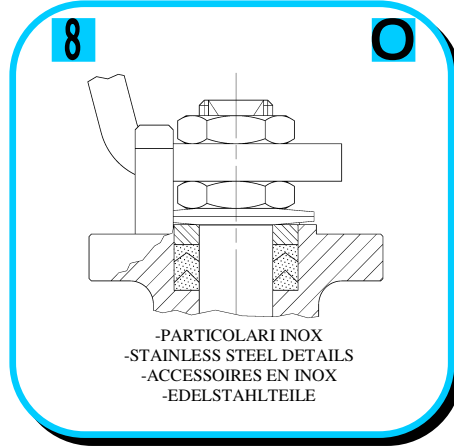
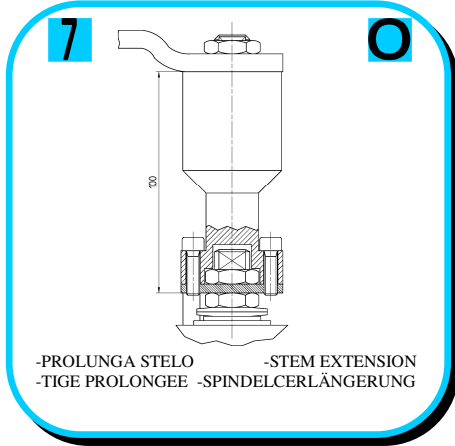
ISO 9001:2008 by L.R.
 PED DIR. 97/23/EC by L.R.
 ATEX DIR. 94/9/EC by B.V.
 FIRE SAFE EXECUTION by L.R.
 ISO 15848 by TÜV
 ANTISTATIC DEVICE by L.R.
 FIRE SAFE TESTED ISO 10497 by L.R.

TYPE
FB8
 PN 10 ÷ 16
 ANSI 150

VALVOLA A SFERA "CORPO PIATTO" PASSAGGIO TOTALE
 BALL VALVES "WAFER TYPE" FULL BORE

ROBINETS A BOULE "WAFER" PASSAGE INTEGRAL
 FLANSCHKUGELHÄHNE IN "KOMPAKTBAUWEISE" VOLLER DURCHGANG

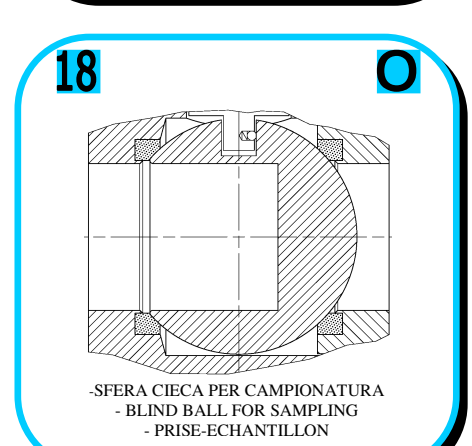
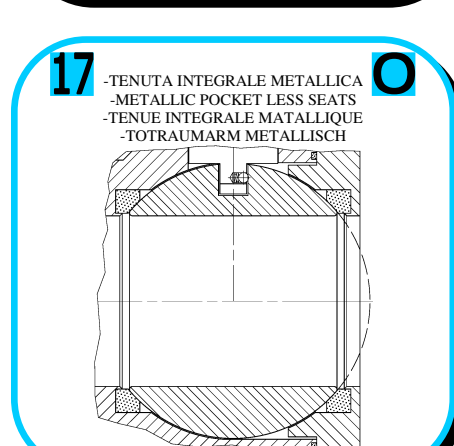
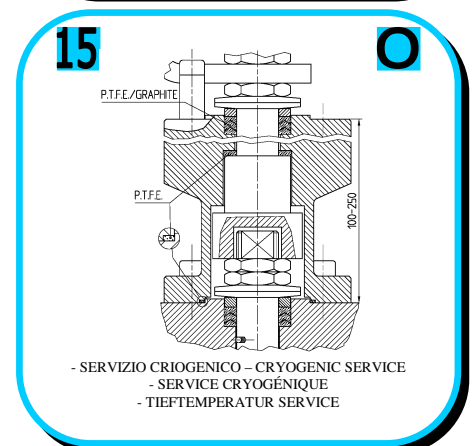
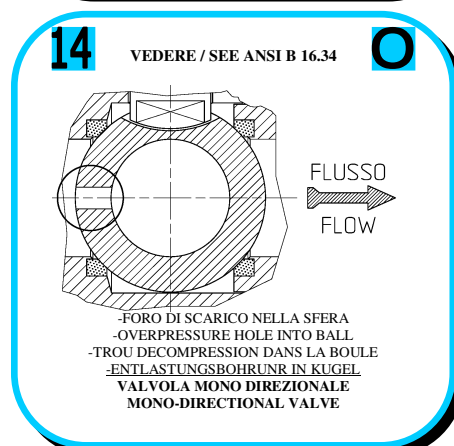
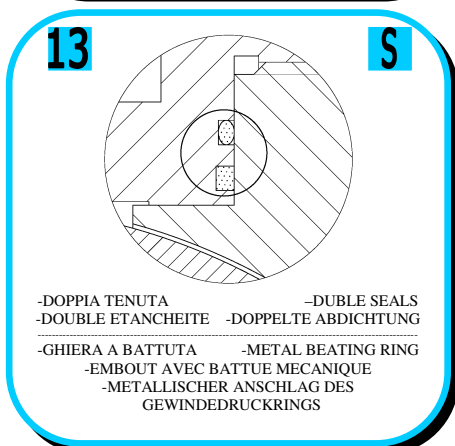
• ESECUZIONI • EXECUTIONS • EXECUTIONS • AUSFÜHRUNGEN



ADLER

UNA GAMMA COMPLETA
 PRIVILEGIANDO LA QUALITA'

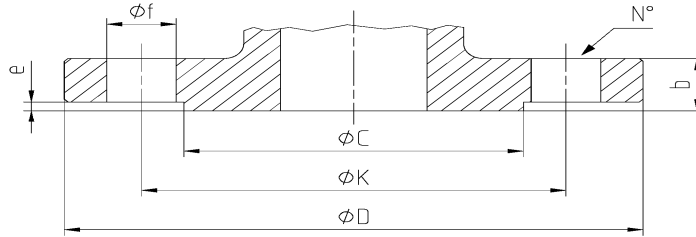
A COMPLETE RANGE PRIVILEGING
 THE QUALITY





DIMENSIONI FLANGE ANSI B16.5/UNI EN 1092-1
FLANGE DIMENSION ANSI B16.5/UNI EN 1092-1
DIMENSIONS BRIDES ANSI B16.5/UNI EN 1092-1
FLANSCHANSCHLUSSMASSE ANSI B16.5/UNI EN 1092-1

TABLE
03-04



UNI EN 1092-1

DN	Ref.	10	15	20	25	32	40	50	65	80	100	125	150	200	250	300
PN 10	D						150	165	185	200	220	250	285	340		
	C						88	102	122	138	158	188	212	268		
	K						110	125	145	160	180	210	240	295		
	N°						4	4	4*	8	8	8	8	8		
	f						18	18	18	18	18	18	22	22		
	b						18	18	18	20	20	22	22	24		
	e						3	3	3	3	3	3	3	3		
PN 16	D						150	165	185	200	220	250	285	340		
	C						88	102	122	138	158	188	212	268		
	K						110	125	145	160	180	210	240	295		
	N°						4	4	4*	8	8	8	8	12		
	F						18	18	18	18	18	18	22	22		
	b						18	18	18	20	20	22	22	24		
	e						3	3	3	3	3	3	3	3		

* N° 8 per UNI 2223/2229

ANSI B16.5

DN	Ref.	1/2"	3/4"	1"	1 1/4"	1 1/2"	2"	2 1/2"	3"	4"	5"	6"	8"	10"	12"
ANSI 150 RF	D					127	152.4	177.8	190.5	228.6	254	279.4	342.9		
	C					92	104.7	127	157.3	185.7	215.9	269.8	269.8		
	K					98.6	120.7	139.7	152.4	190.5	215.9	241.3	298.5		
	N°					4	4	4	4	8	8	8	8		
	f					19.1	19.1	19.1	19.1	19.1	22.4	22.4	22.4		
	b					17.6	19.1	22.4	23.9	23.9	23.9	25.4	28.5		
	e					1.6	1.6	1.6	1.6	1.6	1.6	1.6	1.6		

ADLER COMPANY



PRZEDSTAWICIEL W POLSCE:

ARA
PNEUMATIK

53-012 Wrocław tel. 71 364 72 85
ul. Wyścigowa 38 fax 71 364 72 83

www.arapneumatik.pl



ADLER SpA - VALVOLE A SFERA
 20010 S. STEFANO TICINO (MI) ITALY V.le BORLETTI, 14 Tel. +39/02974842.11 FAX +39/0297271698
 E-mail: adler@adlerspa.com <http://www.adlerspa.com>