

ISO 9001:2008 by L.R.
PED DIR. 97/23/EC by L.R.
ATEX DIR. 94/9/EC by B.V.
FIRE SAFE EXECUTION by L.R.
ISO 15848 by TÜV
ANTISTATIC DEVICE by L.R.
FIRE SAFE TESTED ISO 10497 by L.R.

TYPE
FC1
PN 63 ÷ 100 ÷ 160
ANSI 600

NORME E DIRETTIVE APPLICATE DISPONIBILI AL SEGUENTE LINK:
STANDARD AND DIRECTIVE APPLIED AVAILABLE AT FOLLOWING LINK:
http://www.adlerspa.com/pdf/NORME_ADLER.pdf

VALVOLE A SFERA "CORPO PIATTO" PASSAGGIO TOTALE

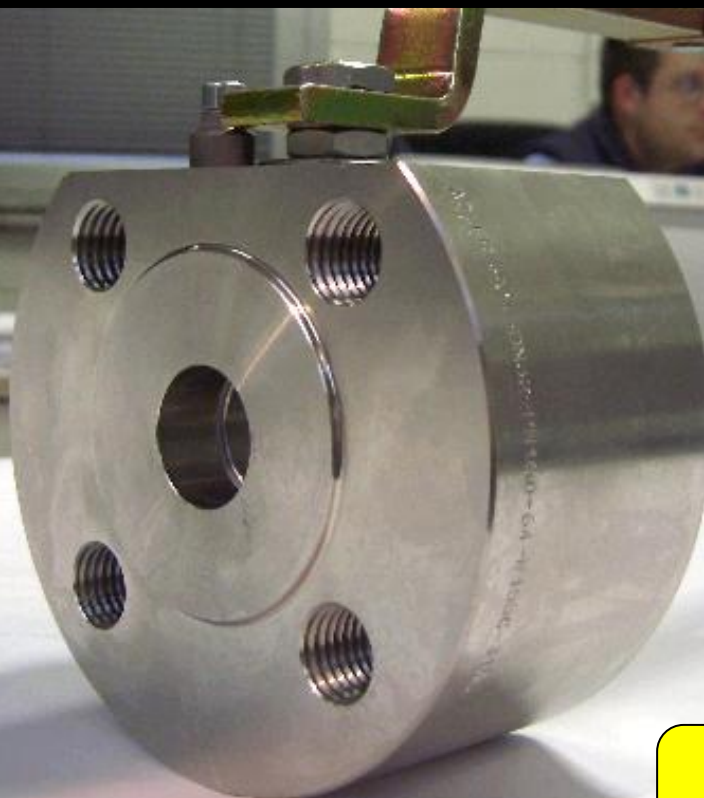
ISO nbr° LRC 0160281 QMS issued by L.R.Q.A. PED nbr° COV 0212112/01 issued by L.R.V.
ATEX nbr° 40.2003.4392 issued by B.V. ISO 15848 nbr° I-148466/1-/2 issued by TÜV

On request
S.I.L. 3
According to IEC 61508

FULL BORE ACCORDING
TO ISO 14313

CONSTRUCTION ACCORDING TO:
BS EN 12516-2 - ANSI B16.34
ISO 14313 - EN 558

On request
FIRE SAFE
According to ISO 10497
"ISO-FT"



**BALL VALVES "WAFER TYPE" FULL BORE
"WAFER" PASSAGE INTEGRAL
FLANSCHKUGELHÄHNE IN "KOMPAKTBAUWEISE"
VOLLER DURCHGANG**

PRZEDSTAWICIEL W POLSCE:

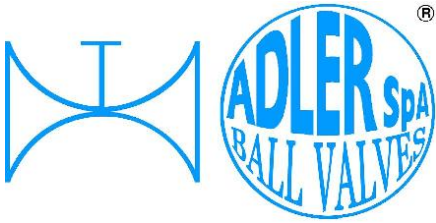
ARA

PNEUMATIK

53-012 Wrocław tel. 71 364 72 85
ul. Wyciągowa 38 fax 71 364 72 83

www.arapneumatik.pl

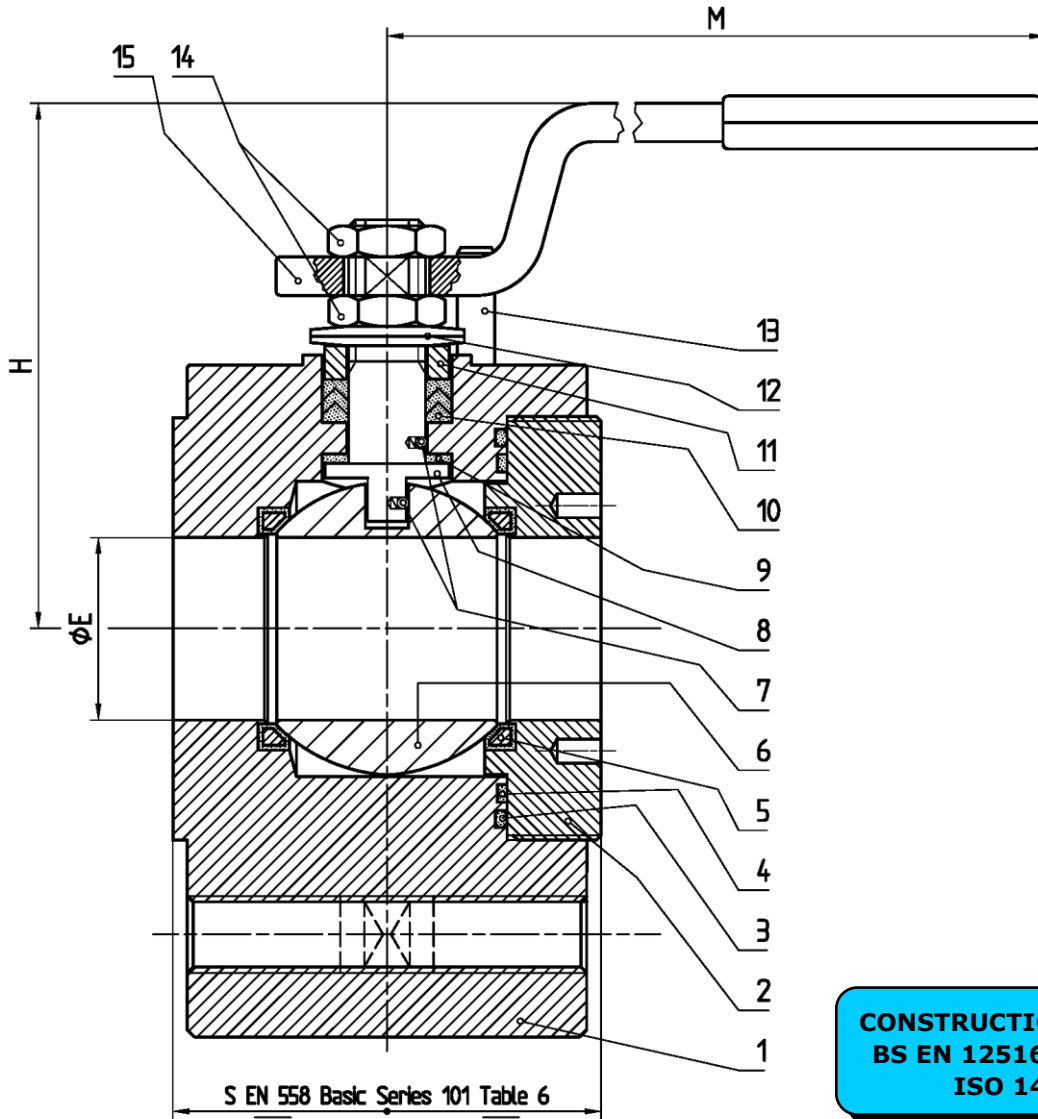




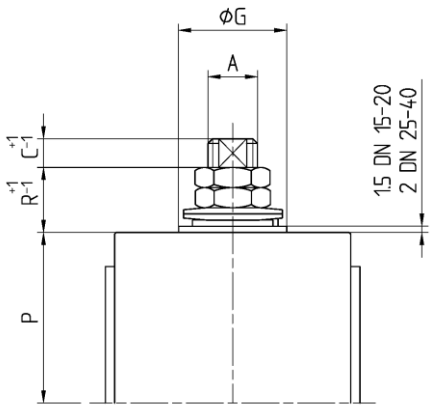
ISO 9001:2008 by L.R.
 PED DIR. 97/23/EC by L.R.
 ATEX DIR. 94/9/EC by B.V.
 FIRE SAFE EXECUTION by L.R.
 ISO 15848 by TÜV
 ANTISTATIC DEVICE by L.R.
 FIRE SAFE TESTED ISO 10497 by L.R.

TYPE
FC1
 PN 63 ÷ 100 ÷ 160
 ANSI 600

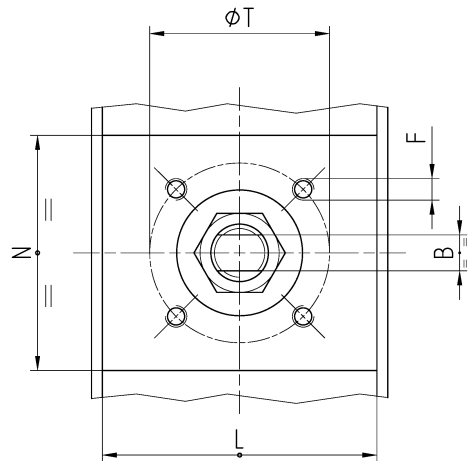
VALVOLA A SFERA "CORPO PIATTO" PASSAGGIO TOTALE
BALL VALVES "WAFER TYPE" FULL BORE
ROBINETS A BOISSEAU SPHERIQUE "WAFER" PASSAGE INTEGRAL
FLANSCHKUGELHÄHNE IN "KOMPAKTBAUWEISE" VOLLER DURCHGANG



CONSTRUCTION ACCORDING TO:
 BS EN 12516-2 - ANSI B16.34
 ISO 14313 - EN 558



• ACCOPIAMENTO VALVOLA
 ATTUATORE
 • CONNECTION VALVE
 ACTUATOR
 • ACCOUPLEMENT ROBINET-
 ACTIONNEUR
 • ZUSAMMENBAU KUGELHAHN
 ANTRIEB
ISO-5211



| N. | DESCRIZIONE DESCRIPTION DESCRIPTION BESCHREIBUNG | MATERIALI MATERIALS MATERIAUX WERKSTOFFE |
|----|--|---|
| 1 | CORPO BODY CORPS KÖRPER | ASTM A105 ASTM A479 304/304L ASTM A479 316/316L |
| 2 | GHIERA INSERT EMBOUT GEWINDED RUCKRING | ASTM A105 ASTM A479 304/304L ASTM A479 316/316L |
| 3* | O-RING | FKM - (VITON) |
| 4* | ANELLO SEAL ANNEAU DICHTUNGSRING | P.T.F.E. |
| 5* | SEDE RINFORZATA SEAT REINFORCED SIEGE RENFORCE SITZRING VERSTÄRKT | P.T.F.E. (BAM CERTIFIED) R.P.T.F.E. (OPTIONAL) |
| 6 | SFERA BALL BOULE KUGEL | ASTM A479 304/304L ASTM A351 CF8 ASTM A479 316/316L ASTM A351 CF8M |
| 7 | DISPOSITIVO ANTISTATICO ANTISTATIC DEVICE CONTACT ANTISTATIQUE ANTISTATIK VORRICHTUNG | ASTM A479 316/316L |
| 8 | STELO STEM TIGE SPINDEL | ASTM A479 304/304L ASTM A479 316/316L |

| N. | DESCRIZIONE DESCRIPTION DESCRIPTION BESCHREIBUNG | MATERIALI MATERIALS MATERIAUX WERKSTOFFE |
|-----|--|--|
| 9* | BUSSOLA STEM SEAL JOINT TIGE UNTERE SPINDELABDICHTUNG | P.T.F.E. |
| 10* | PACCO A "V" CHEVRON RINGS JOINT A "V" 3 FACHE DACHMANSCHETTE | P.T.F.E. / GRAFITE P.T.F.E. / GRAPHITE P.T.F.E. / GRAPHITE P.T.F.E. / GRAPHIT |
| 11 | PREMIBUSSOLA PRESSING BUSH PRESSE RONDELLE STOPFBUCHSDRUCKRING | ASTM A479 304 |
| 12 | MOLLE A TAZZA SPRING WASHERS RONDELLES BELLEVILLE TELLERFEDERN | C72/50Cr V ₄ X5CrNi17.7 or X12CrNi17.7 ON REQUEST |
| 13 | VITE DI FERMO E FERMO PIN AND STOP PIN PLOT ET PLOT D'ARRET ANSCHLAGBOLZEN | UNI3740 8.8 UNI 3951 A2-70 ON REQUEST |
| 14 | DADO - CONTRODADO NUT - LOCK NUT ECROU - CONTRE-ECROU MUTTER - KONTERMUTTER | UNI 3740 - 6S ASTM A479 304 ON REQUEST |
| 15 | LEVA WRENCH LEVIER HANDHEBEL | AISI 1010 ASTM A479 304 ON REQUEST |
| 16 | | |

* RICAMBI CONSIGLIATI - RECOMMENDED SPARE PARTS - PIECES DE RECHANGE CONSEILLEES - ERSATZTEIL EMPFEHLUNG

DIMENSIONI - DIMENSION - DIMENSIONS - ABMESSUNGEN

| DN | 10 | 15 | 20 | 25 | 32 | 40 | 50 | 65 | 80 | 100 | 125 | 150 | 200 | 250 | 300 |
|-----|----|-----|-----|-----|-----|-----|----|----|----|-----|-----|-----|-----|-----|-----|
| A | | 12 | 12 | 16 | 16 | 22 | | | | | | | | | |
| B | | 8 | 8 | 10 | 10 | 14 | | | | | | | | | |
| C | | 10 | 10 | 10 | 10 | 12 | | | | | | | | | |
| E | | 15 | 15 | 25 | 30 | 38 | | | | | | | | | |
| F | | M5 | M5 | M6 | M6 | M8 | | | | | | | | | |
| ISO | | F03 | F03 | F05 | F05 | F07 | | | | | | | | | |
| G | | 25 | 25 | 35 | 35 | 55 | | | | | | | | | |
| H | | 78 | 80 | 101 | 104 | 129 | | | | | | | | | |
| L | | 51 | 56 | 61 | 71 | 79 | | | | | | | | | |
| M | | 185 | 185 | 280 | 280 | 370 | | | | | | | | | |
| N | | 76 | 97 | 97 | 107 | 104 | | | | | | | | | |
| P | | 36 | 43 | 50 | 56 | 67 | | | | | | | | | |
| R | | 14 | 9 | 16 | 14 | 24 | | | | | | | | | |
| P | | 36 | 43 | 46 | 50 | 67 | | | | | | | | | |
| R | | 14 | 8 | 20 | 20 | 24 | | | | | | | | | |
| S | | 55 | 60 | 65 | 75 | 85 | | | | | | | | | |
| T | | 36 | 36 | 50 | 50 | 70 | | | | | | | | | |
| ~Kg | | 2,2 | 3,7 | 4,5 | 6,3 | 9,5 | | | | | | | | | |

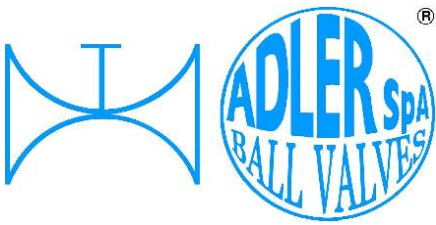
TYPE
FC2
VEDERE
SEE
VOIR
SIEHE
PN 63-100-160
ANSI 600

- DATI E CARATTERISTICHE SOGGETTI A VARIAZIONI SENZA PREAVVISO
- SPECIFICATIONS SUBJECT TO MODIFICATION WITHOUT PRIOR NOTICE
- TOUS DROITS DE MODIFICATION RESERVES
- KONSTRUKTIONÄNDERUNGEN VORBEHALTEN

PN 63 - 100 - 160

ANSI 600





ISO 9001:2008 by L.R.
 PED DIR. 97/23/EC by L.R.
 ATEX DIR. 94/9/EC by B.V.
 FIRE SAFE EXECUTION by L.R.
 ISO 15848 by TÜV
 ANTISTATIC DEVICE by L.R.
 FIRE SAFE TESTED ISO 10497 by L.R.

TYPE
FC1
 PN 63 ÷ 100 ÷ 160
 ANSI 600

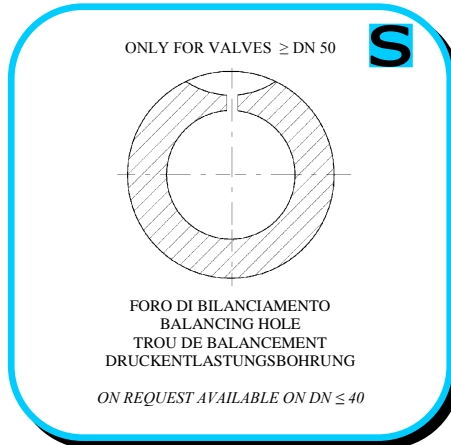
VALVOLA A SFERA "CORPO PIATTO" PASSAGGIO TOTALE
 BALL VALVES "WAFER TYPE" FULL BORE

ROBINETS A BOISSEAU SPHERIQUE "WAFER" PASSAGE INTEGRAL
 FLANSCHKUGELHÄHNE IN "KOMPAKTBAUWEISE" VOLLER DURCHGANG

• ESECUZIONI • EXECUTIONS • EXECUTIONS • AUSFÜHRUNGEN



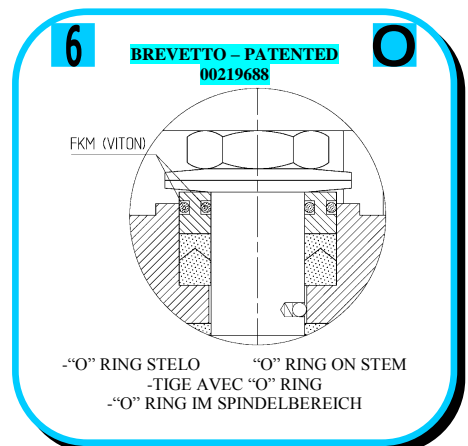
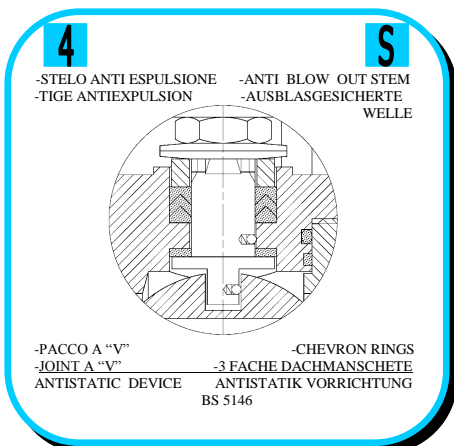
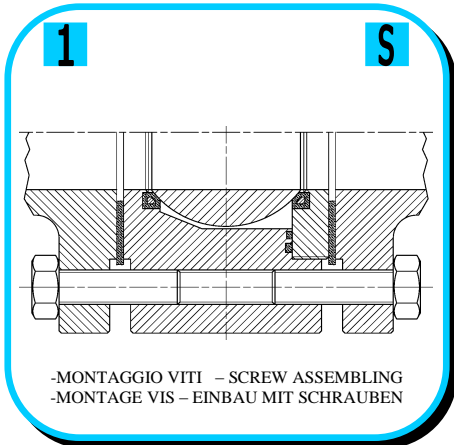
EXECUTION 4 - 12

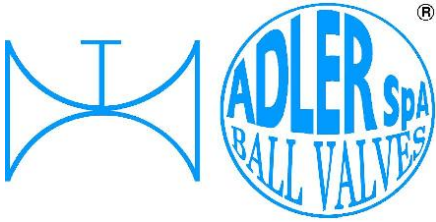


EXECUTION 6 - 16

S STANDARD

O OPTIONAL





ISO 9001:2008 by L.R.
 PED DIR. 97/23/EC by L.R.
 ATEX DIR. 94/9/EC by B.V.
 FIRE SAFE EXECUTION by L.R.
 ISO 15848 by TÜV
 ANTISTATIC DEVICE by L.R.
 FIRE SAFE TESTED ISO 10497 by L.R.

TYPE
FC1
 PN 63 ÷ 100 ÷ 160
 ANSI 600

VALVOLA A SFERA "CORPO PIATTO" PASSAGGIO TOTALE
 BALL VALVES "WAFER TYPE" FULL BORE

ROBINETS A BOISSEAU SPHERIQUE "WAFER" PASSAGE INTEGRAL
 FLANSCHKUGELHÄHNE IN "KOMPAKTBAUWEISE" VOLLER DURCHGANG

• ESECUZIONI • EXECUTIONS • EXECUTIONS • AUSFÜHRUNGEN

7 **O**

-PROLUNGA STELO -STEM EXTENSION
 -TIGE PROLONGEE -SPINDELVERLÄNGERUNG

8 **O**

-PARTICOLARI INOX
 -STAINLESS STEEL DETAILS
 -ACCESSOIRES EN INOX
 -EDELSTAHLTEILE

9 **S**

-ATTACCO "ISO" -SYSTEM "ISO"
 -"ISO" FASTENING
 -ANSCHLUSS "ISO"

10 **S**

-SFERA CONTENUTA -CONTENTS BALL
 -BOULE CONTENUE
 -NICHT RAUSRAGENDE KUGEL

**LOCKING DEVICE
 OPEN OR CLOSE POSITIONS**

12 **O**

**FIRE SAFE
 ISO 10497 "ISO-FT"
 (BS 6755 / API 607)**

13 **S**

-DOPPIA TENUTA -DOUBLE SEALS
 -DOUBLE ETANCHEITE -DOPPELTE ABDICHTUNG
 -GHIERA A BATTUTA -METAL BEATING RING
 -EMBOUT AVEC BATTUE MECANIQUE
 -METALLSICHER ANSCHLAG DES
 GEWINDEDRUCKRINGS

14 **O**

VEDERE / SEE ANSI B16.34

FLUSSO
 FLOW

-FORO DI SCARICO NELLA SFERA
 -OVERPRESSURE HOLE INTO BALL
 -TROU DECOMPRESSION DANS LA BOULE
 -ENTLASTUNGSBOHRUNG IN DER KUGEL
 VALVOLA MONO DIREZIONALE
 MONO-DIRECTIONAL VALVE

HARDNESS TOOL

16 **O**

-FIRE SAFE ISO FT + "O" RING STELO
 -FIRE SAFE ISO FT + "O" RING ON STEM
 -SECURITE FEU ISO FT + TIGE AVEC "O" RING
 -FEUERSICHERE AUSFÜHRUNG ISO FT +
 "O" RING IM SPINDELBEREICH

FIRE SAFE ISO FT CERTIFICATE

THREAD GAUGES



**VITI D'ASSEMBLAGGIO PER FC1
ASSEMBLING SCREWS FOR FC1
VIS D'ASSEMBLAGE POUR FC1
MONTAGESCHRAUBEN FÜR FC1**

**TABLE
07**

N° VITI – DIMENSIONE • N° SCREW – DIMENSIONS • N° VIS- DIMENSIONS • N° SCHRAUBEN-ABMESSUNGEN

EUROPEAN NORM

| DN PN | 10-15 | 20 | 25 | 32 | 40 | 50 | 65 | 80 | 100 | 125 | 150 | 200 |
|----------|-----------|-----------|-----------|-----------|-----------|----|----|----|-----|-----|-----|-----|
| 63 | 8 M12 X35 | 8 M16 X40 | 8 M16 X45 | 8 M20 X50 | 8 M20 X50 | | | | | | | |
| 100 | 8 M12 X35 | 8 M16 X40 | 8 M16 X45 | 8 M20 X50 | 8 M20 X50 | | | | | | | |
| 160 | 8 M12 X35 | 8 M16 X40 | 8 M16 X45 | 8 M20 X50 | 8 M20 X55 | | | | | | | |

ANSI METRIC
(STANDARD ADLER)

| Ø Rating | 1/2" | 3/4" | 1" | 1 1/4" | 1 1/2" | 2" | 2 1/2" | 3" | 4" | 5" | 6" | 8" |
|-------------|-----------|-----------|-----------|-----------|-----------|----|--------|----|----|----|----|----|
| 600 | 8 M14 X45 | 8 M16 X45 | 8 M16 X50 | 8 M16 X50 | 8 M20 X55 | | | | | | | |

ANSI B1.1 UNC
(ON REQUEST)

| Ø Rating | 1/2" | 3/4" | 1" | 1 1/4" | 1 1/2" | 2" | 2 1/2" | 3" | 4" | 5" | 6" | 8" |
|-------------|---------------|---------------|-----------|-----------|---------------|----|--------|----|----|----|----|----|
| 600 | 8 1/2 x 1 3/4 | 8 5/8 x 1 3/4 | 8 5/8 x 2 | 8 5/8 x 2 | 8 3/4 x 2 1/4 | | | | | | | |

PRZEDSTAWICIEL W POLSCE:

ARA
PNEUMATIK

53-012 Wrocław tel. 71 364 72 85
ul. Wyścigowa 38 fax 71 364 72 83

www.arapneumatik.pl



ADLER SpA – VALVOLE A SFERA
20010 S. STEFANO TICINO (MI) ITALY V.le BORLETTI, 14 Tel. +39/02974842.11 FAX +39/0297271698
E-mail: adler@adlerspa.com <http://www.adlerspa.com>