

ISO 9001:2008 by L.R.  
PED DIR. 97/23/EC by L.R.  
ATEX DIR. 94/9/EC by B.V.  
FIRE SAFE EXECUTION by L.R.  
ISO 15848 by TÜV  
ANTISTATIC DEVICE by L.R.  
FIRE SAFE TESTED ISO 10497 by L.R.  
[WWW.ADLERSPA.COM](http://WWW.ADLERSPA.COM)

TYPE  
**FK2**  
ANSI 150

## BALL VALVES

**"ANSI B16.10" FULL BORE SPLIT BODY WITH HEATING JACKET**

## ROBINETS A BOULE

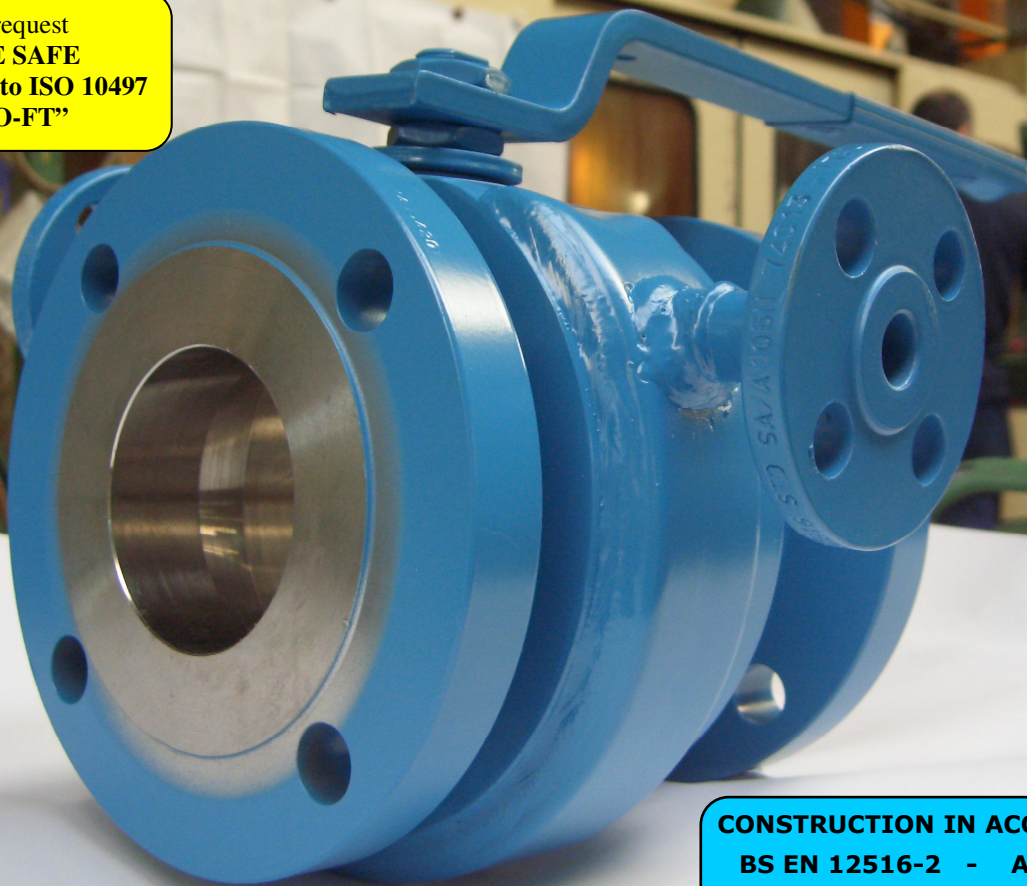
**"ANSI B16.10" PASSAGE INTEGRAL 2 PIECES AVEC ENVELOPPE**

## FLANSCHKUGELHÄHNE IN "ANSI B16.10"

**VOLLER DURCHGANG ZWEIFTEILIGES GEHÄUSE MIT HEIZMANTEL**

ISO nbr° LRC 0160281 QMS issued by L.R.Q.A. PED nbr° COV 0212112/01 issued by L.R.V.  
ATEX nbr° 40.2003.4392 issued by B.V. ISO 15848 nbr° I-148466/1-/2 issued by TÜV  
AD-MERKBLATT HPO EN ISO 3834-3 report n. 179025 issued by TÜV

On request  
**FIRE SAFE**  
According to ISO 10497  
"ISO-FT"



CONSTRUCTION IN ACCORDING TO:  
BS EN 12516-2 - ANSI B16.34  
ISO 14313 - ANSI B16.5  
ANSI B16.10/UNI EN 558-2

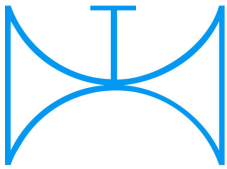
PRZEDSTAWICIEL W POLSCE:

**ARA**  
PNEUMATIK

53-012 Wrocław tel. 71 364 72 85  
ul. Wyścigowa 38 fax 71 364 72 83

[www.arapneumatik.pl](http://www.arapneumatik.pl)

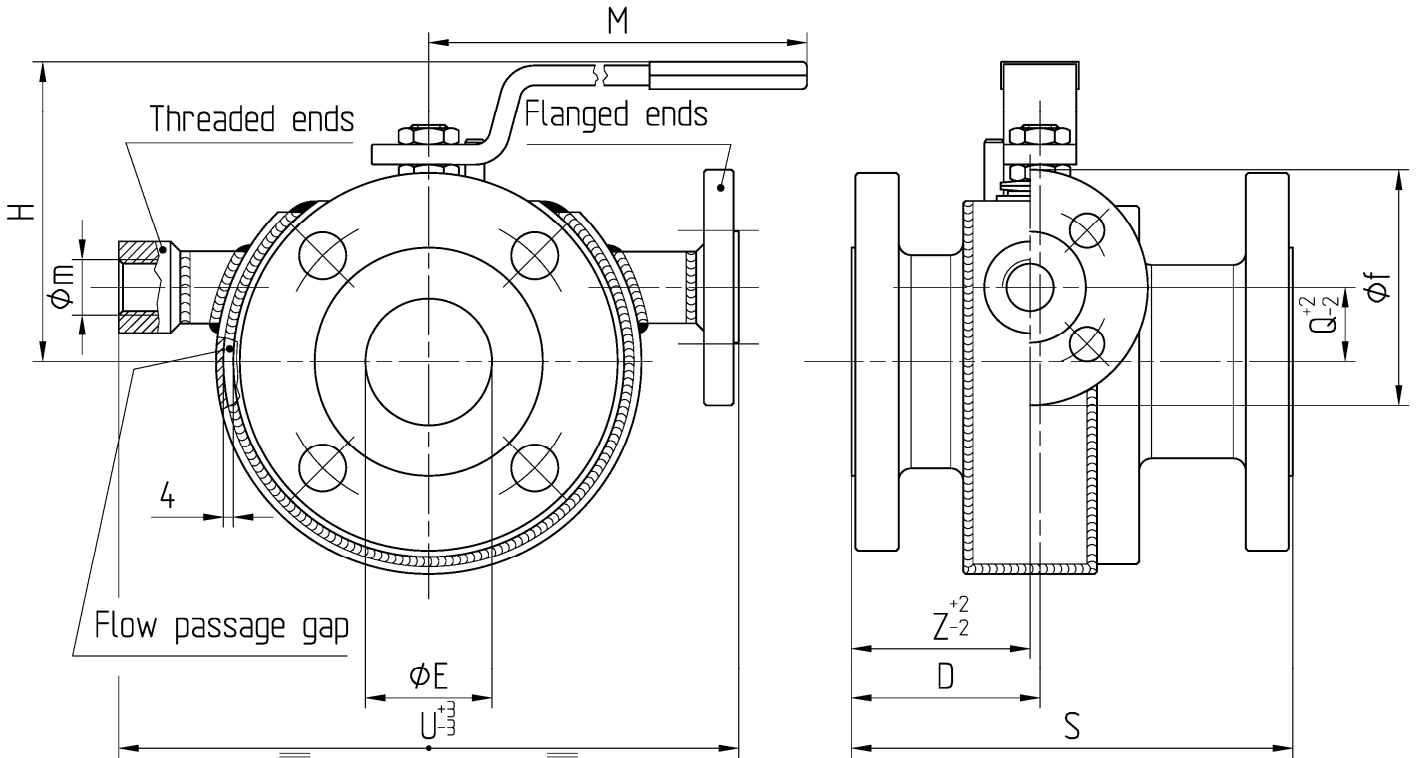




**ISO 9001:2008 by L.R.**  
**PED DIR. 97/23/EC by L.R.**  
**ATEX DIR. 94/9/EC by B.V.**  
**FIRE SAFE EXECUTION by L.R.**  
**ISO 15848 by TÜV**  
**ANTISTATIC DEVICE by L.R.**  
**FIRE SAFE TESTED ISO 10497 by L.R.**

**TYPE**  
**FK2**  
**ANSI 150**

**VALVOLA A SFERA "ANSI B 16.10" SPLIT BODY PASSAGGIO TOTALE CON CAMICIA DI RISCALDAMENTO**  
**BALL VALVES "ANSI B 16.10" SPLIT BODY FULL BORE WITH HEATING JACKET**  
**ROBINETS A BOULE "ANSI B 16.10" PASSAGE INTEGRAL 2 PIECES AVEC ENVELOPPE**  
**FLANSCHKUGELHÄHNE IN "ANSI B 16.10" VOLLER DURCHGANG ZWEITEILIGES GEHÄUSE MIT HEIZMANTEL**



Valvola base FE2  
 Main Ball Valve FE2

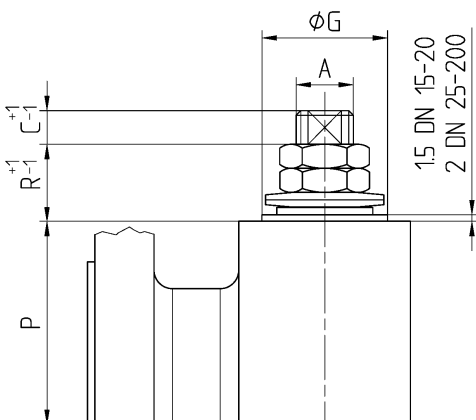
Pressione massima di lavoro nelle camicie 10 bar  
 Maximum working pressure for jacket 10 bar

**CONSTRUCTION IN ACCORDING TO:**  
**BS EN 12516-2 - ANSI B16.34**  
**ISO 14313 - ANSI B16.5**  
**ANSI B16.10/UNI EN 558-2**

**DN 200**  
 -CONSIGLIATO  
 RIDUTTORE MANUALE  
 -MANUAL GEAR BOX  
 SUGGESTED  
 -REDUCTEUR MANUEL  
 CONSEILLE  
 -EMPFEHLEN WIR EIN  
 HANDGETRIEBE

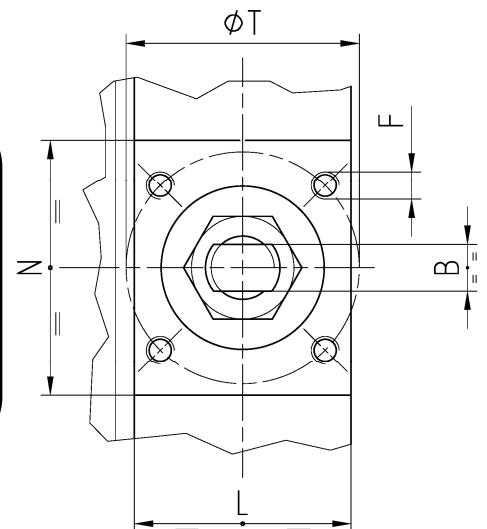
Materiale camicia Jacket material	CARBON STEEL (STANDARD) STAINLESS STEEL (OPTIONAL)
--------------------------------------	---

FK2/08 RIPRODUZIONE VIETATA - COPYRIGHT



- ACCOPPIAMENTO VALVOLA ATTUATORE
- CONNECTION VALVE ACTUATOR
- ACCOUPLEMENT ROBINET-ACTIONNEUR
- ZUSAMMENBAU KUGELHAHN ANTRIEB

**ISO-5211**



N.	DESCRIZIONE DESCRIPTION BESCHREIBUNG	MATERIALI MATERIALS MATERIAUX WERKSTOFFE
1	CORPO BODY CORPS KÖRPER	ASTM A105 ASTM A 216 WCB ASTM A 182 F316- A479 S31600 ASTM A 351 CF8M
2	LATERALE END LATERAL GEGENGEHÄUSE	ASTM A105 ASTM A 182 F316- A479 S31600 ASTM A 351 CF8M
3*	O-RING	FKM - (VITON)
4*	ANELLO SEAL ANNEAU DICHTUNGSRING	P.T.F.E.
5*	SEDE SEAT SIEGE SITZRING	P.T.F.E. + 15% FIBERGLASS
6	SFERA BALL BOULE KUGEL	ASTM A182 F304-A479 S30400 ASTM A351 CF8 ASTM A182 F316-A479 S31600 ASTM A351 CF8M
7	DISPOSITIVO ANTISTATICO ANTISTATIC DEVICE CONTACT ANTISTATIQUE ANTISTATIK VORRICHTUNG	ASTM A479 S31600
8	STELO STEM TIGE SPINDEL	ASTM A182 F304 A479 S30400 ≥ DN 40 ASTM A182 F316 A479 S31600

N.	DESCRIZIONE DESCRIPTION BESCHREIBUNG	MATERIALI MATERIALS MATERIAUX WERKSTOFFE
9*	BUSSOLA STEM SEAL JOINT TIGE UNTERE SPINDELABDICHTUNG	P.T.F.E.
10*	PACCO A "V" CHEVRON RINGS JOINT A "V" 3 FACHE DACHMANSCHETTE	P.T.F.E. / GRAFITE P.T.F.E. / GRAPHITE P.T.F.E. / GRAPHITE P.T.F.E. / GRAPHIT
11	PREMIBUSSOLA PRESSING BUSH PRESSE RONDELLE STOPFBUCHSDRUCKRING	ASTM A479 S31600
12	MOLLE A TAZZA SPRING WASHERS RONDELLES BELLEVILLE TELLERFEDERN	C72/50Cr V4 ZINCATO - GALVANIZED ZINGUE - VERZINKT
13	VITE DI FERMO E FERMO PIN AND STOP PIN PLOT ET PLOT D'ARRET ANSCHLAGBOLZEN	UNI 3740 - 8.8 ZINCATO - GALVANIZED ZINGUE - VERZINKT
14	DADO - CONTRODADO NUT - LOCK NUT ECROU - CONTRE-ECROU MUTTER - KONTERMUTTER	UNI 3740 - 6S ZINCATO - GALVANIZED ZINGUE - VERZINKT
15	LEVA WRENCH LEVIER HANDHEBEL	UNI 5946 Fe 37 ZINCATO - GALVANIZED ZINGUE - VERZINKT
16	VITE SCREW VIS SCHRAUBE	UNI 3740-8.8 ZINCATO-GALVANIZED- ZINGUE-VERZINKT

\* RICAMBI CONSIGLIATI - RECOMMENDED SPARE PARTS - PIECES DE RECHANGE CONSEILLEES - ERSATZTEIL EMPFEHLUNG

## DIMENSIONI - DIMENSION - DIMENSIONS - ABMESSUNGEN

DN	15	20	25	32	40	50	65	80	100	125	150	200	250	300
A	10	10	12	12	16	16	22	22	30	30	42	48		
B	6	6	8	8	10	10	14	14	18	18	28	32		
C	7	7	10	10	10	10	12	17	17	17	19	20		
D	46	48,5	49	52	58	76	72	75	77	100	117	155		
E	15	19	25	30	38	51	64	76	101	118	152	203		
F	M5	M5	M5	M5	M6	M6	M8	M8	M8	M10	M12	M16		
f	Ø1/2" GAS								Ø1" GAS					
ISO	F03	F03	F03	F03	F05	F05	F07	F07	F07	F10	F12	F14		
G	25	25	25	25	35	35	55	55	55	70	85	100		
H	86	88	113	119	110	120	144	152	174	188	256	294		
L	33	33	33	35	45	53	62	62	64	92	129	176		
M	145	145	185	185	280	280	370	370	470	650	750	900		
m	DN 15 PN 16								DN 25 PN 16					
N	33	39	43	55	57	64	67	65	70	97	109	123		
P	32,5	35	41	46,5	55	65	82	86	99,5	113,5	144	183		
Q				25	30	30	45	50	70	80	95	130		
R	8	8	17	17	20	20	23	23	26	26	34	36		
S	108	117	127	140	165	178	190	203	229	254	267	419		
T	36	36	36	36	50	50	70	70	70	102	125	140		
U	170	180	190	210	230	250	270	300	340	360	420	500		
Z	46	48,5	49	52	58	72	72	75	76	100	117	155		
Kg	3,7	4,6	5,5	7,5	10,5	16	23	27	36	58	94	163		
Kg										50	70	125		

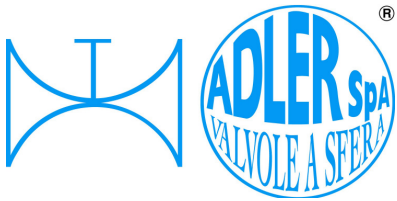
- DATI E CARATTERISTICHE SOGGETTI A VARIAZIONI SENZA PREAVVISO
- SPECIFICATIONS SUBJECT TO MODIFICATION WITHOUT PRIOR NOTICE
- TOUS DROITS DE MODIFICATION RESERVES
- KONSTRUKTIONSÄNDERUNGEN VORBEHALTEN

ASTM A 105

ASTM A 216 WCB - A 351 CF8M



ADLER SpA - VALVOLE A SFERA  
20010 S. STEFANO TICINO (MI) ITALY V.le BORLETTI, 14 Tel. +39/02974842.11 FAX +39/0297271698  
E-mail: [adler@adlerspa.com](mailto:adler@adlerspa.com) <http://www.adlerspa.com>



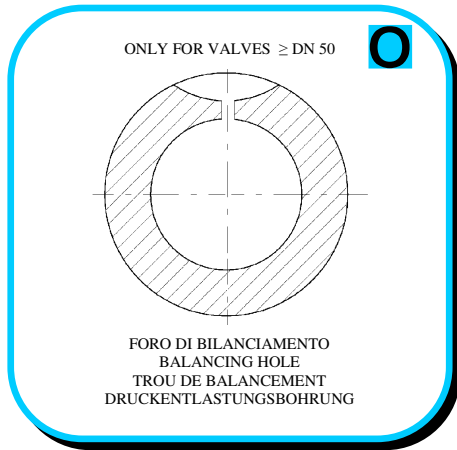
ISO 9001:2008 by L.R.  
 PED DIR. 97/23/EC by L.R.  
 ATEX DIR. 94/9/EC by B.V.  
 FIRE SAFE EXECUTION by L.R.  
 ISO 15848 by TÜV  
 ANTISTATIC DEVICE by L.R.  
 FIRE SAFE TESTED ISO 10497 by L.R.

TYPE  
**FK2**  
 ANSI 150

VALVOLA A SFERA "ANSI B16.10" PASSAGGIO TOTALE CON CAMICIA DI RISCALDAMENTO  
 BALL VALVES "ANSI B16.10" FULL BORE WITH HEATING JACKET

ROBINETS A BOULE "ANSI B16.10" PASSAGE INTEGRAL AVEC ENVELOPPE  
 FLANSCHKUGELHÄHNE IN "ANSI B16.10" VOLLER DURCHGANG MIT HEIZMANTEL

▪ ESECUZIONI ▪ EXECUTIONS ▪ EXECUTIONS ▪ AUSFÜHRUNGEN



EXECUTION 4 12

EXECUTION 6 - 16

**S** STANDARD

**O** OPTIONAL

**1** **S**  
**CARBON STEEL**  
 ASTM A105  
 DN 15 ÷ 300  
 or  
 ASTM A 216 WCB  
 DN 125 ÷ 300

**2** **S**  
**STAINLESS STEEL**  
 ASTM A479 S31600  
 DN 15 ÷ 100  
 ASTM A351 CF8M  
 DN 125 ÷ 300

**3** **O**  
**PN**  
**10 ÷ 40**

**4** **S**  
 -STELO ANTI ESPULSIONE -ANTI BLOW OUT STEM  
 -TIGE ANTIEXPULSION -AUSBLASGESICHERTE WELLE

-PACCO A "V" -CHEVRON RINGS  
 -JOINT A "V" -3 FACHE DACHMANSCHETE  
 ANTISTATIC DEVICE ANTISTATIK VORRICHTUNG  
 BS 5146

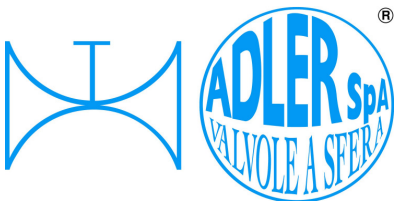
KEY TORQUE

**6** **O**  
 BREVETTO - PATENTED  
 00219688

FKM (VITON)  
 -"O" RING STELO "O" RING ON STEM  
 -TIGE AVEC "O" RING  
 -"O" RING IM SPINDELBEREICH

FK2/08 RIPRODUZIONE VIETATA - COPYRIGHT





ISO 9001:2008 by L.R.  
 PED DIR. 97/23/EC by L.R.  
 ATEX DIR. 94/9/EC by B.V.  
 FIRE SAFE EXECUTION by L.R.  
 ISO 15848 by TÜV  
 ANTISTATIC DEVICE by L.R.  
 FIRE SAFE TESTED ISO 10497 by L.R.

TYPE  
**FK2**  
 ANSI 150

VALVOLA A SFERA "ANSI B16.10" PASSAGGIO TOTALE CON CAMICIA DI RISCALDAMENTO  
 BALL VALVES "ANSI B16.10" FULL BORE WITH HEATING JACKET

ROBINETS A BOULE "ANSI B16.10" PASSAGE INTEGRAL AVEC ENVELOPPE  
 FLANSCHKUGELHÄHNEN IN "ANSI B16.10" VOLLER DURCHGANG MIT HEIZMANTEL

• ESECUZIONI • EXECUTIONS • EXECUTIONS • BESCHREIBUNG

**7** **O**

-PROLUNGA STELO -STEM EXTENSION  
 -TIGE PROLONGEE -SPINDELVERLÄNGERUNG

**8** **O**

-PARTICOLARI INOX  
 -STAINLESS STEEL DETAILS  
 -ACCESSOIRES EN INOX  
 -EDELSTAHLTEILE

**9** **S**

-ATTACCO "ISO" -"ISO" FASTENING  
 -SYSTEM "ISO" -ANSCHLUSS "ISO"

**ADLER**

UNA GAMMA COMPLETA  
 PRIVILEGIANDO LA QUALITA'

A COMPLETE RANGE PRIVILEGING  
 THE QUALITY

**11** **O**

-TENUTA INTEGRALE -POCKETLESS SEATS  
 -TENUCE INTEGRALE -TOTRAUMARM  
 -P.T.F.E. / R.T.F.E.

**12** **O**

FIRE SAFE  
 ISO 10497 "ISO-FT"  
 (BS 6755 / API 607)

**13** **S**

BREVETTO - PATENTED  
 00219619

-DOPPIA TENUTA -DOUBLE SEALS  
 -DOUBLE ETANCHEITE -DOPPELTE ABDICHTUNG  
 -LATERALE A BATTUTA -METAL BEATING END  
 -LATERAL AVEC BATTUE MECANIQUE  
 -METALLISCHER ANSCHLAG DES  
 GEGENGEHAUSES

**14** **S**

VEDERE / SEE ANSI B 16.34

FLUSSO  
 FLOW

-FORO DI SCARICO NELLA SFERA  
 -OVERPRESSURE HOLE INTO BALL  
 -TROU DECOMPRESSION DANS LA BOULE  
 -ENTLASTUNGSBOHRUNG IN DER KUGEL  
 VALVOLA MONO DIREZIONALE  
 MONO-DIRECTIONAL VALVE

**P.M.I.**

**16** **O**

-FIRE SAFE ISO FT + "O" RING STELO  
 -FIRE SAFE ISO FT + "O" RING ON STEM  
 -SECURITE FEU ISO FT + TIGE AVEC "O" RING  
 -FEUERSICHERE AUSFÜHRUNG ISO FT +  
 "O" RING IM SPINDELBEREICH

**17** **O**

-TENUTA INTEGRALE METALLICA  
 -METALLIC POCKET LESS SEATS  
 -TENUCE INTEGRALE METALLIQUE  
 -TOTRAUMARM METALLISCH

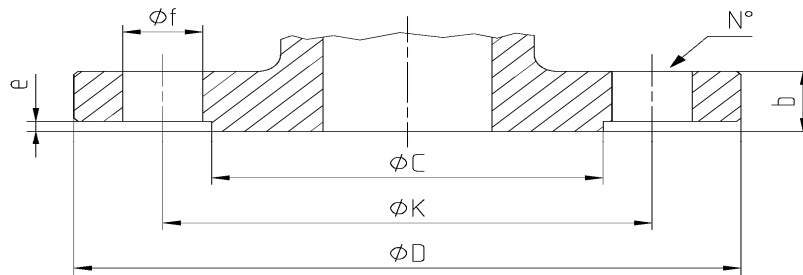
**ANTISTATIC DEVICE  
 CERTIFICATE**

FK2/08 RIPRODUZIONE VIETATA - COPYRIGHT



**DIMENSIONI FLANGE FK2  
FLANGE DIMENSION FK2  
DIMENSIONS BRIDES FK2  
FLANSCHANSCHLUSSMASSE FK2**

**TABLE  
04**



**ANSI B16.5**

DN	Ref.	1/2"	3/4"	1"	1 1/4"	1 1/2"	2"	2 1/2"	3"	4"	5"	6"	8"	10"	12"	
ANSI 150 RF	D	88.9	98.6	108	117.4	127	152.4	177.8	190.5	228.6	254	279.4	342.9			
	C	35.1	43	50.8	63.5	92	104.7	127	157.3	185.7	215.9	269.8	269.8			
	K	6035	69.9	79.2	88.9	98.6	120.7	139.7	152.4	190.5	215.9	241.3	298.5			
	N°	4	4	4	4	4	4	4	4	8	8	8	8			
	f	15.8	15.8	15.8	15.8	19.1	19.1	19.1	19.1	19.1	22.4	22.4	22.4			
	b	11.2	12.7	14.3	15.8	17.6	19.1	22.4	23.9	23.9	23.9	23.9	25.4	28.5		
	e	1.6	1.6	1.6	1.6	1.6	1.6	1.6	1.6	1.6	1.6	1.6	1.6	1.6		

**EN 1092-1 (OPTIONAL)**

DN	Ref.	10	15	20	25	32	40	50	65	80	100	125	150	200	250	300	
PN 10/16	D		95	105	115	140	150	165	185	200	220	250	285	340			
	C		45	58	68	78	88	102	122	138	158	188	212	268			
	K		65	75	85	100	110	125	145	160	180	210	240	295			
	N°		4	4	4	4	4	4	4*	8	8	8	8	8			
	f		14	14	14	18	18	18	18	18	18	18	22	22			
	b		16	18	18	18	18	18	18	18	20	20	22	22	24		
	e		2	2	2	2	3	3	3	3	3	3	3	3	3		
PN 25/40	D		95	105	115	140	150	165	185	200	235	270	300	375			
	C		45	58	68	78	88	102	122	138	162	188	218	285			
	K		65	75	85	100	110	125	145	160	190	220	250	320			
	N°		4	4	4	4	4	4	8	8	8	8	8	12			
	f		14	14	14	18	18	18	18	18	22	26	26	30			
	b		16	18	18	18	18	20	22	24	24	26	28	34			
	e		2	2	2	2	3	3	3	3	3	3	3	3			

\* n°8 fori



PRZEDSTAWICIEL W POLSCE:

**ARA**

**PNEUMATIK**

53-012 Wrocław tel. 71 364 72 85  
ul. Wyścigowa 38 fax 71 364 72 83

[www.arapneumatik.pl](http://www.arapneumatik.pl)



ADLER SpA - VALVOLE A SFERA  
20010 S. STEFANO TICINO (MI) ITALY V.le BORLETTI, 14 Tel. +39/02974842.11 FAX +39/0297271698  
E-mail: [adler@adlerspa.com](mailto:adler@adlerspa.com) <http://www.adlerspa.com>