



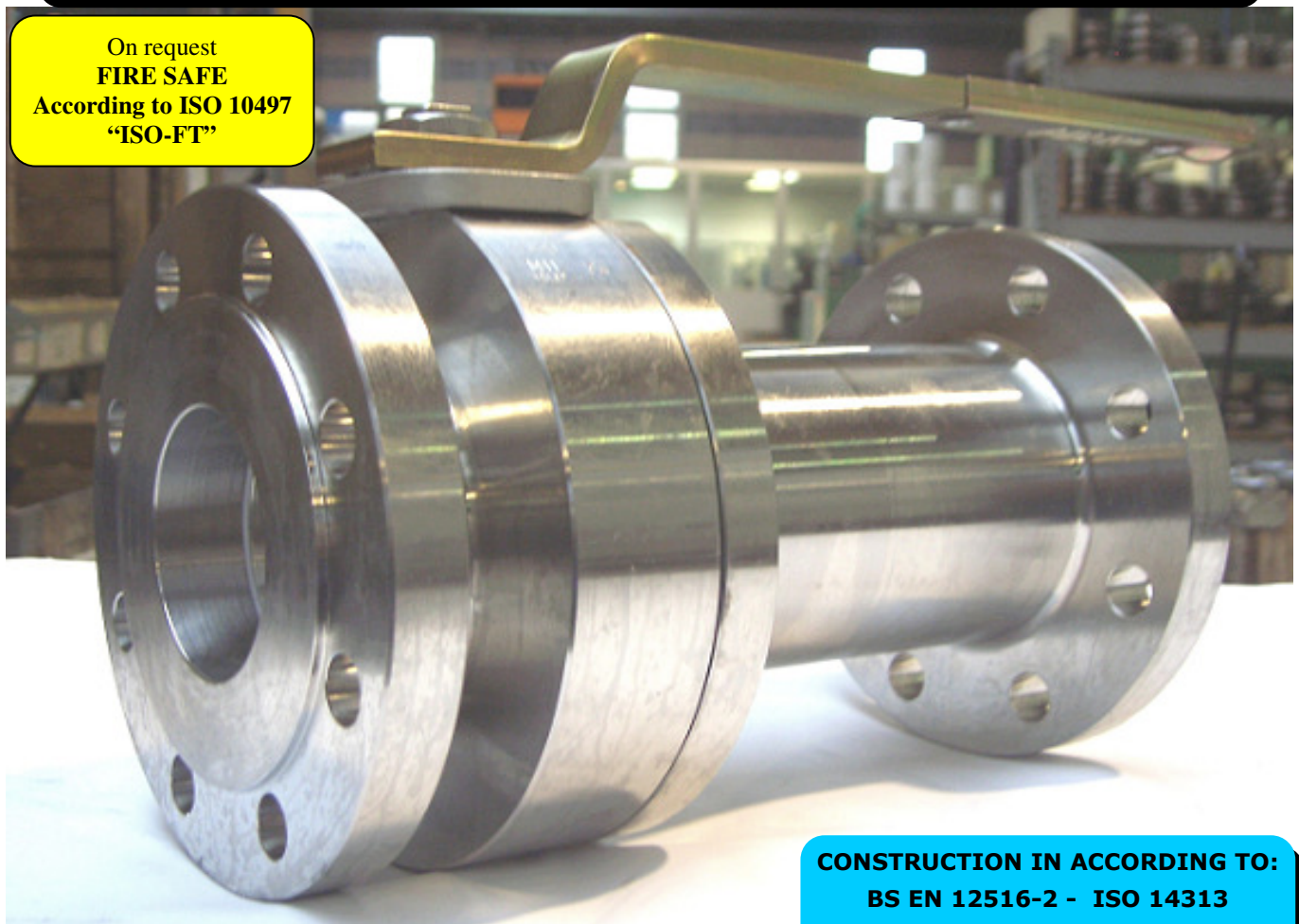
ISO 9001:2008 by L.R.  
PED DIR. 97/23/EC by L.R.  
ATEX DIR. 94/9/EC by B.V.  
FIRE SAFE EXECUTION by L.R.  
ISO 15848 by TÜV  
ANTISTATIC DEVICE by L.R.  
FIRE SAFE TESTED ISO 10497 by L.R.  
[WWW.ADLERSPA.COM](http://WWW.ADLERSPA.COM)

TYPE  
**FN2**  
PN 10 - 40  
PN 63 - 160

**BALL VALVES**  
**"UNI EN 558-1" FULL BORE SPLIT BODY**  
**ROBINETS A BOULE**  
**"UNI EN 558-1" PASSAGE INTEGRAL 2 PIECES**  
**FLANSCHKUGELHÄHNE IN "UNI EN 558-1"**  
**VOLLER DURCHGANG ZWEITEILIGES GEHÄUSE**

ISO nbr° LRC 0160281 QMS issued by L.R.Q.A. PED nbr° COV 0212112/01 issued by L.R.V.  
ATEX nbr° 40.2003.4392 issued by B.V. ISO 15848 nbr° I-148466/1-/2 issued by TÜV

On request  
**FIRE SAFE**  
According to ISO 10497  
"ISO-FT"



**CONSTRUCTION IN ACCORDING TO:**  
**BS EN 12516-2 - ISO 14313**  
**UNI EN 558-1**

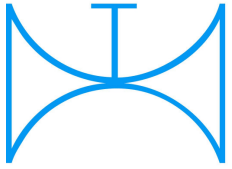
PRZEDSTAWICIEL W POLSCE:

**ARA**  
PNEUMATIK

53-012 Wrocław tel. 71 364 72 85  
ul. Wyścigowa 38 fax 71 364 72 83

[www.arapneumatik.pl](http://www.arapneumatik.pl)

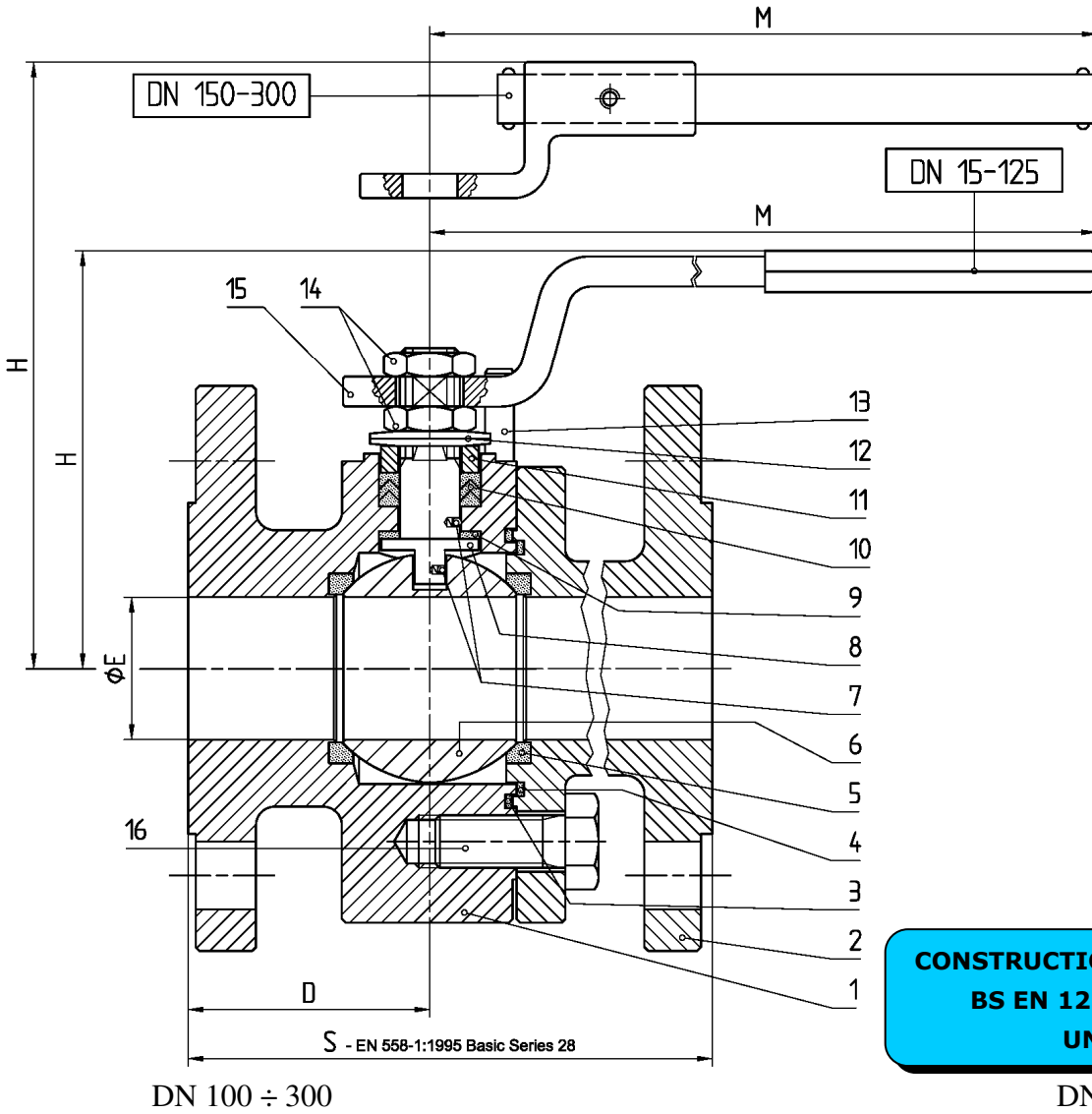




ISO 9001:2008 by L.R.  
 PED DIR. 97/23/EC by L.R.  
 ATEX DIR. 94/9/EC by B.V.  
 FIRE SAFE EXECUTION by L.R.  
 ISO 15848 by TÜV  
 ANTISTATIC DEVICE by L.R.  
 FIRE SAFE TESTED ISO 10497 by L.R.

TYPE  
**FN2**  
 PN 10 - 40

VALVOLA A SFERA "UNI EN 558-1" SPLIT BODY PASSAGGIO TOTALE  
 BALL VALVES "UNI EN 558-1" SPLIT BODY FULL BORE  
 ROBINETS A BOULE "UNI EN 558-1" PASSAGE INTEGRAL 2 PIECES  
 FLANSCHKUGELHÄHNE IN "UNI EN 558-1" VOLLER DURCHGANG ZWEIFTEILIGES GEHÄUSE



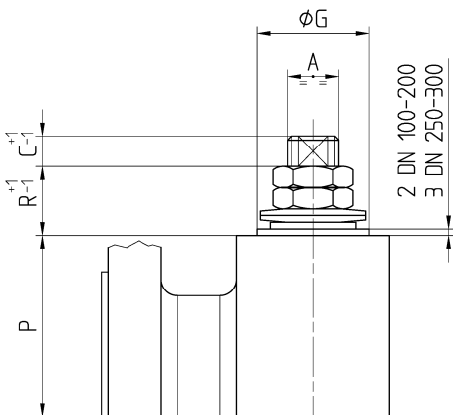
DN 200 ÷ 300  
 -CONSIGLIATO  
 RIDUTTORE MANUALE  
 -MANUAL GEAR BOX  
 SUGGESTED  
 -REDUCTEUR MANUEL  
 CONSEILLE  
 -EMPFEHLEN WIR EIN  
 HANDGETRIEBE

CONSTRUCTION IN ACCORDING TO:  
 BS EN 12516-2 - ISO 14313  
 UNI EN 558-1

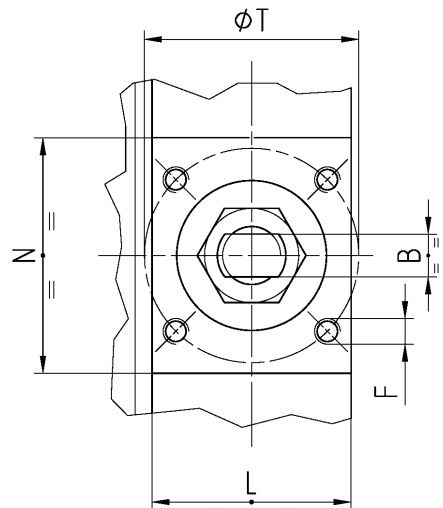
DN 100 ÷ 300

DN 100 ÷ 300

FN2/08 RIPRODUZIONE VIETATA - COPYRIGHT



• ACCOPPIAMENTO VALVOLA  
 ATTUATORE  
 • CONNECTION VALVE  
 ACTUATOR  
 • ACCOUPLEMENT ROBINET-  
 ACTIONNEUR  
 • ZUSAMMENBAU KUGELHAHN  
 ANTRIEB  
**ISO-5211**



N.	DESCRIZIONE DESCRIPTION BESCHREIBUNG	MATERIALI MATERIALS MATERIAUX WERKSTOFFE
1	CORPO BODY CORPS KÖRPER	ASTM A105 ASTM A 216 WCB ASTM A 182 F316- A479 S31600 ASTM A 351 CF8M
2	LATERALE END LATERAL GEGENGEHÄUSE	ASTM A105 ASTM A 216 WCB ASTM A 182 F316- A479 S31600 ASTM A 351 CF8M
3*	O-RING	FKM - (VITON)
4*	ANELLO SEAL ANNEAU DICHTUNGSRING	P.T.F.E.
5*	SEDE SEAT SIEGE SITZRING	P.T.F.E.
6	SFERA BALL BOULE KUGEL	ASTM A182 F304-A479 S30400 ASTM A351 CF8 ASTM A182 F316-A479 S31600 ASTM A351 CF8M
7	DISPOSITIVO ANTISTATICO ANTISTATIC DEVICE CONTACT ANTISTATIQUE ANTISTATIK VORRICHTUNG	ASTM A479 S31600
8	STELO STEM TIGE SPINDEL	ASTM A182 F304 ≥ DN 40 A479 S30400 ASTM A182 F316 A479 S31600

N.	DESCRIZIONE DESCRIPTION BESCHREIBUNG	MATERIALI MATERIALS MATERIAUX WERKSTOFFE
9*	BUSSOLA STEM SEAL JOINT TIGE UNTERE SPINDELABDICHTUNG	P.T.F.E.
10*	PACCO A "V" CHEVRON RINGS JOINT A "V" 3 FACHE DACHMANSCHETTE	P.T.F.E. / GRAFITE P.T.F.E. / GRAPHITE P.T.F.E. / GRAPHITE P.T.F.E. / GRAPHIT
11	PREMIBUSSOLA PRESSING BUSH PRESSE RONDELLE STOPFBUCHSDRUCKRING	ASTM A479 S31600
12	MOLLE A TAZZA SPRING WASHERS RONDELLES BELLEVILLE TELLERFEDERN	C72/50Cr V <sub>4</sub> ZINCATO - GALVANIZED ZINGUE - VERZINKT
13	VITE DI FERMO E FERMO PIN AND STOP PIN PLOT ET PLOT D'ARRET ANSCHLAGBOLZEN	UNI 3740 - 8.8 ZINCATO - GALVANIZED ZINGUE - VERZINKT
14	DADO - CONTRODADO NUT - LOCK NUT ECROU - CONTRE-ECROU MUTTER - KONTERMUTTER	UNI 3740 - 6S ZINCATO - GALVANIZED ZINGUE - VERZINKT
15	LEVA WRENCH LEVIER HANDHEBEL	UNI 5946 Fe 37 ZINCATO - GALVANIZED ZINGUE - VERZINKT
16	VITE SCREW VIS SCHRAUBE	UNI 3740-8.8 ZINCATO-GALVANIZED- ZINGUE-VERZINKT

\* RICAMBI CONSIGLIATI - RECOMMENDED SPARE PARTS - PIECES DE RECHANGE CONSEILLEES - ERSATZTEIL EMPFEHLUNG

## DIMENSIONI - DIMENSION - DIMENSIONS - ABMESSUNGEN

DN	15	20	25	32	40	50	65	80	100	125	150	200	250	300
<b>A</b>	10	10	12	12	16	16	22	22	30	30	42	48	56	56
<b>B</b>	6	6	8	8	10	10	14	14	18	18	28	32	36	36
<b>C</b>	7	7	10	10	10	10	12	12	16,5	16,5	19	20	20	20
<b>D</b>	49	51,5	50	51,5	59	61,5	70,5	73	85	100	144	180,5	196	237
											117	155		
<b>E</b>	15	19	25	30	38	51	64	76	101	118	152	203	254	305
<b>F</b>	M5	M5	M5	M5	M6	M6	M8	M8	M8	M10	M12	M16	M20	M20
<b>ISO</b>	F03	F03	F03	F03	F05	F05	F07	F07	F07	F10	F12	F14	F16	F16
<b>G</b>	25	25	25	25	35	35	55	55	55	70	85	100	130	130
<b>H</b>	86	88	113	119	110	120	144	152	174	188	256	294		
<b>L</b>	35	35	35	35	46,5	46,5	64,5	64,5	72	93	111	130	153	153
<b>M</b>	145	145	185	185	280	280	370	370	470	650	750	900		
<b>N</b>	58	58	58	58	72,5	72,5	90	90	70	97	108	126	153	153
<b>P</b>	33,7	36	49,3	54,8	64,8	74,8	93,5	102	99,5	119	144	183	220	258,5
<b>R</b>	7	7	9	9	10	10	11	11	26	26	34	37	45	45
<b>S</b>	130	150	160	180	200	230	290	310	350	400	480	600	730	850
<b>T</b>	36	36	36	36	50	50	70	70	70	102	125	140	165	165
<b>Kg</b>	3,1	4,1	5,4	7,3	10,7	15,5	25,3	31,4	41	67	104	175	247	300
<b>Kg</b>										52	75	133	197	230

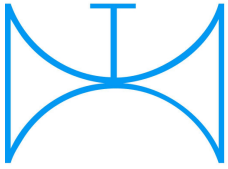
- DATI E CARATTERISTICHE SOGGETTI A VARIAZIONI SENZA PREAVVISO
- SPECIFICATIONS SUBJECT TO MODIFICATION WITHOUT PRIOR NOTICE
- TOUS DROITS DE MODIFICATION RESERVES
- KONSTRUKTIONSÄNDERUNGEN VORBEHALTEN

ASTM A 105

ASTM A 216 WCB - A 351 CF8M



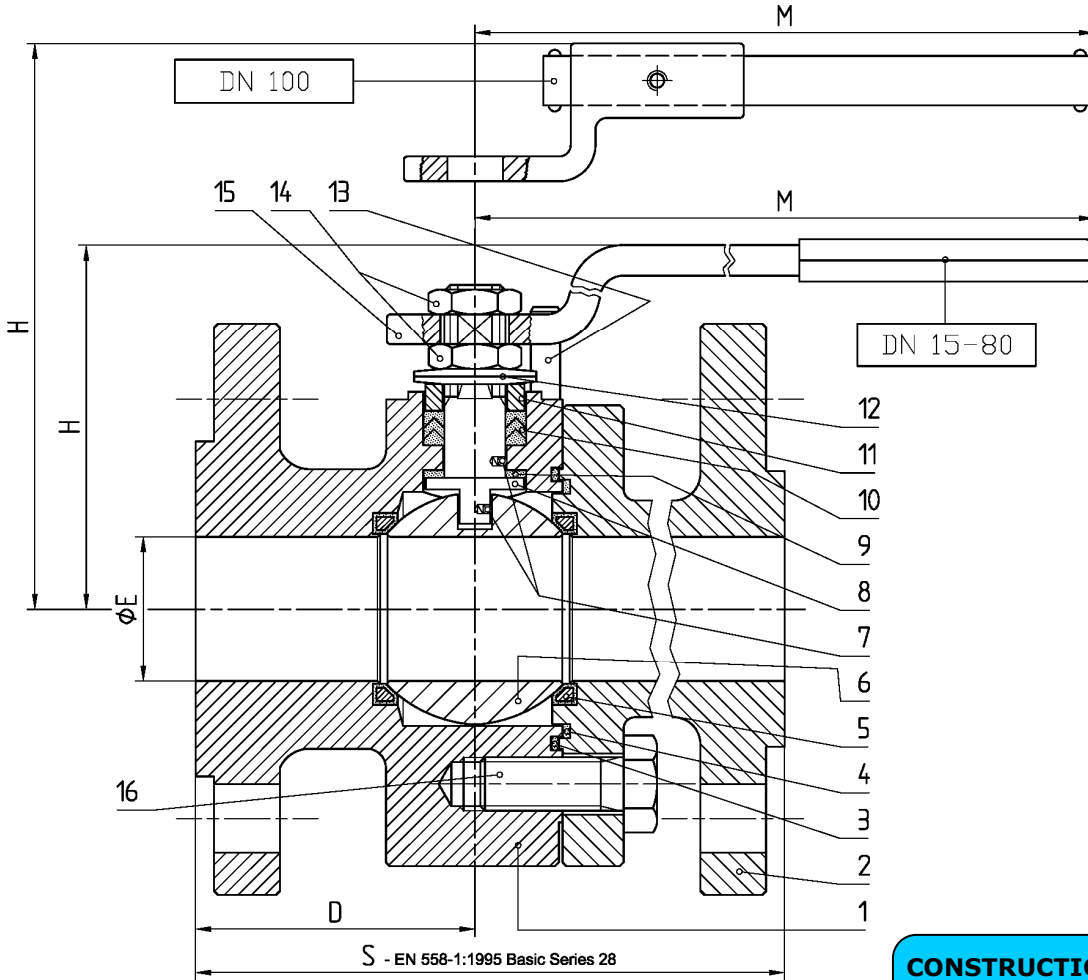
ADLER SpA - VALVOLE A SFERA  
20010 S. STEFANO TICINO (MI) ITALY V.le BORLETTI, 14 Tel. +39/02974842.11 FAX +39/0297271698  
E-mail: [adler@adlerspa.com](mailto:adler@adlerspa.com) <http://www.adlerspa.com>



ISO 9001:2008 by L.R.  
 PED DIR. 97/23/EC by L.R.  
 ATEX DIR. 94/9/EC by B.V.  
 FIRE SAFE EXECUTION by L.R.  
 ISO 15848 by TÜV  
 ANTISTATIC DEVICE by L.R.  
 FIRE SAFE TESTED ISO 10497 by L.R.

TYPE  
**FN2**  
 PN 63 - 160

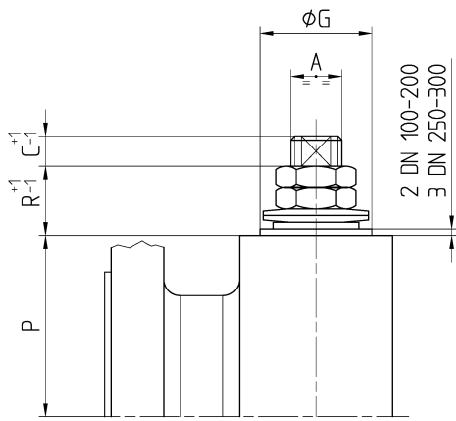
VALVOLA A SFERA "UNI EN 558-1" SPLIT BODY PASSAGGIO TOTALE  
 BALL VALVES "UNI EN 558-1" SPLIT BODY FULL BORE  
 ROBINETS A BOULE "UNI EN 558-1" PASSAGE INTEGRAL 2 PIECES  
 FLANSCHKUGELHÄHNE IN "UNI EN 558-1" VOLLER DURCHGANG ZWEIFTEILIGES GEHÄUSE



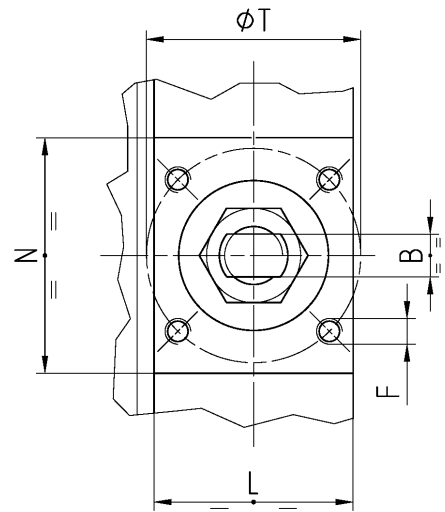
**DN 150**  
 -CONSIGLIATO  
 RIDUTTORE MANUALE  
 -MANUAL GEAR BOX  
 SUGGESTED  
 -REDUCTEUR MANUEL  
 CONSEILLE  
 -EMPFEHLEN WIR EIN  
 HANDGETRIEBE

**CONSTRUCTION IN ACCORDANCE TO:**  
 BS EN 12516-2 - ISO 14313  
 UNI EN 558-1

FN2/08 RIPRODUZIONE VIETATA - COPYRIGHT



• ACCOPPIAMENTO VALVOLA  
 ATTUATORE  
 • CONNECTION VALVE  
 ACTUATOR  
 • ACCOUPLEMENT ROBINET-  
 ACTIONNEUR  
 • ZUSAMMENBAU KUGELHAHN  
 ANTRIEB  
**ISO-5211**



N.	DESCRIZIONE DESCRIPTION BESCHREIBUNG	MATERIALI MATERIALS MATERIAUX WERKSTOFFE
1	CORPO BODY CORPS KÖRPER	ASTM A105 ASTM A 182 F316- A479 S31600
2	LATERALE END LATERAL GEGENGEHÄUSE	ASTM A105 ASTM A 182 F316- A479 S31600
3*	O-RING	FKM - (VITON)
4*	ANELLO SEAL ANNEAU DICHTUNGSRING	P.T.F.E.
5*	SEDE RINFORZATA SEAT REINFORCED SIEGE RENFORCE SITZRING VERSTÄRKT	P.T.F.E. / ASTM A 105
6	SFERA BALL BOULE KUGEL	ASTM A182 F304-A479 S30400 ASTM A351 CF8 ASTM A182 F316-A479 S31600 ASTM A351 CF8M
7	DISPOSITIVO ANTISTATICO ANTISTATIC DEVICE CONTACT ANTISTATIQUE ANTISTATIK VORRICHTUNG	ASTM A479 S31600
8	STELO STEM TIGE SPINDEL	ASTM A182 F304 A479 S30400 ≥ DN 40 ASTM A182 F316 A479 S31600

N.	DESCRIZIONE DESCRIPTION BESCHREIBUNG	MATERIALI MATERIALS MATERIAUX WERKSTOFFE
9*	BUSSOLA STEM SEAL JOINT TIGE UNTERE SPINDELABDICHTUNG	P.T.F.E.
10*	PACCO A "V" CHEVRON RINGS JOINT A "V" 3 FACHE DACHMANSCHETTE	P.T.F.E. / GRAFITE P.T.F.E. / GRAPHITE P.T.F.E. / GRAPHITE P.T.F.E. / GRAPHIT
11	PREMIBUSSOLA PRESSING BUSH PRESSE RONDELLE STOPFBUCHSDRUCKRING	ASTM A479 S31600
12	MOLLE A TAZZA SPRING WASHERS RONDELLES BELLEVILLE TELLERFEDERN	C72/50Cr V <sub>4</sub> ZINCATO - GALVANIZED ZINGUE - VERZINKT
13	VITE DI FERMO E FERMO PIN AND STOP PIN PLOT ET PLOT D'ARRET ANSCHLAGBOLZEN	UNI 3740 - 8.8 ZINCATO - GALVANIZED ZINGUE - VERZINKT
14	DADO - CONTRODADO NUT - LOCK NUT ECROU - CONTRE-ECROU MUTTER - KONTERMUTTER	UNI 3740 - 6S ZINCATO - GALVANIZED ZINGUE - VERZINKT
15	LEVA WRENCH LEVIER HANDHEBEL	UNI 5946 Fe 37 ZINCATO - GALVANIZED ZINGUE - VERZINKT
16	VITE SCREW VIS SCHRAUBE	UNI 3740-8.8 ZINCATO-GALVANIZED- ZINGUE-VERZINKT

\* RICAMBI CONSIGLIATI - RECOMMENDED SPARE PARTS - PIECES DE RECHANGE CONSEILLEES - ERSATZTEIL EMPFEHLUNG

## DIMENSIONI - DIMENSION - DIMENSIONS - ABMESSUNGEN

DN	15	20	25	40	50	50	65	65	80	80	100	150
PN	100	63÷160	63÷160	63÷100	63	100÷160	63	100	63	100÷160	63	63
AxB	12x8	12x8	16x10	22x14	22x14	22x14	30x18	30x18	30x18	30x18	42x28	48x32
C	7	7	8	16	16	12	17	17	17	17	19	19
D	52	61	61,5	81	88,5	90,5	122	122	115	115	140	174
E	15	19	25	38	51	51	64	64	76	76	101	152
F	M5	M5	M6	M8	M8	M8	M8	M8	M8	M8	M12	M16
ISO	F03	F03	F05	F07	F07	F07	F07	F07	F08	F07	F10	F14
G	25	25	35,5	55	55	55	55	55	55	55	85	100
H	105	110	100	125	135	140	161	161	170	170	190	
L	33	33	46,5	62	65	63	80	80	84	81	125	140
M	185	185	280	370	370	370	470	470	470	470	650	
N	43	65	72,5	70	79	85	82	82	80	93	109	135
P	35,5	43	55,9	66,5	76,5	76,5	94	101	97	97	111,5	163
R	14	9	10	19	19	25	20	13	26	26	34	27
S	130	150	160	200	230	230	290	290	310	310	350	480
T	36	36	50	70	70	70	70	70	70	70	125	140
~ Kg	4	5,2	6,5	15	21	21	30	30	37	37	50	110

- DATI E CARATTERISTICHE SOGGETTI A VARIAZIONI SENZA PREAVVISO
- SPECIFICATIONS SUBJECT TO MODIFICATION WITHOUT PRIOR NOTICE
- TOUS DROITS DE MODIFICATION RESERVES
- KONSTRUKTIONSÄNDERUNGEN VORBEHALTEN



ADLER SpA - VALVOLE A SFERA  
20010 S. STEFANO TICINO (MI) ITALY V.le BORLETTI, 14 Tel. +39/02974842.11 FAX +39/0297271698  
E-mail: [adler@adlerspa.com](mailto:adler@adlerspa.com) <http://www.adlerspa.com>



ISO 9001:2008 by L.R.  
 PED DIR. 97/23/EC by L.R.  
 ATEX DIR. 94/9/EC by B.V.  
 FIRE SAFE EXECUTION by L.R.  
 ISO 15848 by TÜV  
 ANTISTATIC DEVICE by L.R.  
 FIRE SAFE TESTED ISO 10497 by L.R.

TYPE  
**FN2**  
 PN 10 - 40

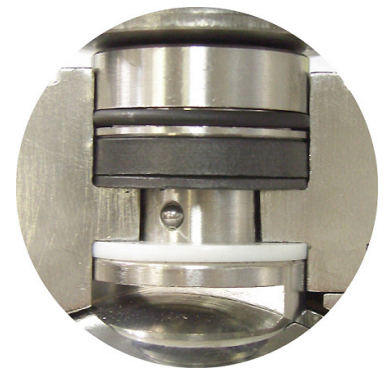
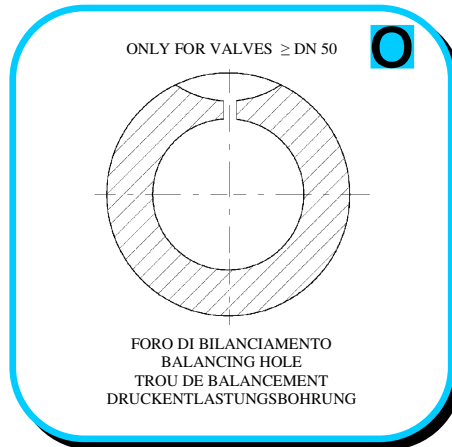
VALVOLA A SFERA "UNI EN 558-1" PASSAGGIO TOTALE  
 BALL VALVES "UNI EN 558-1" FULL BORE

ROBINETS A BOULE "UNI EN 558-1" PASSAGE INTEGRAL  
 FLANSCHKUGELHÄHNE IN "UNI EN 558-1" VOLLER DURCHGANG

▪ ESECUZIONI ▪ EXECUTIONS ▪ EXECUTIONS ▪ AUSFÜHRUNGEN



EXECUTION 4-12



EXECUTION 6 - 16

**S** STANDARD

**O** OPTIONAL

**1**

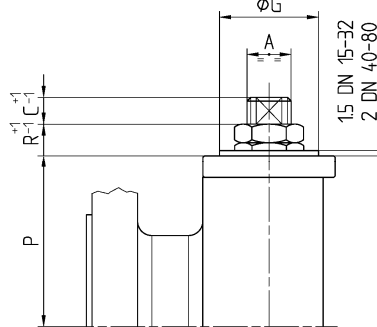
**S**

**CARBON STEEL**  
 ASTM A105  
 DN 15 ÷ 300  
 or  
 ASTM A 216 WCB  
 DN 150 ÷ 300

**2**

DN 15 ÷ 80

**S**



**3**

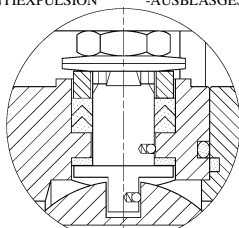
**S**

**STAINLESS STEEL**  
 ASTM A479 S31600  
 DN 15 ÷ 100  
 ASTM A351 CF8M  
 DN 125 ÷ 300

**4**

**S**

-STELO ANTI ESPULSIONE -ANTI BLOW OUT STEM  
 -TIGE ANTIEXPULSION -AUSBLASGESICHERTE WELLE

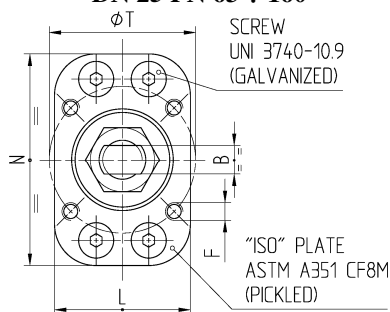


-PACCO A "V" -CHEVRON RINGS  
 -JOINT A "V" -3 FACHE DACHMANSCHETE  
 ANTISTATIC DEVICE ANTISTATIK VORRICHTUNG BS 5146

**5**

DN 15 ÷ 80 PN 10 ÷ 40  
 DN 25 PN 63 ÷ 160

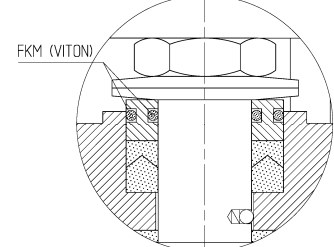
**S**



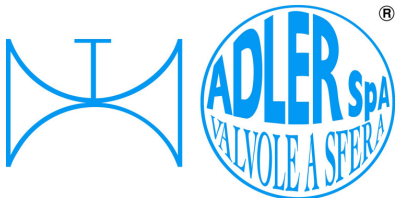
**6**

BREVETTO - PATENTED  
 00219688

**O**



-"O" RING STELO "O" RING ON STEM  
 -TIGE AVEC "O" RING  
 -"O" RING IM SPINDELBEREICH



ISO 9001:2008 by L.R.  
 PED DIR. 97/23/EC by L.R.  
 ATEX DIR. 94/9/EC by B.V.  
 FIRE SAFE EXECUTION by L.R.  
 ISO 15848 by TÜV  
 ANTISTATIC DEVICE by L.R.  
 FIRE SAFE TESTED ISO 10497 by L.R.

TYPE  
**FN2**  
 PN 10 - 40

VALVOLA A SFERA "UNI EN 558-1" PASSAGGIO TOTALE  
 BALL VALVES "UNI EN 558-1" FULL BORE

ROBINETS A BOULE "UNI EN 558-1" PASSAGE INTEGRAL  
 FLANSCHKUGELHÄHNE IN "UNI EN 558-1" VOLLER DURCHGANG

• ESECUZIONI • EXECUTIONS • EXECUTIONS • AUSFÜHRUNGEN

**7** **O**

-PROLUNGA STELO -STEM EXTENSION  
 -TIGE PROLONGEE -SPINDELVERLÄNGERUNG

**8** **O**

-PARTICOLARI INOX  
 -STAINLESS STEEL DETAILS  
 -ACCESSOIRES EN INOX  
 -EDELSTAHLTEILE

**9** **S**

-ATTACCO "ISO" -"ISO" FASTENING  
 -SYSTEM "ISO" -ANSCHLUSS "ISO"

**TESTING**

**11** **O**

-TENUTA INTEGRALE -POCKETLESS SEATS  
 -TENUCE INTEGRALE -TOTRAUMARM  
 -P.T.F.E. / R.T.F.E.

**12** **O**

**FIRE SAFE**  
 ISO 10497 "ISO-FT"  
 (BS 6755 / API 607)

**13** **S**

**BREVETTO - PATENTED**  
 00219619

-DOPPIA TENUTA -DOUBLE SEALS  
 -DOUBLE ETANCHEITE -DOPPELTE ABDICHTUNG  
 -LATERALE A BATTUTA -METAL BEATING END  
 -LATERAL AVEC BATTUE MECANIQUE  
 -METALLISCHER ANSCHLAG DES  
 GEGENGEHÄUSES

**14** **O**

VEDERE / SEE ANSI B 16.34

FLUSSO  
 FLOW

-FORO DI SCARICO NELLA SFERA  
 -OVERPRESSURE HOLE INTO BALL  
 -TROU DECOMPRESSION DANS LA BOULE  
 -ENTLASTUNGSBOHRUNG IN DER KUGEL  
 VALVOLA MONO DIREZIONALE  
 MONO-DIRECTIONAL VALVE

**15** **O**

P.T.F.E./GRAPHITE  
 P.T.F.E.

100-250

-SERVIZIO CRIOGENICO -CRYOGENIC SERVICE  
 -SERVICE CRYOGÉNIQUE  
 -TIEFTEMPERATUR SERVICE

**16** **O**

-FIRE SAFE ISO FT + "O" RING STELO  
 -FIRE SAFE ISO FT + "O" RING ON STEM  
 -SECURITE FEU ISO FT + TIGE AVEC "O" RING  
 -FEUERSICHERE AUSFÜHRUNG ISO FT +  
 "O" RING IM SPINDELBEREICH

**17** **O**

-TENUTA INTEGRALE METALLICA  
 -METALLIC POCKET LESS SEATS  
 -TENUCE INTEGRALE METALLIQUE  
 -TOTRAUMARM METALLISCH

**ISO 15848 CERTIFICATION**  
**FOR FIRE-SAFE VALVES**

**TUV**  
 TÜV

**CERTIFICATE**

This certificate with No. 11408602 is the result of tests that have been performed on a

ISO 15848  
 DN 50 ANSI 150 R.F.  
 Ball Valve

with reference to the requirements of TA LPTFT 04, 01/2002 (Einschleissbeiwertung und Beiwertung bei Luft-Druck 2,2 bar - V08 2002/04, 01/2002) Part 2.1.1.3.1.1 and with reference to PED 97/23/EC - Art. 10(2) b.

CLIENT	ADLER S.p.A. - Via della Spina - S. Sesto San Giovanni
TEST LOCATION	Laboratory C48003, Monza (MI) and ADLER Production site
TIME OF TESTING	From 09/11/2010 to 10/01/2010
TESTING VALUE	100 bar, maximum operating pressure (MOP), maximum pressure class
REQUIREMENTS	Leak-tightness criteria of shut-off valves according to TA LPTFT 04, 01/2002 (Einschleissbeiwertung und Beiwertung bei Luft-Druck 2,2 bar - V08 2002/04, 01/2002) Part 2.1.1.3.1.1 and with reference to PED 97/23/EC - Art. 10(2) b. (Leak-tightness criteria of shut-off valves according to TA LPTFT 04, 01/2002 (Einschleissbeiwertung und Beiwertung bei Luft-Druck 2,2 bar - V08 2002/04, 01/2002) Part 2.1.1.3.1.1 and with reference to PED 97/23/EC - Art. 10(2) b.)
LEAK DETECTION METHOD	Helium Leak Detection (Helium Mass Spectrometer Leak Detector) in accordance with EN ISO 10320-1:2003
PACKING MATERIAL	Graphite - PTFE/O-ring
PACKING MATERIALS COMPARISON	As per reference drawing No. 04/12/2010 Rev. 1
TEST RESULTS	Results of the test: "Success Test Report SP00000000"
QUALIFICATION	The described valve shut-off valve system satisfies the TA LPTFT 04, 01/2002 (Einschleissbeiwertung und Beiwertung bei Luft-Druck 2,2 bar - V08 2002/04, 01/2002) Part 2.1.1.3.1.1 and with reference to PED 97/23/EC - Art. 10(2) b. (Leak-tightness criteria of shut-off valves according to TA LPTFT 04, 01/2002 (Einschleissbeiwertung und Beiwertung bei Luft-Druck 2,2 bar - V08 2002/04, 01/2002) Part 2.1.1.3.1.1 and with reference to PED 97/23/EC - Art. 10(2) b.)

IMPORTANT!  
 This certificate must be obtained by the CLIENT Test Report SP00000000 and the order reference: 0201/10

LOCATION: MILANO 02000009

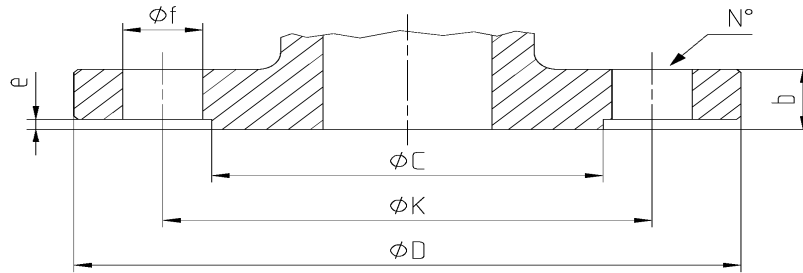
ADLER S.p.A. **TUV**

FN2/08 RIPRODUZIONE VIETATA - COPYRIGHT



**DIMENSIONI FLANGE UNI EN 1092-1**  
**FLANGE DIMENSION UNI EN 1092-1**  
**DIMENSIONS BRIDES UNI EN 1092-1**  
**FLANSCHANSCHLUSSMASSE UNI EN 1092-1**

**TABLE**  
**03**



DN	Ref.	10	15	20	25	32	40	50	65	80	100	125	150	200	250	300	
PN 10	D	90	95	105	115	140	150	165	185	200	220	250	285	340	395	445	
	C	40	45	58	68	78	88	102	122	138	158	188	212	268	320	370	
	K	60	65	75	85	100	110	125	145	160	180	210	240	295	350	400	
	N°	4	4	4	4	4	4	4	4	4*	8	8	8	8	8	12	12
	f	14	14	14	14	14	18	18	18	18	18	18	18	22	22	22	22
	b	16	16	18	18	18	18	18	18	18	20	20	22	22	24	26	26
	e	2	2	2	2	2	2	3	3	3	3	3	3	3	3	3	4
PN 16	D	90	95	105	115	140	150	165	185	200	220	250	285	340	405	460	
	C	40	45	58	68	78	88	102	122	138	158	188	212	268	320	378	
	K	60	65	75	85	100	110	125	145	160	180	210	240	295	355	410	
	N°	4	4	4	4	4	4	4	4	4*	8	8	8	12	12	12	
	F	14	14	14	14	14	18	18	18	18	18	18	18	22	22	26	26
	b	16	16	18	18	18	18	18	18	18	20	20	22	22	24	26	28
	e	2	2	2	2	2	2	3	3	3	3	3	3	3	3	3	4
PN 25	D	90	95	105	115	140	150	165	185	200	235	270	300	360	425	485	
	C	40	45	58	68	78	88	102	122	138	162	188	218	278	335	395	
	K	60	65	75	85	100	110	125	145	160	190	220	250	310	370	430	
	N°	4	4	4	4	4	4	4	4	8	8	8	8	12	12	16	
	f	14	14	14	14	14	18	18	18	18	22	26	26	26	30	30	
	b	16	16	18	18	18	18	20	22	24	24	26	28	30	32	34	
	e	2	2	2	2	2	2	3	3	3	3	3	3	3	3	4	
PN 40	D	90	95	105	115	140	150	165	185	200	235	270	300	375	450	515	
	C	40	45	58	68	78	88	102	122	138	162	188	218	285	345	410	
	K	60	65	75	85	100	110	125	145	160	190	220	250	320	385	450	
	N°	4	4	4	4	4	4	4	4	8	8	8	8	12	12	16	
	f	14	14	14	14	14	18	18	18	18	22	26	26	30	33	33	
	b	16	16	18	18	18	18	20	22	24	24	26	28	34	38	42	
	e	2	2	2	2	2	2	3	3	3	3	3	3	3	3	4	
PN 63	D	100	105	130	140	155	170	180	205	215	250	295	345	415	470	530	
	C	40	45	58	68	75	88	102	122	138	162	188	218	285	345	410	
	K	70	75	90	100	110	125	135	160	170	200	240	280	345	400	460	
	N°	4	4	4	4	4	4	4	8	8	8	8	8	12	12	16	
	f	14	14	18	18	22	22	22	22	22	26	30	33	36	36	36	
	b	20	20	22	24	24	26	26	26	28	30	34	36	42	46	52	
	e	2	2	2	2	2	2	3	3	3	3	3	3	3	3	4	
PN 100	D	100	105	130	140	155	170	195	220	230	265	315	355	430	505	585	
	C	40	45	58	68	75	88	102	122	138	162	188	218	285	345	410	
	K	70	75	90	100	110	125	145	170	180	210	250	290	360	430	500	
	N°	4	4	4	4	4	4	4	8	8	8	8	12	12	12	16	
	f	14	14	18	18	22	22	26	26	26	30	33	33	36	39	42	
	b	20	20	22	24	24	26	28	30	32	36	40	44	52	60	68	
	e	2	2	2	2	2	2	3	3	3	3	3	3	3	3	4	
PN 160	D	100	105	130	140	155	170	195	220	230	265	315	355	430	515	585	
	C	40	45	58	68	75	88	102	122	138	162	188	218	285	345	410	
	K	70	75	90	100	110	125	145	170	180	210	250	290	360	430	500	
	N°	4	4	4	4	4	4	4	8	8	8	8	12	12	12	16	
	f	14	14	18	18	22	22	26	26	26	30	33	33	36	42	42	
	b	20	20	22	24	26	28	30	34	36	40	44	50	60	68	78	
	e	2	2	2	2	2	2	3	3	3	3	3	3	3	3	4	

Tab-03/08 RIPRODUZIONE VIETATA - COPYRIGHT



ADLER SpA - VALVOLE A SFERA  
 20010 S. STEFANO TICINO (MI) ITALY V.le BORLETTI, 14 Tel. +39/02974842.11 FAX +39/0297271698  
 E-mail: [adler@adlerspa.com](mailto:adler@adlerspa.com) <http://www.adlerspa.com>