

ISO 9001:2008 by L.R.  
PED DIR. 97/23/EC by L.R.  
ATEX DIR. 94/9/EC by B.V.  
FIRE SAFE EXECUTION by L.R.  
ISO 15848 by TÜV  
ANTISTATIC DEVICE by L.R.  
FIRE SAFE TESTED ISO 10497 by L.R.

[WWW.ADLERSPA.COM](http://WWW.ADLERSPA.COM)

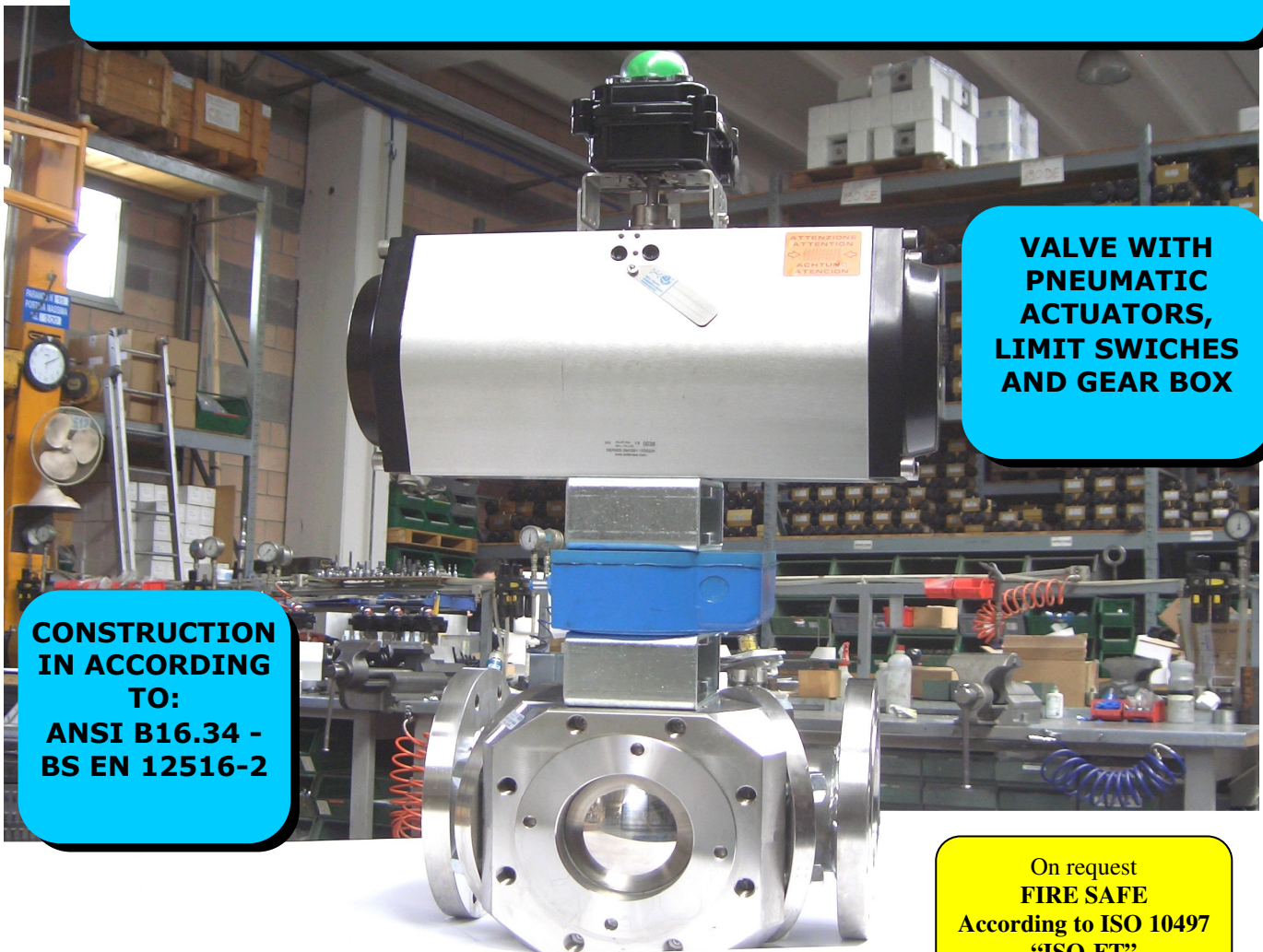
TYPE

**FV4**

PN 10 ÷ 40  
ANSI 150

**BALL VALVES "3 WAY WAFER" FULL BORE 120°  
ROBINETS A BOULE "3 VOIES WAFER"  
PASSAGE INTEGRAL 120°  
KUGELHÄHNE "3 WEGE KOMPAKTHAHN"  
VOLLER DURCHGANG 120°**

ISO nbr° LRC 0160281 QMS issued by L.R.Q.A. PED nbr° COV 0212112/01 issued by L.R.V.  
ATEX nbr° 40.2003.4392 issued by B.V. ISO 15848 nbr° I-148466/1-/2 issued by TÜV



**VALVE WITH  
PNEUMATIC  
ACTUATORS,  
LIMIT SWITCHES  
AND GEAR BOX**

**CONSTRUCTION  
IN ACCORDING  
TO:  
ANSI B16.34 -  
BS EN 12516-2**

On request  
**FIRE SAFE**  
According to ISO 10497  
"ISO-FT"

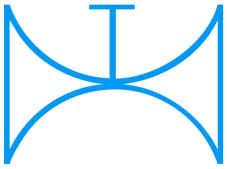
PRZEDSTAWICIEL W POLSCE:

**ARA**  
PNEUMATIK

53-012 Wrocław tel. 71 364 72 85  
ul. Wyścigowa 38 fax 71 364 72 83

[www.arapneumatik.pl](http://www.arapneumatik.pl)

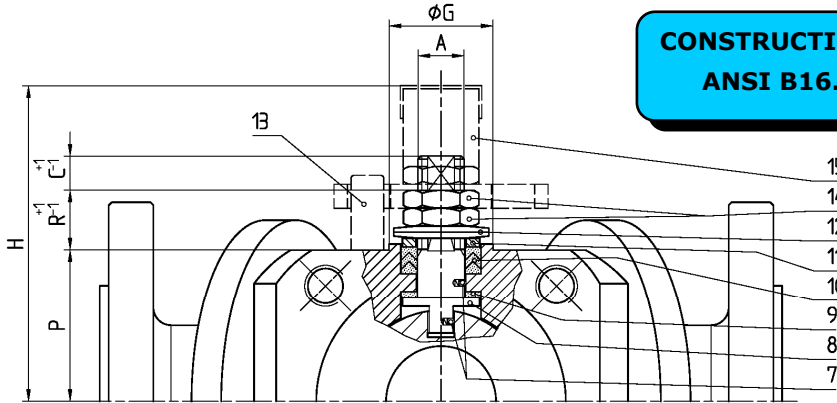




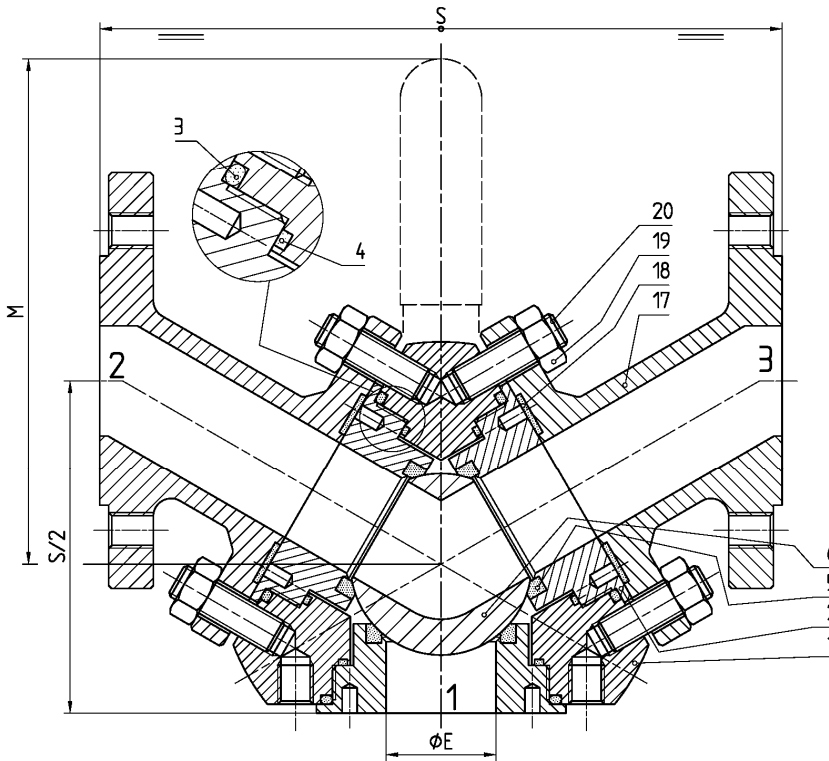
**ISO 9001:2008 by L.R.**  
**PED DIR. 97/23/EC by L.R.**  
**ATEX DIR. 94/9/EC by B.V.**  
**FIRE SAFE EXECUTION by L.R.**  
**ISO 15848 by TÜV**  
**ANTISTATIC DEVICE by L.R.**  
**FIRE SAFE TESTED ISO 10497 by L.R.**

**TYPE**  
**FV4**  
**PN 10 ÷ 40**  
**ANSI 150**

**VALVOLA A SFERA "3 VIE" PASSAGGIO TOTALE 90°**  
**BALL VALVES "3 WAY" FULL BORE 90°**  
**ROBINETS A BOULE "3 VOIES" PASSAGE INTEGRAL 90°**  
**KUGELHÄHNE "3 WEGE" VOLLER DURCHGANG 90°**

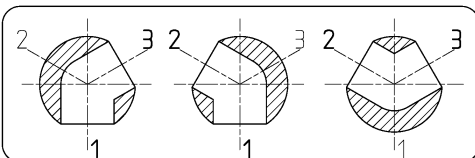


**CONSTRUCTION IN ACCORDING TO:**  
**ANSI B16.34 - BS EN 12516-2**



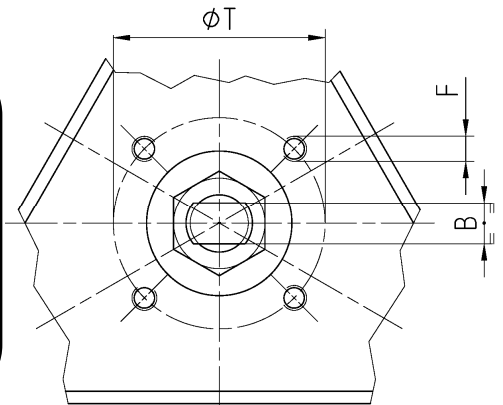
**DN 150 ÷ 200**  
**-CONSIGLIATO**  
**RIDUTTORE MANUALE**  
**-MANUAL GEAR BOX**  
**SUGGESTED**  
**-REDUCTEUR MANUEL**  
**CONSEILLE**  
**-EMPFEHLEN WIR EIN**  
**HANDGETRIEBE**

**POSIZIONI OTTENIBILI**  
**OBTAINABLE POSITIONS**  
**POSITIONS OBTENABLES**  
**MÖGLICHE STELLUNGEN**



- **ACCOPPIAMENTO VALVOLA ATTUATORE**
- **CONNECTION VALVE ACTUATOR**
- **ACCOUPEMENT ROBINET-ACTIONNEUR**
- **ZUSAMMENBAU KUGELHAHN ANTRIEB**

**ISO-5211**



N.	DESCRIZIONE DESCRIPTION BESCHREIBUNG	MATERIALI MATERIALS MATERIAUX WERKSTOFFE
1	CORPO BODY CORPS KÖRPER	ASTM A105 ASTM A 182 F316- A479 S31600 ASTM A351 CF8M
2	GHIERA INSERT EMBOUT GEWINDED RUCKRING	ASTM A105 ASTM A 182 F316- A479 S31600 ASTM A351 CF8M
3*	O-RING	FKM - (VITON)
4*	ANELLO SEAL ANNEAU DICHTUNGSRING	P.T.F.E.
5*	SEDE SEAT SIEGE SITZRING	P.T.F.E. / R.P.T.F.E. (OPTIONAL)
6	SFERA BALL BOULE KUGEL	ASTM A182 F304-A479 S30400 ASTM A351 CF8 ≥ DN 40 ASTM A182 F316-A479 S31600 ASTM A351 CF8M
7	DISPOSITIVO ANTISTATICO ANTISTATIC DEVICE CONTACT ANTISTATIQUE ANTISTATIK VORRICHTUNG	ASTM A479 S31600
8	STELO STEM TIGE SPINDEL	ASTM A182 F304 A479 S30400 ≥ DN 40 ASTM A182 F316 A479 S31600
9*	BUSSOLA STEM SEAL JOINT TIGE UNTERE SPINDEL ABDICHTUNG	P.T.F.E.
10*	PACCO A "V" CHEVRON RINGS JOINT A "V" 3 FACHE DACHMANSCHETTE	P.T.F.E. / GRAFITE P.T.F.E. / GRAPHITE P.T.F.E. / GRAPHITE P.T.F.E. / GRAPHIT

N.	DESCRIZIONE DESCRIPTION BESCHREIBUNG	MATERIALI MATERIALS MATERIAUX WERKSTOFFE
11	PREMIBUSSOLA PRESSING BUSH PRESSE RONDELLE STOPFBUCHSDRUCKRING	ASTM A479 S31600
12	MOLLE A TAZZA SPRING WASHERS RONDELLES BELLEVILLE TELLERFEDERN	C72/50Cr V <sub>4</sub> ZINCATO - GALVANIZED ZINGUE - VERZINKT
13	VITE DI FERMO E FERMO PIN AND STOP PIN PLOT ET PLOT D'ARRET ANSCHLAGBOLZEN	UNI 3740 - 8.8 ZINCATO - GALVANIZED ZINGUE - VERZINKT
14	DADO - CONTRODADO NUT - LOCK NUT ECROU - CONTRE-ECROU MUTTER - KONTERMUTTER	UNI 3740 - 6S ZINCATO - GALVANIZED ZINGUE - VERZINKT
15	LEVA WRENCH LEVIER HANDHEBEL	UNI 5946 Fe 37 ZINCATO - GALVANIZED ZINGUE - VERZINKT
16		
17	LATERALE END LATERAL GEGENGEHÄUSE	ASTM A105 ASTM A 182 F316- A479 S31600 ASTM A351 CF8M
18*	GUARNIZIONE GASKET JOINT DICHRING	P.T.F.E.
19	TIRANTE BOLT BOULON ZUGBOLZEN	ASTM A 193 B7 ZINCATO - GALVANIZED ZINGUE - VERZINKT
20	DADO NUT ECROU MUTTEI	UNI 3740 - 6S ZINCATO - GALVANIZED ZINGUE - VERZINKT

\* RICAMBI CONSIGLIATI - RECOMMENDED SPARE PARTS - PIÉCES DE RECHANGE CONSEILLÉES - ERSATZTEIL EMPFEHLUNG

## DIMENSIONI - DIMENSION - DIMENSIONS - ABMESSUNGEN

DN	10	15	20	25	32	40	50	65	80	100	125	150	200	250	300
A						16	16	22	22	30	30	42	48		
B						10	10	14	14	18	18	28	32		
C						10	10	12	12	17	17	19	20		
E						38	51	64	76	101	118	152	203		
F						M6	M6	M8	M8	M10	M10	M12	M16		
ISO						F05	F05	F07	F07	F10	F10	F12	F14		
G						35	35	55	55	70	70	85	100		
H						109	119	143	152	172	185	253	295		
M						280	280	370	370	470	650	750	900		
P						55	65	82	90,5	99,5	113	144	183		
R						20	20	23	23	26	26	34	36		
S						200	230	290	310	350	400	550	600		
T						50	50	70	70	102	102	125	140		
~Kg						19	27	39	50	63	82	150	225		
~Kg												100	162		

VEDERE TYPE  
SEE FUTZ 4  
VOIR PN 10 ÷ 16  
SIEHE ANSI 150

DN 40 ÷ 125  
- LEVA SINGOLA  
- SINGLE WRENCH  
- LEVIER UNIQUE  
- STANDARDHANDHEBEL  
DN 150 ÷ 200  
- LEVA DOPPIA  
- DUAL WRENCH  
- LEVIER DOUBLE  
- DOPPELHANDHEBEL

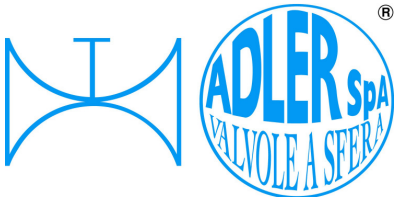
- DATI E CARATTERISTICHE SOGGETTI A VARIAZIONI SENZA PREAVVISO
- SPECIFICATIONS SUBJECT TO MODIFICATION WITHOUT PRIOR NOTICE
- TOUS DROITS DE MODIFICATION RESERVES
- KONSTRUKTIONSÄNDERUNGEN VORBEHALTEN

ASTM A105 ASTM / A 182 F316- A479 S31600

ASTM A351 CF8M



ADLER SpA - VALVOLE A SFERA  
20010 S. STEFANO TICINO (MI) ITALY V.le BORLETTI, 14 Tel. +39/02974842.11 FAX +39/0297271698  
E-mail: [adler@adlerspa.com](mailto:adler@adlerspa.com) <http://www.adlerspa.com>



ISO 9001:2008 by L.R.  
 PED DIR. 97/23/EC by L.R.  
 ATEX DIR. 94/9/EC by B.V.  
 FIRE SAFE EXECUTION by L.R.  
 ISO 15848 by TÜV  
 ANTISTATIC DEVICE by L.R.  
 FIRE SAFE TESTED ISO 10497 by L.R.

TYPE  
**FV4**  
 PN 10 ÷ 40  
 ANSI 150

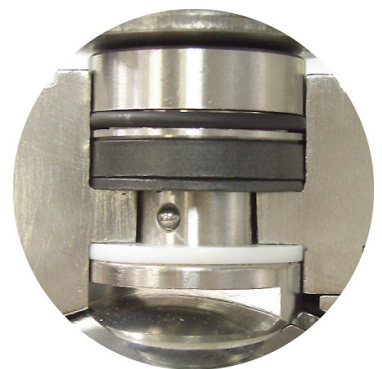
VALVOLA A SFERA "3 VIE" PASSAGGIO TOTALE 90°  
 BALL VALVES "3 WAY" FULL BORE 90°

ROBINETS A BOULE "3 VOIES" PASSAGE INTEGRAL 90°  
 KUGELHÄHNE "3 WEGE VOLLER DURCHGANG 90°

▪ ESECUZIONI ▪ EXECUTIONS ▪ EXECUTIONS AUSFÜHRUNGEN



EXECUTION 4 - 12



EXECUTION 6 - 16

**S** STANDARD

**O** OPTIONAL

**1** **S**

DN 40 ÷ 125

-MONTAGGIO VITI - SCREW ASSEMBLING  
 -MONTAGE VIS - EINBAU MIT SCHRAUBEN

**1** **S**

DN 150 - 200

-MONTAGGIO VITI - SCREW ASSEMBLING  
 -MONTAGE VIS - EINBAU MIT SCHRAUBEN

**3** **S**

LEVA CON INDICATORE DI FLUSSO  
 WRENCH WITH FLOW INDICATOR

2 3 1  
 FLOW INDICATOR

**4** **S**

-STELO ANTI ESPULSIONE - ANTI BLOW OUT STEM  
 -TIGE ANTIEXPULSION - AUSBLASGESICHERTE WELLE

-PACCO A "V" - CHEVRON RINGS  
 -JOINT A "V" - 3 FACHE DACHMANSCHETE  
 ANTISTATIC DEVICE ANTISTATIK VORRICHTUNG  
 BS 5146

**5** **S**

DN 150 - 200

2 3 1  
 ADLER ADLER

-LEVA DOPPIA - DUAL WRENCH  
 -LEVIER DOUBLE - DOPPELHANDHEBEL

**6** **O**

BREVETTO - PATENTED  
 00219688

FKM (VITON)

-"O" RING STELO "O" RING ON STEM  
 -TIGE AVEC "O" RING  
 -"O" RING IM SPINDELBEREICH



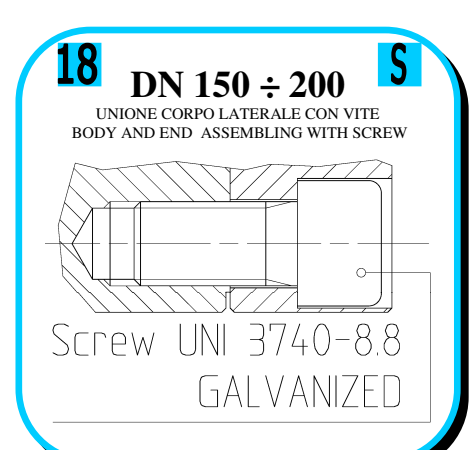
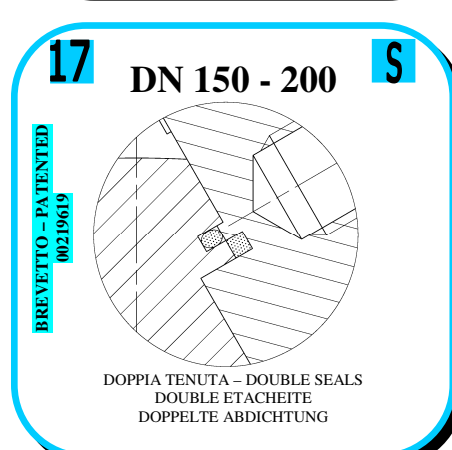
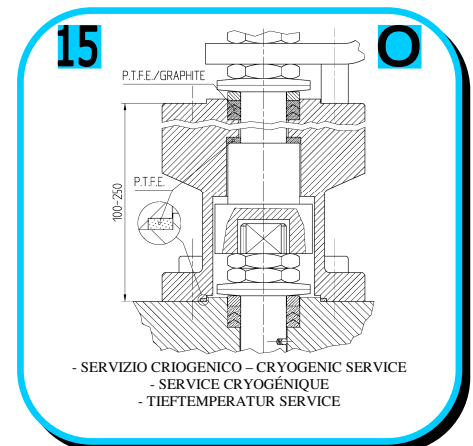
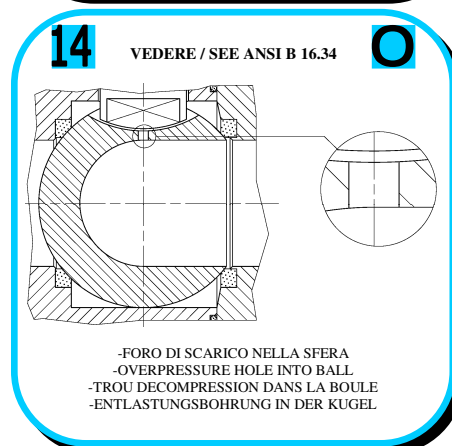
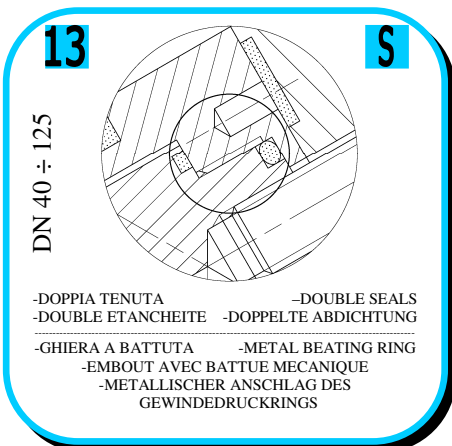
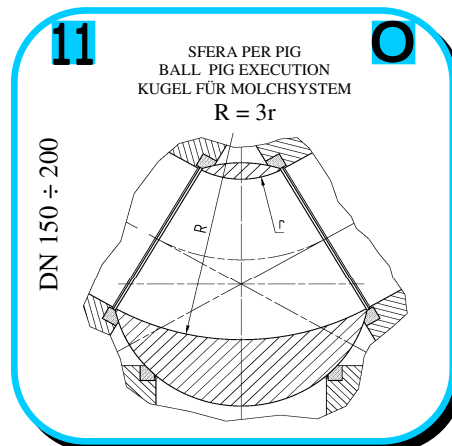
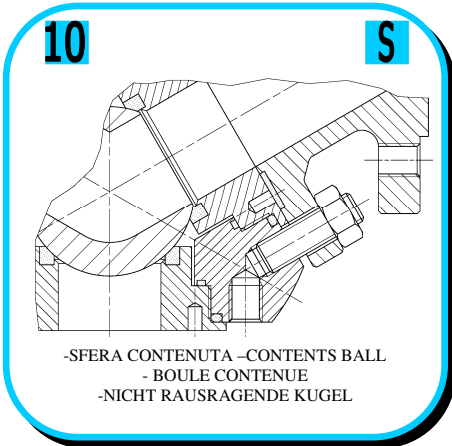
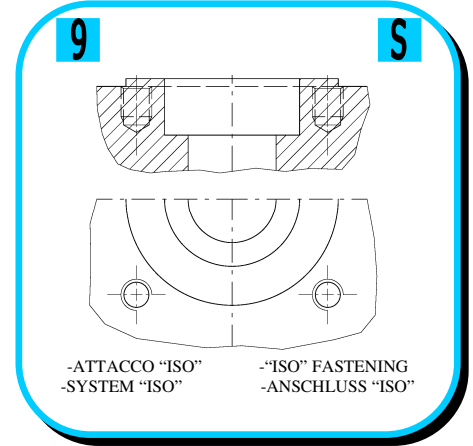
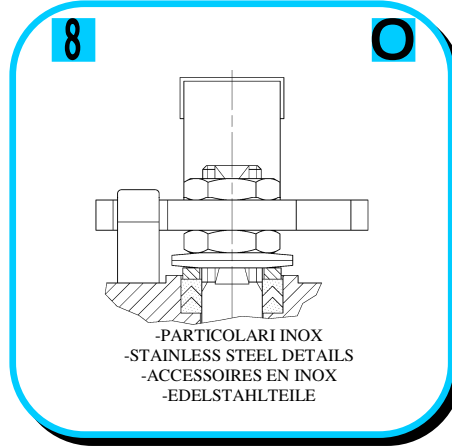
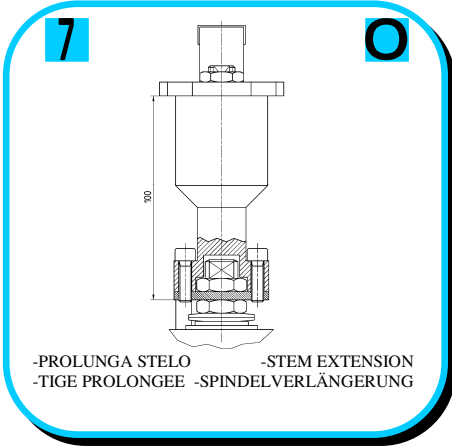
ISO 9001:2008 by L.R.  
 PED DIR. 97/23/EC by L.R.  
 ATEX DIR. 94/9/EC by B.V.  
 FIRE SAFE EXECUTION by L.R.  
 ISO 15848 by TÜV  
 ANTISTATIC DEVICE by L.R.  
 FIRE SAFE TESTED ISO 10497 by L.R.

TYPE  
**FV4**  
 PN 10 ÷ 40  
 ANSI 150

VALVOLA A SFERA "3 VIE" PASSAGGIO TOTALE 90°  
 BALL VALVES "3 WAY" FULL BORE 90°

ROBINETS A BOULE "3 VOIES" PASSAGE INTEGRAL 90°  
 KUGELHÄHNE "3 WEGE VOLLER DURCHGANG 90°

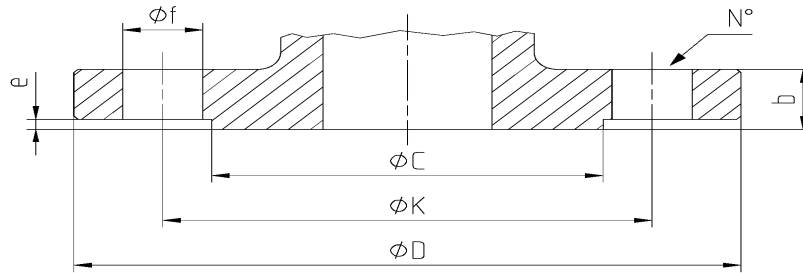
• ESECUZIONI • EXECUTIONS • EXECUTIONS • AUSFÜHRUNGEN





**DIMENSIONI FLANGE UNI EN 1092-1**  
**FLANGE DIMENSION UNI EN 1092-1**  
**DIMENSIONS BRIDES UNI EN 1092-1**  
**FLANSCHANSCHLUSSMASSEE UNI EN 1092-1**

**TABLE 03**



DN	Ref.	10	15	20	25	32	40	50	65	80	100	125	150	200	250	300
PN 10	D						150	165	185	200	220	250	285	340		
	C						88	102	122	138	158	188	212	268		
	K						110	125	145	160	180	210	240	295		
	N°						4	4	4*	8	8	8	8	8		
	f						18	18	18	18	18	18	22	22		
	b						18	18	18	20	20	22	22	24		
	e						3	3	3	3	3	3	3	3		
PN 16	D						150	165	185	200	220	250	285	340		
	C						88	102	122	138	158	188	212	268		
	K						110	125	145	160	180	210	240	295		
	N°						4	4	4*	8	8	8	8	12		
	F						18	18	18	18	18	18	22	22		
	b						18	18	18	20	20	22	22	24		
	e						3	3	3	3	3	3	3	3		

**ANSI B16.5 (OPTIONAL)**

DN	Ref.	1/2"	3/4"	1"	1 1/4"	1 1/2"	2"	2 1/2"	3"	4"	5"	6"	8"	10"	12"
ANSI 150 RF	D					127	152.4	177.8	190.5	228.6	254	279.4	342.9		
	C					92	104.7	127	157.3	185.7	215.9	269.8	269.8		
	K					98.6	120.7	139.7	152.4	190.5	215.9	241.3	298.5		
	N°					4	4	4	4	8	8	8	8		
	f					19.1	19.1	19.1	19.1	19.1	22.4	22.4	22.4		
	b					17.6	19.1	22.4	23.9	23.9	23.9	25.4	28.5		
	e					1.6	1.6	1.6	1.6	1.6	1.6	1.6	1.6		



PRZEDSTAWICIEL W POLSCE:

**ARA**  
**PNEUMATIK**

53-012 Wrocław tel. 71 364 72 85  
 ul. Wyścigowa 38 fax 71 364 72 83

[www.arapneumatik.pl](http://www.arapneumatik.pl)



ADLER SpA - VALVOLE A SFERA  
 20010 S. STEFANO TICINO (MI) ITALY V.le BORLETTI, 14 Tel. +39/02974842.11 FAX +39/0297271698  
 E-mail: [adler@adlerspa.com](mailto:adler@adlerspa.com) <http://www.adlerspa.com>