

ISO 9001:2008 by L.R.  
PED DIR. 97/23/EC by L.R.  
ATEX DIR. 94/9/EC by B.V.  
FIRE SAFE EXECUTION by L.R.  
ISO 15848 by TÜV  
ANTISTATIC DEVICE by L.R.  
FIRE SAFE TESTED ISO 10497 by L.R.

[WWW.ADLERSPA.COM](http://WWW.ADLERSPA.COM)

TYPE  
**FX2**  
PN 10 ÷ 40  
ANSI 150 ÷ 300

## BALL VALVES

"WAFER TYPE" FULL BORE SPLIT BODY WITH HEATING JACKET

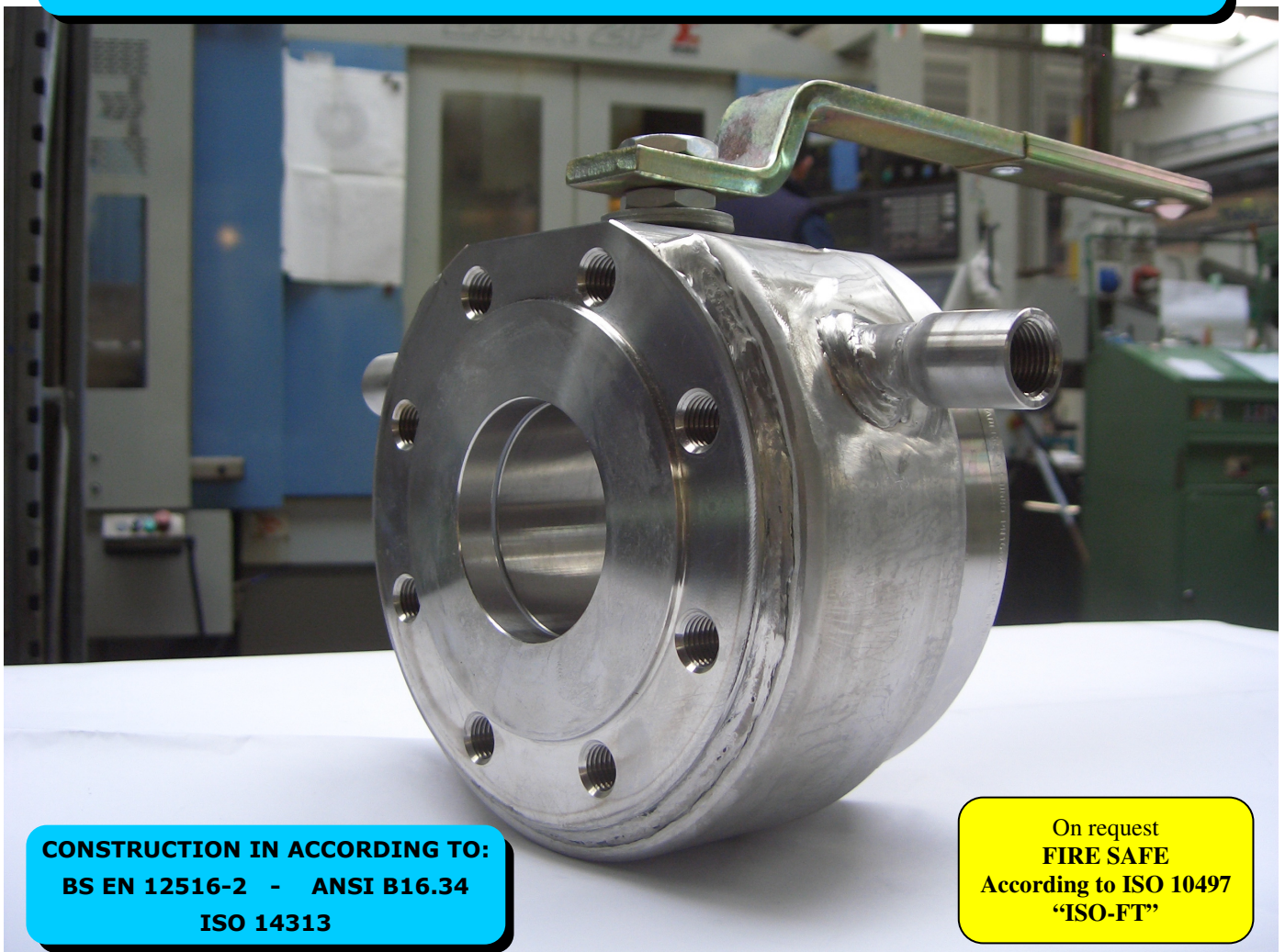
## ROBINETS A BOULE

"WAFER" PASSAGE INTEGRAL 2 PIECES AVEC ENVELOPPE

## FLANSCHKUGELHÄHNE IN "KOMPAKTBAUWEISE"

VOLLER DURCHGANG ZWEITEILIGES GEHÄUSE MIT HEIZMANTEL

ISO nbr° LRC 0160281 QMS issued by L.R.Q.A. PED nbr° COV 0212112/01 issued by L.R.V.  
ATEX nbr° 40.2003.4392 issued by B.V. ISO 15848 nbr° I-148466/1-/2 issued by TÜV  
AD-MERKBLATT HP0 EN ISO 3834-3 report n. 179025 issued by TÜV



CONSTRUCTION IN ACCORDING TO:  
BS EN 12516-2 - ANSI B16.34  
ISO 14313

On request  
FIRE SAFE  
According to ISO 10497  
"ISO-FT"

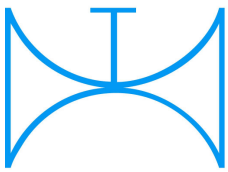
PRZEDSTAWICIEL W POLSCE:

**ARA**  
PNEUMATIK

53-012 Wrocław tel. 71 364 72 85  
ul. Wyścigowa 38 fax 71 364 72 83

[www.arapneumatik.pl](http://www.arapneumatik.pl)

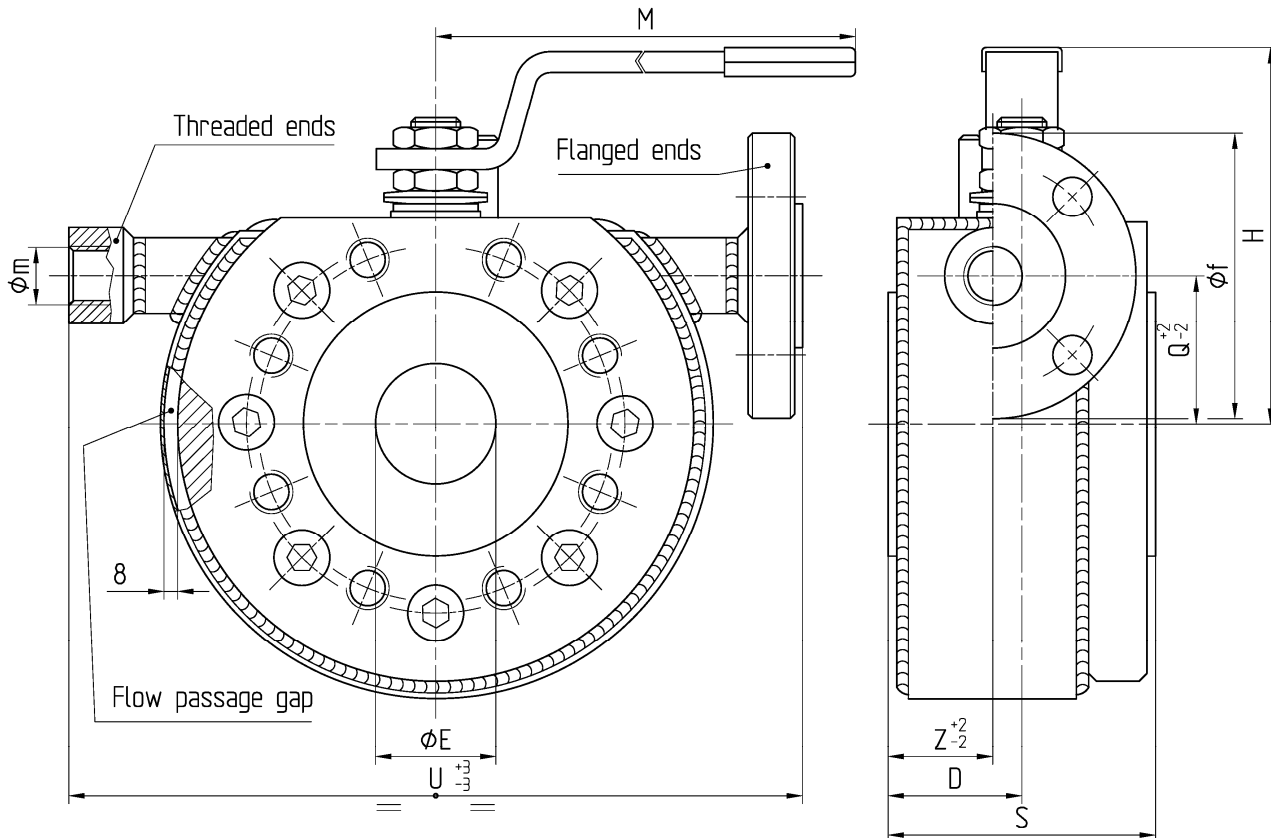




ISO 9001:2008 by L.R.  
 PED DIR. 97/23/EC by L.R.  
 ATEX DIR. 94/9/EC by B.V.  
 FIRE SAFE EXECUTION by L.R.  
 ISO 15848 by TÜV  
 ANTISTATIC DEVICE by L.R.  
 FIRE SAFE TESTED ISO 10497 by L.R.

TYPE  
**FX2**  
 PN 10 ÷ 40  
 ANSI 150 ÷ 300

VALVOLA A SFERA "CORPO PIATTO" SPLIT BODY PASSAGGIO TOTALE CON CAMICIA DI RISCALDAMENTO  
 BALL VALVES "WAFER TYPE" SPLIT BODY FULL BORE WITH HEATING JACKET  
 ROBINETS A BOULE "WAFER" PASSAGE INTEGRAL 2 PIECES AVEC ENVELOPPE  
 FLANSCHKUGELHÄHNE IN "KOMPAKTBAUWEISE" VOLLER DURCHGANG ZWEITEILIGES GEHÄUSE MIT HEIZMANTEL



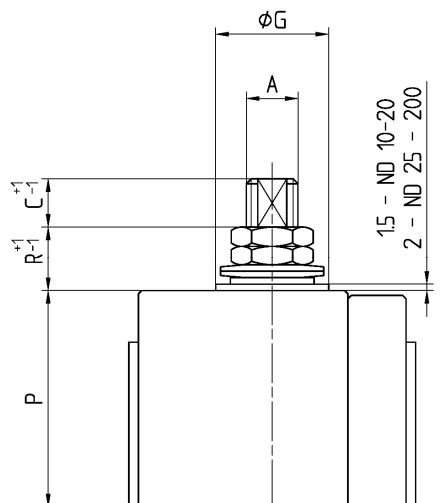
Valvola base FA2  
 Main Ball Valve FA2

Pressione massima di lavoro nelle camicie 10 bar  
 Maximum working pressure for jacket 10 bar

CONSTRUCTION IN ACCORDING TO:  
 BS EN 12516-2 - ANSI B 16.34  
 ISO 14313

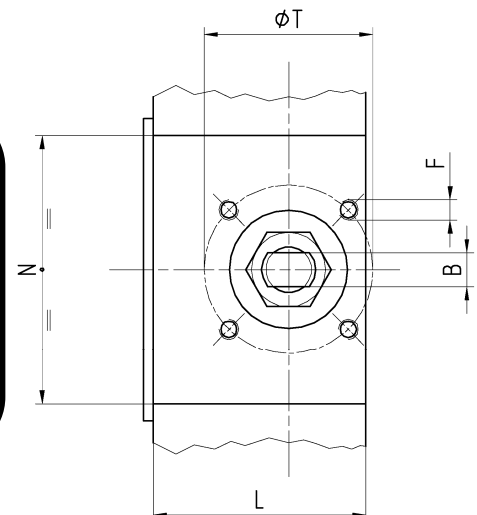
DN 200  
 -CONSIGLIATO  
 RIDUTTORE MANUALE  
 -MANUAL GEAR BOX  
 SUGGESTED  
 -REDUCTEUR MANUEL  
 CONSEILLE  
 -EMPFEHLEN WIR EIN  
 HANDGETRIEBE

Materiale camicia Jacket material	CARBON STEEL (STANDARD) STAINLESS STEEL (OPTIONAL)
--------------------------------------	---



- ACCOPPIAMENTO VALVOLA  
ATTUATORE
- CONNECTION VALVE  
ACTUATOR
- ACCOUPLEMENT ROBINET-  
ACTIONNEUR
- ZUSAMMENBAU KUGELHAHN  
ANTRIEB

**ISO-5211**



N.	DESCRIZIONE DESCRIPTION BESCHREIBUNG	MATERIALI MATERIALS MATERIAUX WERKSTOFFE
1	CORPO BODY CORPS KÖRPER	ASTM A105 ASTM A 182 F316- A479 S31600 ASTM A 182 F304- A479 S30400
2	LATERALE END LATERAL GEGENGEHÄUSE	ASTM A105 ASTM A 182 F316- A479 S31600 ASTM A 182 F304- A479 S30400
3*	O-RING	FKM - (VITON)
4*	ANELLO SEAL ANNEAU DICHTUNGSRING	P.T.F.E.
5*	SEDE SEAT SIEGE SITZRING	P.T.F.E. + 15% FIBERGLASS
6	SFERA BALL BOULE KUGEL	ASTM A182 F304-A479 S30400 ASTM A351 CF8 ASTM A182 F316-A479 S31600 ASTM A351 CF8M
7	DISPOSITIVO ANTISTATICO ANTISTATIC DEVICE CONTACT ANTISTATIQUE ANTISTATIK VORRICHTUNG	ASTM A479 S31600
8	STELO STEM TIGE SPINDEL	ASTM A182 F304 A479 S30400 ≥ DN 40 ASTM A182 F316 A479 S31600

N.	DESCRIZIONE DESCRIPTION BESCHREIBUNG	MATERIALI MATERIALS MATERIAUX WERKSTOFFE
9*	BUSSOLA STEM SEAL JOINT TIGE UNTERE SPINDELABDICHTUNG	P.T.F.E.
10*	PACCO A "V" CHEVRON RINGS JOINT A "V" 3 FACHE DACHMANSCHETTE	P.T.F.E. / GRAFITE P.T.F.E. / GRAPHITE P.T.F.E. / GRAPHITE P.T.F.E. / GRAPHIT
11	PREMIBUSSOLA PRESSING BUSH PRESSE RONDELLE STOPFBUCHSDRUCKRING	ASTM A479 S31600
12	MOLLE A TAZZA SPRING WASHERS RONDELLES BELLEVILLE TELLERFEDERN	C72/50Cr V4 ZINCATO - GALVANIZED ZINGUE - VERZINKT
13	VITE DI FERMO E FERMO PIN AND STOP PIN PLOT ET PLOT D'ARRET ANSCHLAGBOLZEN	UNI 3740 - 8.8 ZINCATO - GALVANIZED ZINGUE - VERZINKT
14	DADO - CONTRODADO NUT - LOCK NUT ECROU - CONTRE-ECROU MUTTER - KONTERMUTTER	UNI 3740 - 6S ZINCATO - GALVANIZED ZINGUE - VERZINKT
15	LEVA WRENCH LEVIER HANDHEBEL	UNI 5946 Fe 37 ZINCATO - GALVANIZED ZINGUE - VERZINKT
16	VITE SCREW VIS SCHRAUBE	UNI 3740-8.8 ZINCATO-GALVANIZED- ZINGUE-VERZINKT

\* RICAMBI CONSIGLIATI - RECOMMENDED SPARE PARTS - PIECES DE RECHANGE CONSEILLEES - ERSATZTEIL EMPFEHLUNG

## DIMENSIONI - DIMENSION - DIMENSIONS - ABMESSUNGEN

DN	15	20	25	32	40	50	65	80	100	125	150	200	250
A	10	10	12	12	16	16	22	22	30	30	42	48	
B	6	6	8	8	10	10	14	14	18	18	28	32	
C	7	7	10	10	10	10	12	12	17	18	19	20	
D	17,5	17,5	21,5	25,5	32	S/2	S/2	S/2	S/2	S/2	S/2	S/2	
E	15	19	25	30	38	51	64	76	101	118	152	203	
F	M5	M5	M5	M5	M6	M6	M8	M8	M8	M10	M12	M16	
f	DN 15 PN 16								DN 25 PN 16				
ISO	F03	F03	F03	F03	F05	F05	F07	F07	F07	F10	F12	F14	
G	25	25	25	25	35	35	55	55	55	70	85	100	
H	66	68	85	91	110	120	144	152	174	188	256	294	
L	33	33	36,5	41	52	62	79	88	105	133	150	228	
M	145	145	185	185	280	280	370	370	470	650	750	900	
m	Ø1/2" GAS								Ø1" GAS				
N	69	78	81	105	81	102	85	80	86	112	110	95	
P	32,5	35	41	46,5	63	65	82	90,5	99,5	114	144	182	
Q				25	30	30	45	50	70	80	95	130	
R	8	8	17	17	13	21	24	24	27	26	34	37	
P			42,5		63	74,5	87	95	108	122,5	125	144	183
R			17		13	11	19	19	16	16	14	34	36
S	53	53	57	65	79	85	103	120	155	182	234	310	
T	36	36	36	36	50	50	70	70	70	102	125	140	
U	170	180	190	210	230	250	270	300	340	360	420	500	
Z	17,5	17,5	21,5	25,5	32	34	43	47	56	70	117	155	
Kg	4,3	5	6	9	12	14,5	21	27,5	39	55	95	127	

- DATI E CARATTERISTICHE SOGGETTI A VARIAZIONI SENZA PREAVVISO
- SPECIFICATIONS SUBJECT TO MODIFICATION WITHOUT PRIOR NOTICE
- TOUS DROITS DE MODIFICATION RESERVES
- KONSTRUKTIONÄNDERUNGEN VORBEHALTEN

PN 10 ÷ 40 - ANSI 150

ANSI 300

DN 15 ÷ 40 OPTIONAL



ADLER SpA - VALVOLE A SFERA  
20010 S. STEFANO TICINO (MI) ITALY V.le BORLETTI, 14 Tel. +39/02974842.11 FAX +39/0297271698  
E-mail: [adler@adlerspa.com](mailto:adler@adlerspa.com) <http://www.adlerspa.com>





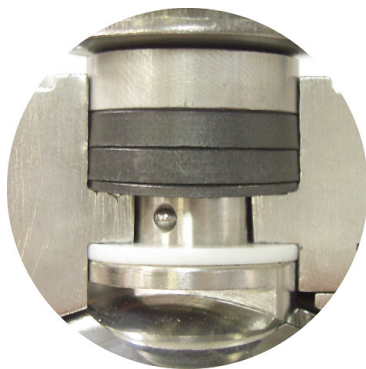
ISO 9001:2008 by L.R.  
 PED DIR. 97/23/EC by L.R.  
 ATEX DIR. 94/9/EC by B.V.  
 FIRE SAFE EXECUTION by L.R.  
 ISO 15848 by TÜV  
 ANTISTATIC DEVICE by L.R.  
 FIRE SAFE TESTED ISO 10497 by L.R.

TYPE  
**FX2**  
 PN 10 ÷ 40  
 ANSI 150 ÷ 300

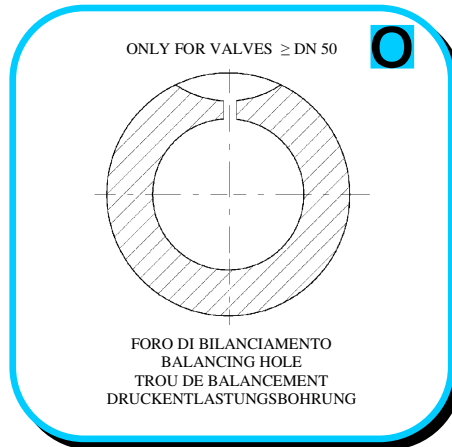
VALVOLA A SFERA "CORPO PIATTO" PASSAGGIO TOTALE CON CAMICIA DI RISCALDAMENTO  
 BALL VALVES "WAFER TYPE" FULL BORE WITH HEATING JACKET

ROBINETS A BOULE "WAFER" PASSAGE INTEGRAL AVEC ENVELOPPE  
 FLANSCHKUGELHÄHNE IN "KOMPAKTBAUWEISE" VOLLER DURCHGANG MIT HEIZMANTEL

▪ ESECUZIONI ▪ EXECUTIONS ▪ EXECUTIONS ▪ AUSFÜHRUNGEN



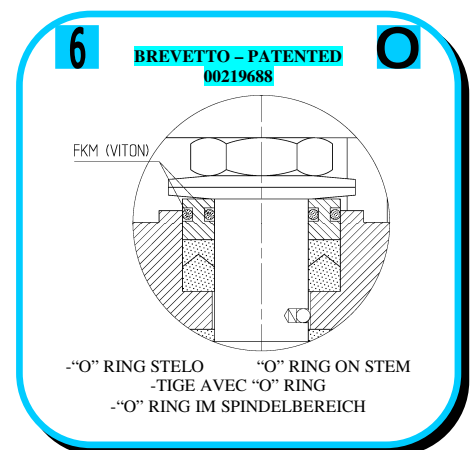
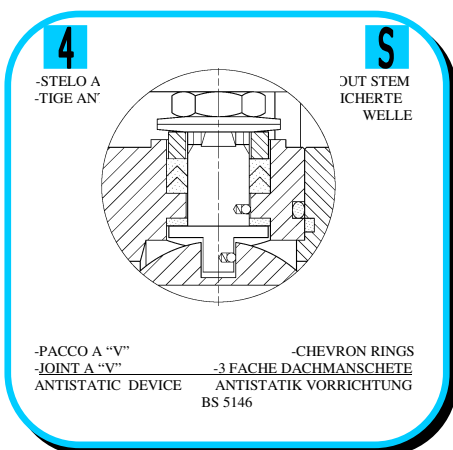
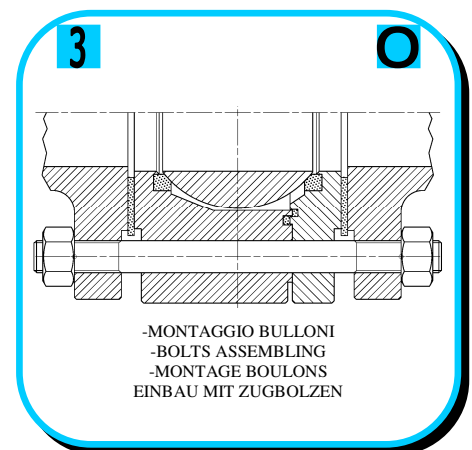
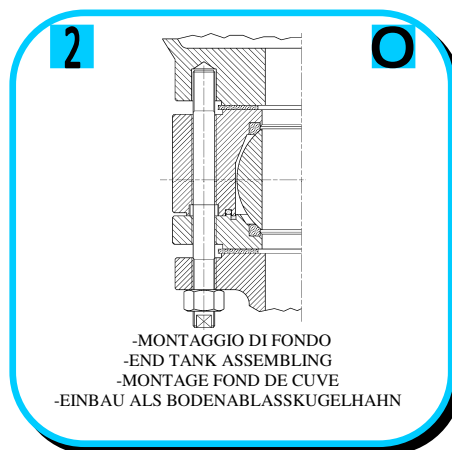
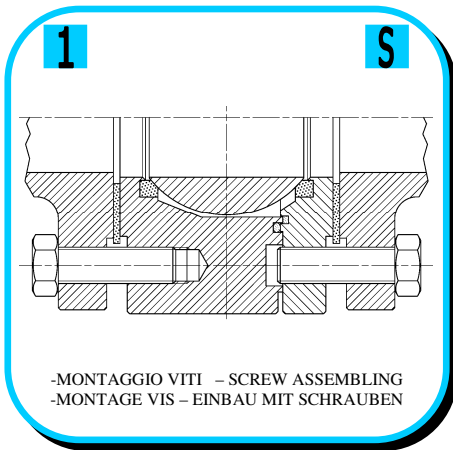
EXECUTION 4 -12



EXECUTION 6 - 16

**S** STANDARD

**O** OPTIONAL





ISO 9001:2008 by L.R.  
 PED DIR. 97/23/EC by L.R.  
 ATEX DIR. 94/9/EC by B.V.  
 FIRE SAFE EXECUTION by L.R.  
 ISO 15848 by TÜV  
 ANTISTATIC DEVICE by L.R.  
 FIRE SAFE TESTED ISO 10497 by L.R.

TYPE  
**FX2**  
 PN 10 ÷ 40  
 ANSI 150 ÷ 300

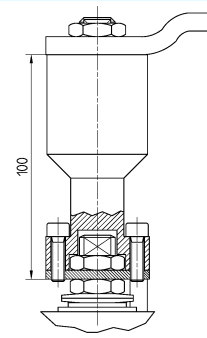
VALVOLA A SFERA "CORPO PIATTO" PASSAGGIO TOTALE CON CAMICIA DI RISCALDAMENTO

ROBINETS A BOULE "WAFER" PASSAGE INTEGRAL AVEC ENVELOPPE

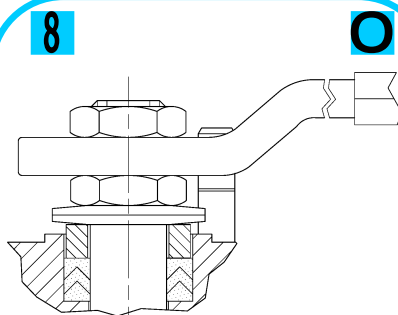
BALL VALVES "WAFER TYPE" FULL BORE WITH HEATING JACKET

FLANSCHKUGELHÄHNEN IN "KOMPAKTBAUWEISE" VOLLER DURCHGANG MIT HEIZMANTEL

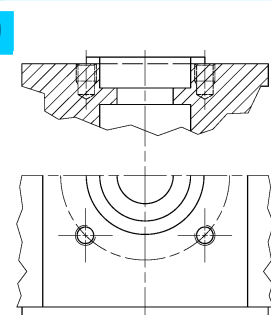
• ESECUZIONI • EXECUTIONS • EXECUTIONS • BESCHREIBUNG

**7**  **O**

-PROLUNGA STELO -STEM EXTENSION  
 -TIGE PROLONGEE -SPINDELVERLÄNGERUNG

**8**  **O**

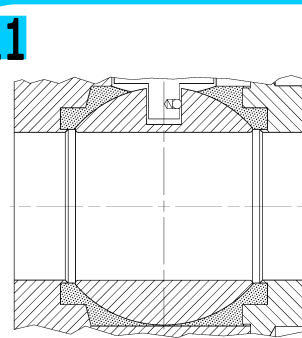
-PARTICOLARI INOX -STAINLESS STEEL DETAILS  
 -ACCESSOIRES EN INOX -EDELSTAHLTEILE

**9**  **S**

-ATTACCO "ISO" -"ISO" FASTENING  
 -SYSTEM "ISO" -ANSCHLUSS "ISO"

**10**  **S**

DN 15 ÷ 200  
 -SFERA CONTENUTA -CONTENTS BALL  
 -BOULE CONTENUE -NICHT RAUSRAGENDE KUGEL

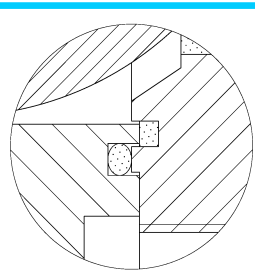
**11**  **O**

-TENUTE INTEGRALE -POCKETLESS SEATS  
 -TENUCE INTEGRALE -TOTRAUMARM  
 -P.T.F.E. / R.T.F.E.

**12** **O**

FIRE SAFE  
 ISO 10497 "ISO-FT"  
 (BS 6755 / API 607)



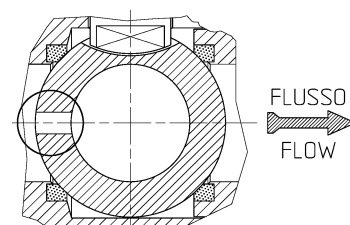
**13**  **S**

BREVETTO - PATENTED  
 00219619 - 21-04-1993

-DOPPIA TENUTA -DOUBLE SEALS  
 -DOUBLE ETANCHEITE -DOPPELTE ABDICHTUNG  
 -LATERALE A BATTUTA -METAL BEATING END  
 -LATERAL AVEC BATTUE MECANIQUE  
 -METALLISCHER ANSCHLAG DES GEGENGEHÄUSES

**14** **S**

VEDERE / SEE ANSI B 16.34



FLUSSO  
 FLOW

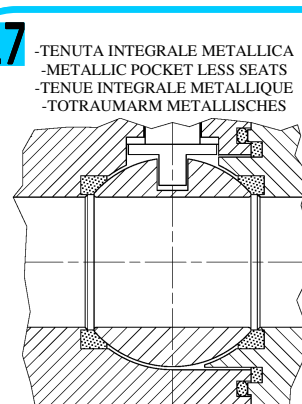
-FORO DI SCARICO NELLA SFERA -OVERPRESSURE HOLE INTO BALL  
 -TROU DECOMPRESSION DANS LA BOULE  
 -ENTLASTUNGSBOHRUNG IN DER KUGEL  
 VALVOLA MONO DIREZIONALE  
 MONO-DIRECTIONAL VALVE

**AQUILA - AEGLE - AIGLE  
 ADLER**

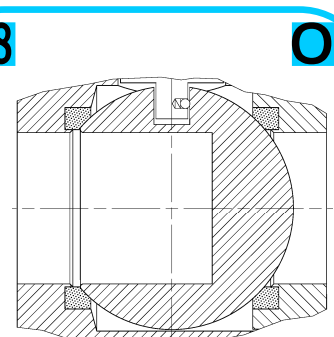


**16**  **O**

-FIRE SAFE ISO FT + "O" RING STELO  
 -FIRE SAFE ISO FT + "O" RING ON STEAM  
 -SECURITE FEU ISO FT + TIGE AVEC "O" RING  
 -FEUERSICHERE AUSFÜHRUNG ISO FT +  
 "O" RING IM SPINDELBEREICH

**17**  **O**

-TENUTA INTEGRALE METALLICA  
 -METALLIC POCKET LESS SEATS  
 -TENUCE INTEGRALE METALLIQUE  
 -TOTRAUMARM METALLISCHES

**18**  **O**

-SFERA CIECA PER CAMPIONATURA  
 -BLIND BALL FOR SAMPLING  
 -PRISE-ECHANTILLON



**VITI D'ASSEMBLAGGIO PER FX2  
ASSEMBLING SCREWS FOR FX2  
VIS D'ASSEMBLAGE POUR FX2  
MONTAGESCHRAUBEN FÜR FX2**

**TABLE  
07**

N° VITI – DIMENSIONE • N° SCREW – DIMENSIONS • N° VIS- DIMENSIONS • N° SCHRAUBEN – ABMESSUNGEN

**EUROPEAN NORM**

DN PN	10-15	20	25	32	40	50	65	80	100	125	150	200	250
10	8 M12 X30	8 M12 X30	8 M12 X30	8 M16 X35	8 M16 X35	8 M16 X40	8 M16 X40	* 16 M16 X40	16 M16 X40	16 M16 X45	16 M20 X45	16 M20 X50	
16	8 M12 X30	8 M12 X30	8 M12 X30	8 M16 X35	8 M16 X35	8 M16 X40	8 M16 X40	16 M16 X40	16 M16 X40	16 M16 X45	16 M20 X45	24 M20 X50	
25	8 M12 X30	8 M12 X35	8 M12 X35	8 M16 X40	8 M16 X40	8 M16 X40	16 M16 X45	16 M16 X45	16 M20 X50	16 M24 X55	16 M24 X55	24 M24 X60	
40	8 M12 X30	8 M12 X35	8 M12 X35	8 M16 X40	8 M16 X40	8 M16 X40	16 M16 X45	16 M16 X45	16 M20 X50	16 M24 X55	16 M24 X55	24 M27 X65	

\* N° 8 per UNI 2223/2229

**ANSI METRIC**

(STANDARD ADLER)

Ø Rating	1/2"	3/4"	1"	1 1/4"	1 1/2"	2"	2 1/2"	3"	4"	5"	6"	8"	10"
150	8 M14 X30	8 M14 X30	8 M14 X30	8 M14 X45	8 M14 X35	8 M16 X40	8 M16 X40	8 M16 X45	16 M16 X45	16 M20 X50	16 M20 X50	16 M20 X50	
300	8 M14 X30	8 M16 X30	8 M16 X35	8 M16 X40	8 M20 X45	16 M16 X40	16 M20 X50	16 M20 X50	16 M20 X55	16 M20 X60	24 M20 X60	24 M20 X60	

**ANSI B1.1 UNC**

(ON REQUEST)

Ø Rating	1/2"	3/4"	1"	1 1/4"	1 1/2"	2"	2 1/2"	3"	4"	5"	6"	8"	10"
150	8 1/2 X 1 1/4	8 1/2 X 1 1/4	8 1/2 X 1 1/4	8 1/2 X 1 1/4	8 1/2 X 1 1/2	8 5/8 X 1 1/2	8 5/8 X 1 3/4	8 5/8 X 1 3/4	16 5/8 X 1 3/4	16 3/4 X 2	16 3/4 X 2	16 3/8 X 2	
300	8 1/2 X 1 1/4	8 5/8 X 1 1/4	8 5/8 X 1 1/2	8 5/8 X 1 1/2	8 3/4 X 1 1/4	16 5/8 X 1 3/4	16 3/4 X 2	16 3/4 X 2	16 3/4 X 2 1/4	16 3/4 X 2 1/4	24 3/4 X 2 1/4	24 7/8 X 2 3/4	



PRZEDSTAWICIEL W POLSCE:

**ARA**  
PNEUMATIK

53-012 Wrocław tel. 71 364 72 85  
ul. Wyścigowa 38 fax 71 364 72 83

www.arapneumatik.pl



ADLER SpA – VALVOLE A SFERA  
20010 S. STEFANO TICINO (MI) ITALY V.le BORLETTI, 14 Tel. +39/02974842.11 FAX +39/0297271698  
E-mail: [adler@adlerspa.com](mailto:adler@adlerspa.com) <http://www.adlerspa.com>