

ISO 9001:2008 by L.R.
PED DIR. 97/23/EC by L.R.
ATEX DIR. 94/9/EC by B.V.
FIRE SAFE EXECUTION by L.R.
ISO 15848 by TÜV
ANTISTATIC DEVICE by L.R.
FIRE SAFE TESTED ISO 10497 by L.R.

WWW.ADLERSPA.COM

TYPE

FY1

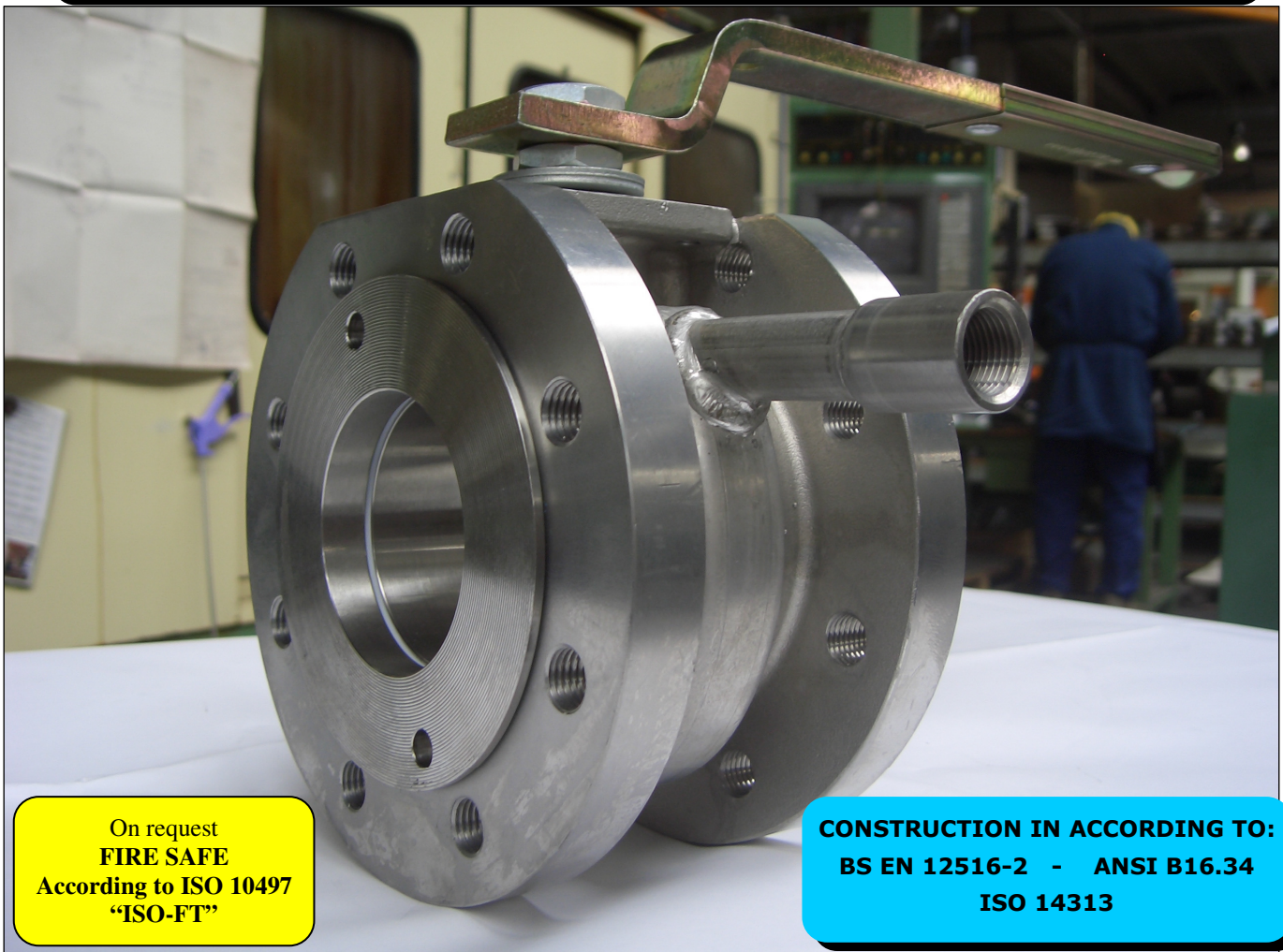
PN 10 ÷ 40
ANSI 150

**BALL VALVES "WAFER TYPE" FULL BORE
WITH HEATING JACKET**

**ROBINETS A BOULE "WAFER" PASSAGE INTEGRAL AVEC
ENVELOPPE**

**FLANSCHKUGELHÄHNE IN "KOMPAKTBAUWEISE"
VOLLER DURCHGANG MIT HEIZMANTEL**

ISO nbr° LRC 0160281 QMS issued by L.R.Q.A. PED nbr° COV 0212112/01 issued by L.R.V.
ATEX nbr° 40.2003.4392 issued by B.V. ISO 15848 nbr° I-148466/1-/2 issued by TÜV



On request
FIRE SAFE
According to ISO 10497
"ISO-FT"

CONSTRUCTION IN ACCORDING TO:
BS EN 12516-2 - ANSI B16.34
ISO 14313

FY1/08 RIPRODUZIONE VIETATA - COPYRIGHT

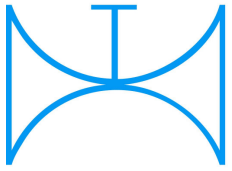
PRZEDSTAWICIEL W POLSCE:

ARA
PNEUMATIK

53-012 Wrocław tel. 71 364 72 85
ul. Wyścigowa 38 fax 71 364 72 83

www.arapneumatik.pl

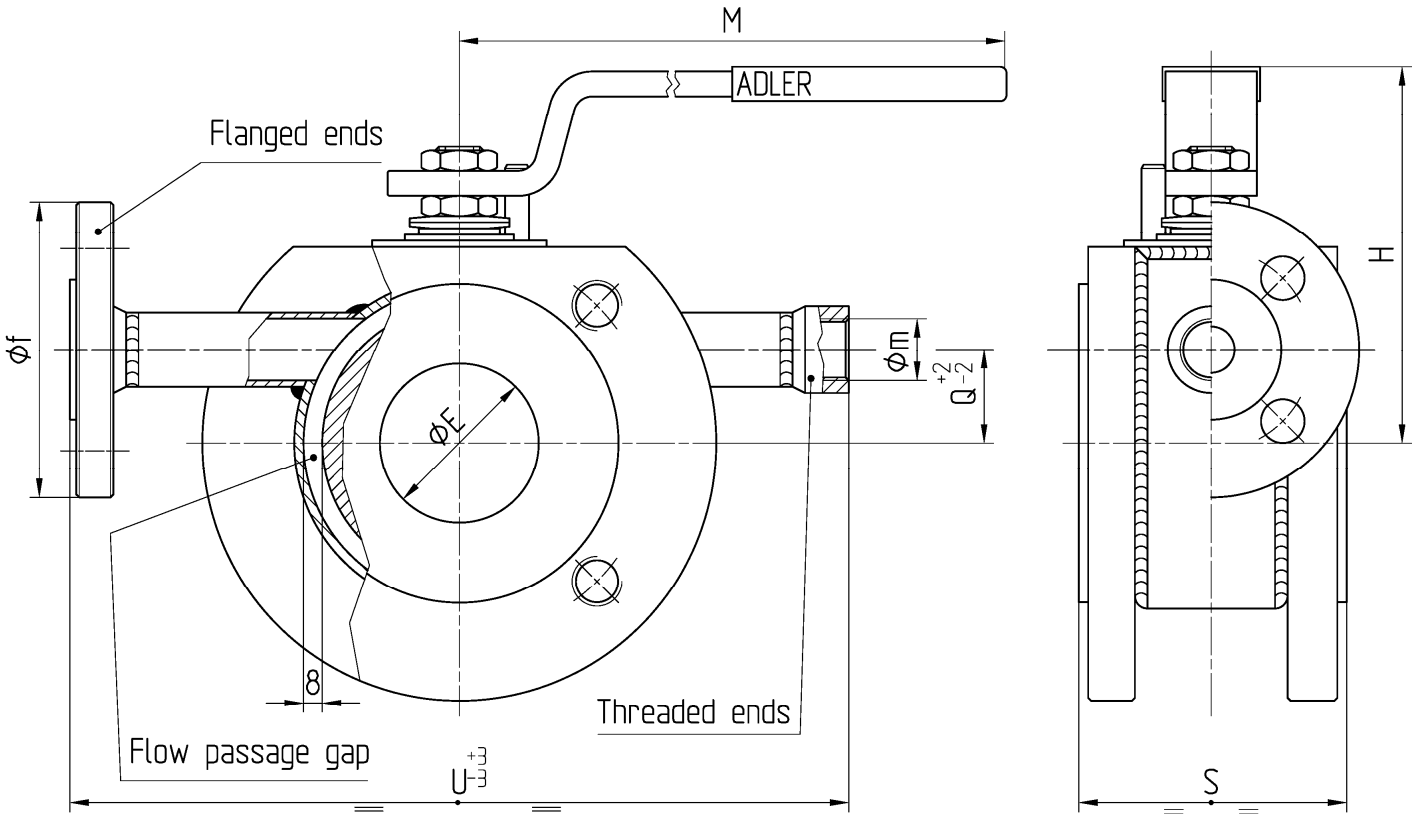




ISO 9001:2008 by L.R.
PED DIR. 97/23/EC by L.R.
ATEX DIR. 94/9/EC by B.V.
FIRE SAFE EXECUTION by L.R.
ISO 15848 by TÜV
ANTISTATIC DEVICE by L.R.
FIRE SAFE TESTED ISO 10497 by L.R.

TYPE
FY1
PN 10 ÷ 40
ANSI 150

VALVOLA A SFERA "CORPO PIATTO" PASSAGGIO TOTALE CON CAMICIA DI RISCALDAMENTO
BALL VALVES "WAFER TYPE" FULL BORE WITH HEATING JACKET
ROBINETS A BOULE "WAFER" PASSAGE INTEGRAL AVEC ENVELOPPE
FLANSCHKUGELHÄHNE IN "KOMPAKTBAUWEISE" VOLLER DURCHGANG MIT HEIZMANTEL

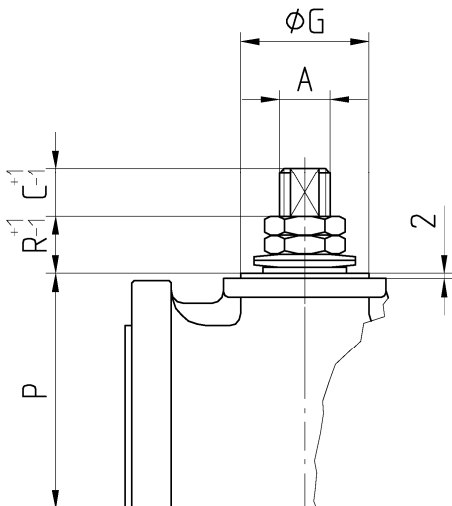


Valvola base FB1
 Main Ball Valve FB1

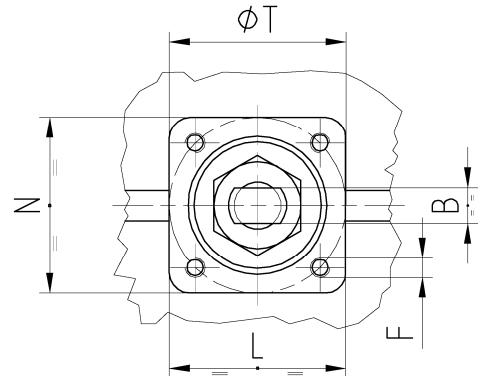
Pressione massima di lavoro nelle camicie 10 bar
 Maximum working pressure for jacket 10 bar

CONSTRUCTION IN ACCORDING TO:
BS EN 12516-2 - ANSI B16.34
ISO 14313

Materiale camicia	CARBON STEEL (STANDARD)
Jacket material	STAINLESS STEEL (OPTIONAL)



• ACCOPPIAMENTO VALVOLA ATTUATORE
 • CONNECTION VALVE ACTUATOR
 • ACCOUPLEMENT ROBINET-ACTIONNEUR
 • ZUSAMMENBAU KUGELHAHN ANTRIEB
ISO-5211



N.	DESCRIZIONE DESCRIPTION BESCHREIBUNG	MATERIALI MATERIALS MATERIAUX WERKSTOFFE
1	CORPO BODY CORPS KÖRPER	ASTM A 351 CF8 ASTM A 351 CF8M
2	GHIERA INSERT EMBOUT GEWINDED RUCKRING	ASTM A 182 F304- A479 S30400 ASTM A 182 F316- A479 S31600
3*	O-RING	FKM - (VITON)
4*	ANELLO SEAL ANNEAU DICHTUNGSRING	P.T.F.E.
5*	SEDE SEAT SIEGE SITZRING	P.T.F.E. + 15% FIBERGLASS
6	SFERA BALL BOULE KUGEL	ASTM A182 F304-A479 S30400 ASTM A351 CF8 ASTM A182 F316-A479 S31600 ASTM A351 CF8M
7	DISPOSITIVO ANTISTATICO ANTISTATIC DEVICE CONTACT ANTISTATIQUE ANTISTATIK VORRICHTUNG	ASTM A479 S31600
8	STELO STEM TIGE SPINDEL	ASTM A182 F304-A479 S30400 ASTM A182 F316-A479 S31600

N.	DESCRIZIONE DESCRIPTION BESCHREIBUNG	MATERIALI MATERIALS MATERIAUX WERKSTOFFE
9*	BUSSOLA STEM SEAL JOINT TIGE UNTERE SPINDEL ABDICHTUNG	P.T.F.E.
10*	PACCO A "V" CHEVRON RINGS JOINT A "V" 3 FACHE DACHMANSCHETTE	P.T.F.E. / GRAFITE P.T.F.E. / GRAPHITE P.T.F.E. / GRAPHIT
11	PREMIBUSSOLA PRESSING BUSH PRESSE RONDELLE STOPFBUCHSDRUCKRING	ASTM A479 S31600
12	MOLLE A TAZZA SPRING WASHERS RONDELLES BELLEVILLE TELLERFEDERN	C72/50Cr V4 ZINCATO - GALVANIZED ZINGUE - VERZINKT
13	VITE DI FERMO E FERMO PIN AND STOP PIN PLOT ET PLOT D'ARRET ANSCHLAGBOLZEN	UNI 3740 - 8.8 ZINCATO - GALVANIZED ZINGUE - VERZINKT
14	DADO - CONTRODADO NUT - LOCK NUT ECROU - CONTRE-ECROU MUTTER - KONTERMUTTER	UNI 3740 - 6S ZINCATO - GALVANIZED ZINGUE - VERZINKT
15	LEVA WRENCH LEVIER HANDHEBEL	UNI 5946 Fe 37 ZINCATO - GALVANIZED ZINGUE - VERZINKT
16		

* RICAMBI CONSIGLIATI - RECOMMENDED SPARE PARTS - PIECES DE RECHANGE CONSEILLEES - ERSATZTEIL EMPFEHLUNG

DIMENSIONI - DIMENSION - DIMENSIONS - ABMESSUNGEN

DN	15	20	25	32	40	50	65	80	100	125	150	200	250	300
A					16	16	22	22	30	30				
B					10	10	14	14	18	18				
C					10	10	12	12	17	17				
E					38	51	64	76	101	118				
F					M6	M6	M8	M8	M8	M10				
f					DN 15 PN 16				D N25 PN 16					
ISO					F05	F05	F07	F07	F07	F10				
G					35	35	55	55	55	70				
H					110	120	144	152	174	188				
L					58	56	67	68	70	97				
M					280	280	370	370	470	650				
m					Ø1/2" GAS				Ø1" GAS					
N					54	54	70	70	70	97				
P					55	65	82	90,5	99,5	113				
Q					30	30	50	50	70	80				
R					20	21	24	24	27	27				
S					64	85	103	120	155	182				
T					50	50	70	70	70	102				
U					230	250	270	300	340	360				
Kg					7,5	10	12,5	17,5	23,5	34,5				

- DATI E CARATTERISTICHE SOGGETTI A VARIAZIONI SENZA PREAVVISO
- SPECIFICATIONS SUBJECT TO MODIFICATION WITHOUT PRIOR NOTICE
- TOUS DROITS DE MODIFICATION RESERVES
- KONSTRUKTIONSÄNDERUNGEN VORBEHALTEN



ADLER SpA - VALVOLE A SFERA
20010 S. STEFANO TICINO (MI) ITALY V.le BORLETTI, 14 Tel. +39/02974842.11 FAX +39/0297271698
E-mail: adler@adlerspa.com <http://www.adlerspa.com>



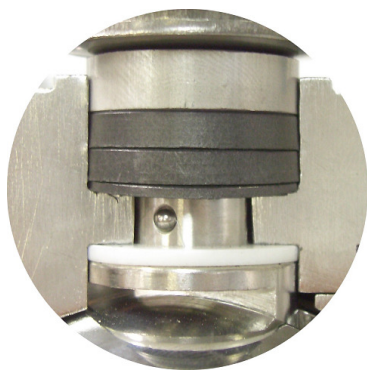
**ISO 9001:2008 by L.R.
 PED DIR. 97/23/EC by L.R.
 ATEX DIR. 94/9/EC by B.V.
 FIRE SAFE EXECUTION by L.R.
 ISO 15848 by TÜV
 ANTISTATIC DEVICE by L.R.
 FIRE SAFE TESTED ISO 10497 by L.R.**

**TYPE
 FY1
 PN 10 ÷ 40
 ANSI 150**

VALVOLA A SFERA "CORPO PIATTO" PASSAGGIO TOTALE CON CAMICIA DI RISCALDAMENTO
 BALL VALVES "WAFER TYPE" FULL BORE WITH HEATING JACKET

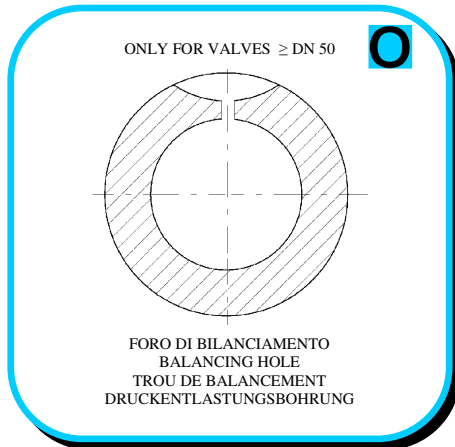
ROBINETS A BOULE "WAFER" PASSAGE INTEGRAL AVEC ENVELOPPE
 FLANSCHKUGELHÄHNHE IN "KOMPAKTBAUWEISE" VOLLER DURCHGANG HEIZMANTEL

▪ ESECUZIONI ▪ EXECUTIONS ▪ EXECUTIONS ▪ AUSFÜHRUNGEN



EXECUTIONS 4- 12

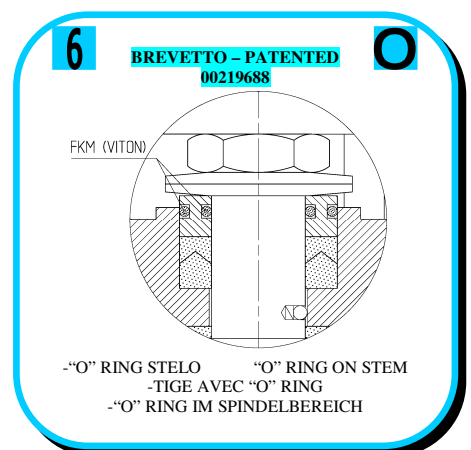
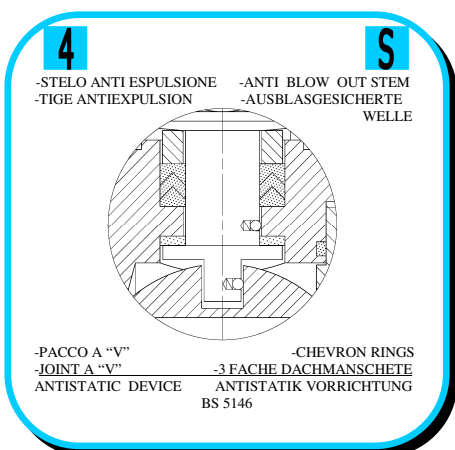
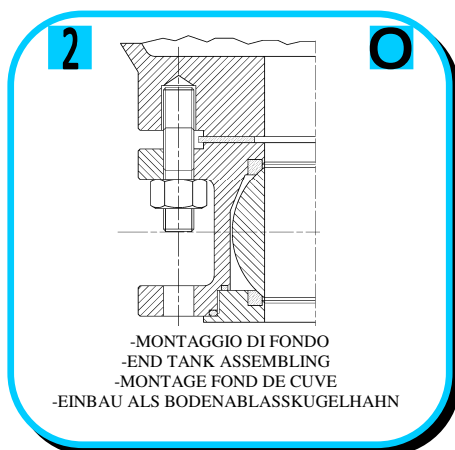
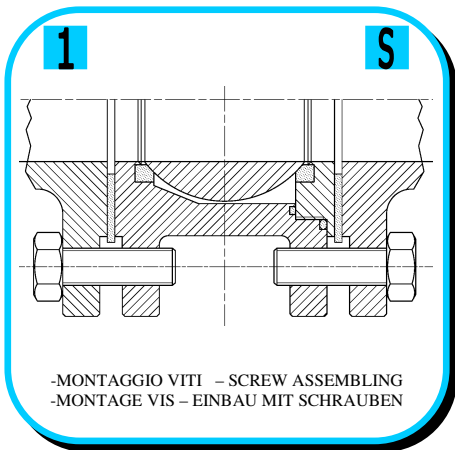
16



EXECUTIONS 6 -

S STANDARD

O OPTIONAL



FY1/08 RIPRODUZIONE VIETATA - COPYRIGHT



ISO 9001:2008 by L.R.
PED DIR. 97/23/EC by L.R.
ATEX DIR. 94/9/EC by B.V.
FIRE SAFE EXECUTION by L.R.
ISO 15848 by TÜV
ANTISTATIC DEVICE by L.R.
FIRE SAFE TESTED ISO 10497 by L.R.

TYPE
FY1
PN 10 ÷ 40
ANSI 150

VALVOLA A SFERA "CORPO PIATTO" PASSAGGIO TOTALE CON CAMICIA DI RISCALDAMENTO
 BALL VALVES "WAFFER TYPE" FULL BORE WITH HEATING JACKET

ROBINETS A BOULE "WAFER" PASSAGE INTEGRAL AVEC ENVELOPPE
 FLANSCHKUGELHÄHNNE IN "KOMPAKTBAUWEISE" VOLLER DURCHGANG HEIZMANTEL

• ESECUZIONI • EXECUTIONS • EXECUTIONS • BESCHREIBUNG

7 **O**

-PROLUNGA STELO -STEM EXTENSION
 -TIGE PROLONGEE -SPINDELVERLÄNGERUNG

8 **O**

-PARTICOLARI INOX
 -STAINLESS STEEL DETAILS
 -ACCESSOIRES EN INOX
 -EDELSTAHLTEILE

9 **S**

-ATTACCO "ISO" -"ISO" FASTENING
 -SYSTEM "ISO" -ANSCHLUSS "ISO"

10 **S**

-SFERA CONTENUTA -CONTENTS BALL
 -BOULE CONTENUE
 -NICHT RAUSRAGENDE KUGEL

11 **O**

-TENUTE INTEGRALE -POCKETLESS SEATS
 -TENUUE INTEGRALE -TOTRAUMARM
 -P.T.F.E. / R.T.F.E.

12 **O**

FIRE SAFE
ISO 10497 "ISO-FT"
(BS 6755 / API 607)

13 **S**

-DOPPIA TENUTA -DOUBLE SEALS
 -DOUBLE ETANCHEITE -DOPPELTE ABDICHTUNG
 -GHIERA A BATTUTA -METAL BEATING RING
 -EMBOUT AVEC BATTUE MECANIQUE
 -METALLISCHER ANSCHLAG DES
 GEWINDED RUCKINGS

14 **S**

VEDERE / SEE ANSI B 16.34

FLUSSO
 FLOW

-FORO DI SCARICO NELLA SFERA
 -OVERPRESSURE HOLE INTO BALL
 -TROU DECOMPRESSION DANS LA BOULE
 -ENTLASTUNGSBOHRUNG IN DER KUGEL
VALVOLA MONO DIREZIONALE
MONO-DIRECTIONAL VALVE

TUFT CERTIFICATION
FOR FIRE-SAFE VALVES

TUV
 INX

CERTIFICATE

This certificate with No. 51484992 is the result of a non-destructive test performed on a

ADLER s.p.a.
 Via S. Felice 20/A
 20136 Milano (MI)

with reference to the requirements of EN 10752-2 (EN 10752) (Mechanical Resistance test for Reinforcing steel) and EN 10752-3 (EN 10752) (Mechanical Resistance test for Reinforcing steel) and with reference to EN 10752-1 (EN 10752).

COMPANY: ADLER S.p.A. Valvole a Sfera - S. Stefano Ticino (MI)

TEST LOCATION: Laboratory: OMEGA, Monza (MI) and ADLER Production site

TYPE OF TESTING: Ball test, according to EN 10752-2, reinforced pressure class 150 (EN 10752-3) and reinforced class 150 (EN 10752-1)

TESTED VALVES: 150 (EN 10752-3) and reinforced class 150 (EN 10752-1)

REQUIREMENTS: Mechanical resistance of shaft sealing system according to EN 10752-2, EN 10752-3 and EN 10752-1, and compliance with EN 10752-1 (EN 10752-1) and EN 10752-2 (EN 10752-2) and EN 10752-3 (EN 10752-3)

LEAK DETECTION METHOD: Visual test (EN 10752-2, EN 10752-3 and EN 10752-1)

PACKING MATERIAL: Graphite (PTFE) based material (type Robust HLT 100)

PACKING BEARING: Graphite (PTFE) based material (type Robust HLT 100)

CONFORMANCE: As per attached drawing No. 470 2 2738 1 to 4

TEST RESULTS: Details of the test: Owner Test Report: SP0500000

QUALIFICATION: The described valve shaft sealing system satisfies the TA-LUFT requirements referred to in EN 10752-2, EN 10752-3 and EN 10752-1. The certificate is valid for a limited quantity of 1000 valves, depending on the quantity of valves supplied during 100 cycles (approximate) of 1000 cycles and 100 tests (EN 10752-2, EN 10752-3 and EN 10752-1).

IMPORTANT: This certificate must be returned to the OMEGA Test Report SP0500000 and the Adler Procedure - GDS 01

LOCATION: MILANO 0802008

TUV INX
 TÜV INSTITUT
 TÜV INSPEKTOR

16 **O**

-FIRE SAFE ISO FT + "O" RING STELO
 -FIRE SAFE ISO FT + "O" RING ON STEM
 -SECURITE FEU ISO FT + TIGE AVEC "O" RING
 -FEUERSICHERE AUSFÜHRUNG ISO FT +
 "O" RING IM SPINDELBEREICH

ADLER

UNA GAMMA COMPLETA
 PRIVILEGIANDO LA QUALITA'

A COMPLETE RANGE PRIVILEGING
 THE QUALITY

18 **O**

-SFERA CIECA PER CAMPIONATURA
 -BLIND BALL FOR SAMPLING
 -PRISE-ECHANTILLON
 KUGEL FÜR PROBENAHME



**VITI D'ASSEMBLAGGIO PER FY1
ASSEMBLING SCREWS FOR FY1
VIS D'ASSEMBLAGE POUR FY1
MONTAGESCHRAUBEN FÜR FY1**

**TABLE
07**

N° VITI – DIMENSIONE • N° SCREW – DIMENSIONS • N° VIS- DIMENSIONS • N° SCHRAUBEN – ABMESSUNGEN

EUROPEAN NORM

DN PN	10-15	20	25	32	40	50	65	80	100	125	150	200
10				8 M16 X35	8 M16 X35	8 M16 X40	8 M16 X40	* 16 M16 X40	16 M16 X40	16 M16 X45		
16				8 M16 X35	8 M16 X35	8 M16 X40	8 M16 X40	16 M16 X40	16 M16 X40	16 M16 X45		
25				8 M16 X40	8 M16 X40	8 M16 X40	16 M16 X45	16 M16 X45	16 M20 X50	16 M24 X55		
40				8 M16 X40	8 M16 X40	8 M16 X40	16 M16 X45	16 M16 X45	16 M20 X50	16 M24 X55		

ANSI METRIC

(STANDARD ADLER)

Ø Rating	1/2"	3/4"	1"	1 1/4"	1 1/2"	2"	2 1/2"	3"	4"	5"	6"	8"
150				8 M14 X35	8 M14 X35	8 M16 X40	8 M16 X40	8 M16 X45	16 M16 X45	16 M20 X50		

ANSI B1.1 UNC

(ON REQUEST)

Ø Rating	1/2"	3/4"	1"	1 1/4"	1 1/2"	2"	2 1/2"	3"	4"	5"	6"	8"
150				8 1/2 X 1 1/4	8 1/2 X 1 1/2	8 5/8 X 1 1/2	8 5/8 X 1 3/4	8 5/8 X 1 3/4	16 5/8 X 1 3/4	16 3/4 X 2		

ADLER WORKSHOP



PRZEDSTAWICIEL W POLSCE:

ARA
PNEUMATIK

53-012 Wrocław tel. 71 364 72 85
ul. Wyścigowa 38 fax 71 364 72 83

www.arapneumatik.pl



ADLER SpA – VALVOLE A SFERA
20010 S. STEFANO TICINO (MI) ITALY V.le BORLETTI, 14 Tel. +39/02974842.11 FAX +39/0297271698
E-mail: adler@adlerspa.com <http://www.adlerspa.com>