

GUIDE UNITS FOR CYLINDERS



Guide units for ISO 15552 and ISO 6432 cylinders. Designed to ensure high resistance to side loads, non-rotating effect and optimal alignment. Featuring high positioning precision. Available with bronze slide bearings for high loads or with ball bearings for high speeds.

TECHNICAL INFORMATION

Plate	Anodized Aluminium
Body	Anodized Aluminium
Guiding bush	Sintered bronze
Ball bushing	Steel
Seals	NBR
Piston rod	Steel
Working temperature	-20°C +80°C with dry air

CYLINDERS KEY CODE

NRB		32	05
Version		Diameter	Stroke
NRB	H type guide unit with slide bearings	12-16	0...500
NRS	H type guide unit with ball bearings	20	
NRU	U type guide unit with slide bearings	25	
		32	
		40	
		50	
		63	
		80	
		100	

ARA[®]
PNEUMATIK
 ul. Wyścigowa 38, 53-012 Wrocław
 tel. 71 364 72 82, ara@arapneumatik.pl
www.arapneumatik.pl

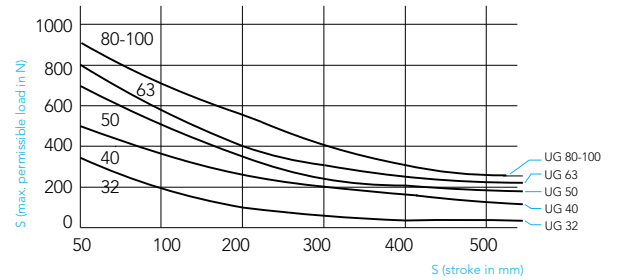
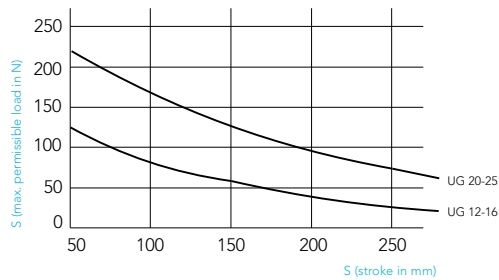
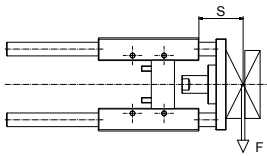


STANDARD STROKES

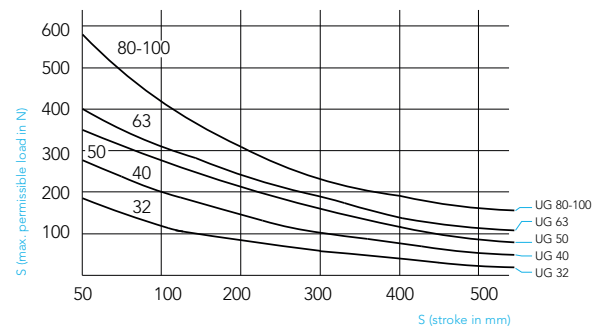
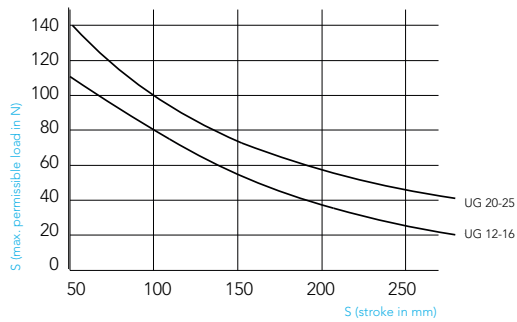
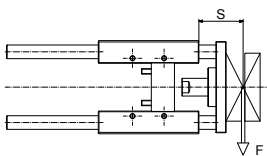
Ø (mm)	Standard strokes (mm)								
	50	100	160	200	250	320	400	500	
12-16	50	100	160	200	250	320	400	500	
20	50	100	160	200	250	320	400	500	
25	50	100	160	200	250	320	400	500	
32	50	100	160	200	250	320	400	500	
40	50	100	160	200	250	320	400	500	
50	50	100	160	200	250	320	400	500	
63	50	100	160	200	250	320	400	500	
80	50	100	160	200	250	320	400	500	
100	50	100	160	200	250	320	400	500	
125	50	100	160	200	250	320	400	500	

MAXIMUM LOADS

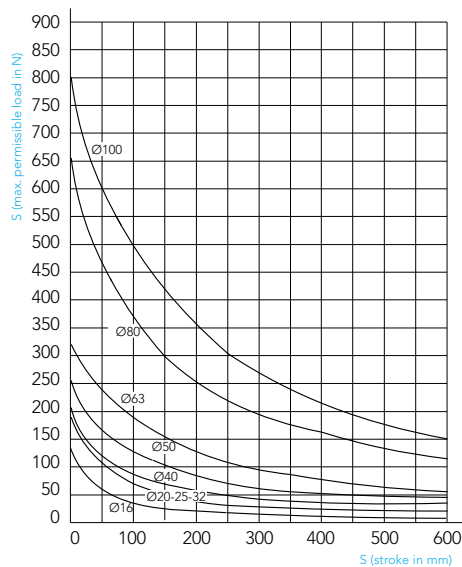
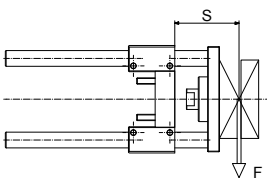
H type with slide bearings



H Type with ball bushings



U Type with slide bearings

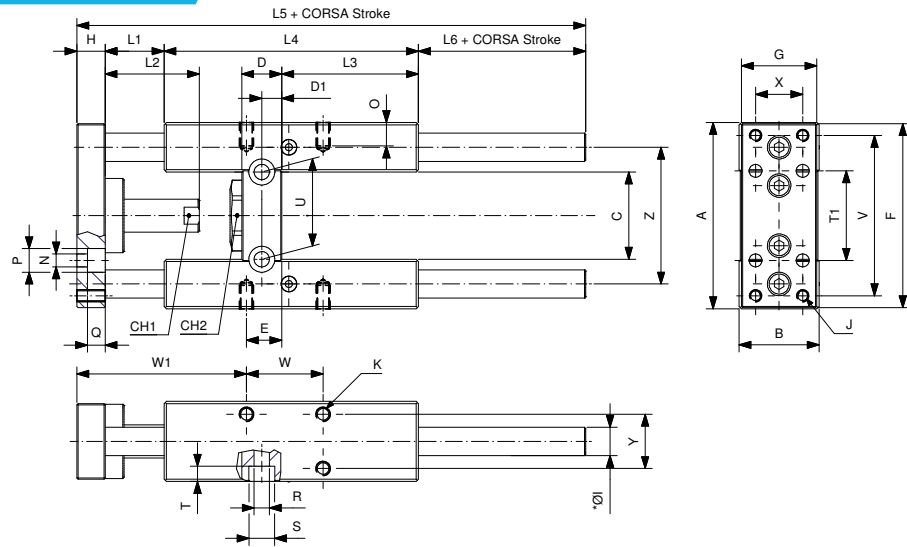
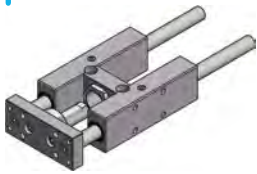


GUIDE UNITS FOR CYLINDERS

GUIDING UNIT TYPE H Ø12-25 FOR ISO 6432 CYLINDERS

NRSØ/...

NRBØ/...



Ø mm	A	B	C	CH1	CH2	D	D1	E	F	G	H	ØI1	ØI2	J	K	L1	L2	L3
12-16	69	30	30	8	24	12	6	8	66	29	10	10	8	M4	M4	25	18	46
20	79	34	37	12	27	17	8.5	15	78	32	12	12	10	M5	M6	25	40	58
25	79	34	37	12	27	17	8.5	15	78	32	12	12	10	M5	M6	25	40	58

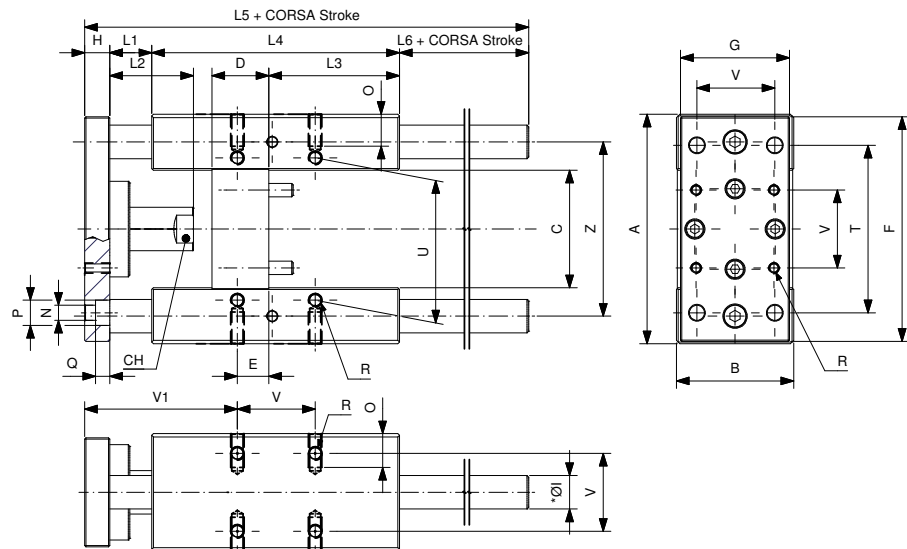
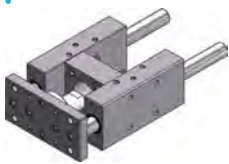
Ø mm	L4	L5	L6	N	O	P	Q	R	S	T	T1	U	V	W	W1	X	Y	Z
12-16	68	123.5	20.5	4.5	6	8	4.5	5.5	9	5.5	32	24	58	18	49	18	22	49.5
20	108	166	21	5.5	9	10	7.5	6.5	11	6.5	38	38	68	32.5	20	72	23	58
25	108	166	21	5.5	9	10	7.5	6.5	11	6.5	38	38	68	32.5	20	72	23	58

*ØI1 = Slide bearing version *ØI2 = Ball bearing version

GUIDING UNIT TYPE H Ø32-100 FOR ISO 15552 CYLINDERS

NRSØ/...

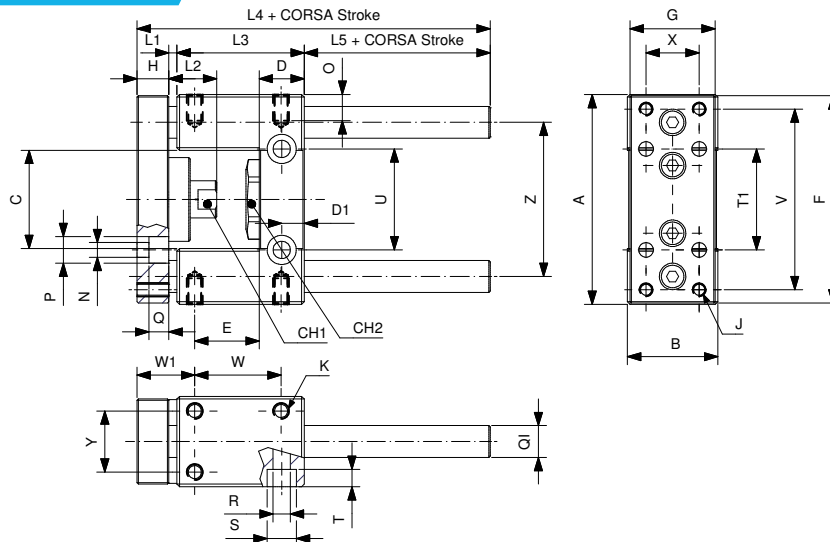
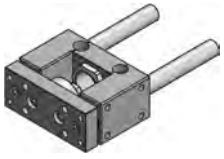
NRBØ/...



Ø mm	A	B	C	CH	D	E	F	G	H	ØI	L1	L2	L3	L4	L5	L6	N	O	P	Q	R	T	U	V	V1	Z
32	97	49	51	15	24	4.3	93	45	12	12	25	42	75	125	187	25	6.6	12	11	6.5	M6	78	61	32.5	82.7	74
40	115	58	58.2	15	28	11	112	55	12	16	25	42	80	140	207	30	6.6	12	11	6.5	M6	84	69	38	86	87
50	137	70	70.2	20	34	18.8	134	65	15	20	25	50	78	148	223	35	9	16	15	8.5	M8	100	85	46.5	91.2	104
63	152	85	85.2	20	34	15.3	147	80	15	20	25	50	106	178	243	25	9	16	15	9	M8	105	100	56.5	96.7	119
80	189	105	105.5	26	50	25	180	100	20	25	25	50	111	195	267	27	11	20	18	11	M10	130	130	72	104	148
100	213	130	130.5	26	55	30	206	120	20	25	25	50	128	218	290	27	11	20	18	11	M10	150	150	89	105	173

GUIDING UNIT TYPE U Ø12-25 FOR ISO 6432 CYLINDERS

NRUØ/...

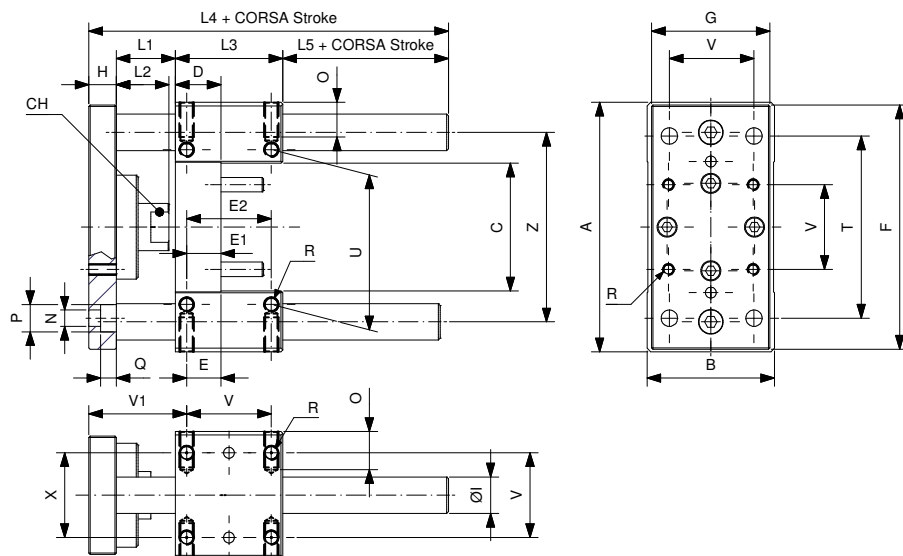


Ø mm	A	B	C	CH1	CH2	D	D1	E	F	G	H	ØI	J	K	L1	L2	L3
12-16	69	30	30	8	24	12	6	19.5	66	29	10	10	M4	M4	3	15	38
20	79	34	37	12	27	17	8.5	24.25	78	32	12	12	M5	M6	3	18	48
25	79	34	37	12	27	17	8.5	24.25	78	32	12	12	M5	M6	3	18	48

Ø mm	L4	L5	N	O	P	Q	R	S	T	T1	U	V	W	W1	X	Y	Z
12-16	66.5	15.5	4.5	6	7.5	4.5	5.5	9	5.5	32	24	58	25	19.5	18	22	49.5
20	83	20	5.5	9	10	7.5	6.5	11	6.5	38	38	68	32.5	21.75	20	23	58
25	83	20	5.5	9	10	7.5	6.5	11	6.5	38	38	68	32.5	21.75	20	23	58

GUIDING UNIT TYPE U Ø32-100 FOR ISO 15552 CYLINDERS

NRUØ/...



Ø mm	A	B	C	CH	D	E	E1	E2	F	G	H	ØI	L1	L2	L3	L4	L5	N	O	P	Q	R	T	U	V	V1	Z
32	97	49	51	15	17	9.25	9.25	32.5	93	45	12	12	42	25	48	120	18	6.6	12	11	6.5	M6	78	61	32.5	61.75	74
40	115	58	58.2	15	21	11	11	38	112	55	12	16	43	25	58	130	17	6.6	12	11	6.5	M6	84	69	38	65	87
50	137	70	70.2	20	25	18.8	18.8	46.5	134	65	15	20	49	29	59	143	20	9	16	15	8.5	M8	100	85	46.5	70.2	104
63	152	85	85.2	20	25	15.3	15.3	56.5	147	80	15	20	49	29	76	161	21	9	16	15	9	M8	105	100	56.5	73.7	119
80	189	105	105.5	26	34	25	14	50	180	100	20	25	53	27	90	193	30	11	20	18	11	M10	130	130	72	82	148
100	213	130	130.5	26	39	28.5	19	70	206	120	20	25	54	27	110	214	30	11	20	18	11	M10	150	150	89	84.5	173