

Manually Actuated Valves



Manual Slide Valves HSV

Nominal diameter from 7 mm to 24 mm



Suitability for Industry-Specific Applications



Manual slide valves HSV

Applications

- Manual slide valve for manual switching of vacuum or compressed air circuits
- Robust construction permits high switching frequencies
- For use in vacuum gripping systems and handling devices
- May be installed in any orientation

Design

- Manual slide valve made of brass and aluminium
- Additional lock possible (HSV 12 3/2 S)
- Easily-actuated sliding sleeve
- 3/2-way valve

Our Highlights...

- For use with vacuum and compressed air
- Wide range of nominal sizes
- Robust metal construction
- Small size
- Venting function

Your Benefits...

- > Absolutely vacuum-tight: no leaks
- > Optimum matching to the nominal flow rate
- > Robust and free of wear
- > Space-saving and ergonomic
- > Venting function for quick release of parts

Designation Code Manual Slide Valves HSV

Abbreviated designation	Nominal size in mm	Version
Example HSV 7 3/2:		
HSV	7	3/2
HSV	7	3/2 3/2-way-valve
	8	
	12	
	24	

Ordering Data Manual Slide Valves HSV

Manual slide valve HSV is delivered as a ready to connect product.



Manually Actuated Valves



Manual Slide Valves HSV

Nominal diameter from 7 mm to 24 mm

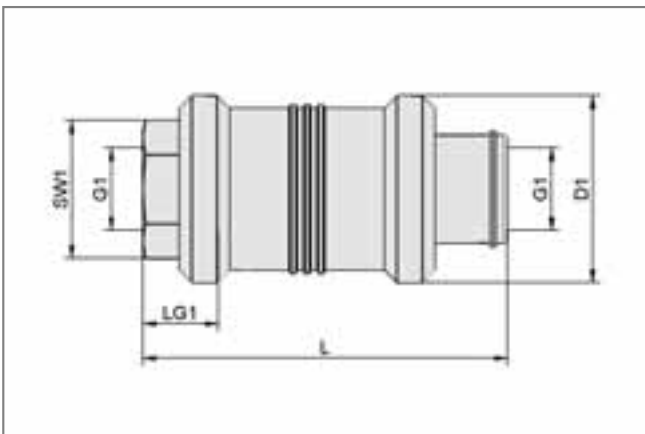
Manual Slide Valves HSV

Type	Part Number
HSV 7 3/2	10.05.07.00034
HSV 8 3/2	10.05.07.00035
HSV 12 3/2	10.05.07.00036
HSV 12 3/2 S	10.05.07.00037
HSV 24 3/2 S	10.05.07.00038

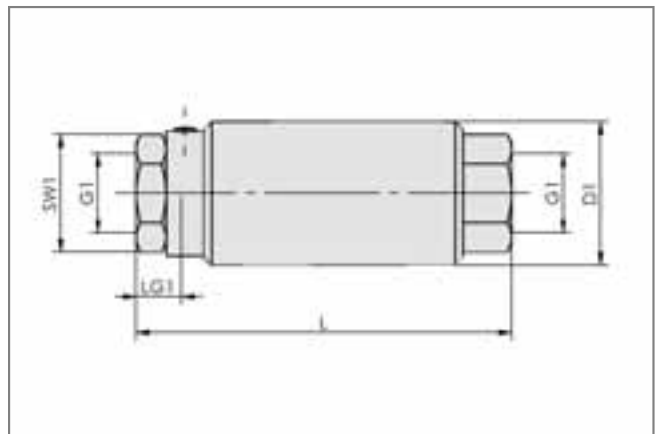
Technical Data Manual Slide Valves HSV

Type	Nominal size [mm]	Nominal flow rate [m³/h]	Nominal flow rate [l/min]	Work area [bar]	Weight [kg]
HSV 7 3/2	7	6	100	-0.95...10.0	0.097
HSV 8 3/2	8	10	167	-0.95...10.0	0.156
HSV 12 3/2	12	16	267	-0.95...10.0	0.230
HSV 12 3/2 S	12	16	267	-0.95...10.0	0.356
HSV 24 3/2 S	24	50	833	-0.95...10.0	0.513

Design Data Manual Slide Valves HSV



HSV 7 3/2 to 12 3/2



HSV 12 3/2 S and HSV 24 3/2 S with lock

Type	Dimensions in mm					
	D1	G1	L	LG1	SW1	
HSV 7 3/2	30	G1/4"-F	58.0	12	19	
HSV 8 3/2	35	G3/8"-F	70.7	15	22	
HSV 12 3/2	40	G1/2"-F	80.0	16	27	
HSV 12 3/2 S	38	G1/2"-F	99.5	15	27	
HSV 24 3/2 S	45	G3/4"-F	110.0	16	32	

Manually Actuated Valves

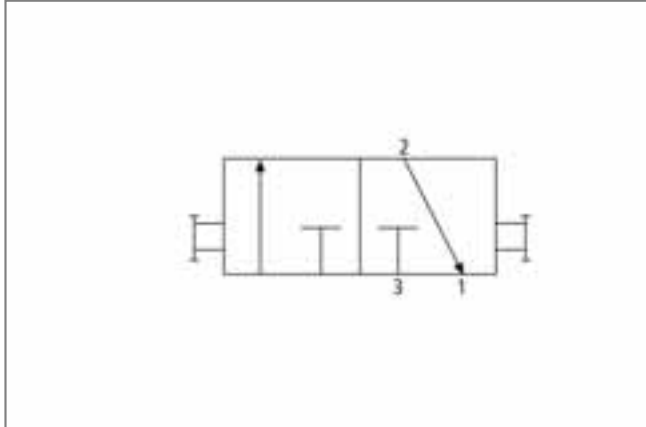


Manual Slide Valves HSV

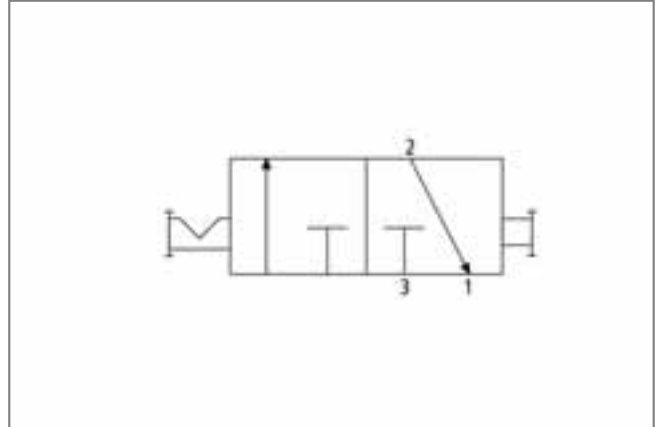
Nominal diameter from 7 mm to 24 mm



Functional Circuit Diagram Manual Slide Valves HSV



Circuit diagram HSV (1 = vacuum generator; 2 = suction pad; 3 = ventilation)



Circuit diagram HSV-S (1 = vacuum generator; 2 = suction pad; 3 = ventilation)

- Schmalz - The Company
- Vacuum Knowledge
- Vacuum Suction Pads
- Special Grippers
- Mounting Elements
- Vacuum Generators
- Valve Technology**
- Switches and Monitoring
- Filters and Connections
- Vacuum Gripping Systems
- Services
- Contact
- Index of Products

