

# LIQUIfit® Push-In Fittings with Metal Adaptors

The LIQUIfit® range now benefits from a range extension of **metal adaptors** designed for **liquid transfer applications**. These fittings ensure **reliable** and **compact** connections combined with **excellent robustness**.

## Product Advantages

### Innovative Technology & Concept

Ergonomic and aesthetic design  
 Compact product for water applications  
 Easy-to-clean external surfaces  
 Full flow  
 Use with a pre-prepared metallic tubing  
 Gripping system preventing any pumping effect

### Optimal Performance

Patented sealing technology  
 100% leak-tested in production  
 Date coding to guarantee quality and traceability  
 Wide range of shapes and numerous configurations  
 Excellent robustness for a long lifespan

### High Performance Material

Bio-sourced polymer body meeting the most severe food process regulations  
 Compatibility with beverages (stainless steel version)  
 Unsurpassed chemical and mechanical resistance, even at high temperatures  
 Free of bisphenol A and phthalates, conforming with regulations



Industrial Fluids  
 Beverage Process  
 Inert Gases  
 Cooling Systems  
 Food Process

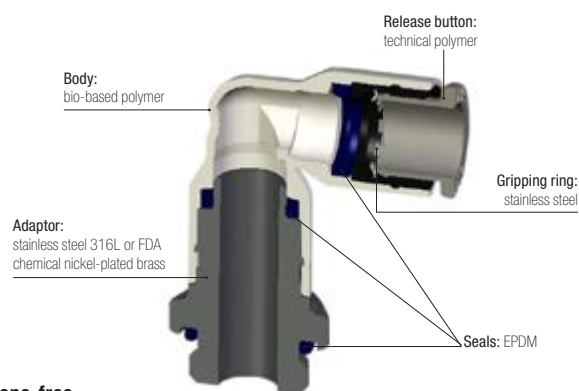
Applications

## Technical Characteristics

<b>Compatible Fluids</b>	Water, beverages, industrial fluids: stainless steel threads Industrial fluids: FDA chemical nickel-plated brass threads					
<b>Working Pressure</b>	Vacuum to 16 bar					
<b>Working Temperature</b>	-10°C to +130°C up to 12 bar for O.D.4, 6 and 8 mm -10°C to +95°C for all other diameters					
<b>Tightening Torques (BSPP)</b>	Thread	M5 X0.8	G1/8	G1/4	G3/8	G1/2
	daN.m	0.16	0.8	1.2	3	3.5

Reliable performance is dependent upon the type of fluid conveyed, component materials and tubing being used.  
 Use is guaranteed with a vacuum of 755 mm Hg (99% vacuum).

### Component Materials



Silicone-free

### Regulations

DI: 2002/95/EC (RoHS), 2011/65/EC  
 RG: 1935/2004/EC  
 FDA: 21 CFR

KTW (stainless steel only)  
 W270 (stainless steel only)

DYSTRYBUTOR PARKER PREMIUM

**ARA**<sup>®</sup>  
**PNEUMATIK**

| arapneumatik.pl

PARKER STORE WROCLAW  
 pneumatyka@arapneumatik.pl  
 TEL. 71 364 72 80

PARKER STORE KATOWICE  
 katowice@arapneumatik.pl  
 TEL. 32 779 76 40



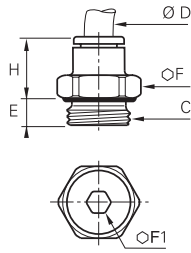
# Stud Fittings with Stainless Steel Adaptor



## 6911 Stud Fitting, Male BSPP and Metric Thread



Stainless steel 316L, EPDM

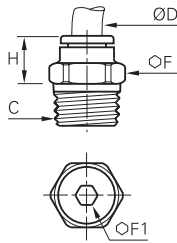


ØD	C		E	F	F1	H	Kg
4	M5x0.8	<a href="#">6911 04 19</a>	3	10	2.5	14	0.006
	G1/8	<a href="#">6911 04 10</a>	4.5	13	3	11.5	0.007
	G1/4	<a href="#">6911 04 13</a>	5.5	16	3	10.5	0.011
6	M5x0.8	<a href="#">6911 06 19</a>	3	10	2.5	16	0.005
	G1/8	<a href="#">6911 06 10</a>	4.5	13	4	13	0.007
	G1/4	<a href="#">6911 06 13</a>	5.5	16	4	12.5	0.011
8	G1/8	<a href="#">6911 08 10</a>	4.5	13	5	20.5	0.011
	G1/4	<a href="#">6911 08 13</a>	5.5	16	6	19.5	0.016
	G3/8	<a href="#">6911 08 17</a>	5.5	21	6	18	0.022
10	G1/4	<a href="#">6911 10 13</a>	5.5	16	7	23	0.018
	G3/8	<a href="#">6911 10 17</a>	5.5	21	8	19.5	0.021
	G1/2	<a href="#">6911 10 21</a>	7	24	8	18	0.033
12	G3/8	<a href="#">6911 12 17</a>	5.5	21	9	27	0.029
	G1/2	<a href="#">6911 12 21</a>	7	24	10	22.5	0.035

## 6975 Stud Fitting, Male BSPT Thread



Stainless steel 316L, EPDM

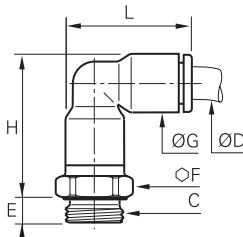


ØD	C		F	F1	H	Kg
4	R1/8	<a href="#">6975 04 10</a>	10	3	9.5	0.005
	R1/4	<a href="#">6975 04 13</a>	14	3	6.5	0.012
6	R1/8	<a href="#">6975 06 10</a>	10	4	11.5	0.005
	R1/4	<a href="#">6975 06 13</a>	14	4	8.5	0.011
8	R1/8	<a href="#">6975 08 10</a>	13	5	20	0.011
	R1/4	<a href="#">6975 08 13</a>	14	6	17	0.014
	R3/8	<a href="#">6975 08 17</a>	17	6	13	0.021
10	R1/4	<a href="#">6975 10 13</a>	16	7	20	0.017
	R3/8	<a href="#">6975 10 17</a>	17	8	16.5	0.019
	R1/2	<a href="#">6975 10 21</a>	21	8	14	0.037
12	R3/8	<a href="#">6975 12 17</a>	19	9	24	0.028
	R1/2	<a href="#">6975 12 21</a>	21	10	19.5	0.036

## 6959 Stud Elbow, Male BSPP and Metric Thread



Bio-based polymer, stainless steel 316L, EPDM



ØD	C		E	F	G	H	L	Kg
4	M5x0.8	<a href="#">6959 04 19</a>	3.5	10	8.5	23	19	0.009
	G1/8	<a href="#">6959 04 10</a>	4.5	13	8.5	22.5	19	0.009
	G1/4	<a href="#">6959 04 13</a>	5.5	16	8.5	22.5	19	0.014
6	M5x0.8	<a href="#">6959 06 19</a>	3.5	10	10.5	26.5	22.5	0.008
	G1/8	<a href="#">6959 06 10</a>	4.5	13	10.5	26.5	22.5	0.011
	G1/4	<a href="#">6959 06 13</a>	5.5	16	10.5	26.5	22.5	0.016
8	G1/8	<a href="#">6959 08 10</a>	4.5	13	13.5	35	29.5	0.018
	G1/4	<a href="#">6959 08 13</a>	5.5	16	13.5	33	29.5	0.020
	G3/8	<a href="#">6959 08 17</a>	5.5	21	13.5	33	29.5	0.028
10	G1/4	<a href="#">6959 10 13</a>	5.5	16	16	40.5	34	0.029
	G3/8	<a href="#">6959 10 17</a>	5.5	21	16	39	34	0.037
	G1/2	<a href="#">6959 10 21</a>	7	24	16	39	34	0.042
12	G3/8	<a href="#">6959 12 17</a>	5.5	21	19	42	40	0.040
	G1/2	<a href="#">6959 12 21</a>	7	24	19	42	40	0.049

**Working Temperature:** -10°C to +130°C for O.D.4, 6 and 8 mm  
-10°C to +95°C for all other diameters

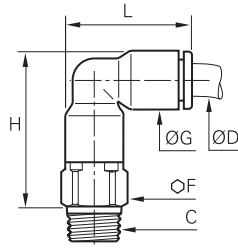
# Stud Fittings with Stainless Steel Adaptor,



## 6979 Stud Elbow, Male BSPT Thread



Bio-based polymer, stainless steel  
316L, EPDM



ØD	C		F	G	H	L	Kg
4	R1/8	<a href="#">6979 04 10</a>	10	8.5	23	19	0.008
	R1/4	<a href="#">6979 04 13</a>	14	8.5	23.5	19	0.018
6	R1/8	<a href="#">6979 06 10</a>	10	10.5	27	22.5	0.010
	R1/4	<a href="#">6979 06 13</a>	14	10.5	27.5	22.5	0.020
8	R1/8	<a href="#">6979 08 10</a>	13	13.5	33.5	29.5	0.018
	R1/4	<a href="#">6979 08 13</a>	14	13.5	32.5	29.5	0.022
10	R3/8	<a href="#">6979 08 17</a>	17	13.5	33	29.5	0.032
	R1/4	<a href="#">6979 10 13</a>	15	16	39.5	34	0.031
	R3/8	<a href="#">6979 10 17</a>	17	16	39.5	34	0.041
12	R1/2	<a href="#">6979 10 21</a>	21	16	39.5	34	0.060
	R3/8	<a href="#">6979 12 17</a>	19	19	45.5	40.5	0.051
	R1/2	<a href="#">6979 12 21</a>	21	19	45.5	40.5	0.065

### Male Straight Push-In Fitting with Metal Adaptor

Dedicated for temperatures up to +150°C and 10 bar working pressure  
FKM seal, FDA certification  
Available on demand for O.D. 4 mm and 6 mm



+150°C

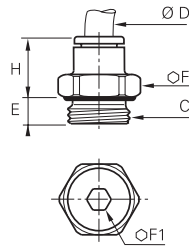
**Working Temperature:** -10°C to +130°C for O.D.4, 6 and 8 mm  
-10°C to +95°C for all other diameters

# Stud Fittings with FDA Chemical Nickel-Plated Brass Adaptor

## 6901 Stud Fitting, Male BSPP and Metric Thread



FDA chemical nickel-plated brass, EPDM

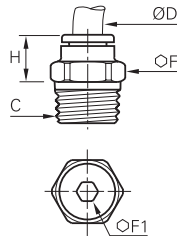


ØD	C		E	F	F1	H	kg
4	M5x0.8	<a href="#">6901 04 19</a>	3	8	2.5	14	0.003
	G1/8	<a href="#">6901 04 10</a>	5.5	13	3	11.5	0.007
6	M5x0.8	<a href="#">6901 06 19</a>	3	10	2.5	16	0.005
	G1/8	<a href="#">6901 06 10</a>	4.5	13	4	13	0.007
6	G1/4	<a href="#">6901 06 13</a>	5.5	16	4	12.5	0.011
	G1/8	<a href="#">6901 08 10</a>	4.5	13	5	20.5	0.011
8	G1/4	<a href="#">6901 08 13</a>	5.5	16	6	19.5	0.016
	G3/8	<a href="#">6901 08 17</a>	5.5	20	6	18	0.022
8	G1/4	<a href="#">6901 10 13</a>	5.5	16	7	23	0.018
	G3/8	<a href="#">6901 10 17</a>	5.5	20	8	19.5	0.021
10	G1/2	<a href="#">6901 10 21</a>	7	24	8	18	0.033
	G1/2	<a href="#">6901 12 21</a>	7	24	10	22.5	0.035

## 6905 Stud Fitting, Male BSPT Thread



FDA chemical nickel-plated brass, EPDM

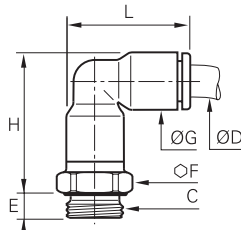


ØD	C		F	F1	H	kg
6	R1/8	<a href="#">6905 06 10</a>	10	4	11.5	0.005
	R1/4	<a href="#">6905 06 13</a>	14	4	8.5	0.011
6	R1/8	<a href="#">6905 08 10</a>	13	5	20	0.011
	R1/4	<a href="#">6905 08 13</a>	14	6	17	0.014
6	R3/8	<a href="#">6905 08 17</a>	17	6	13	0.021
	R1/4	<a href="#">6905 10 13</a>	16	7	20	0.017
10	R3/8	<a href="#">6905 10 17</a>	17	8	16.5	0.019
	R3/8	<a href="#">6905 12 17</a>	19	9	24	0.028
12	R1/2	<a href="#">6905 12 21</a>	21	10	19.5	0.036

## 6999 Stud Elbow, Male BSPP and Metric Thread



Bio-based polymer, FDA chemical nickel-plated brass, EPDM



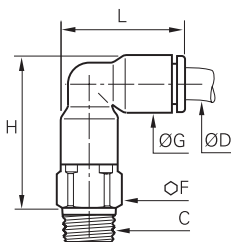
ØD	C		E	F	G	H	L	kg
4	M5x0.8	<a href="#">6999 04 19</a>	3.5	8	8.5	23	19	0.005
	G1/8	<a href="#">6999 04 10</a>	4.5	13	8.5	22.5	19	0.009
	G1/4	<a href="#">6999 04 13</a>	5.5	16	8.5	22.5	19	0.014
6	M5x0.8	<a href="#">6999 06 19</a>	3.5	10	10.5	26.5	22.5	0.008
	G1/8	<a href="#">6999 06 10</a>	4.5	13	10.5	26.5	22.5	0.011
	G1/4	<a href="#">6999 06 13</a>	5.5	16	10.5	26.5	22.5	0.016
6	G1/8	<a href="#">6999 08 10</a>	4.5	13	13.5	35	29.5	0.018
	G1/4	<a href="#">6999 08 13</a>	5.5	16	13.5	33	29.5	0.020
	G3/8	<a href="#">6999 08 17</a>	5.5	20	13.5	33	29.5	0.028
10	G1/4	<a href="#">6999 10 13</a>	5.5	16	16	40.5	34	0.029
	G3/8	<a href="#">6999 10 17</a>	5.5	20	16	39	34	0.037
12	G3/8	<a href="#">6999 12 17</a>	5.5	20	19	42	40	0.040
	G1/2	<a href="#">6999 12 21</a>	7	24	19	42	40	0.049

The body swivels for positioning purposes.

## 6909 Stud Elbow, Male BSPT Thread



Bio-based polymer, FDA chemical nickel-plated brass, EPDM



ØD	C		F	G	H	L	kg
6	R1/8	<a href="#">6909 06 10</a>	10	10.5	27	22.5	0.010
8	R1/4	<a href="#">6909 08 13</a>	14	13.5	32.5	29.5	0.022
10	R1/2	<a href="#">6909 10 21</a>	21	16	39.5	34	0.060
12	R1/2	<a href="#">6909 12 21</a>	21	19	45.5	40.5	0.065

The body swivels for positioning purposes.

**Working Temperature:** -10°C to +130°C for O.D.4, 6 and 8 mm  
-10°C to +95°C for all other diameters