

### Informations for ATEX-Directives

The rodless pneumatic cylinders of Parker Origa are the first linear drive unit, for that Ex range in the group of equipment II, Category 2 GD are certified.

Detail informations for use pneumatic components in Ex-Areas see leaflet A5P060E "EU Directive 94/9/EG (ATEX 95) for Pneumatic Components".

# Components for EX-Areas



### Technical Data (deviant to the Standard Cylinder)

Pressure quoted as gauge pressure

Characteristics	Symbol	Unit	Description
Ambient temperature range	$T_{min}$ $T_{max}$	°C °C	-10 +60
Max. switching frequency		Hz	1 (double stroke/s) Basic cylinder 0.5 (1stroke/s) Cylinder with guide
Operating pressure range	$p_{max}$	bar	Max. 8
Max. speed	$v_{max}$	m/s	3 Basic cylinder 2 Cylinder with guide
Medium			Filtered, unlubricated compressed air – free from water and dirt to ISO 8573-1 Solids: Class 7 particle size < 40 µm for Gas Water content: pressure dew point +3 °C, class 4, but at least 5 °C below minimum operating temperature
Noise level		dB (A)	70
Information for materials			Aluminium: see data sheet "Material"  Lubrication: see security data sheet "Grease for use in Cylinder with guides"  Sealing bands: Corrosion resistant steel

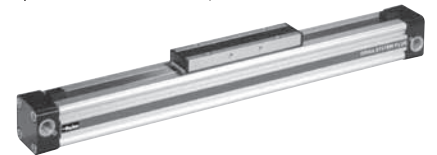
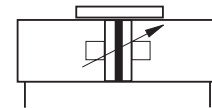
For all other details for dimensions, weights, allowable loads, cushioning diagrams and accessories see data sheets in this catalogue.

Equipment Group II Categorie 2GD			
Rodless cylinder: $\text{Ex}$ II 2GD c T4 T135°C -10°C ≤ Ta ≤ +60°C			
Series	Size	Stroke range	Accessories
OSP-P	Ø 10 to 80	1– 6000 mm	Mountings programme
SLIDELINE	Ø 16 to 80	1– 5500 mm	Mountings programme

**OSP**  
ORIGA  
SYSTEM  
PLUS

## Rodless Cylinder Ø 10 – 80 mm Basic Cylinder

Series: OSP-P ....ATEX



## Plain Bearing Guide SLIDELINE Ø 16 – 80 mm

Series: SL -..ATEX



**ARA**<sup>®</sup>  
PNEUMATIK

53-012 Wrocław tel. 71 364 72 82  
ul. Wyścigowa 38 fax 71 364 72 83

www.arapneumatik.pl



## Order Instructions – ATEX-ZYLINDER

1-4	5+6	7	8	9	10	11	12-16	17	18	19	20	21	22	23	24	25
<b>OSPP</b>	25	0	0	0	0	0	01100	0	0	0	0	0	0	0	0	0

Piston-Ø
10
16
25
32
40
50
63
80

Stroke
Input in mm (5 digits)

Piston Mounting
0 without
1 clevis mounting Ø 16-80

add. Guide Carriage
0 without
2 Guide Carriage Slideline SL Ø 16-80

Measuring system
0 without

Screws
0 standard
1 Stainless

Cushioning
0 standard
1 max. length <sup>2)</sup>

Version / Piston
6 ATEX standard
7 ATEX Tandem

Lubrication
0 standard
1 Slow speed <sup>1) 2)</sup>

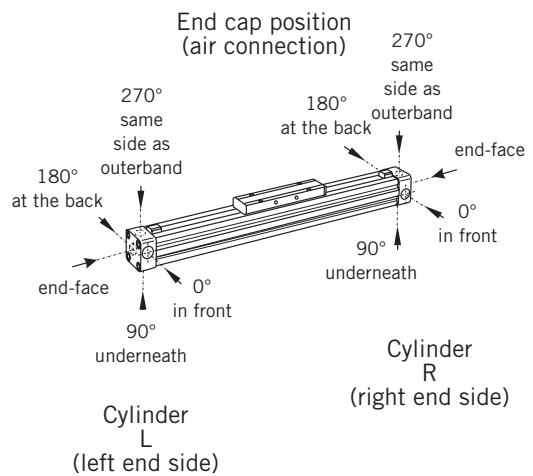
End cap position
0 l+r 0° = in front
1 l+r 90° = underneath
2 l+r 180° = at the back
3 l+r 270° = same side as outerband
4 l 90° = underneath; r 0° = in front
5 l 180° = at the back; r 0° = in front
6 l 270° = same side as outerband; r 0° = in front
7 l 0° = in front; r 90° = underneath
8 l 180° = at the back; r 90° = underneath
9 l 270° = same side as outerband; r 90° = underneath
A l 0° = in front; r 180° = at the back
B l 90° = underneath; r 180° = at the back
C l 270° = same side as outerband; r 180° = at the back
D l 0° = in front; r 270° = same side as outerband
E l 90° = underneath; r 270° = same side as outerband
F l 180° = at the back; r 270° = same side as outerband

Guides/ Brakes/ Inversion
0 without
2 Slideline SL Ø 16-80
M Inversion

Cover / Cable Channel
0 standard
1 Cable channel
2 Cable channel two-sided
X without cover rail

Air Connection
0 Standard
1 end face
2 both at one end
3 left stand. right end face
4 right stand. left end face

Seals
0 standard (NBR)
1 Viton® <sup>1)</sup>



<sup>1)</sup> Slow speed lubrication in combination with Viton® seals on demand.

<sup>2)</sup> „Lubrication slow speed“ in combination with „max. cushioning length“ not possible.

# ARA®

**PNEUMATIK**

53-012 Wrocław tel. 71 364 72 82  
ul. Wyścigowa 38 fax 71 364 72 83

[www.arapneumatik.pl](http://www.arapneumatik.pl)

