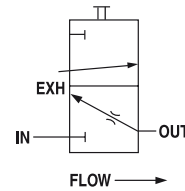
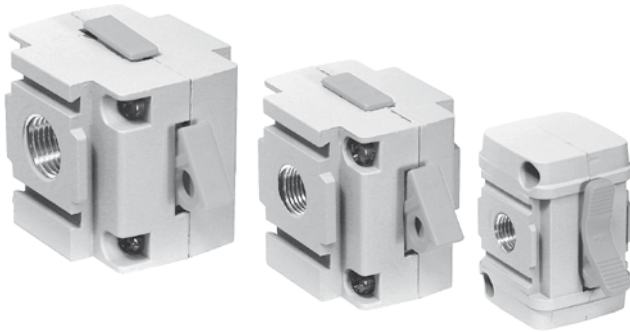


Global Air Preparation System

Safety Lockout Valves



Features

- The Safety Lockout valve is a manually operated, slide-type, 2-position, 3-way valve. In the closed position, downstream air pressure is exhausted to atmosphere.
- The valve slide can be locked in the closed position with a customer supplied padlock.
- The Safety Lockout valves conform to OSHA #29 CFR part 1910 – control of hazardous energy source (lockout / tagout).
- Left to right flow — orange slide
- Right to left — yellow slide

Ordering Information

Model type	Port size	Thread type	Flow dm ³ /s (scfm)	Safety Lockout Valve Flow from left to right	Safety Lockout Valve Flow from right to left
P31	1/4"	NPT	47.2 (100)	P31V*92LSAN	—
P32	1/4"	NPT	66.5 (141)	P32V*92LSAN	P32V*92LSBN
	3/8"	NPT	101.9 (216)	P32V*93LSAN	P32V*93LSBN
	1/2"	NPT	128.4 (272)	P32V*94LSAN	P32V*94LSBN
P33	1/2"	NPT	136.9 (290)	P33V*94LSAN	P33V*94LSBN
	3/4"	NPT	141.6 (300)	P33V*96LSAN	P33V*96LSBN

For thread type: BSPP **1**
 BSPT **2**
 NPT **9**

* Engineering Level will be entered at factory.

Materials of Construction

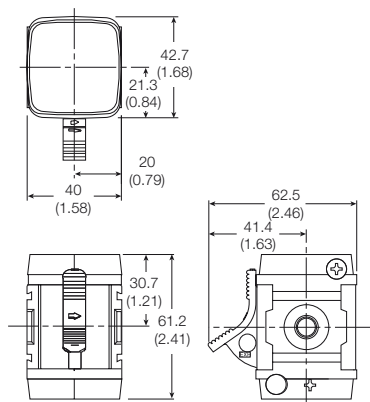
Body	Zinc
Blade	Acetal
Seals	Nitrile

Specifications

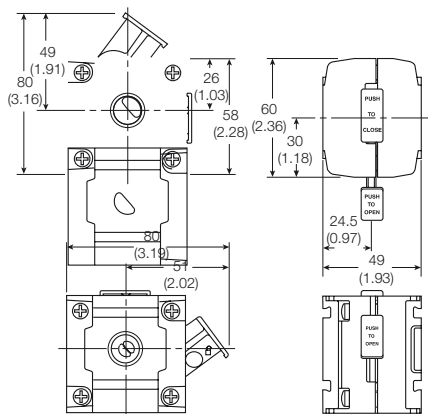
Operating temperature	P31: -10°C to 65.5°C (14°F to 150°F) P32/P33: -25°C to 65.5°C (-13°F to 150°F)
Max. supply pressure	10 bar (150 psig)
Port size	BSPP / BSPT / NPT 1/4, 3/8, 1/2, 3/4
Weight	P31: 0.30 kg (0.66 lbs) P32: 0.34 kg (0.74 lbs) P33: 0.41 kg (0.90 lbs)

Dimensions mm (inches)

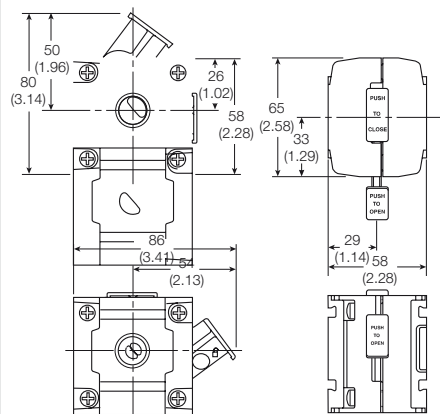
P31



P32



P33



Parker Dystrybutor:

ARA®

PNEUMATIK

53-012 Wrocław tel. 71 364 72 82
 ul. Wyciągowa 38 fax 71 364 72 83

www.arapneumatik.pl

