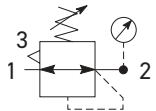
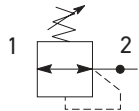


## P33 Regulators – Standard

- Integral 1/2" or 3/4" ports (NPT & BSPP)
- Robust but lightweight aluminum construction
- Secondary pressure ranges
- Secondary aspiration plus balanced poppet provides quick response and accurate pressure regulation
- Relieving & non-relieving types
- Non-rising knob



Self relieving regulator with gauge



Non-relieving regulator

Port Size	Description (relieving)	Gauge	Part Number
1/2"	125 psig (8 bar)	None	<b>P33RA14BNGP</b>
3/4"	125 psig (8 bar)	None	<b>P33RA16BNGP</b>

### Operating Information

Flow capacity\*:  
1/2, 3/4 233 scfm (110 dm<sup>3</sup>/s, ANR)

Operating temperature: -13°F to 150°F (-25°C to 65.5°C)

Supply pressure (max): 300 psig (20 bar)

Adjusting range pressure:  
0 to 30 psig (0 to 2 bar)  
0 to 60 psig (0 to 4 bar)  
0 to 125 psig (0 to 8 bar)  
0 to 250 psig (0 to 17 bar)

Gauge port (2 each): 1/4 NPT, BSPP, BSPT

Weight: 1.37 lb (0.62 kg)

\* Inlet pressure 145 psig (10 bar). Secondary pressure 91.3 psig (6.3 bar) and 14.5 psig (1 bar) pressure drop.

### Ordering Information:

**P33RA 1 6 B N G P**

<b>Basic Series</b> Global Modular Standard Regulator P33RA	<b>Thread Type</b> BSPP 1 NPT 9	<b>Port Size</b> 1/2 4 3/4 6	<b>Relief</b> Relieving B Non-Relieving N Reverse Flow-Relieving R	<b>Adjustment</b> Non-Rising Knob N	<b>Mounting</b> P Plastic Panel Mount Nut
---	---------------------------------------	------------------------------------	---	--	--

Adjustment Range	
With Round Gauge	
Z	30 psig; 2 bar; 0.2 MPa
M	60 psig; 4 bar; 0.4 MPa
G	125 psig; 8 bar; 0.8 MPa
J	250 psig; 17 bar; 1.7 MPa
Without Gauge	
Y	30 psig; 2 bar; 0.2 MPa
L	60 psig; 4 bar; 0.4 MPa
N	125 psig; 8 bar; 0.8 MPa
H	250 psig; 17 bar; 1.7 MPa

PARKER PREMIER DYSTRYBUTOR :



PARKER STORE WROCŁAW  
pneumatyka@arapneumatik.pl  
TEL. 71 364 72 80  
katowice@arapneumatik.pl  
TEL. 607 847 647

| arapneumatik.pl



Most Popular



**Material Specifications**

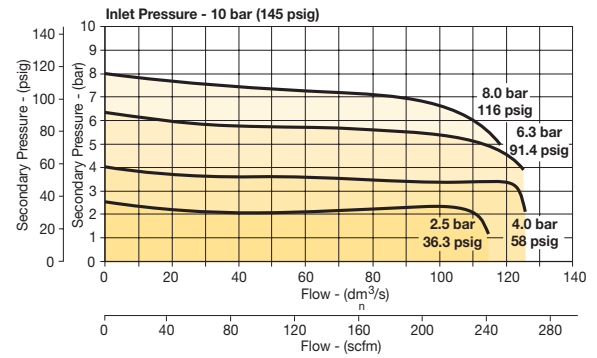
Body	Aluminum
Adjustment knob	Acetal
Body cap	ABS
Bonnet	Glass-filled nylon
Diaphragm assembly	Nitrile / zinc
Valve assembly	Brass / nitrile
Springs	Steel, stainless steel
Seals	Nitrile
Panel nut	Acetal

**Repair and Service Kits**

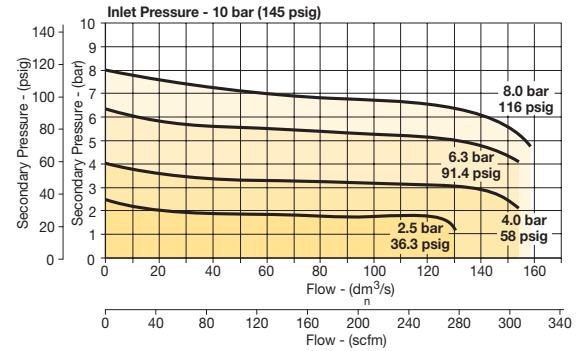
Panel mount nut - aluminum	<b>P33KA00MM</b>
Panel mount nut - plastic	<b>P33KA00MP</b>
Angle bracket (attaches via panel nut)	<b>P33KA00MR</b>
T-bracket with body connector	<b>P32KA00MT</b>
T-bracket	<b>P32KA00MB</b>
Body connector	<b>P32KA00CB</b>

**Flow Charts**

**P33RA 1/2" Regulator**



**P33RA 3/4" Regulator**

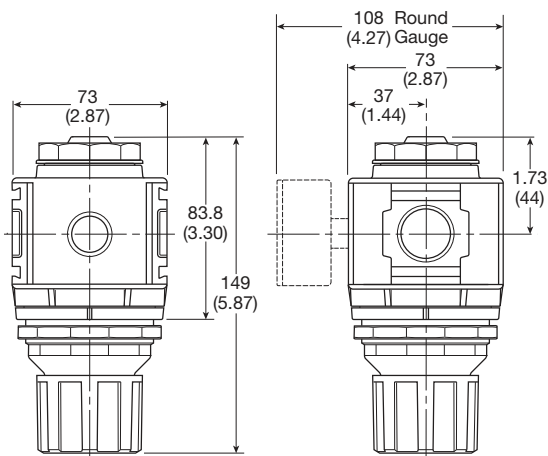


**WARNING**

Product rupture can cause serious injury.  
Do not connect regulator to bottled gas.  
Do not exceed Maximum primary pressure rating.

**CAUTION:**

**REGULATOR PRESSURE ADJUSTMENT** - The working range of knob adjustment is designed to permit outlet pressures within their full range. Pressure adjustment beyond this range is also possible because the knob is not a limiting device. This is a common characteristic of most industrial regulators, and limiting devices may be obtained only by special design. For best performance, regulated pressure should always be set by increasing the pressure up to the desired setting.



mm (Inches)

NOTE: 2.40 in. (61mm) hole required for panel nut mounting.

**Gauges**

50mm (2") round	0-60 psig / 0-4 bar	<b>P6G-ERB2040</b>
1/4" center back mount	0-160 psig / 0-14 bar	<b>P6G-ERB2140</b>
	0-300 psig / 0-20 bar	<b>P6G-ERB2200</b>

For best performance, regulated pressure should always be set by increasing the pressure up to the desired setting.

**Most Popular**

