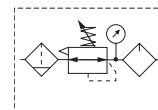


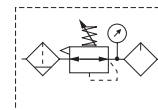
## P3Y Combinations - Large


**Filter + Regulator + Lubricator Combinations**  
**5 micron element, 12 bar (174 psig) regulator + gauge and wall mounting bracket**


Port Size	Flow <sup>‡</sup>	Weight lb (kg)	Combined Manual / Semi-Auto Drain <sup>†</sup>	Auto Drain <sup>†</sup>
3/4"	170 scfm (80.2 dm <sup>3</sup> /s, ANR)	7.3 (3.3)	<b>P3YCB16SECNFLNF</b>	<b>P3YCB16SEANFLNF</b>
1"	170 scfm (80.2 dm <sup>3</sup> /s, ANR)	7.3 (3.3)	<b>P3YCB18SECNFLNF</b>	<b>P3YCB18SEANFLNF</b>

<sup>†</sup> Standard part numbers shown in bold. For other models refer to Options chart below.

<sup>‡</sup> Flow with 10 bar (145 psig) inlet pressure, 6.3 bar (91.4 psig) set pressure and 1 bar (14.5 psig) pressure drop.

**Filter / Regulator + Lubricator Combinations**  
**5 micron element, 12 bar (174 psig) regulator + gauge and wall mounting bracket**


Port Size	Flow <sup>‡</sup>	Weight lb (kg)	Combined Manual / Semi-Auto Drain <sup>†</sup>	Auto Drain <sup>†</sup>
3/4"	315 scfm (148.2 dm <sup>3</sup> /s, ANR)	6.2 (2.8)	<b>P3YCA16SECNFLNF</b>	<b>P3YCA16SEANFLNF</b>
1"	390 scfm (184.1 dm <sup>3</sup> /s, ANR)	6.2 (2.8)	<b>P3YCA18SECNFLNF</b>	<b>P3YCA18SEANFLNF</b>

<sup>†</sup> Standard part numbers shown in bold. For other models refer to Options chart below.

<sup>‡</sup> Flow with 10 bar (145 psig) inlet pressure, 6.3 bar (91.4 psig) set pressure and 1 bar (14.5 psig) pressure drop.

## Ordering Information:

<b>P3YCA</b>	<b>1</b>	<b>8</b>	<b>SE</b>	<b>C</b>	<b>N</b>	<b>F</b>	<b>LNF</b>
<b>Basic Series</b> Filter / Regulator + Lubricator <b>P3YCA</b> Filter + Regulator + Lubricator <b>P3YCB</b>	<b>Thread Type*</b> BSPP <b>1</b> NPT <b>9</b>	<b>Port Size</b> 3/4 <b>6</b> 1 <b>8</b>	<b>Element</b> <b>E</b> 5 micron <b>G</b> 30 micron	<b>Drain Type</b> Combined Manual / Semi-Auto Drain <b>C</b> Auto Drain <b>A</b>	<b>Adjustment Range</b> <b>F</b> 0-12 bar (0 to 174 psi) with Gauge <b>J</b> 0-16 bar (0 to 232 psi) with Gauge		

\* Note: For 1-1/2" ported unit, please order P3YKA\*BCP port block kit separately.

**WARNING**

**Product rupture can cause serious injury.**  
**Do not connect regulator to bottled gas.**  
**Do not exceed Maximum primary pressure rating.**

**CAUTION:****REGULATOR PRESSURE ADJUSTMENT -**

The working range of knob adjustment is designed to permit outlet pressures within their full range. Pressure adjustment beyond this range is also possible because the knob is not a limiting device. This is a common characteristic of most industrial regulators, and limiting devices may be obtained only by special design. For best performance, regulated pressure should always be set by increasing the pressure up to the desired setting.

PARKER PREMIER DYSTRYBUTOR :

**ARA**<sup>®</sup>  
**PNEUMATIK**

| arapneumatik.pl

 PARKER STORE WROCŁAW  
 pneumatyka@arapneumatik.pl  
 TEL. 71 364 72 80  
 katowice@arapneumatik.pl  
 TEL. 607 847 647

**Parker Store**

Most Popular



## Popular Combination Dimensions mm (inches)

