

# Pressure Regulators

Parker Legris pressure regulators **stabilise at the maximum determined value** the pressure delivered to the pneumatic equipment, whatever the fluctuations of the pressure upstream.

## Product Advantages

**Ergonomics** | Easy adjustment of the output pressure through the knurled screw  
 Lockable adjustment possible  
 Output pressure adjustment options marked on the screw

**Energy Savings** | Setting of the optimum pressure enables the equipment to function correctly  
 Installation in a manifold allows optimum output pressures to be delivered to specific parts of the circuit  
 Designed for applications where cylinder force needs to be controlled: marking, sleeving, crimping cylinders etc.



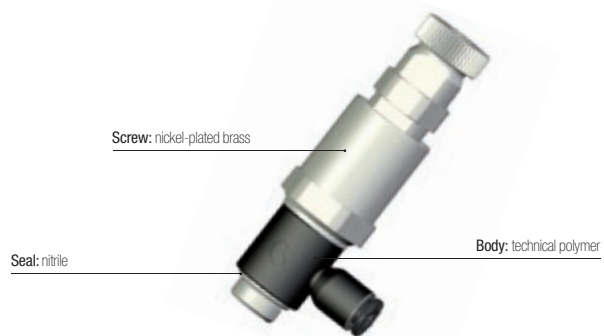
**Applications**  
 Robotics  
 Textile  
 Semi-Conductors  
 Packaging  
 Pneumatics

## Technical Characteristics

|                            |   |
|----------------------------|---|
| <b>Compatible Fluids</b>   | Compressed air  |
| <b>Working Pressure</b>    | Upstream pressure: 1 to 16 bar<br>Downstream pressure: 1 to 8 bar |
| <b>Working Temperature</b> | -10°C to +70°C  |

|                                |         |      |      |      |
|--------------------------------|---------|------|------|------|
| <b>Max. Tightening Torques</b> | Threads | G1/8 | G1/4 | G3/8 |
|                                | daN.m   | 0.4  | 0.5  | 0.6  |

### Component Materials



**Silicone-free**

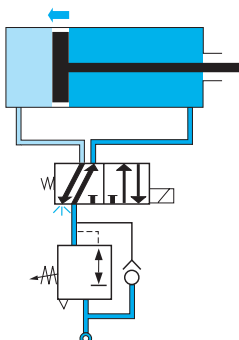
### Regulations

DI: 2002/95/EC (RoHS)  
 RG: 1907/2006 (REACH)  
 DI: 97/23/EC (PED)

## Operation

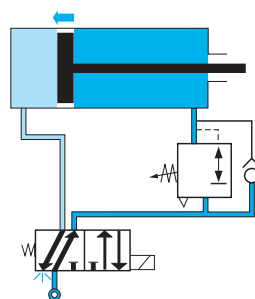
### Mounting Upstream of the Control Valve

Adjustment of the piston feed pressure in both directions

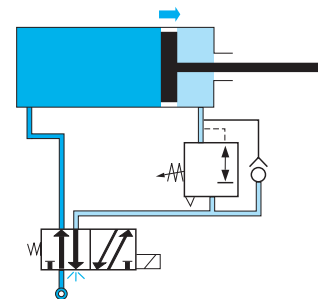


### Mounting Downstream of the Control Valve

**Phase 1:** adjustment of the piston speed in a single direction



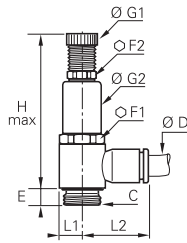
**Phase 2:** in return direction, pressure is supplied through the control valve



# Pressure Regulators

## 7300 Pressure Regulator, Male BSPP Thread

Technical polymer, nickel-plated brass, NBR



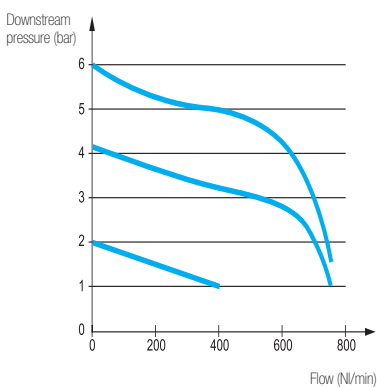
| ØD | C    |                            | E   | F1 | F2 | G1   | G2 | H <sub>max</sub> | L1   | L2   | Kg    |
|----|------|----------------------------|-----|----|----|------|----|------------------|------|------|-------|
| 4  | G1/8 | <a href="#">7300 04 10</a> | 4.5 | 17 | 13 | 14   | 17 | 65               | 7    | 18.5 | 0.047 |
| 6  | G1/8 | <a href="#">7300 06 10</a> | 4.5 | 17 | 13 | 14   | 17 | 65               | 7    | 20   | 0.047 |
|    | G1/4 | <a href="#">7300 06 13</a> | 7.5 | 17 | 13 | 14   | 17 | 74.5             | 9.5  | 22   | 0.065 |
| 8  | G1/8 | <a href="#">7300 08 10</a> | 4.5 | 17 | 13 | 14   | 17 | 65               | 7    | 25   | 0.048 |
|    | G1/4 | <a href="#">7300 08 13</a> | 7.5 | 17 | 13 | 14   | 17 | 74.5             | 9.5  | 27   | 0.066 |
| 10 | G3/8 | <a href="#">7300 08 17</a> | 8.5 | 22 | 17 | 18.5 | 22 | 84               | 11.5 | 28.5 | 0.122 |
|    | G1/4 | <a href="#">7300 10 13</a> | 7.5 | 17 | 13 | 14   | 17 | 74.5             | 9.5  | 29   | 0.067 |
|    | G3/8 | <a href="#">7300 10 17</a> | 8.5 | 22 | 17 | 18.5 | 22 | 84               | 11.5 | 30.5 | 0.122 |

**ARA**<sup>®</sup>  
**PNEUMATIK**  
 53-012 Wrocław tel. 71 364 72 82  
 ul. Wyciągowa 38 fax 71 364 72 83  
[www.arapneumatik.pl](http://www.arapneumatik.pl)

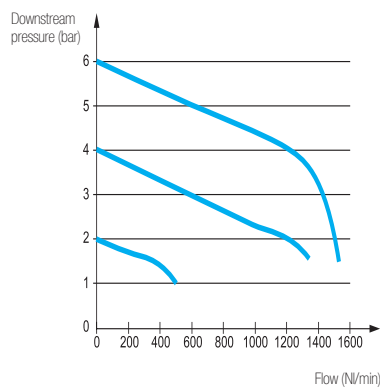


### Flow Characteristics at 7 bar (Nl/min)

#### G1/8 Models



#### G1/4 Models



#### G3/8 Models

