

# 5/2 and 5/3 Way Valves Series S10

*G1/8 and  
Push-In Connections  
OD 6 mm*

### Actuation systems:

- Pneumatic
- Electrical, pilot operated

### Versions:

- With biased position
- With external pilot air

### Accessories:

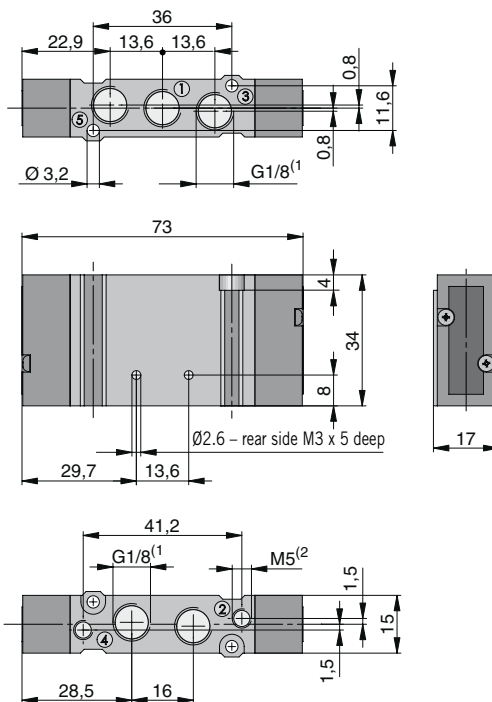
- Adapter plate for direct mounting on Parker -ORIGA profile-type cylinders
- Mounting bracket

For further information see page 41, 42

### Weight (mass) kg

Description	Type	Weight (mass)
Pneumatic, by permanent signal	S10 561R..-1/8	0.063 kg
Pneumatic, by impulse	S10 561(562)-1/8	0.063 kg
Electrical, by permanent signal	S10 581R..-1/8	0.076 kg
Electrical, by impulse	S10 581(582)-1/8	0.089 kg
Pneumatic, by permanent signal	S10 561R..-Q6	0.070 kg
Pneumatic, by impulse	S10 561(562)-Q6	0.070 kg
Electrical, by permanent signal	S10 581R..-Q6	0.083 kg
Electrical, by impulse	S10 581(582)-Q6	0.097 kg

### 5/2 and 5/3 Way Valve, pneumatically actuated – threaded version Type: S10 561..-1/8, S10 562..-1/8, S10 561RF.-1/8



<sup>(1)</sup> thread depth 7.5 mm  
<sup>(2)</sup> thread depth 5 mm



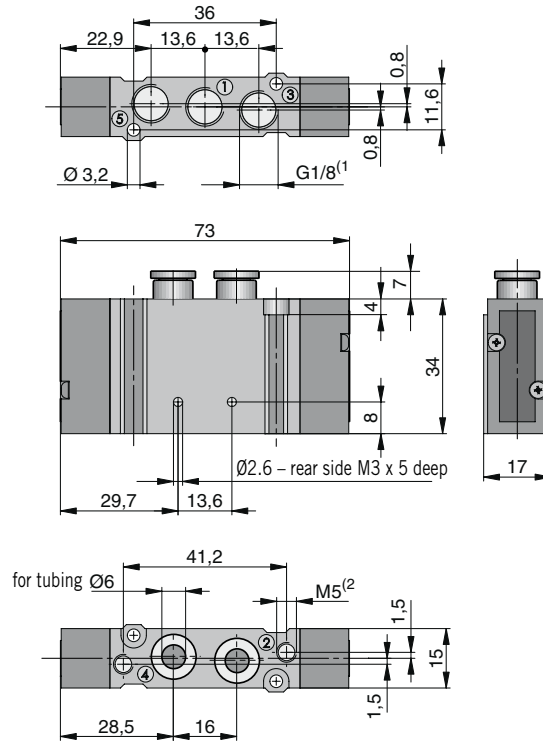
**ARA**<sup>®</sup>  
**PNEUMATIK**

53-012 Wrocław tel. 71 364 72 82  
ul. Wyciągowa 38 fax 71 364 72 83

[www.arapneumatik.pl](http://www.arapneumatik.pl)



**5/2 and 5/3 Way Valve, pneumatically actuated – version with push-in connections**  
**Type: S10 561..-Q6, S10 562..-Q6, S10 561RF.-Q6**

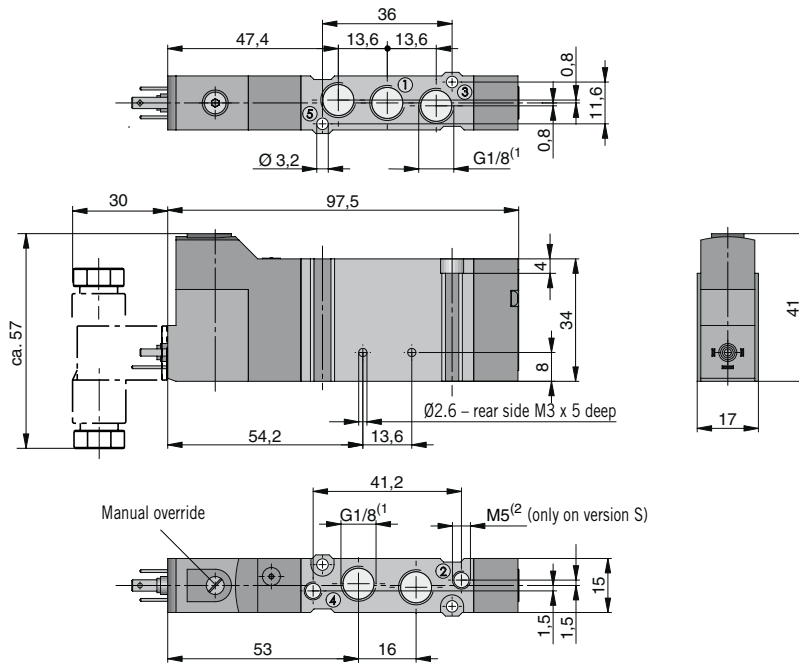


<sup>(1)</sup> thread depth 7.5 mm  
<sup>(2)</sup> thread depth 5 mm

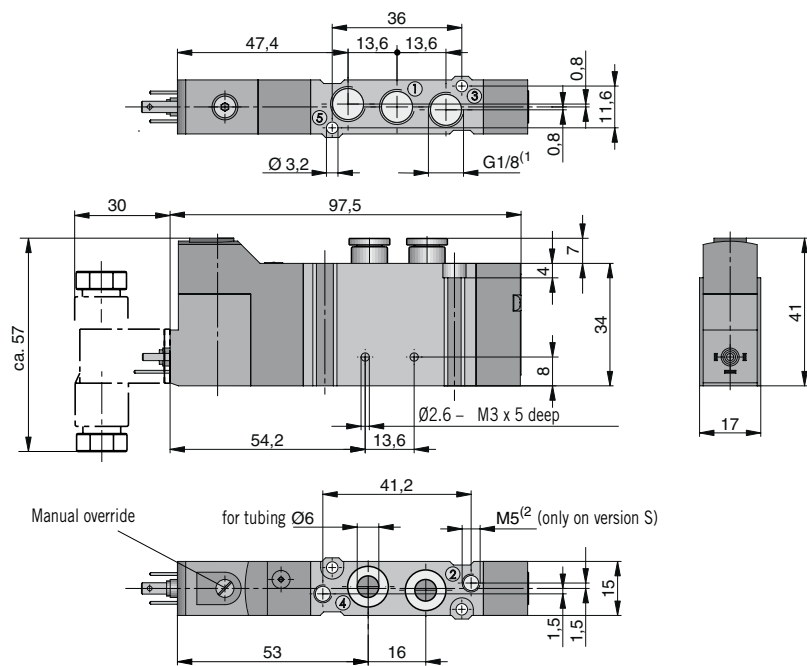
For valve manifolds see page 32-34, for RPS manifolds see page 38, for mounting bracket see page 41, for adapter plate see page 41

Dimensions in mm

**5/2 Way Valve, electrically actuated (permanent signal) – threaded version**  
**Type: S10 581...-1/8**



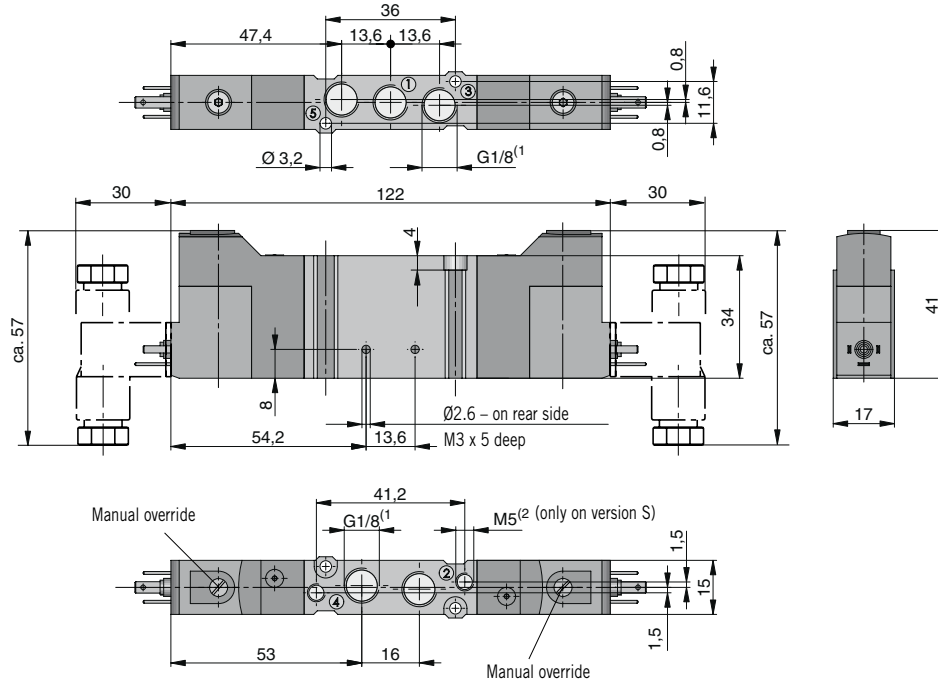
**5/2 Way Valve, electrically actuated (permanent signal) – version with push-in connections**  
**Type: S10 581...-Q6**



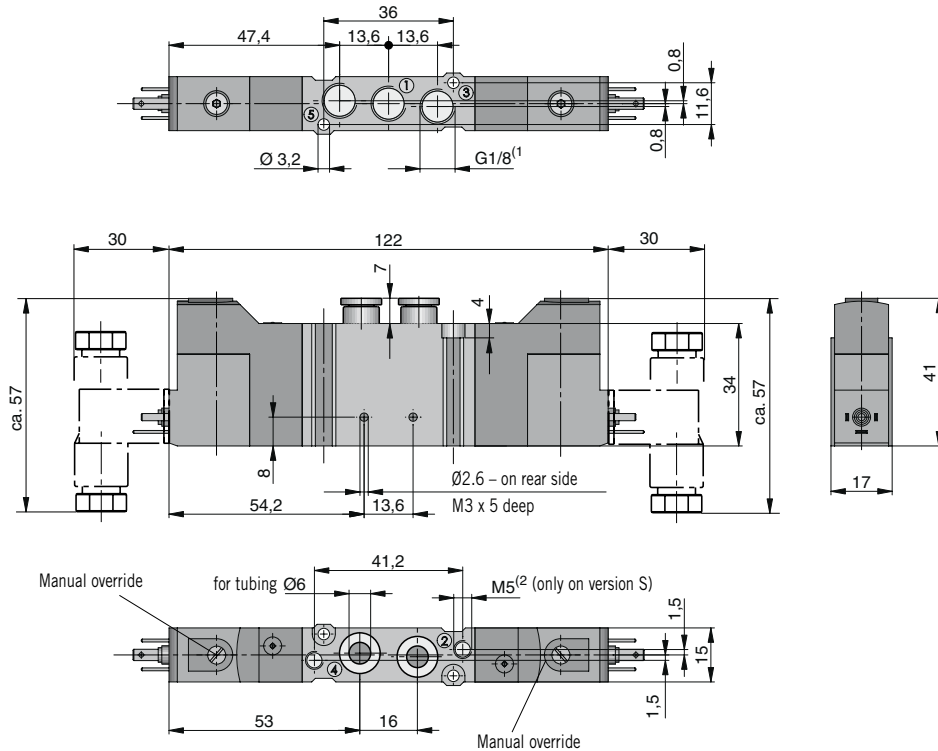
For valve manifolds see page 32-34, for RPS manifolds see page 38, for mounting bracket see page 41,  
 for adapter plate see page 41

Dimensions in mm

**5/2 Way Valve, electrically actuated (impulse) – threaded version, Type: S10 581-1/8, S10 582-1/8**  
**5/3 Way Valve, electrically actuated (permanent signal) – threaded version, Type: S10 581RF-1/8**



**5/2 Way Valve, electrically actuated (impulse) – version with push-in connections, Type: S10 581-Q6, S10 582-Q6**  
**5/3 Way Valve, electrically actuated (permanent signal) – version with push-in connections, Type: S10 581RF-Q6**



For valve manifolds see page 32, 34, for RPS manifolds see page 38, for mounting bracket see page 41, for adapter plate see page 41

Dimensions in mm

# 5/2 and 5/3 Way Valves Series S10

*G1/4 and  
Push-In Connections  
OD 8 mm*

### Actuation systems:

- Pneumatic
- Electrical pilot actuated

### Versions:

- With biased position
- With external pilot air

### Accessories:

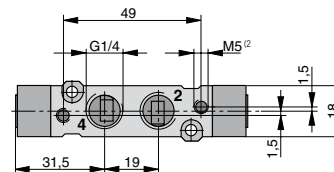
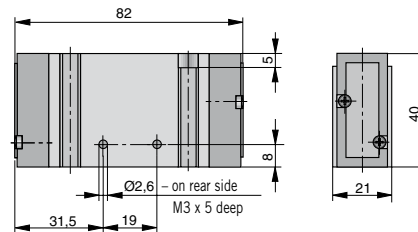
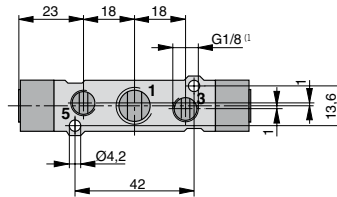
- Adapter plate for direct mounting on Parker Origa profile-type cylinders
- Mounting bracket

For further information see page 41, 42

### Weight (mass) kg

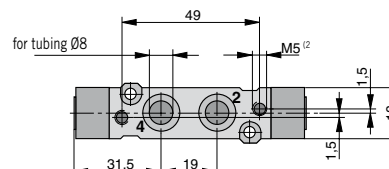
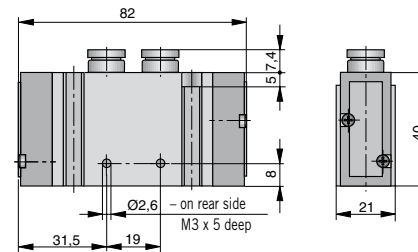
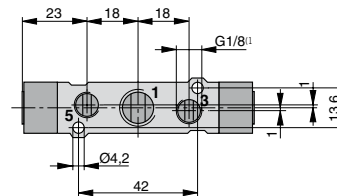
Description	Type	Weight (mass)
Pneumatic, by permanent signal	S10 561R..-1/4	0.097 kg
Pneumatic, by impulse	S10 561(562)-1/4	0.097 kg
Electrical, by permanent signal	S10 581R..-1/4	0.110 kg
Electrical, by impulse	S10 581(582)-1/4	0.125 kg
Pneumatic, by permanent signal	S10 561R..-Q8	0.118 kg
Pneumatic, by impulse	S10 561(562)-Q8	0.118 kg
Electrical, by permanent signal	S10 581R..-Q8	0.132 kg
Electrical, by impulse	S10 581(582)-Q8	0.147 kg

### 5/2 and 5/3 Way Valve, pneumatically actuated, threaded version Type: S10 561..-1/4, S10 562..-1/4, S10 561RF.-1/4



- <sup>(1)</sup> thread depth 7.5 mm
- <sup>(2)</sup> thread depth 5 mm

### 5/2 and 5/3 Way Valve, pneumatically actuated, version with push-in connections Type: S10 561..-Q8, S10 562..-Q8, S10 561RF.-Q8



- <sup>(1)</sup> thread depth 7.5 mm
- <sup>(2)</sup> thread depth 5 mm

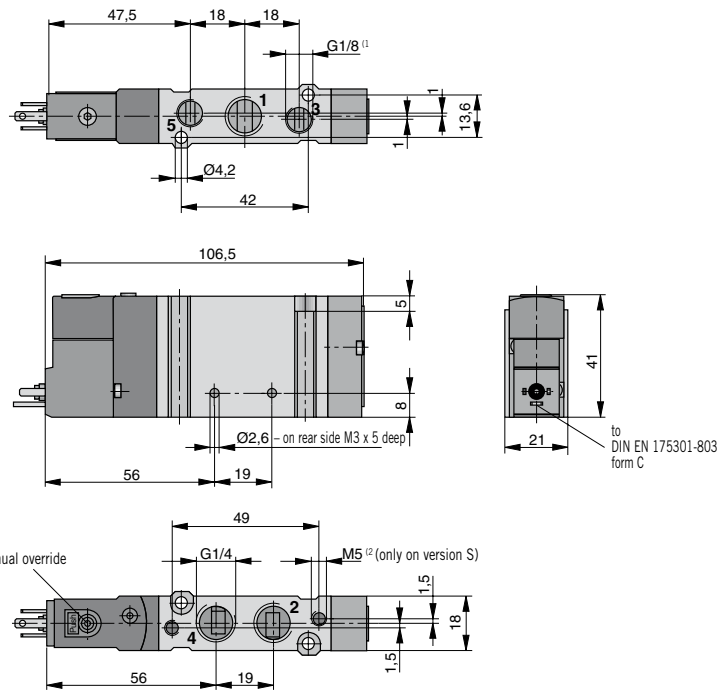
**ARA**  
PNEUMATIK

53-012 Wrocław tel. 71 364 72 82  
ul. Wyscigowa 38 fax 71 364 72 83

www.arapneumatik.pl

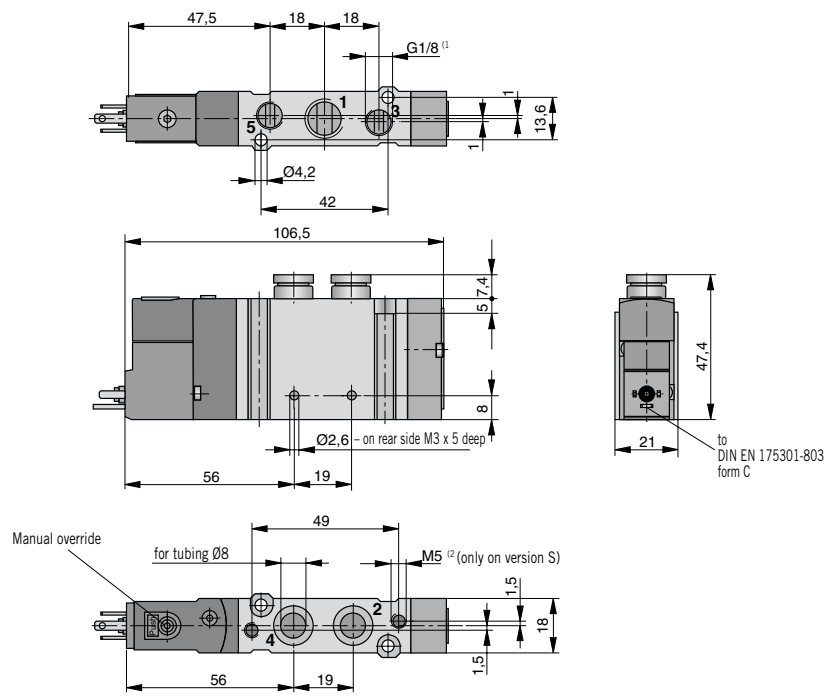


**5/2 Way Valve, electrically actuated (permanent signal) – threaded version**  
**Type: S10 581...-1/4**



<sup>1</sup> thread depth 7.5 mm  
<sup>2</sup> thread depth 5 mm

**5/2 Way Valve, electrically actuated (permanent signal) – version with push-in connections**  
**Type: S10 581...-Q8**

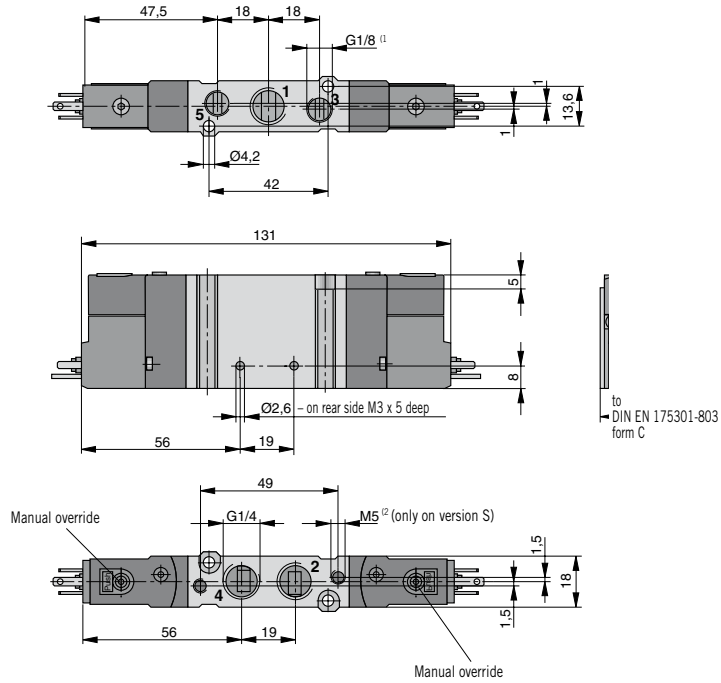


<sup>1</sup> thread depth 7.5 mm  
<sup>2</sup> thread depth 5 mm

For RPS manifolds see page 39, for mounting bracket see page 41,  
 for adapter plate see page 41

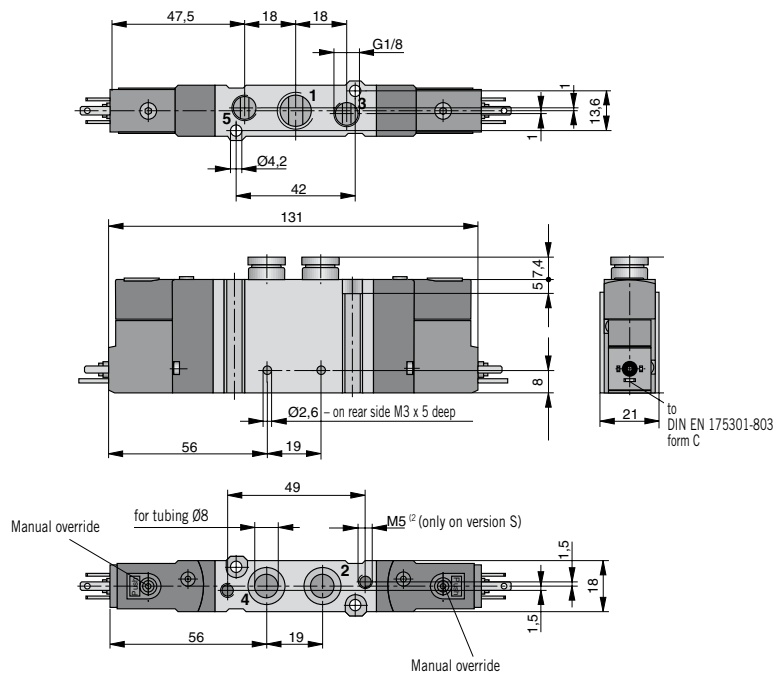
Dimensions in mm

**5/2 Way Valve, electrically actuated (impulse) – threaded version Type: S10 581-1/4, S10 582-1/4**  
**5/3 Way Valve, electrically actuated (permanent signal) – threaded version Type: S10 581RF-1/4**



<sup>(1)</sup> thread depth 7.5 mm  
<sup>(2)</sup> thread depth 5 mm

**5/2 Way Valve, electrically actuated (impulse) – version with Push-In Connections Type: S10 581-Q6, S10 582-Q8**  
**5/3 Way Valve, electrically actuated (permanent signal) – version with Push-In Connections Type: S10 581RF-Q8**



<sup>(1)</sup> thread depth 7.5 mm  
<sup>(2)</sup> thread depth 5 mm

For RPS manifolds see page 39, for mounting bracket see page 41,  
 for adapter plate see page 41

Dimensions in mm

**Order Instructions – 5/2 Way Valves, Series S10..-1/8, S10..-1/4, S10..-Q6, S10..-Q8**

Actuation System	Symbol	Connections		Order Instructions		Page	
		Thread	Push-In Connections	Type	Order No.		
Pneumatic by permanent signal		G1/8	–	S10 561RF-1/8	PA 10410	22, 23	
		–	ODØ 6mm	S10 561RF-Q6	PA 10440	22, 23	
		G1/4	–	S10 561RF-1/4	PA 10530	26	
	Pneumatic by impulse		–	ODØ 8mm	S10 561RF-Q8	PA 10560	26
			G1/8	–	S10 561R-1/8	PA 10411	22, 23
			–	ODØ 6mm	S10 561R-Q6	PA 10441	22, 23
– with biased position			G1/4	–	S10 561R-1/4	PA 10531	26
			–	ODØ 8mm	S10 561R-Q8	PA 10561	26
			G1/8	–	S10 561-1/8	PA 10412	22, 23
	Electrical by permanent signal		–	ODØ 6mm	S10 561-Q6	PA 10442	22, 23
			G1/4	–	S10 561-1/4	PA 10532	26
			–	ODØ 8mm	S10 561-Q8	PA 10562	26
– with biased position			G1/8	–	S10 562-1/8	PA 10413	22, 23
			–	ODØ 6mm	S10 562-Q6	PA 10443	22, 23
			G1/4	–	S10 562-1/4	PA 10533	26
	Electrical by impulse		–	ODØ 8mm	S10 562-Q4	PA 10563	26
			G1/8	–	S10 581RF-1/8-□33-□	PA 10390-□33-□	24
			–	ODØ 6mm	S10 581RF-Q6-□33-□	PA 10420-□33-□	24
– with biased position			G1/4	–	S10 581RF-1/4-□33-□	PA 10510-□33-□	27
			–	ODØ 8mm	S10 581RF-Q8-□33-□	PA 10540-□33-□	27
			G1/8	–	S10 581R-1/8-□33-□	PA 10392-□33-□	24
	Electrical by permanent signal with external pilot air		–	ODØ 6mm	S10 581R-Q6-□33-□	PA 10392-□33-□	24
			G1/4	–	S10 581R-1/4-□33-□	PA 10512-□33-□	27
			–	ODØ 8mm	S10 581R-Q8-□33-□	PA 10542-□33-□	27
– with biased position			G1/8	–	S10 581S-RF-1/8-□33-□	PA 10391-□33-□	24
			–	ODØ 6mm	S10 581S-RF-Q6-□33-□	PA 10421-□33-□	24
			G1/4	–	S10 581S-RF-1/4-□33-□	PA 10511-□33-□	27
	Electrical by impulse		–	ODØ 8mm	S10 581S-RF-Q8-□33-□	PA 10541-□33-□	27
			G1/8	–	S10 581S-R-1/8-□33-□	PA 10393-□33-□	24
			–	ODØ 6mm	S10 581S-R-Q6-□33-□	PA 10423-□33-□	24
– with biased position			G1/4	–	S10 581S-R-1/4-□33-□	PA 10513-□33-□	27
			–	ODØ 8mm	S10 581S-R-Q8-□33-□	PA 10543-□33-□	27
			G1/8	–	S10 581-1/8-□33-□	PA 10394-□33-□	25
	Electrical by impulse with external pilot air		–	ODØ 6mm	S10 581-Q6-□33-□	PA 10424-□33-□	25
			G1/4	–	S10 581-1/4-□33-□	PA 10514-□33-□	27
			–	ODØ 8mm	S10 581-Q8-□33-□	PA 10544-□33-□	27
– with biased position			G1/8	–	S10 582-1/8-□33-□	PA 10396-□33-□	25
			–	ODØ 6mm	S10 582-Q6-□33-□	PA 10426-□33-□	25
			G1/4	–	S10 582-1/4-□33-□	PA 10516-□33-□	27
	Electrical by impulse with external pilot air		–	ODØ 8mm	S10 582-Q8-□33-□	PA 10546-□33-□	27
			G1/8	–	S10 581S-1/8-□33-□	PA 10395-□33-□	25
			–	ODØ 6mm	S10 581S-Q6-□33-□	PA 10425-□33-□	25
– with biased position			G1/4	–	S10 581S-1/4-□33-□	PA 10515-□33-□	27
			–	ODØ 8mm	S10 581S-Q8-□33-□	PA 10545-□33-□	27
			G1/8	–	S10 582S-1/8-□33-□	PA 10397-□33-□	25
	– with biased position		–	ODØ 6mm	S10 582S-Q6-□33-□	PA 10427-□33-□	25
			G1/4	–	S10 582S-1/4-□33-□	PA 10517-□33-□	27
			–	ODØ 8mm	S10 582S-Q8-□33-□	PA 10547-□33-□	27

Supplements on types and order no. see page 29

**Notes on ordering:**

All electrically actuated valves are supplied **without** connector as standard.

– **please include this in Order No. or order it separately (see Order Instructions).**

For electrically actuated valves please complete the Type Designation and Order No. with the order codes.

**Example:**

5/2 Way Valve, Push-In Connections, electrically actuated, with spring return, voltage 24 V DC, with standard connector.

**Order Instructions:**

**S10 581RF-Q6-0233-88**

**PA 10420-0233-88**



**Order Instructions – 5/3 Way Valves, Series S10..-1/8, S10..-1/4, S10..-Q6, S10..-Q8**

Actuation System	Symbol	Connections		Order Instructions		Page
		Thread	Push-In	Type	Order No.	
Pneumatic permanent signal		G1/8	–	S10561RFG-1/8	PA 10414	23
		–	ODØ 6mm	S10561RFG-Q6	PA 10444	23
		G1/4	–	S10561RFG-1/4	PA 10534	26
		–	ODØ 8mm	S10561RFG-Q8	PA 10564	26
		G1/8	–	S10561RFE-1/8	PA 10415	23
		–	ODØ 6mm	S10561RFE-Q6	PA 10445	23
		G1/4	–	S10561RFE-1/4	PA 10535	26
		–	ODØ 8mm	S10561RFE-Q8	PA 10565	26
		G1/8	–	S10561RFB-1/8	PA 10416	23
		–	ODØ 6mm	S10561RFB-Q6	PA 10446	23
		G1/4	–	S10561RFB-1/4	PA 10536	26
		–	ODØ 8mm	S10561RFB-Q8	PA 10566	26
Electrical permanent signal		G1/8	–	S10581RFG-1/8-□33-□	PA 10398-□33-□	25
		–	ODØ 6mm	S10581RFG-Q6-□33-□	PA 10428-□33-□	25
		G1/4	–	S10581RFG-1/4-□33-□	PA 10518-□33-□	28
		–	ODØ 8mm	S10581RFG-Q8-□33-□	PA 10548-□33-□	28
		G1/8	–	S10581RFE-1/8-□33-□	PA 10400-□33-□	25
		–	ODØ 6mm	S10581RFE-Q6-□33-□	PA 10430-□33-□	25
		G1/4	–	S10581RFE-1/4-□33-□	PA 10520-□33-□	28
		–	ODØ 8mm	S10581RFE-Q8-□33-□	PA 10550-□33-□	28
		G1/8	–	S10581RFB-1/8-□33-□	PA 10402-□33-□	25
		–	ODØ 6mm	S10581RFB-Q6-□33-□	PA 10432-□33-□	25
		G1/4	–	S10581RFB-1/4-□33-□	PA 10522-□33-□	28
		–	ODØ 8mm	S10581RFB-Q8-□33-□	PA 10552-□33-□	28
Electrical permanent signal with external pilot air		G1/8	–	S10581S-RFG-1/8-□33-□	PA 10399-□33-□	25
		–	ODØ 6mm	S10581S-RFG-Q6-□33-□	PA 10429-□33-□	25
		G1/4	–	S10581S-RFG-1/4-□33-□	PA 10519-□33-□	28
		–	ODØ 8mm	S10581S-RFG-Q8-□33-□	PA 10549-□33-□	28
		G1/8	–	S10581S-RFE-1/8-□33-□	PA 10401-□33-□	25
		–	ODØ 6mm	S10581S-RFE-Q6-□33-□	PA 10431-□33-□	25
		G1/4	–	S10581S-RFE-1/4-□33-□	PA 10521-□33-□	28
		–	ODØ 8mm	S10581S-RFE-Q8-□33-□	PA 10551-□33-□	28
		G1/8	–	S10581S-RFB-1/8-□33-□	PA 10403-□33-□	25
		–	ODØ 6mm	S10581S-RFB-Q6-□33-□	PA 10433-□33-□	25
		G1/4	–	S10581S-RFB-1/4-□33-□	PA 10523-□33-□	28
		–	ODØ 8mm	S10581S-RFB-Q8-□33-□	PA 10553-□33-□	28

**Solenoid version/  
voltage**

– for connector
00 without solenoid
01 12 VDC
02 24 VDC
04 48 VDC
07 110 VDC
50 12 VAC
51 24 VAC
55 48 VAC
57 110 VAC
61 230 VAC
– with cable (length 1 m)
41 12 VDC
42 24 VDC
71 12 VAC
72 24 VAC

Other voltages available on request

**Notes on ordering:**

all electrically actuated valves are supplied **without** connector as standard

– **please include this in Order No. or order it separately (see Order Instructions).**

For electrically actuated valves please complete the Type Designation and Order No. with the order codes.

**Example:**

5/3 Way Valve, middle position closed, Push-In Connections, electrically actuated, with spring return, voltage 230V AC, without connector.

**Order Instructions:**

**S10581RFG-Q6-6133-00**

**PA 10428-6133-00**

**Variants  
connector**

00	without connector *
88	standard connector 15mm
89	230 V AC with LED and protective circuit
92	24 V DC with LED and protective circuit

\* Standard version

**ARA**<sup>®</sup>  
**PNEUMATIK**

53-012 Wrocław tel. 71 364 72 82  
ul. Wyscigowa 38 fax 71 364 72 83  
[www.arapneumatik.pl](http://www.arapneumatik.pl)

