

Check Valves



Check Valves SVN

Connection thread G1/4"



Suitability for Industry-Specific Applications



Check valves SVN

Design

- Flying-ball valve mounted in a space-saving manner in an aluminum body
- Blow-off function provides self-cleaning effect for use in dusty surroundings
- Molded-on nipple for various types of suction pads (size identical to that of a standard nipple)

Our Highlights...

- Special check valve with flying ball
- Integrated nipple for connection of a suction pad
- Check valve with self-cleaning effect
- Reaction dependent on the volume flow rate
- Minimum size

Your Benefits...

- > Reduction of the cross-section of the vacuum line leading to an unused suction pad; special version for porous workpieces
- > No additional nipple needed for many different types of suction pad
- > Special version for use in dusty surroundings
- > Not triggered by the normal leakage encountered when handling porous workpieces
- > Also suitable for use in restricted spaces



Designation Code Check Valves SVN

Abbreviated designation	Connection thread	Nipple family
Example SVN G1/4-AG N011:		
SVN	G1/4-AG	N011
SVN	G1/4-AG M10x1.25 (AG = male (M))	N009
	G1/4-AG	to N019



Ordering Data Check Valves SVN

Check valve SVN is delivered as a ready to connect product.



Check Valves



Check Valves SVN

Connection thread G1/4"

Check Valves SVN

Type	Part Number
SVN G1/4-AG N011	10.05.03.00068
SVN G1/4-AG N012	10.05.03.00074
SVN G1/4-AG N013	10.05.03.00066
SVN G1/4-AG N014	10.05.03.00070
SVN G1/4-AG N015	10.05.03.00072
SVN G1/4-AG N018	10.05.03.00054
SVN G1/4-AG N019	10.05.03.00056
SVN G1/4-AG M10x1.25-AG N009	10.05.03.00060



Technical Data Check Valves SVN

Type	Required evacuation rate for pu = -0,3 bar [m³/h]	Required evacuation rate for pu = -0,3 bar [l/min]	Required evacuation rate for pu = -0,6 bar [m³/h]	Required evacuation rate for pu = -0,6 bar [l/min]	Max. flow rate [m³/h] when blowing off*	Max. flow rate [l/min] when blowing off*	Weight [g]
SVN G1/4-AG N011	2.3	38.3	3.3	55	27	450	8
SVN G1/4-AG N012	2.3	38.3	3.3	55	27	450	15
SVN G1/4-AG N013	2.3	38.3	3.3	55	27	450	9
SVN G1/4-AG N014	2.3	38.3	3.3	55	27	450	12
SVN G1/4-AG N015	2.3	38.3	3.3	55	27	450	18
SVN G1/4-AG N018	2.3	38.3	3.3	55	27	450	8
SVN G1/4-AG N019	2.3	38.3	3.3	55	27	450	18
SVN G1/4-AG M10x1.25-AG N009	2.3	38.3	3.3	55	27	450	10

*Blow-off pressure 5bar

Check Valves

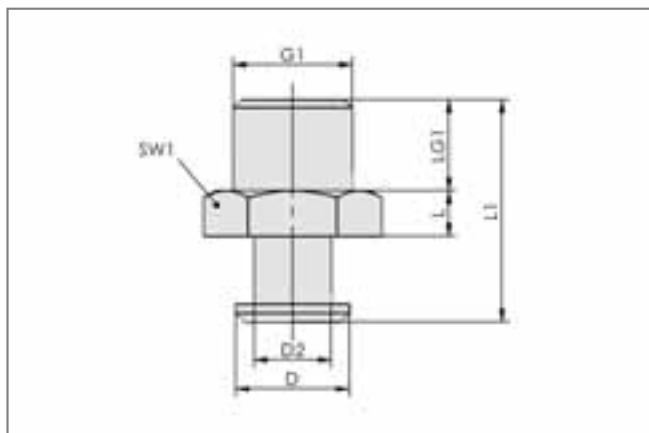


Check Valves SVN

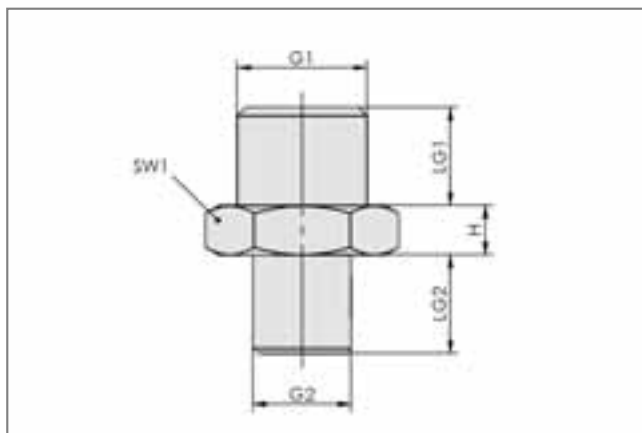
Connection thread G1/4"



Design Data Check Valves SVN



SVN G1/4-AG N011...N019

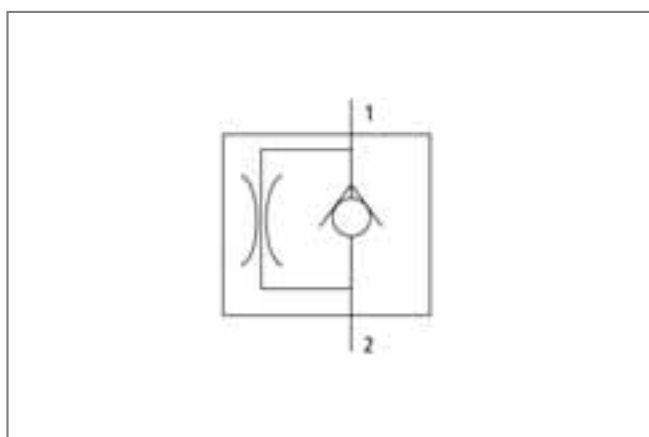


SVN G1/4-AG M10x1.25-AG N009

Type	Dimensions in mm							
	D	G1	G2	H	H1	LG1	LG2	SW1
SVN G1/4-AG N011	12.5	G1/4"-M	-	5	25	10	-	17
SVN G1/4-AG N012	18.0	G1/4"-M	-	5	30	10	-	22
SVN G1/4-AG N013	12.5	G1/4"-M	-	5	29	10	-	17
SVN G1/4-AG N014	16.5	G1/4"-M	-	5	30	10	-	17
SVN G1/4-AG N015	16.5	G1/4"-M	-	5	38	10	-	22
SVN G1/4-AG N018	14.0	G1/4"-M	-	5	29	11	-	17
SVN G1/4-AG N019	20.0	G1/4"-M	-	6	40	11	-	21
SVN G1/4-AG M10x1.25-AG N009	-	G1/4"-M	M10x1.25-M	5	10	10	10.0	17



Functional Circuit Diagram Check Valves SVN



Circuit diagram SVN (1 = vacuum generator; 2 = suction pad)

