

ISO 9001:2008 by L.R.
PED DIR. 97/23/EC by L.R.
ATEX DIR. 94/9/EC by B.V.
FIRE SAFE EXECUTION by L.R.
ISO 15848 by TÜV
ANTISTATIC DEVICE by L.R.
FIRE SAFE TESTED ISO 10497 by L.R.

WWW.ADLERSPA.COM

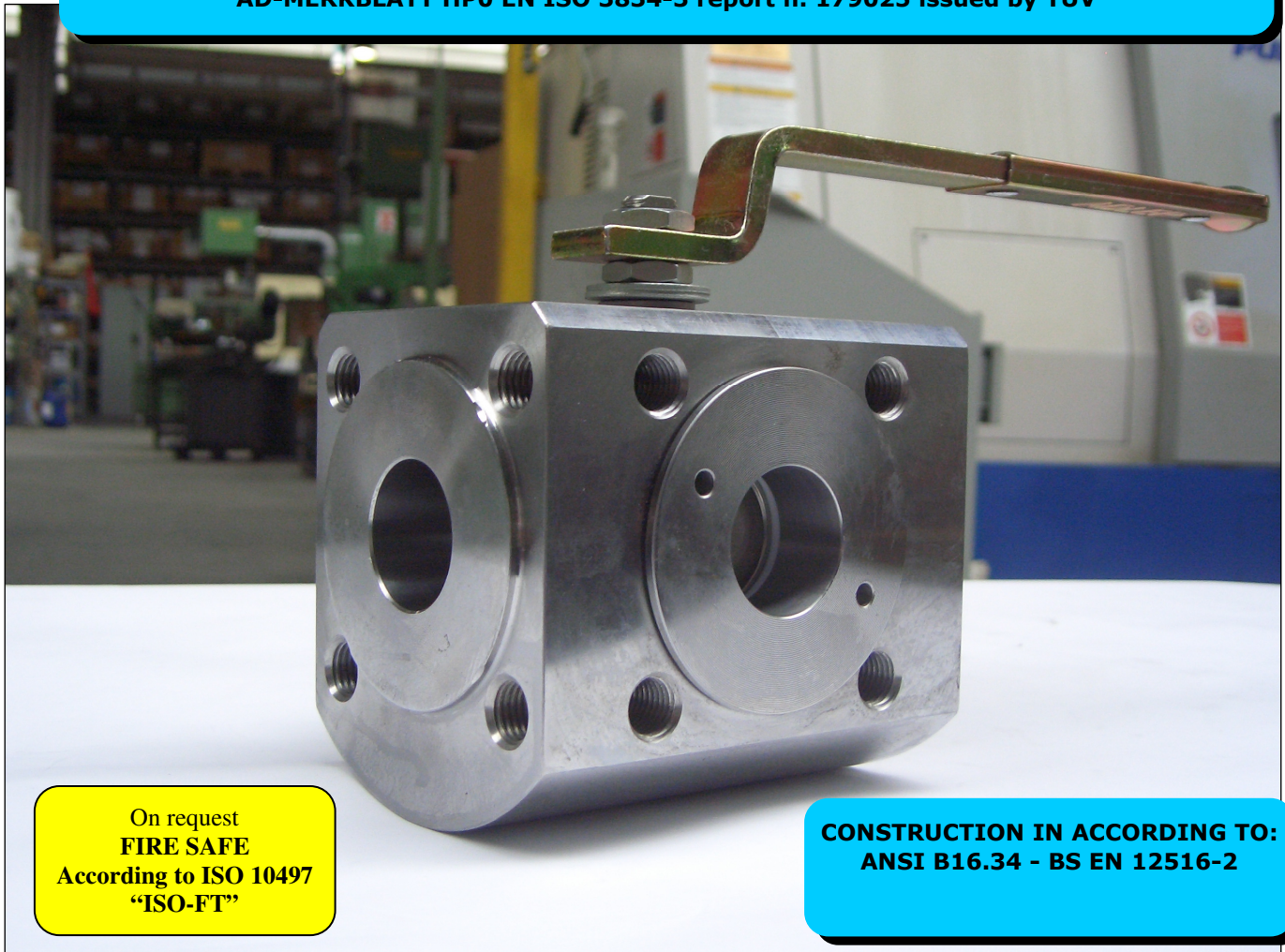
TYPE

VT5

PN 10 ÷ 40
ANSI 150 ÷ 300*

BALL VALVES "4 WAY" WITH X-BALL ROBINETS A BOULE "4 VOIES" AVEC BOULE A X KUGELHÄHNE "4 WEGE" MIT X-KUGEL

ISO nbr° LRC 0160281 QMS issued by L.R.Q.A. PED nbr° COV 0212112/01 issued by L.R.V.
ATEX nbr° 40.2003.4392 issued by B.V. ISO 15848 nbr° I-148466/1-/2 issued by TÜV
AD-MERKBLATT HP0 EN ISO 3834-3 report n. 179025 issued by TÜV



On request
FIRE SAFE
According to ISO 10497
"ISO-FT"

CONSTRUCTION IN ACCORDING TO:
ANSI B16.34 - BS EN 12516-2

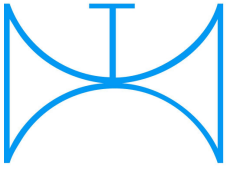
PRZEDSTAWICIEL W POLSCE:

ARA
PNEUMATIK

53-012 Wrocław tel. 71 3647285
ul. Wyścigowa 38 fax 71 3647283

www.arapneumatik.pl

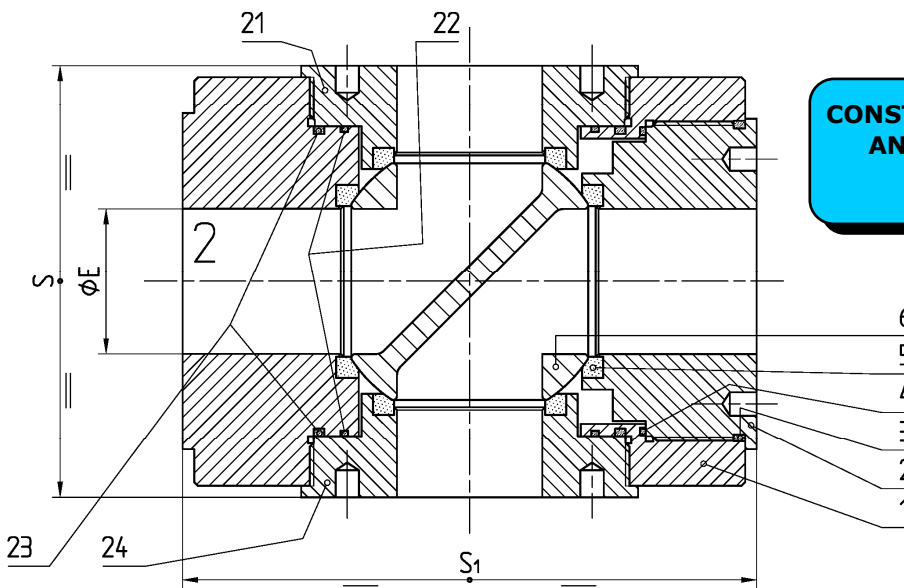
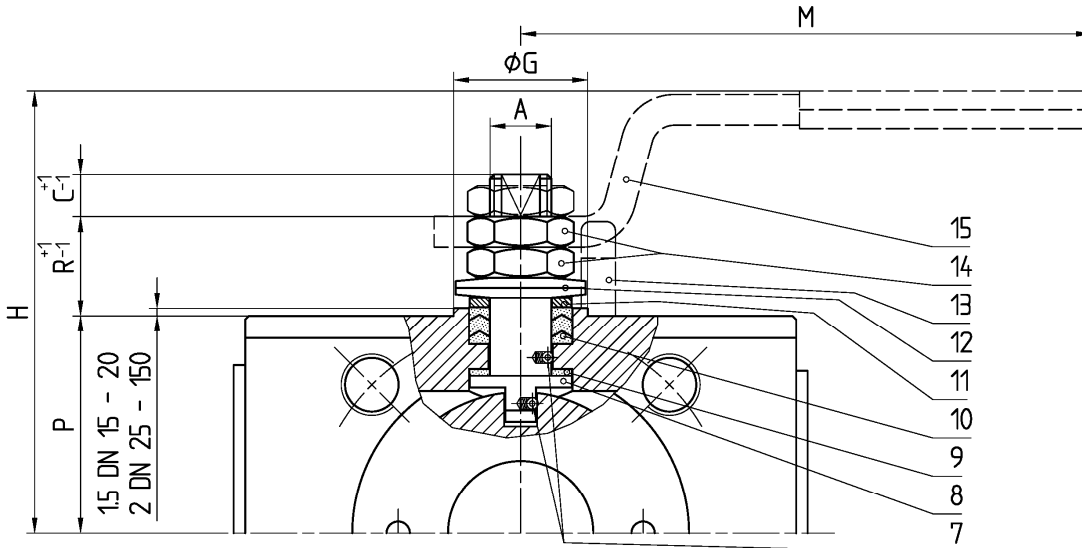




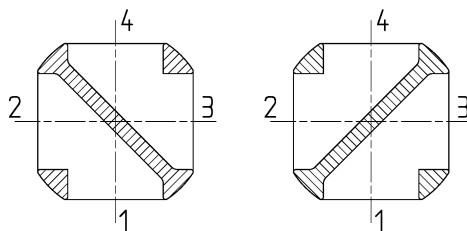
ISO 9001:2008 by L.R.
 PED DIR. 97/23/EC by L.R.
 ATEX DIR. 94/9/EC by B.V.
 FIRE SAFE EXECUTION by L.R.
 ISO 15848 by TÜV
 ANTISTATIC DEVICE by L.R.
 FIRE SAFE TESTED ISO 10497 by L.R.

TYPE
VT5
 PN 10 ÷ 40
 ANSI 150 ÷ 300*

VALVOLA A SFERA "4 VIE" CON SFERA A X
 BALL VALVES "4 WAY" WITH X-BALL
 ROBINETS A BOULE "4 VOIES" AVEC BOULE A X
 KUGELHÄHNE "4 WEGE" MIT X-KUGEL

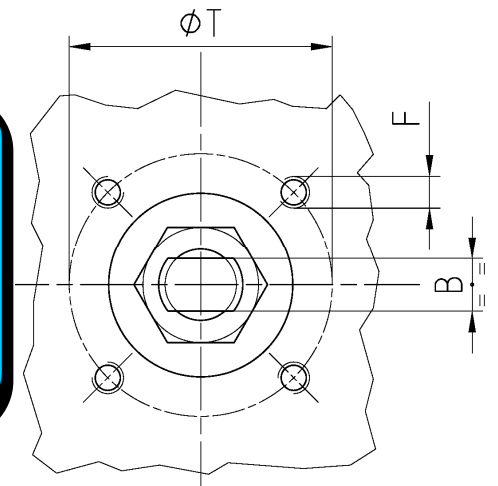


CONSTRUCTION IN ACCORDING TO:
 ANSI B16.34 - BS EN 12516-2



- ACCOPPIAMENTO VALVOLA ATTUATORE
- CONNECTION VALVE ACTUATOR
- ACCOUPLEMENT ROBINET-ACTIONNEUR
- ZUSAMMENBAU KUGELHAHN ANTRIEB

ISO-5211



POSIZIONI OTTENIBILI
 OBTAINABLE POSITIONS
 POSITIONS OBTENABLES
 MÖGLICHE STELLUNGEN

N.	DESCRIZIONE DESCRIPTION BESCHREIBUNG	MATERIALI MATERIALS MATERIAUX WERKSTOFFE
1	CORPO BODY CORPS KÖRPER	ASTM A105 ASTM A 182 F316- A479 S31600
2	GHIERA INSERT EMBOUT GEWINDED RUCKRING	ASTM A105 ASTM A 182 F316- A479 S31600
3*	O-RING	FKM (VITON)
4*	ANELLO SEAL ANNEAU DICHTUNGSRING	P.T.F.E.
5*	SEDE SEAT SIEGE SITZRING	P.T.F.E.
6	SFERA BALL BOULE KUGEL	ASTM A351 CF8 ≥ DN 40
		ASTM A351 CF8M
7	DISPOSITIVO ANTISTATICO ANTISTATIC DEVICE CONTACT ANTISTATIQUE ANTISTATIK VORRICHTUNG	ASTM A479 S31600
8	STELO STEM TIGE SPINDEL	ASTM A182 F304 A479 S30400 ≥ DN 40
		ASTM A182 F316 A479 S31600
9*	BUSSOLA STEM SEAL JOINT TIGE UNTERE SPINDEL ABDICHTUNG	P.T.F.E.
10*	PACCO A "V" CHEVRON RINGS JOINT A "V" 3 FACHE DACHMANSCHETTE	P.T.F.E. / GRAFITE P.T.F.E. / GRAPHITE P.T.F.E. / GRAPHIT P.T.F.E. / GRAPHIT

N.	DESCRIZIONE DESCRIPTION BESCHREIBUNG	MATERIALI MATERIALS MATERIAUX WERKSTOFFE
11	PREMIBUSSOLA PRESSING BUSH PRESSE RONDELLE STOPFBUCHSDRUCKRING	ASTM A479 S31600
12	MOLLE A TAZZA SPRING WASHERS RONDELLES BELLEVILLE TELLERFEDERN	C72/50Cr V ₄ ZINCATO - GALVANIZED ZINGUE - VERZINKT
13	VITE DI FERMO E FERMO PIN AND STOP PIN PLOT ET PLOT D'ARRET ANSCHLAGBOLZEN	UNI 3740 - 8.8 ZINCATO - GALVANIZED ZINGUE - VERZINKT
14	DADO - CONTRODADO NUT - LOCK NUT ECROU - CONTRE-ECROU MUTTER - KONTERMUTTER	UNI 3740 - 6S ZINCATO - GALVANIZED ZINGUE - VERZINKT
15	LEVA WRENCH LEVIER HANDHEBEL	UNI 5946 Fe 37 ZINCATO - GALVANIZED ZINGUE - VERZINKT
21	GHIERA INSERT EMBOUT GEWINDED RUCKRING	ASTM A105 ASTM A 182 F316- A479 S31600
22*	ANELLO SEAL ANNEAU DICHTUNGSRING	P.T.F.E.
23*	O-RING	FKM (VITON)
24	GHIERA INSERT EMBOUT GEWINDED RUCKRING	ASTM A105 ASTM A 182 F316- A479 S31600

* RICAMBI CONSIGLIATI - RECOMMENDED SPARE PARTS - PIECES DE RECHANGE CONSEILLEES - ERSATZTEIL EMPFEHLUNG

DIMENSIONI - DIMENSION - DIMENSIONS - ABMESSUNGEN

DN	10	15	20	25	32	40	50	65	65	80	100	100	125	150	200
A		10	10	12	12	16	16	22	22	22	30	30			
B		6	6	8	8	10	10	14	14	14	18	18			
C		7	7	10	10	15	15	17	17	17	17	17			
ØE		15	19	25	30	38	51	64	64	69	87	87			
F		M5	M5	M5	M5	M6	M6	M8	M8	M8	M10	M10			
ISO		F03	F03	F03	F03	F05	F05	F07	F07	F07	F10	F10			
G		25	25	25	25	35	35	55	55	55	70	70			
H		70	75	90	95	112	122	147	147	149	174	174			
M		145	145	185	185	280	280	370	370	370	470	470			
P		36,6	41	46	51	57	67	85	85	87	99,5	107			
R		8	8	17	17	20	20	23	23	23	26	18			
S		64	80	83	105	113	124	140	162	174	192	210			
S ₁		97	108	115	140	150	165	185	206	216	230	262			
T		36	36	36	36	50	50	70	70	70	102	102			
~Kg	CARBON STEEL STAINLESS STEEL	4	6,5	7,5	12	15,5	18	25,5	35	54	69	90			
~Kg	STAINLESS STEEL	3,5	5,8	6,5	11	14	16	24							

- DATI E CARATTERISTICHE SOGGETTI A VARIAZIONI SENZA PREAVVISO
 - SPECIFICATIONS SUBJECT TO MODIFICATION WITHOUT PRIOR NOTICE
 - TOUS DROITS DE MODIFICATION RESERVES
 - KONSTRUKTIONSÄNDERUNGEN VORBEHALTEN
- ★ ANSI 300 ON REQUEST

PN 10 ÷ 16 - ANSI 150

PN 25 ÷ 40

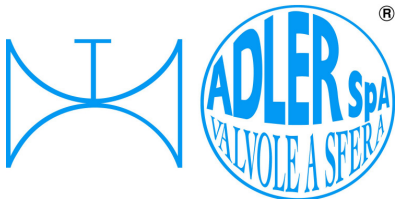
DN 100 ANSI 150 S=100,5 S₁=240

EXECUTION 17

EXECUTION 18



ADLER SpA - VALVOLE A SFERA
20010 S. STEFANO TICINO (MI) ITALY V.le BORLETTI, 14 Tel. +39/02974842.11 FAX +39/0297271698
E-mail: adler@adlerspa.com <http://www.adlerspa.com>



ISO 9001:2008 by L.R.
 PED DIR. 97/23/EC by L.R.
 ATEX DIR. 94/9/EC by B.V.
 FIRE SAFE EXECUTION by L.R.
 ISO 15848 by TÜV
 ANTISTATIC DEVICE by L.R.
 FIRE SAFE TESTED ISO 10497 by L.R.

TYPE
VT5
 PN 10 ÷ 40
 ANSI 150 ÷ 300*

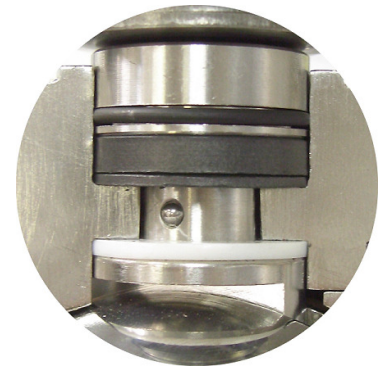
VALVOLE A SFERA "4 VIE" CON SFERA A X
 BALL VALVES "4 WAY WAFER" WITH X BALL

ROBINETS A BOULE "4 VOIES" AVEC BOULE A X
 KUGELHÄHNE "4 WEGE" MIT X KUGEL

▪ ESECUZIONI ▪ EXECUTIONS ▪ EXECUTIONS ▪ AUSFÜHRUNGEN



EXECUTION 4-12



EXECUTION 6 - 16

S STANDARD

O OPTIONAL

1 **S**

-MONTAGGIO VITI - SCREW ASSEMBLING
 -MONTAGE VIS - EINBAU MIT SCHRAUBEN

2 **S**

INDICATORE DI FLUSSO
 FLOW INDICATOR

SEE OBTAINABLE POSITIONS
 ON DATASHEET

2 **S**

INDICATORE DI FLUSSO
 FLOW INDICATOR
 Linked Way

SEE OBTAINABLE POSITIONS
 ON DATASHEET

4 **S**

-STELO ANTI ESPULSIONE -ANTI BLOW OUT STEM
 -TIGE ANTIEXPULSION -AUSBLASGESICHERTE WELLE

-PACCO A "V" -CHEVRON RINGS
 -JOINT A "V" -3 FACHE DACHMANSCHETE
 ANTISTATIC DEVICE ANTISTATIK VORRICHTUNG
 BS 5146

AQUILA - AEGLE - AIGLE
 ADLER

6 **O**

BREVETTO - PATENTED
 00219688

FKM (VITON)
 -"O" RING STELO "O" RING ON STEM
 -TIGE AVEC "O" RING
 -"O" RING IM SPINDELBEREICH

VT5/08 RIPRODUZIONE VIETATA - COPYRIGHT



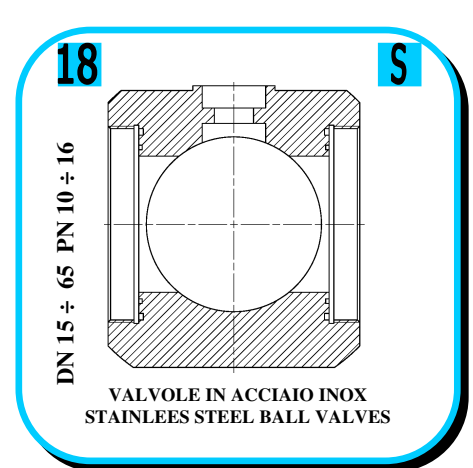
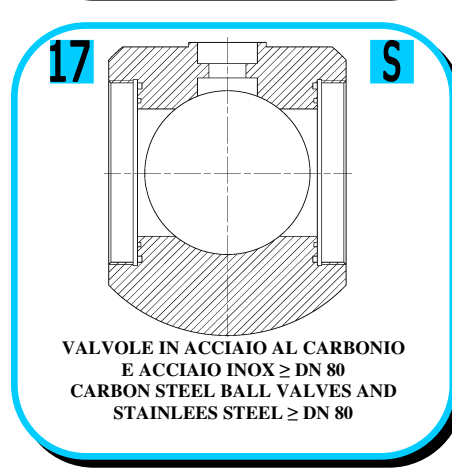
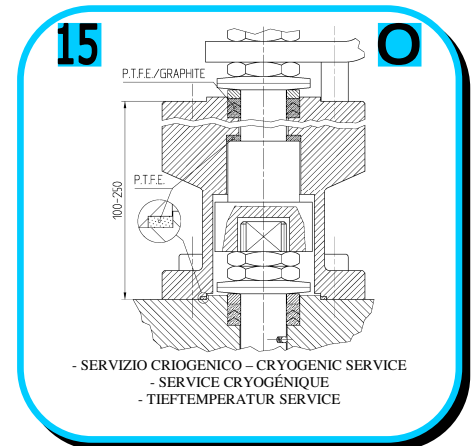
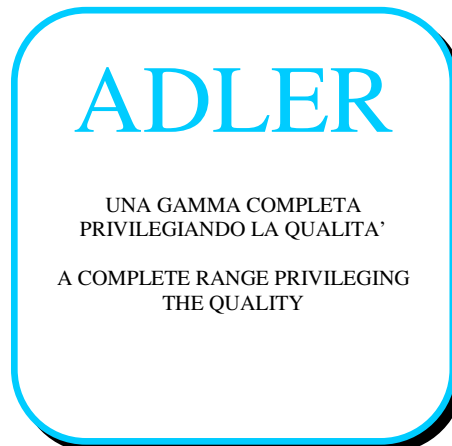
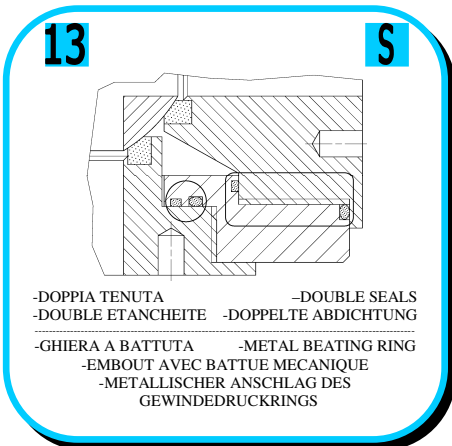
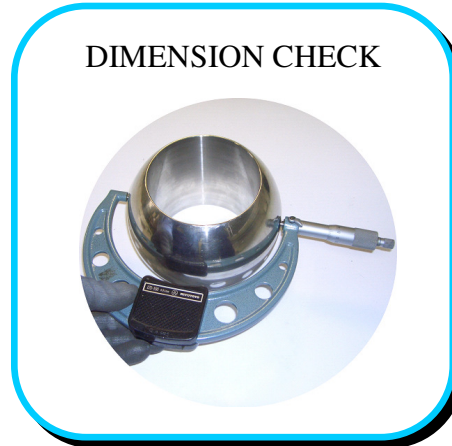
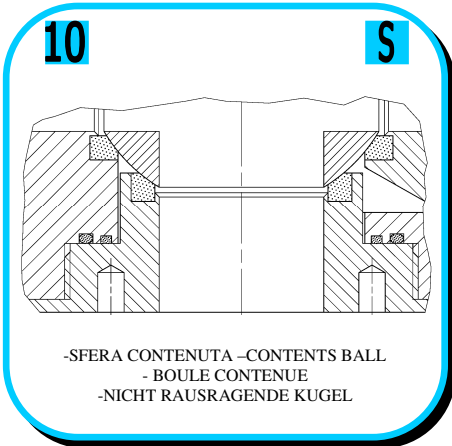
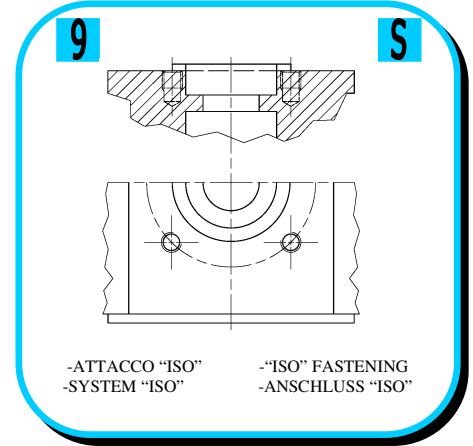
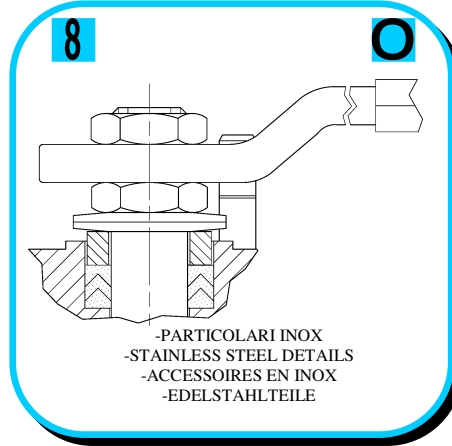
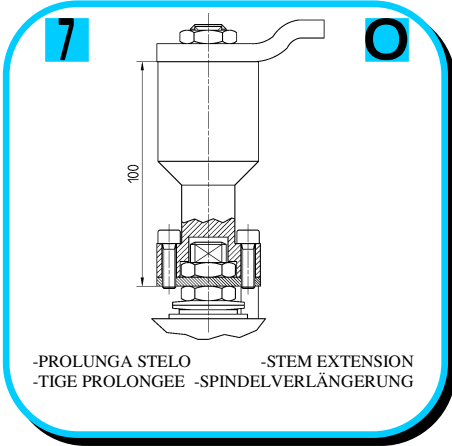
ISO 9001:2008 by L.R.
 PED DIR. 97/23/EC by L.R.
 ATEX DIR. 94/9/EC by B.V.
 FIRE SAFE EXECUTION by L.R.
 ISO 15848 by TÜV
 ANTISTATIC DEVICE by L.R.
 FIRE SAFE TESTED ISO 10497 by L.R.

TYPE
VT5
 PN 10 ÷ 40
 ANSI 150 ÷ 300*

VALVOLE A SFERA "4 VIE" CON SFERA A X
 BALL VALVES "4 WAY WAFER" WITH X BALL

ROBINETS A BOULE "4 VOIES" AVEC BOULE A X
 KUGELHÄHNE "4 WEGE" MIT X KUGEL

• ESECUZIONI • EXECUTIONS • EXECUTIONS • BESCHREIBUNG





**VITI D'ASSEMBLAGGIO PER VT5
ASSEMBLING SCREWS FOR VT5
VIS D'ASSEMBLAGE POUR VT5
MONTAGESCHRAUBEN FÜR VT5**

**TABLE
08**

N° VITI – DIMENSIONE • N° SCREW – DIMENSIONS • N° VIS- DIMENSIONS • N° SCHRAUBEN – ABMESSUNGEN

EUROPEAN NORM

DN PN	15	20	25	32	40	50	65	80	100	125	150	200	250
10	16 M12 X30	16 M12 X30	16 M12 X30	16 M16 X35	16 M16 X35	16 M16 X40	16 M16 X40	32 M16 X40	32 M16 X40				
16	16 M12 X30	16 M12 X30	16 M12 X30	16 M16 X35	16 M16 X35	16 M16 X40	16 M16 X40	32 M16 X40	32 M16 X40				
25	16 M12 X30	16 M12 X35	16 M12 X35	16 M16 X40	16 M16 X40	16 M16 X40	32 M16 X45	32 M16 X45	32 M20 X50				
40	16 M12 X30	16 M12 X35	16 M12 X35	16 M16 X40	16 M16 X40	16 M16 X40	32 M16 X45	32 M16 X45	32 M20 X50				

* N° 8 per UNI 2223/2229

ANSI METRIC

(STANDARD ADLER)

Ø Rating	1/2"	3/4"	1"	1 1/4"	1 1/2"	2"	2 1/2"	3"	4"	5"	6"	8"
150	16 M14 X30	16 M14 X30	16 M14 X30	16 M14 X45	16 M14 X35	16 M16 X40	16 M16 X40	16 M16 X45	32 M16 X45			
300	16 M14 X30	16 M16 X30	16 3/16 X35	16 M16 X40	16 M20 X45	16 M16 X40	32 M20 X50	32 M20 X50	32 M20 X55			

ANSI B1.1 UNC

(ON REQUEST)

Ø Rating	1/2"	3/4"	1"	1 1/4"	1 1/2"	2"	2 1/2"	3"	4"	5"	6"	8"
150	16 1/2 X 1 1/4	16 1/2 X 1 1/4	16 1/2 X 1 1/4	16 1/2 X 1 1/4	16 1/2 X 1 1/2	16 5/8 X 1 1/2	16 5/8 X 1 3/4	16 5/8 X 1 3/4	32 5/8 X 1 3/4			
300	16 1/2 X 1 1/4	16 5/8 X 1 1/4	16 5/8 X 1 1/2	16 5/8 X 1 1/2	16 3/4 X 1 3/4	16 5/8 X 1 3/4	32 3/4 X 2	32 3/4 X 2	32 3/4 X 2 1/4			



PRZEDSTAWICIEL W POLSCE:

ARA
PNEUMATIK

53-012 Wrocław tel. 71 3647285
ul. Wyścigowa 38 fax 71 3647283

www.arapneumatik.pl



ADLER SpA – VALVOLE A SFERA
20010 S. STEFANO TICINO (MI) ITALY V.le BORLETTI, 14 Tel. +39/02974842.11 FAX +39/0297271698
E-mail: adler@adlerspa.com <http://www.adlerspa.com>