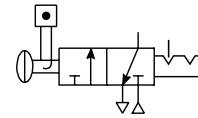


**Ball Valve / Lockout Valve**

**Symbol**



**Features**

The Ball / Lockout Valve shuts off downstream line pressure in the closed position with a 90° turn of the handle. In the closed position, inlet air pressure is blocked and downstream / system air is exhausted through a threaded port. To prevent unauthorized adjustment, the padlock slide may be assembled on either side. It is recommended that this slide is installed after final system assembly.

**Note:** This padlock slide is a permanent assembly and may not be removed later, any unauthorized tampering will void any warranty claims. The valve can only be locked in the closed position.

**Ordering Information**

Model type	Port size	Exhaust port	Thread type	Flow dm <sup>3</sup> /s (scfm)	Modular ball valve flow from left to right
<b>P31</b>	1/4"	1/4"	BSPP	20 (42.4)	<b>P31VB12LBNN</b>
<b>P32</b>	3/8"	1/4"	BSPP	90 (190.7)	<b>P32VB13LBNN</b>
	1/2"	1/4"	BSPP	122 (258.5)	<b>P32VB14LBNN</b>
<b>P33</b>	1/2"	1/2"	BSPP	265 (561.5)	<b>P33VB14LBNN</b>
	3/4"	1/2"	BSPP	320 (678)	<b>P33VB16LBNN</b>

For thread type: NPT **9**

**Specifications**

Operating temperature	-40°C to 80°C (-40°F to 176°F)	
Max. supply pressure	17 bar (250 psig)	
Port size	BSPP / NPT	1/4, 3/8, 1/2, 3/4
Weight	<b>P31:</b>	0.15 kg (0.33 lbs)
	<b>P32:</b>	0.36 kg (0.79 lbs)
	<b>P33:</b>	0.55 kg (1.21 lbs)

**Material Specifications**

Body	Aluminum	
Seals	PTFE	
Ball	<b>P31</b>	Stainless Steel
	<b>P32 / P33</b>	Stainless Steel

**Dimensions mm (inches)**

