

Self-Fastening Barb Connectors for NBR Hose

This range of fittings is designed to meet the requirements of the automotive and robotics industries, combining as it does **optimum CNOMO manufacturing quality**, simple installation, reliable operation and a **long service life**.

Product Advantages

Perfect for Self-Fastening NBR Hose

- Quick and simple to install
- Compatible with the Parker Legris range of brass compression fittings
- Mechanical properties proven for use in industrial robotic installations
- Spark-resistant

Ergonomic and Time-Saving

- Fitting does not require lubrication or clamping, reducing assembly time
- Visual stop confirms installation is correct and improves operating safety
- Removal by cutting the tube
- The fitting can be re-used if necessary



Applications

- Welding Robots
- Pneumatics
- Compressed Air Systems
- Automotive Process
- Cooling

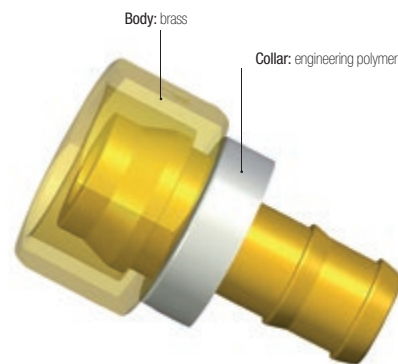
Technical Characteristics

| | | | | | | |
|----------------------------|---|--|--|--|--|--|
| Compatible Fluids | Coolants, compressed air | | | | | |
| Working Pressure | 0 to 16 bar | | | | | |
| Working Temperature | 0°C to +100°C (water) -20°C to +70°C (air) | | | | | |

| | | | | | | | |
|-------------------------------------|-------|-----|-----|-----|-----|----|----|
| Tightening Torque, Type 0132 | DN | 6 | 8 | 10 | 14 | 18 | 22 |
| | daN.m | 0.7 | 1.5 | 1.8 | 3.5 | 6 | 7 |

Reliable performance is dependent upon the type of fluid conveyed and hose being used.

Component Materials



Silicone-free

Self-Fastening Hose Assembly Machine

Machine designed to assemble a barb connector and a self-fastening NBR hose.

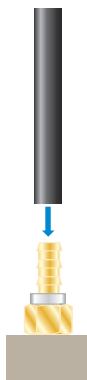
Machine part number: **0650 00 00 05**



Tube Cutting and Positioning

Cut the hose square and position the barb connector on the mounting tool.

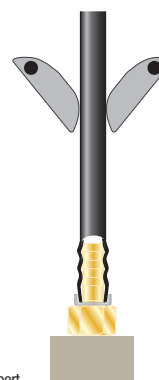
Barb Connector Support



Press-Fitting the Tube

Activate the press-fit tool; connection is complete when the tube is fully home on the barb connector. This tool has been designed for use with 5 different diameters and is easy to operate.

Barb Connector Support



Regulations

Industrial
 DI: 2002/95/EC (RoHS), 2011/65/EC
 DI: 97/23/EC (PED)
 RG: 1907/2006 (REACH)
 CNOMO: E07.21.115N

ARA[®]
PNEUMATIK

53-012 Wrocław tel. 71 364 72 82
 ul. Wyscigowa 38 fax 71 364 72 83

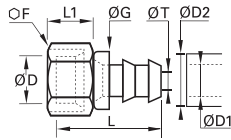
www.arapneumatik.pl



Self-Fastening Barb Connectors for NBR Hose

0132 Self-Fastening Barb Connector for Brass Compression Fitting

Brass

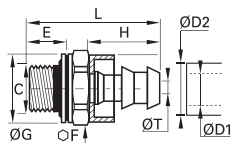


| ØD | ØD1 | ØD2 | | F | G | L | L1 | ØT | Kg |
|----|------|-----|----------------------------|----|------|------|------|------|-------|
| 6 | 6.3 | 13 | 0132 06 56 | 12 | 16.5 | 32.5 | 12.5 | 4.8 | 0.010 |
| 8 | 6.3 | 13 | 0132 08 56 | 14 | 16.5 | 29.5 | 11.5 | 4.8 | 0.015 |
| 10 | 6.3 | 13 | 0132 10 56 | 19 | 16.5 | 30 | 14 | 4.8 | 0.028 |
| | 9.5 | 16 | 0132 10 60 | 19 | 19.5 | 34 | 14 | 7.5 | 0.030 |
| 14 | 9.5 | 16 | 0132 14 60 | 24 | 19.5 | 35.5 | 15 | 7.5 | 0.050 |
| | 12.7 | 19 | 0132 14 62 | 24 | 23.5 | 39.5 | 15 | 10 | 0.054 |
| 18 | 12.7 | 19 | 0132 18 62 | 30 | 23.5 | 41.5 | 17 | 10 | 0.090 |
| | 15.9 | 23 | 0132 18 66 | 30 | 27 | 50 | 17 | 13.5 | 0.090 |
| 22 | 19.1 | 27 | 0132 22 69 | 36 | 30.5 | 56.5 | 17 | 16 | 0.128 |

Polymer collar

0133..39 Self-Fastening Bar Connector with Bi-Material Seal, Male BSPP Thread

Brass, zinc-plated steel with NBR seal

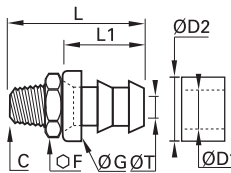


| ØD1 | ØD2 | C | | E | F | G | H | L | ØT | Kg |
|------|-----|------|-------------------------------|------|----|----|------|------|------|-------|
| 6.3 | 13 | G1/8 | 0133 56 10 39 | 5.5 | 13 | 14 | 20 | 31.5 | 4.8 | 0.012 |
| | | G1/4 | 0133 56 13 39 | 7 | 17 | 17 | 20 | 33.5 | 4.8 | 0.018 |
| 9.5 | 16 | G1/4 | 0133 60 13 39 | 7 | 17 | 17 | 24 | 37.5 | 7.5 | 0.021 |
| | | G3/8 | 0133 60 17 39 | 9.5 | 22 | 22 | 24 | 42.5 | 7.5 | 0.038 |
| 12.7 | 19 | G3/8 | 0133 62 17 39 | 9.5 | 22 | 22 | 28 | 46.5 | 10 | 0.044 |
| | | G1/2 | 0133 62 21 39 | 10.5 | 27 | 26 | 28 | 48.5 | 10 | 0.060 |
| 15.9 | 23 | G1/2 | 0133 66 21 39 | 10.5 | 27 | 26 | 36.5 | 57 | 13.5 | 0.063 |
| | | G3/4 | 0133 66 27 39 | 11.5 | 32 | 32 | 36.5 | 59 | 13.5 | 0.096 |
| 19.1 | 27 | G3/4 | 0133 69 27 39 | 11.5 | 32 | 32 | 43 | 65.5 | 16 | 0.111 |

Thread with bi-material seal and polymer collar
Bi-material sealing washers part number 0139 can be found in chapter 9.

0134 Self-Fastening Barb Connector, Male BSPT Thread

Brass



| ØD1 | ØD2 | C | | F | G | L | L1 | ØT | Kg |
|------|-----|------|----------------------------|----|------|------|------|------|-------|
| 6.3 | 13 | R1/8 | 0134 56 10 | 14 | 16.5 | 32.5 | 20 | 4.8 | 0.015 |
| | | R1/4 | 0134 56 13 | 14 | 16.5 | 37 | 20 | 4.8 | 0.020 |
| 9.5 | 16 | R1/4 | 0134 60 13 | 14 | 19.5 | 41 | 24 | 7.5 | 0.022 |
| | | R3/8 | 0134 60 17 | 19 | 19.5 | 41.5 | 24 | 7.5 | 0.036 |
| 12.7 | 19 | R3/8 | 0134 62 17 | 19 | 23.5 | 45.5 | 28 | 10 | 0.038 |
| | | R1/2 | 0134 62 21 | 22 | 23.5 | 50 | 28 | 10 | 0.062 |
| 15.9 | 23 | R1/2 | 0134 66 21 | 22 | 27 | 58.5 | 36.5 | 13.5 | 0.056 |
| | | R3/4 | 0134 66 27 | 27 | 27 | 60.5 | 36.5 | 13.5 | 0.101 |
| 19.1 | 27 | R3/4 | 0134 69 27 | 27 | 30.5 | 67 | 43 | 16 | 0.108 |

Polymer collar

Self-fastening NBR hose is selected by nominal diameter; for example:

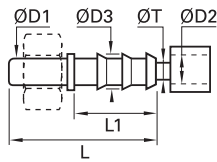
| Barb Connector | O.D. (Tube) | Ø DN (Tube) | Self-Fastening NBR hose |
|-------------------|-------------|-------------|-------------------------|
| 0132 10 56 | 10 | 1/4 | 10..H 56... |



Brass Adaptors

0122 Barb Connector for Hose

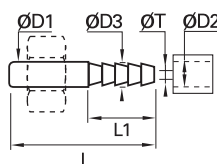
Brass



| ØD1 | ØD2 | | ØD3 | L | L1 | ØT min | Kg |
|-----|-----|----------------------------|------|------|------|-----------|-------|
| 4 | 4 | 0122 04 04 | 6 | 37.5 | 22.5 | 3 | 0.004 |
| 5 | 4 | 0122 05 04 | 6 | 37.5 | 22.5 | 3 | 0.003 |
| 6 | 4 | 0122 06 04 | 6 | 37.5 | 22.5 | 3 | 0.005 |
| | 7 | 0122 06 07 | 9 | 37.5 | 22.5 | 6 | 0.007 |
| 8 | 6 | 0122 08 06 | 8 | 40 | 22.5 | 5 | 0.007 |
| | 7 | 0122 08 07 | 9 | 40 | 22.5 | 6 | 0.008 |
| | 10 | 0122 08 10 | 12.5 | 40 | 22.5 | 9 | 0.012 |
| 10 | 7 | 0122 10 07 | 9 | 43 | 22.5 | 6 | 0.010 |
| | 10 | 0122 10 10 | 12.5 | 43 | 22.5 | 9 | 0.014 |
| 12 | 10 | 0122 12 10 | 12.5 | 43 | 22.5 | 9 | 0.013 |
| | 13 | 0122 12 13 | 15 | 50 | 29.5 | 12 | 0.018 |
| 14 | 13 | 0122 14 13 | 15 | 52 | 29.5 | 12 | 0.019 |
| | 16 | 0122 14 16 | 18.5 | 60.5 | 38 | 15 | 0.031 |
| 15 | 13 | 0122 15 13 | 15 | 52 | 29.5 | 12 | 0.020 |
| | 16 | 0122 15 16 | 18.5 | 60.5 | 38 | 15 | 0.032 |
| 16 | 13 | 0122 16 13 | 15 | 53.5 | 29.5 | 12 | 0.021 |
| | 16 | 0122 16 16 | 18.5 | 62 | 38 | 15 | 0.032 |
| 18 | 16 | 0122 18 16 | 18.5 | 62 | 38 | 15 | 0.032 |
| | 19 | 0122 18 19 | 21.5 | 62 | 38 | 18 | 0.040 |
| 20 | 16 | 0122 20 16 | 18.5 | 64 | 38 | 15 | 0.034 |
| | 19 | 0122 20 19 | 21.5 | 64 | 38 | 18 | 0.039 |
| 22 | 19 | 0122 22 19 | 21.5 | 64 | 38 | 18 | 0.041 |
| 25 | 19 | 0122 25 19 | 21.5 | 70 | 38 | 18 | 0.048 |
| | 25 | 0122 25 25 | 27.5 | 70 | 38 | 24 | 0.054 |
| 28 | 25 | 0122 28 25 | 27.5 | 70 | 38 | 24 | 0.087 |

0165 Barb Connector for Flexible Tubing

Brass



| ØD1 | ØD2 | | ØD3 | L | L1 | ØT min | Kg |
|-----|-----|----------------------------|------|------|----|-----------|-------|
| 4 | 4 | 0165 04 06 | 4.3 | 30 | 15 | 2 | 0.002 |
| 5 | 4 | 0165 05 06 | 4.3 | 30 | 15 | 2 | 0.003 |
| 6 | 4 | 0165 06 06 | 4.3 | 30 | 15 | 2 | 0.003 |
| | 6 | 0165 06 08 | 6.4 | 30 | 15 | 4 | 0.004 |
| 8 | 6 | 0165 06 10 | 8.4 | 30 | 15 | 4 | 0.004 |
| | 6 | 0165 08 08 | 6.4 | 32.5 | 15 | 4 | 0.005 |
| 8 | 8 | 0165 08 10 | 8.4 | 32.5 | 15 | 6 | 0.006 |
| | 10 | 0165 08 12 | 10.7 | 37.5 | 20 | 8 | 0.009 |
| | 8 | 0165 10 10 | 8.4 | 35.5 | 15 | 6 | 0.008 |
| 10 | 10 | 0165 10 12 | 10.7 | 40.5 | 20 | 8 | 0.010 |
| | 12 | 0165 10 14 | 12.7 | 40.5 | 20 | 8 | 0.012 |
| 12 | 10 | 0165 12 12 | 10.7 | 40.5 | 20 | 8 | 0.011 |
| | 12 | 0165 12 14 | 12.7 | 40.5 | 20 | 10 | 0.012 |
| 14 | 12 | 0165 14 14 | 12.7 | 42.5 | 20 | 10 | 0.015 |
| 15 | 13 | 0165 15 16 | 13.7 | 42.5 | 20 | 11 | 0.015 |
| 16 | 13 | 0165 16 16 | 13.7 | 44 | 20 | 11 | 0.018 |

Assembly: Barb Connectors

Our barb connectors 0122 and 0165 are designed to be used with different types of hose. They are secured using the nut and olive provided with the fitting.

